

Converting Colors

Hex(9B7154)

Have a look what the booklet for
Hex(9B7154) contains.

| | |
|--|----|
| Hex(9B7154) | 3 |
| <i>Conversions</i> | 4 |
| <i>Details</i> | 6 |
| <i>Harmonies</i> | 11 |
| <i>Previews</i> | 23 |
| <i>Color Blindness Simulation</i> | 26 |
| <i>CSS Examples</i> | 29 |

Color

Hex(9B7154)

Conversions

Conversions Part 1

| Format | Color |
|---------------|----------------------------|
| Hex | 9B7154 |
| RGB | 155, 113, 84 |
| RGB Percent | 61%, 44%, 33% |
| CMY | 0.3922, 0.5569, 0.6706 |
| CMYK | 0.00, 0.27, 0.46, 0.39 |
| HSL | 25°, 30%, 47% |
| HSV | 25°, 46%, 61% |
| XYZ | 21.0229, 19.4189, 11.0277 |
| YIQ | 122.2520, 34.3410, -0.1150 |

Conversions

Conversions Part 2

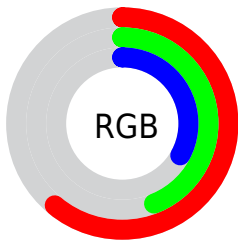
| Format | Color |
|-------------------------------------|---|
| RYB | 155, 133, 84 |
| Decimal | 10187092 |
| CIELab | 51.17, 12.84, 22.59 |
| CIELCh | 51, 25.984, 60.388 |
| Yxy | 19.4189, 0.4085, 0.3773 |
| Android (android.graphics.Color) | 4288377172 (0xFF9B7154) |
| YUV | 122.2520, -18.8582, 28.7200 |
| Hunter-Lab | 44.0669, 8.0397, 16.0096 |

Details

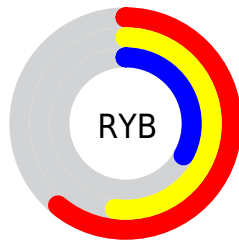
The Hex color **9B7154** is a dark color, and the websafe version is hex **996633**. A complement of this color would be **547E9B**, and the grayscale version is **7A7A7A**.

A 20% lighter version of the original color is **D3A586**, and **664126** is the 20% darker color. If you saturate the color by 10%, you get **9B6845**, and if you desaturate by 10%, it is **9B7A64**.

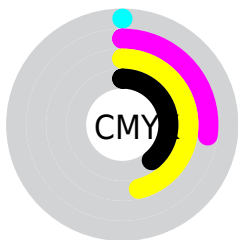
Distribution



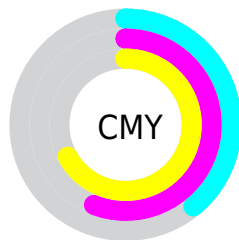
- Red (61%)
- Green (44%)
- Blue (33%)



- Red (61%)
- Yellow (52%)
- Blue (33%)



- Cyan (0%)
- Magenta (27%)
- Yellow (46%)
- Black (39%)



- Cyan (39%)
- Magenta (56%)
- Yellow (67%)

Brightness & Saturation Gradients

These gradients show how the Hex color 9B7154 changes by changing the brightness by 10 percent. The first figure shows a shift by +10% for each color and the second figure -10%.

Similar to the brightness gradients but the following saturation gradients show a change of the Hex color 9B7154 by changing the saturation by 10% instead.

 9B7154

 9B7154

FFFFFF

 80583D

 D3A586

 664126

 F0C0A0

 4C2B11

 FFDCBB

 341600

 FFF8D7

 1D0000

 FFFFF3

 000000

 9B7154

 9B7154

 9B6845

 9B7A64

 9B5F35

 9B8373

 9B5526

 9B8D83

 9B4C16

 9B9692

 9B4307

 9B9FA2

 9B3F00

 9BA8B1

 9BB1C1

 9BBAD0

 9BC4DF

Harmonies

Analogous

The Analogous color harmony consists of three colors that are next to each other on the color wheel.



A56B65



9B7154



89794D

Triad

The Triadic color harmony groups three colors that are evenly spaced from another and form a triangle on the color wheel.



9B7154



3D8679



7D74A0

Complementary

The Complementary color scheme is a pair of colors which are on the opposite of each other on the color wheel.



9B7154



547E9B

Split Complementary

Split-complementary colors differ from the complementary color scheme. The scheme consists of three colors, the original color and two neighbors of the complement color.



5C7CA6



9B7154



2C8590

Square

The Square scheme is like the rectangle color scheme, but the four colors are evenly spaced on the color wheel.



9B7154



578463



3B82A0



966D90

Rectangle

The Rectangle color scheme consists of four colors that form a rectangle on the color wheel.



9B7154



7A7D50



3B82A0



7377A3

Sweetspot

The Sweet Spot groups the original color and five complimentary colors.



9B7154



C9B9AD



9B547F



665C55



E6E6E6



666666

Same Dimension

The Same Dimension uses a secret algorithm to generate beautiful new colors.



9B7154



C9885B



9B9454



4D4845



8C3900



0D0500

Inverse Universe

The Inverse Universe completely reimagines the original color for something new.



547E9B



5B9CC9



545B9B



45494D



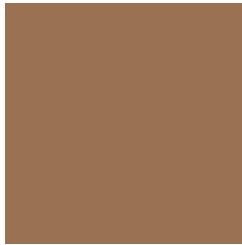
00538C



00080D

Previews

White Background



This preview shows how the Hex color 9B7154 looks on a white background.

Color Contrast Check

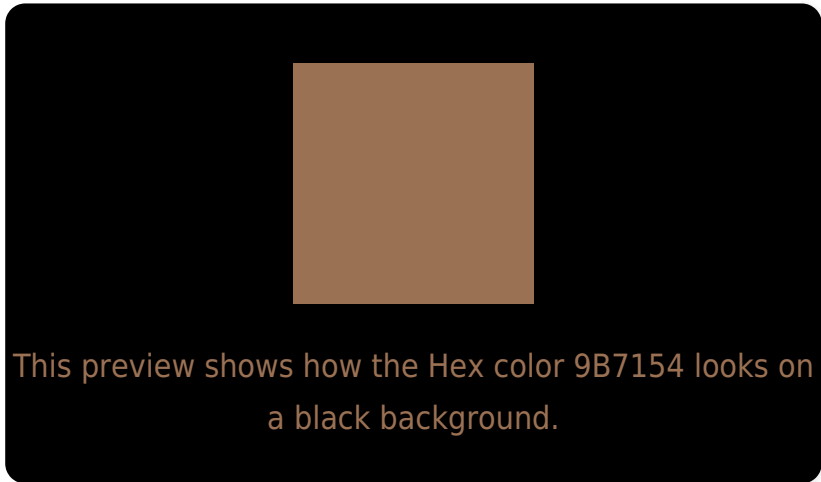
Large Text (above 18pt) WCAG AA ✓ Pass

Any Text WCAG AA × Fail

Large Text (above 18pt) WCAG AAA × Fail

Any Text WCAG AAA × Fail

Black Background



Color Contrast Check

Large Text (above 18pt) WCAG AA ✓ Pass

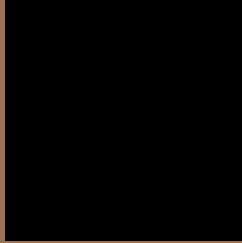
Any Text WCAG AA ✓ Pass

Large Text (above 18pt) WCAG AAA ✓ Pass

Any Text WCAG AAA × Fail

If you want to check with other color combinations, try the [Color Contrast Checker](#).

Hex 9B7154 Background



This preview shows how black text looks on a background with the Hex color 9B7154.



This preview shows how white text looks on a background with the Hex color 9B7154.

Color Blindness Simulation

Color vision deficiency is a very complex topic, and I could not describe the different causes any better than Wikipedia does, so if you want to learn more, you should check out their [article about color blindness](#).


Dichromacy



Original Color
9B7154

Protanopia
847A58

Deuteranopia
927553



Tritanopia
9E6D75

Trichromacy



Original Color
9B7154

Protanomaly
8C7757

Deuteranomaly
957453

Tritanomaly
9D6E69

Monochromacy



Original Color
9B7154

Achromatopsia
7A7A7A

Achromatomaly
86776C

CSS Examples

Text

The CSS property to change the color of the text to Hex 9B7154 is called "color". The color property can be set on classes, ids or directly on the HTML element.

This example shows how text in the color #9B7154 looks like.

```
.text, #text, p{  
    color:#9B7154  
}
```

If you want to add a text shadow in that color use the text-shadow property, you can generate a text shadow directly with our [CSS Text Shadow Generator](#).

Here you see how black text with a 4 pixel #9B7154 colored shadow looks like.

```
.shadow{ text-shadow: 4px 4px 2px #9B7154
}
```

Border

The CSS property to change the border of an element to Hex 9B7154 is called "border". The border property can be set on classes, ids or directly on the HTML element.

This example shows the color as border, it can be applied via the CSS property "border" or "border-color".

```
.border, #border, table{ border:4px solid
#9B7154 }
```

If only the border color should be changed use the property `border-color`.

```
.border{ border-color:#9B7154 }
```

If you want to add a box shadow in that color use:

Here you see how a box with a 4 pixel #9B7154 colored shadow looks like.

```
.boxshadow{ -moz-box-shadow:4px 4px 4px  
4px #9B7154; -webkit-box-shadow:4px 4px  
4px 4px #9B7154; box-shadow:4px 4px 4px  
4px #9B7154 }
```

Background

The CSS property to change the background color of an element to Hex 9B7154 is called "background". The background property can be set on classes, ids or directly on the HTML element.

```
.background, #background, body{  
background:#9B7154 }
```

If only the background color should be changed can be used:

```
.background{ background-color:#9B7154 }
```

This example shows the color as background, it is applied via the CSS property "background".

To optimize and compress your CSS code, you can use our [online CSS compressor and optimizer](#) based on csstidy. If you want to create a linear or radial gradient as background or border, check our [CSS Gradient Generator](#).

Hey! You found this booklet interesting? Support Converting Colors with the new Membership Option!

The pro membership hides all ads, plus gives you double the colors in the color bucket, and more awesome pro features!

[Learn more, Memberships starting at \\$2.50/m!](#)

**Follow me
on Twitter!**

@ConvertingColor