

# Converting Colors

Hex(9B724B)

Have a look what the booklet for  
Hex(9B724B) contains.

<b>Hex(9B724B)</b> .....	3
<b><i>Conversions</i></b> .....	4
<b><i>Details</i></b> .....	6
<b><i>Harmonies</i></b> .....	11
<b><i>Previews</i></b> .....	23
<b><i>Color Blindness Simulation</i></b> .....	26
<b><i>CSS Examples</i></b> .....	29

**Color**

**Hex(9B724B)**

# Conversions

## Conversions Part 1

<b>Format</b>	<b>Color</b>
Hex	9B724B
RGB	155, 114, 75
RGB Percent	61%, 45%, 29%
CMY	0.3922, 0.5529, 0.7059
CMYK	0.00, 0.26, 0.52, 0.39
HSL	29°, 35%, 45%
HSV	29°, 52%, 61%
XYZ	20.8049, 19.5112, 9.3261
YIQ	121.8130, 36.9550, -3.4370

# Conversions

## Conversions Part 2

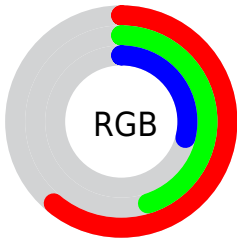
<b>Format</b>	<b>Color</b>
<b>R<sub>YB</sub></b>	155, 151, 75
Decimal	10187339
CIE <sub>Lab</sub>	51.28, 11.33, 27.84
CIE <sub>LCh</sub>	51, 30.057, 67.850
Yxy	19.5112, 0.4191, 0.3930
Android (android.graphics.Color)	4288377419 (0xFF9B724B)
YUV	121.8130, -23.0788, 29.1050
Hunter-Lab	44.1715, 6.7739, 18.4019

# Details

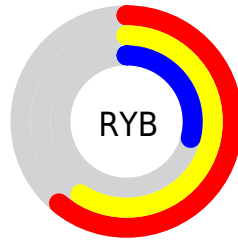
The Hex color **9B724B** is a dark color, and the websafe version is hex **996633**. A complement of this color would be **4B749B**, and the grayscale version is **7A7A7A**.

A 20% lighter version of the original color is **D3A67C**, and **65421E** is the 20% darker color. If you saturate the color by 10%, you get **9B6A3C**, and if you desaturate by 10%, it is **9B7A5B**.

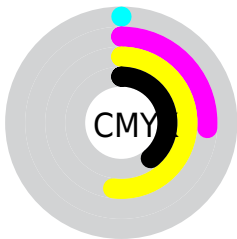
# Distribution



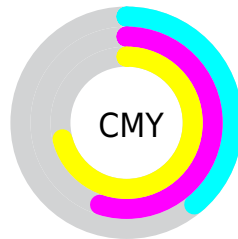
- Red (61%)
- Green (45%)
- Blue (29%)



- Red (61%)
- Yellow (59%)
- Blue (29%)



- Cyan (0%)
- Magenta (26%)
- Yellow (52%)
- Black (39%)



- Cyan (39%)
- Magenta (55%)
- Yellow (71%)

# Brightness & Saturation Gradients

These gradients show how the Hex color 9B724B changes by changing the brightness by 10 percent. The first figure shows a shift by +10% for each color and the second figure -10%.

Similar to the brightness gradients but the following saturation gradients show a change of the Hex color 9B724B by changing the saturation by 10% instead.





9B724B



9B724B

FFFFFF



805934



D3A67C



65421E



F1C197



4C2C06



FFDDB1



331700



FFF9CD



1B0000



FFFFE9



000000



9B724B



9B724B



9B6A3C



9B7A5B



9B622C



9B826A

 9B5A1D

 9B8A7A

 9B520D

 9B9289

 9B4C00

 9B9A99

 9BA2A8

 9BAAB7

 9BB2C7

 9BB9D6

# Harmonies

## Analogous

The Analogous color harmony consists of three colors that are next to each other on the color wheel.



A96A5C



9B724B



847B47

# Triad

The Triadic color harmony groups three colors that are evenly spaced from another and form a triangle on the color wheel.



9B724B



238880



8671A3

# Complementary

The Complementary color scheme is a pair of colors which are on the opposite of each other on the color wheel.



9B724B



4B749B

# Split Complementary

Split-complementary colors differ from the complementary color scheme. The scheme consists of three colors, the original color and two neighbors of the complement color.



607AAD



9B724B



018799

# Square

The Square scheme is like the rectangle color scheme, but the four colors are evenly spaced on the color wheel.



9B724B



498666



3282A9



A0698E

# Rectangle

The Rectangle color scheme consists of four colors that form a rectangle on the color wheel.



9B724B



72804C



3282A9



7A74A8



# Sweetspot

The Sweet Spot groups the original color and five complimentary colors.



9B724B



C9BAAB



9B4B74



665D54



E6E6E6



666666



# Same Dimension

The Same Dimension uses a secret algorithm to generate beautiful new colors.



9B724B



C9894D



9B9A4B



4D4945



8C4400



0D0600



# Inverse Universe

The Inverse Universe completely reimagines the original color for something new.



4B749B



4D8DC9



4B4C9B



45494D



00488C

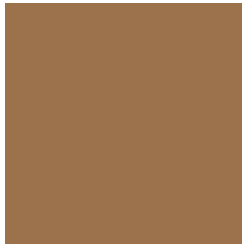


00070D



# Previews

## White Background



This preview shows how the Hex color 9B724B looks on a white background.

## Color Contrast Check

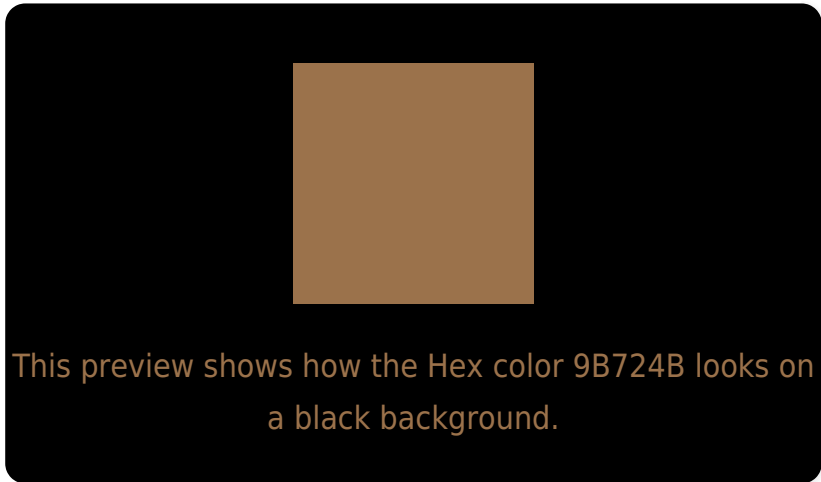
Large Text (above 18pt) WCAG AA ✓ Pass

Any Text WCAG AA × Fail

Large Text (above 18pt) WCAG AAA × Fail

Any Text WCAG AAA × Fail

# Black Background



## Color Contrast Check

Large Text (above 18pt) WCAG AA ✓ Pass

Any Text WCAG AA ✓ Pass

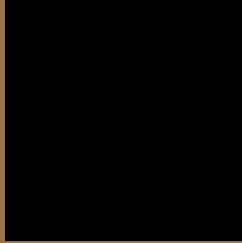
Large Text (above 18pt) WCAG AAA ✓ Pass

Any Text WCAG AAA × Fail

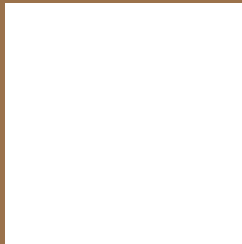
If you want to check with other color combinations, try the [Color Contrast Checker](#).



## Hex 9B724B Background



This preview shows how black text looks on a background with the Hex color 9B724B.



This preview shows how white text looks on a background with the Hex color 9B724B.

# Color Blindness Simulation

Color vision deficiency is a very complex topic, and I could not describe the different causes any better than Wikipedia does, so if you want to learn more, you should check out their [article about color blindness](#).

## Dichromacy



**Original Color**  
9B724B

**Protanopia**  
857A4E

**Deuteranopia**  
94754A



**Tritanopia**  
9F6D75

# Trichromacy



**Original Color**  
9B724B

**Protanomaly**  
8D774D

**Deuteranomaly**  
97744A

**Tritanomaly**  
9E6F66

# Monochromacy



**Original Color**  
9B724B

**Achromatopsia**  
7A7A7A

**Achromatomaly**  
867769

# CSS Examples

## Text

The CSS property to change the color of the text to Hex 9B724B is called "color". The color property can be set on classes, ids or directly on the HTML element.

This example shows how text in the color #9B724B looks like.

```
.text, #text, p{  
    color:#9B724B  
}
```

If you want to add a text shadow in that color use the text-shadow property, you can generate a text shadow directly with our [CSS Text Shadow Generator](#).

Here you see how black text with a 4 pixel #9B724B colored shadow looks like.

```
.shadow{ text-shadow: 4px 4px 2px #9B724B
}
```

## Border

The CSS property to change the border of an element to Hex 9B724B is called "border". The border property can be set on classes, ids or directly on the HTML element.

This example shows the color as border, it can be applied via the CSS property "border" or "border-color".

```
.border, #border, table{ border:4px solid
#9B724B }
```

If only the border color should be changed use the property `border-color`.

```
.border{ border-color:#9B724B }
```

If you want to add a box shadow in that color use:

Here you see how a box with a 4 pixel #9B724B colored shadow looks like.

```
.boxshadow{ -moz-box-shadow:4px 4px 4px  
4px #9B724B; -webkit-box-shadow:4px 4px  
4px 4px #9B724B; box-shadow:4px 4px 4px  
4px #9B724B }
```

# Background

The CSS property to change the background color of an element to Hex 9B724B is called "background". The background property can be set on classes, ids or directly on the HTML element.

```
.background, #background, body{  
background:#9B724B }
```

If only the background color should be changed can be used:

```
.background{ background-color:#9B724B }
```

This example shows the color as background, it is applied via the CSS property "background".

To optimize and compress your CSS code, you can use our [online CSS compressor and optimizer](#) based on csstidy. If you want to create a linear or radial gradient as background or border, check our [CSS Gradient Generator](#).



Hey! You found this booklet interesting? Support Converting Colors with the new Membership Option!

The pro membership hides all ads, plus gives you double the colors in the color bucket, and more awesome pro features!

**[Learn more, Memberships starting at \\$2.50/m!](#)**

**Follow me  
on Twitter!**

@ConvertingColor