

# Converting Colors

Hex(9B7B63)

Have a look what the booklet for  
Hex(9B7B63) contains.

<b>Hex(9B7B63)</b> .....	3
<b><i>Conversions</i></b> .....	4
<b><i>Details</i></b> .....	6
<b><i>Harmonies</i></b> .....	11
<b><i>Previews</i></b> .....	23
<b><i>Color Blindness Simulation</i></b> .....	26
<b><i>CSS Examples</i></b> .....	29

**Color**

**Hex(9B7B63)**

# Conversions

## Conversions Part 1

<b>Format</b>	<b>Color</b>
Hex	9B7B63
RGB	155, 123, 99
RGB Percent	61%, 48%, 39%
CMY	0.3922, 0.5176, 0.6118
CMYK	0.00, 0.21, 0.36, 0.39
HSL	26°, 22%, 50%
HSV	26°, 36%, 61%
XYZ	22.8527, 22.0353, 14.8532
YIQ	129.8320, 26.7760, -0.6800

# Conversions

## Conversions Part 2

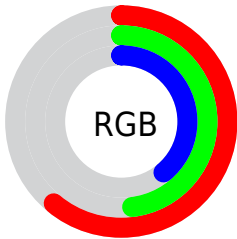
<b>Format</b>	<b>Color</b>
<b>RYB</b>	155, 141, 99
Decimal	10189667
CIELab	54.06, 8.91, 17.85
CIELCh	54, 19.946, 63.470
Yxy	22.0353, 0.3825, 0.3688
Android (android.graphics.Color)	4288379747 (0xFF9B7B63)
YUV	129.8320, -15.2002, 22.0723
Hunter-Lab	46.9418, 4.7509, 14.0989

# Details

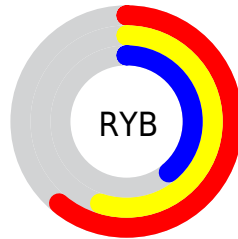
The Hex color **9B7B63** is a dark color, and the websafe version is hex **996666**. A complement of this color would be **63839B**, and the grayscale version is **828282**.

A 20% lighter version of the original color is **D2AF96**, and **664A34** is the 20% darker color. If you saturate the color by 10%, you get **9B7254**, and if you desaturate by 10%, it is **9B8473**.

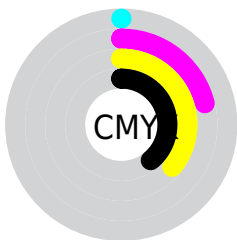
# Distribution



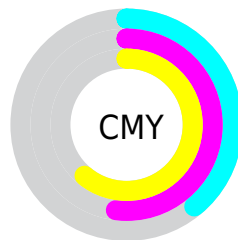
- Red (61%)
- Green (48%)
- Blue (39%)



- Red (61%)
- Yellow (55%)
- Blue (39%)



- Cyan (0%)
- Magenta (21%)
- Yellow (36%)
- Black (39%)



- Cyan (39%)
- Magenta (52%)
- Yellow (61%)

# Brightness & Saturation Gradients

These gradients show how the Hex color 9B7B63 changes by changing the brightness by 10 percent. The first figure shows a shift by +10% for each color and the second figure -10%.

Similar to the brightness gradients but the following saturation gradients show a change of the Hex color 9B7B63 by changing the saturation by 10% instead.



 9B7B63

 9B7B63

FFFFFF

 80624B

 D2AF96

 664A34

 EFCBB1

 4D341F

 FFE7CC

 361E08

 FFFFE8

 1F0700

 000000

 9B7B63

 9B7B63

 9B7254

 9B8473

 9B6944

 9B8D82

 9B6035

 9B9692

 9B5825

 9B9EA1

 9B4F16

 9BA7B1

 9B4606

 9BB0C0

 9B4200

 9BB9D0

 9BC2DF

 9BCBEF

# Harmonies

## Analogous

The Analogous color harmony consists of three colors that are next to each other on the color wheel.



A3766F



9B7B63



8C815F

# Triad

The Triadic color harmony groups three colors that are evenly spaced from another and form a triangle on the color wheel.



9B7B63



558B83



877C9E

# Complementary

The Complementary color scheme is a pair of colors which are on the opposite of each other on the color wheel.



9B7B63



63839B

# Split Complementary

Split-complementary colors differ from the complementary color scheme. The scheme consists of three colors, the original color and two neighbors of the complement color.



6F82A3



9B7B63



4F8A94

# Square

The Square scheme is like the rectangle color scheme, but the four colors are evenly spaced on the color wheel.



9B7B63



668A71



5987A0



997791

# Rectangle

The Rectangle color scheme consists of four colors that form a rectangle on the color wheel.



9B7B63



808461



5987A0



7F7EA1



# Sweetspot

The Sweet Spot groups the original color and five complimentary colors.



9B7B63



C9DBB3



9B6384



665E59



E6E6E6



666666



# Same Dimension

The Same Dimension uses a secret algorithm to generate beautiful new colors.



9B7B63



C99873



9B9663



4D4845



8C3C00



0D0500



# Inverse Universe

The Inverse Universe completely reimagines the original color for something new.



63839B



73A4C9



63689B



45494D



00508C

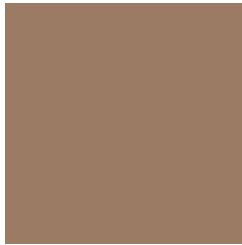


00070D



# Previews

## White Background



This preview shows how the Hex color 9B7B63 looks on a white background.

## Color Contrast Check

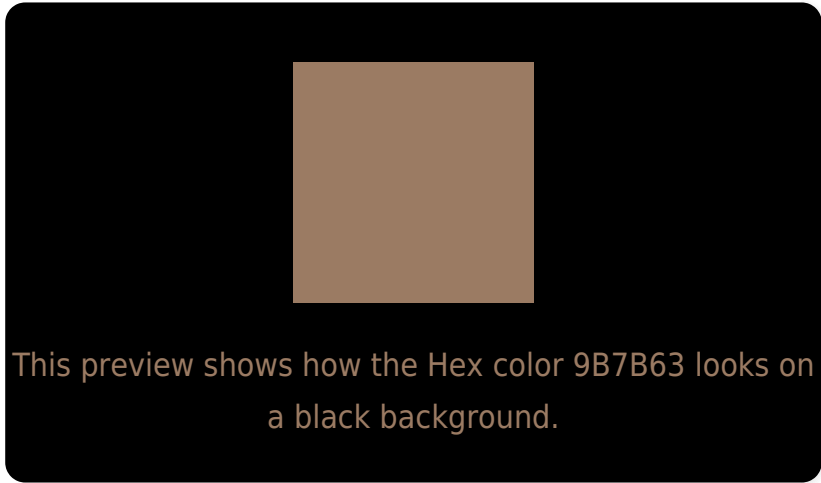
Large Text (above 18pt) WCAG AA ✓ Pass

Any Text WCAG AA × Fail

Large Text (above 18pt) WCAG AAA × Fail

Any Text WCAG AAA × Fail

# Black Background



## Color Contrast Check

Large Text (above 18pt) WCAG AA ✓ Pass

Any Text WCAG AA ✓ Pass

Large Text (above 18pt) WCAG AAA ✓ Pass

Any Text WCAG AAA × Fail

If you want to check with other color combinations, try the [Color Contrast Checker](#).



## Hex 9B7B63 Background



This preview shows how black text looks on a background with the Hex color 9B7B63.



This preview shows how white text looks on a background with the Hex color 9B7B63.

# Color Blindness Simulation

Color vision deficiency is a very complex topic, and I could not describe the different causes any better than Wikipedia does, so if you want to learn more, you should check out their [article about color blindness](#).

## Dichromacy



**Original Color**  
9B7B63

**Protanopia**  
8A8166

**Deuteranopia**  
987C63



**Tritanopia**  
9E7780

# Trichromacy



**Original Color**  
9B7B63

**Protanomaly**  
907F65

**Deuteranomaly**  
997C63

**Tritanomaly**  
9D7875

# Monochromacy



**Original Color**  
9B7B63

**Achromatopsia**  
828282

**Achromatomaly**  
8B7F77

# CSS Examples

## Text

The CSS property to change the color of the text to Hex 9B7B63 is called "color". The color property can be set on classes, ids or directly on the HTML element.

This example shows how text in the color #9B7B63 looks like.

```
.text, #text, p{  
    color:#9B7B63  
}
```

If you want to add a text shadow in that color use the text-shadow property, you can generate a text shadow directly with our [CSS Text Shadow Generator](#).

Here you see how black text with a 4 pixel #9B7B63 colored shadow looks like.

```
.shadow{ text-shadow: 4px 4px 2px #9B7B63
}
```

## Border

The CSS property to change the border of an element to Hex 9B7B63 is called "border". The border property can be set on classes, ids or directly on the HTML element.

This example shows the color as border, it can be applied via the CSS property "border" or "border-color".

```
.border, #border, table{ border:4px solid
#9B7B63 }
```

If only the border color should be changed use the property `border-color`.

```
.border{ border-color:#9B7B63 }
```

If you want to add a box shadow in that color use:

Here you see how a box with a 4 pixel #9B7B63 colored shadow looks like.

```
.boxshadow{ -moz-box-shadow:4px 4px 4px  
4px #9B7B63; -webkit-box-shadow:4px 4px  
4px 4px #9B7B63; box-shadow:4px 4px 4px  
4px #9B7B63 }
```

# Background

The CSS property to change the background color of an element to Hex 9B7B63 is called "background". The background property can be set on classes, ids or directly on the HTML element.

```
.background, #background, body{  
background:#9B7B63 }
```

If only the background color should be changed can be used:

```
.background{ background-color:#9B7B63 }
```

This example shows the color as background, it is applied via the CSS property "background".

To optimize and compress your CSS code, you can use our [online CSS compressor and optimizer](#) based on csstidy. If you want to create a linear or radial gradient as background or border, check our [CSS Gradient Generator](#).



Hey! You found this booklet interesting? Support Converting Colors with the new Membership Option!

The pro membership hides all ads, plus gives you double the colors in the color bucket, and more awesome pro features!

**[Learn more, Memberships starting at \\$2.50/m!](#)**

**Follow me  
on Twitter!**

@ConvertingColor