

# Converting Colors

Hex(9B7B64)

Have a look what the booklet for  
Hex(9B7B64) contains.

<b>Hex(9B7B64)</b> .....	3
<i><b>Conversions</b></i> .....	4
<i><b>Details</b></i> .....	6
<i><b>Harmonies</b></i> .....	11
<i><b>Previews</b></i> .....	23
<i><b>Color Blindness Simulation</b></i> .....	26
<i><b>CSS Examples</b></i> .....	29

**Color**

**Hex(9B7B64)**

# Conversions

## Conversions Part 1

<b>Format</b>	<b>Color</b>
Hex	9B7B64
RGB	155, 123, 100
RGB Percent	61%, 48%, 39%
CMY	0.3922, 0.5176, 0.6078
CMYK	0.00, 0.21, 0.35, 0.39
HSL	25°, 22%, 50%
HSV	25°, 35%, 61%
XYZ	22.9008, 22.0546, 15.1065
YIQ	129.9460, 26.4550, -0.3690

# Conversions

## Conversions Part 2

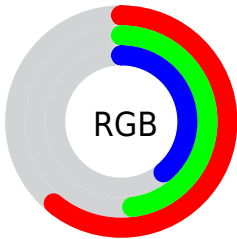
<b>Format</b>	<b>Color</b>
<b>R<sub>YB</sub></b>	155, 140, 100
Decimal	10189668
CIE <sub>Lab</sub>	54.08, 9.04, 17.30
CIE <sub>LCh</sub>	54, 19.518, 62.411
Yxy	22.0546, 0.3813, 0.3672
Android (android.graphics.Color)	4288379748 (0xFF9B7B64)
YUV	129.9460, -14.7634, 21.9724
Hunter-Lab	46.9623, 4.8600, 13.8016

# Details

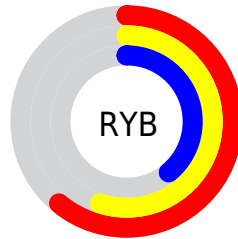
The Hex color **9B7B64** is a dark color, and the websafe version is hex **996666**. A complement of this color would be **64849B**, and the grayscale version is **828282**.

A 20% lighter version of the original color is **D2AF97**, and **674A35** is the 20% darker color. If you saturate the color by 10%, you get **9B7255**, and if you desaturate by 10%, it is **9B8474**.

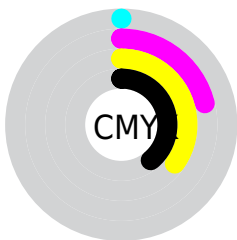
# Distribution



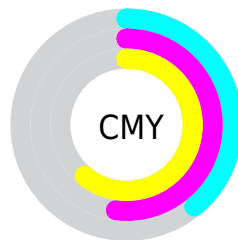
- Red (61%)
- Green (48%)
- Blue (39%)



- Red (61%)
- Yellow (55%)
- Blue (39%)



- Cyan (0%)
- Magenta (21%)
- Yellow (35%)
- Black (39%)



- Cyan (39%)
- Magenta (52%)
- Yellow (61%)

# Brightness & Saturation Gradients

These gradients show how the Hex color 9B7B64 changes by changing the brightness by 10 percent. The first figure shows a shift by +10% for each color and the second figure -10%.

Similar to the brightness gradients but the following saturation gradients show a change of the Hex color 9B7B64 by changing the saturation by 10% instead.



 9B7B64

 9B7B64

FFFFFF

 80624C

 D2AF97

 674A35

 EFCBB2

 4E3420

 FFE7CD

 361E09

 FFFFE9

 200700

 000000

 9B7B64

 9B7B64

 9B7255

 9B8474

 9B6945

 9B8D83

 9B6036

 9B9693

 9B5726

 9B9FA2

 9B4E17

 9BA8B2

 9B4507

 9BB1C1

 9B4100

 9BBAD1

 9BC3E0

 9BCCF0

# Harmonies

## Analogous

The Analogous color harmony consists of three colors that are next to each other on the color wheel.



A37770



9B7B64



8C8160

# Triad

The Triadic color harmony groups three colors that are evenly spaced from another and form a triangle on the color wheel.



9B7B64



578B82



867D9E

# Complementary

The Complementary color scheme is a pair of colors which are on the opposite of each other on the color wheel.



9B7B64



64849B

# Split Complementary

Split-complementary colors differ from the complementary color scheme. The scheme consists of three colors, the original color and two neighbors of the complement color.



6F82A3



9B7B64



518A93

# Square

The Square scheme is like the rectangle color scheme, but the four colors are evenly spaced on the color wheel.



9B7B64



678971



5A879F



987791

# Rectangle

The Rectangle color scheme consists of four colors that form a rectangle on the color wheel.



9B7B64



808462



5A879F



7E7EA0



# Sweetspot

The Sweet Spot groups the original color and five complimentary colors.



9B7B64



C9DBB3



9B6484



665E59



E6E6E6



666666



# Same Dimension

The Same Dimension uses a secret algorithm to generate beautiful new colors.



9B7B64



C99773



9B9664



4D4845



8C3B00



0D0500



# Inverse Universe

The Inverse Universe completely reimagines the original color for something new.



64849B



73A5C9



64699B



45494D



00528C

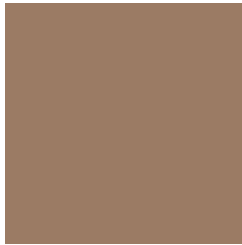


00070D



# Previews

## White Background



This preview shows how the Hex color 9B7B64 looks on a white background.

## Color Contrast Check

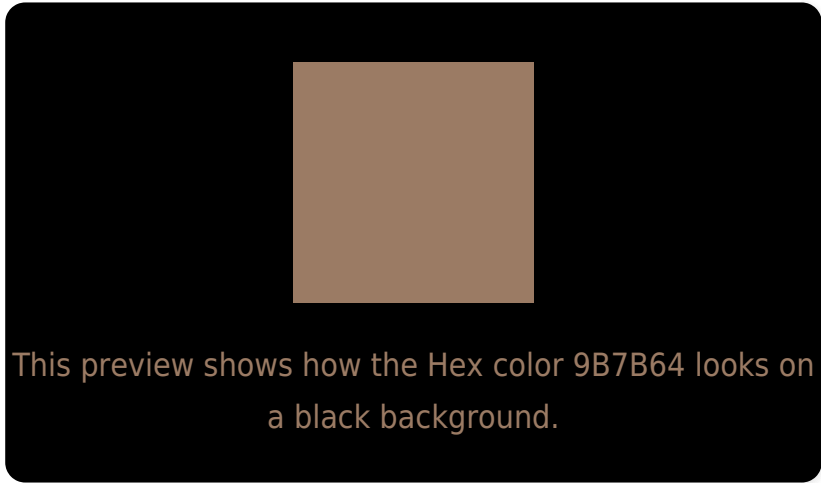
Large Text (above 18pt) WCAG AA ✓ Pass

Any Text WCAG AA × Fail

Large Text (above 18pt) WCAG AAA × Fail

Any Text WCAG AAA × Fail

# Black Background



## Color Contrast Check

Large Text (above 18pt) WCAG AA ✓ Pass

Any Text WCAG AA ✓ Pass

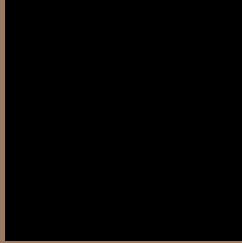
Large Text (above 18pt) WCAG AAA ✓ Pass

Any Text WCAG AAA × Fail

If you want to check with other color combinations, try the [Color Contrast Checker](#).



## Hex 9B7B64 Background



This preview shows how black text looks on a background with the Hex color 9B7B64.



This preview shows how white text looks on a background with the Hex color 9B7B64.

# Color Blindness Simulation

Color vision deficiency is a very complex topic, and I could not describe the different causes any better than Wikipedia does, so if you want to learn more, you should check out their [article about color blindness](#).

## Dichromacy



**Original Color**  
9B7B64

**Protanopia**  
8A8167

**Deuteranopia**  
987C64



**Tritanopia**  
9E7780

# Trichromacy



**Original Color**  
9B7B64

**Protanomaly**  
907F66

**Deuteranomaly**  
997C64

**Tritanomaly**  
9D7876

# Monochromacy



**Original Color**  
9B7B64

**Achromatopsia**  
828282

**Achromatomaly**  
8B7F77

# CSS Examples

## Text

The CSS property to change the color of the text to Hex 9B7B64 is called "color". The color property can be set on classes, ids or directly on the HTML element.

This example shows how text in the color #9B7B64 looks like.

```
.text, #text, p{  
    color:#9B7B64  
}
```

If you want to add a text shadow in that color use the text-shadow property, you can generate a text shadow directly with our [CSS Text Shadow Generator](#).

Here you see how black text with a 4 pixel #9B7B64 colored shadow looks like.

```
.shadow{ text-shadow: 4px 4px 2px #9B7B64
}
```

## Border

The CSS property to change the border of an element to Hex 9B7B64 is called "border". The border property can be set on classes, ids or directly on the HTML element.

This example shows the color as border, it can be applied via the CSS property "border" or "border-color".

```
.border, #border, table{ border:4px solid
#9B7B64 }
```

If only the border color should be changed use the property `border-color`.

```
.border{ border-color:#9B7B64 }
```

If you want to add a box shadow in that color use:

Here you see how a box with a 4 pixel #9B7B64 colored shadow looks like.

```
.boxshadow{ -moz-box-shadow:4px 4px 4px  
4px #9B7B64; -webkit-box-shadow:4px 4px  
4px 4px #9B7B64; box-shadow:4px 4px 4px  
4px #9B7B64 }
```

# Background

The CSS property to change the background color of an element to Hex 9B7B64 is called "background". The background property can be set on classes, ids or directly on the HTML element.

```
.background, #background, body{  
background:#9B7B64 }
```

If only the background color should be changed can be used:

```
.background{ background-color:#9B7B64 }
```

This example shows the color as background, it is applied via the CSS property "background".

To optimize and compress your CSS code, you can use our [online CSS compressor and optimizer](#) based on csstidy. If you want to create a linear or radial gradient as background or border, check our [CSS Gradient Generator](#).



Hey! You found this booklet interesting? Support Converting Colors with the new Membership Option!

The pro membership hides all ads, plus gives you double the colors in the color bucket, and more awesome pro features!

**[Learn more, Memberships starting at \\$2.50/m!](#)**

**Follow me  
on Twitter!**

@ConvertingColor