

# Converting Colors

Hex(9C6B48)

Have a look what the booklet for  
Hex(9C6B48) contains.

<b>Hex(9C6B48)</b> .....	3
<i><b>Conversions</b></i> .....	4
<i><b>Details</b></i> .....	6
<i><b>Harmonies</b></i> .....	11
<i><b>Previews</b></i> .....	23
<i><b>Color Blindness Simulation</b></i> .....	26
<i><b>CSS Examples</b></i> .....	29

**Color**

**Hex(9C6B48)**

# Conversions

## Conversions Part 1

<b>Format</b>	<b>Color</b>
Hex	9C6B48
RGB	156, 107, 72
RGB Percent	61%, 42%, 28%
CMY	0.3882, 0.5804, 0.7176
CMYK	0.00, 0.31, 0.54, 0.39
HSL	25°, 37%, 45%
HSV	25°, 54%, 61%
XYZ	20.1377, 18.0512, 8.5537
YIQ	117.6610, 40.4390, -0.4970

# Conversions

## Conversions Part 2

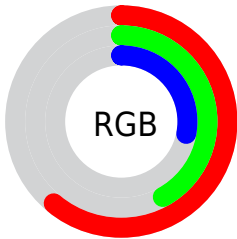
<b>Format</b>	<b>Color</b>
<b>R<sub>YB</sub></b>	156, 132, 72
Decimal	10251080
CIE <sub>Lab</sub>	49.56, 15.50, 27.37
CIE <sub>LCh</sub>	50, 31.457, 60.484
Yxy	18.0512, 0.4308, 0.3862
Android (android.graphics.Color)	4288441160 (0xFF9C6B48)
YUV	117.6610, -22.5109, 33.6233
Hunter-Lab	42.4867, 10.2531, 17.8040

# Details

The Hex color **9C6B48** is a dark color, and the websafe version is hex **996633**. A complement of this color would be **48799C**, and the grayscale version is **767676**.

A 20% lighter version of the original color is **D59F79**, and **663B1B** is the 20% darker color. If you saturate the color by 10%, you get **9C6238**, and if you desaturate by 10%, it is **9C7458**.

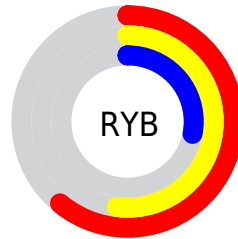
# Distribution



Red (61%)

Green (42%)

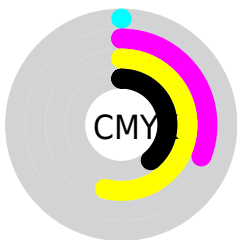
Blue (28%)



Red (61%)

Yellow (52%)

Blue (28%)

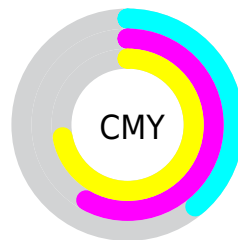


Cyan (0%)

Magenta (31%)

Yellow (54%)

Black (39%)



Cyan (39%)

Magenta (58%)

Yellow (72%)

# Brightness & Saturation Gradients

These gradients show how the Hex color 9C6B48 changes by changing the brightness by 10 percent. The first figure shows a shift by +10% for each color and the second figure -10%.

Similar to the brightness gradients but the following saturation gradients show a change of the Hex color 9C6B48 by changing the saturation by 10% instead.





9C6B48



9C6B48

FFFFFF



815331



D59F79



663B1B



F2BA93



4C2503



FFD5AE



321100



FFF2C9



1B0001



FFFFE5



000000



9C6B48



9C6B48



9C6238



9C7458



9C5929



9C7D67

 9C5019

 9C8677

 9C470A

 9C8F86

 9C4100

 9C9996

 9CA2A6

 9CABB5

 9CB4C5

 9CBDD4

# Harmonies

## Analogous

The Analogous color harmony consists of three colors that are next to each other on the color wheel.



A8635C



9C6B48



867440

# Triad

The Triadic color harmony groups three colors that are evenly spaced from another and form a triangle on the color wheel.



9C6B48



1F8475



796FA4

# Complementary

The Complementary color scheme is a pair of colors which are on the opposite of each other on the color wheel.



9C6B48



48799C

# Split Complementary

Split-complementary colors differ from the complementary color scheme. The scheme consists of three colors, the original color and two neighbors of the complement color.



4E78AB



9C6B48



008390

# Square

The Square scheme is like the rectangle color scheme, but the four colors are evenly spaced on the color wheel.



9C6B48



4A825B



0D7FA4



986591

# Rectangle

The Rectangle color scheme consists of four colors that form a rectangle on the color wheel.



9C6B48



757A43



0D7FA4



6C72A8



# Sweetspot

The Sweet Spot groups the original color and five complimentary colors.



9C6B48



CCB9AB



9C4879



665B53



E6E6E6



666666



# Same Dimension

The Same Dimension uses a secret algorithm to generate beautiful new colors.



9C6B48



CC7F47



9C9548



4F4A47



8F3C00



0F0600



# Inverse Universe

The Inverse Universe completely reimagines the original color for something new.



48799C



4795CC



484F9C



474C4F



00538F

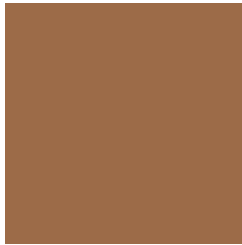


00090F



# Previews

## White Background



This preview shows how the Hex color 9C6B48 looks on a white background.

## Color Contrast Check

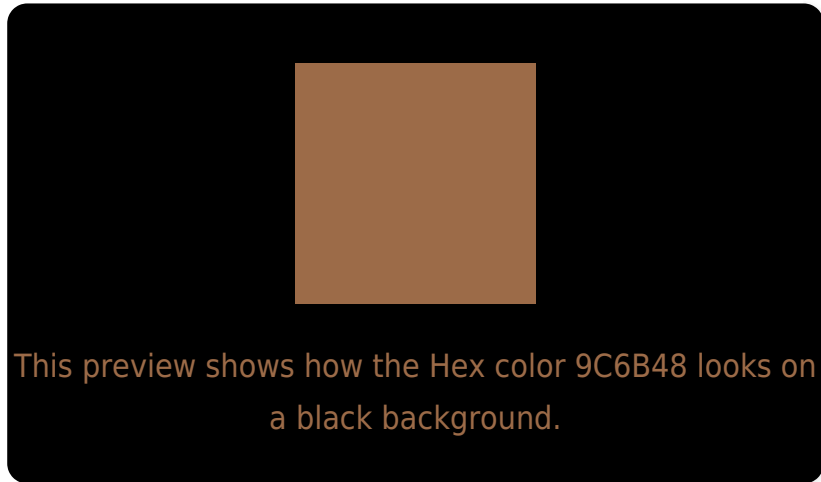
Large Text (above 18pt) WCAG AA ✓ Pass

Any Text WCAG AA ✓ Pass

Large Text (above 18pt) WCAG AAA ✓ Pass

Any Text WCAG AAA × Fail

# Black Background



## Color Contrast Check

Large Text (above 18pt) WCAG AA ✓ Pass

Any Text WCAG AA ✓ Pass

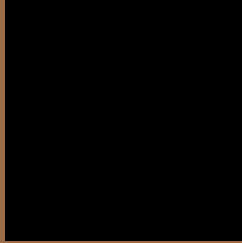
Large Text (above 18pt) WCAG AAA ✓ Pass

Any Text WCAG AAA × Fail

If you want to check with other color combinations, try the [Color Contrast Checker](#).



## Hex 9C6B48 Background



This preview shows how black text looks on a background with the Hex color 9C6B48.



This preview shows how white text looks on a background with the Hex color 9C6B48.

# Color Blindness Simulation

Color vision deficiency is a very complex topic, and I could not describe the different causes any better than Wikipedia does, so if you want to learn more, you should check out their [article about color blindness](#).

## Dichromacy



**Original Color**  
9C6B48

**Protanopia**  
81764C

**Deuteranopia**  
8F7147



**Tritanopia**  
9F666E

# Trichromacy



**Original Color**  
9C6B48

**Protanomaly**  
8B724B

**Deuteranomaly**  
946F47

**Tritanomaly**  
9E6860

# Monochromacy



**Original Color**  
9C6B48

**Achromatopsia**  
767676

**Achromatomaly**  
847265

# CSS Examples

## Text

The CSS property to change the color of the text to Hex 9C6B48 is called "color". The color property can be set on classes, ids or directly on the HTML element.

This example shows how text in the color #9C6B48 looks like.

```
.text, #text, p{  
    color:#9C6B48  
}
```

If you want to add a text shadow in that color use the text-shadow property, you can generate a text shadow directly with our [CSS Text Shadow Generator](#).

Here you see how black text with a 4 pixel #9C6B48 colored shadow looks like.

```
.shadow{ text-shadow: 4px 4px 2px #9C6B48  
}
```

## Border

The CSS property to change the border of an element to Hex 9C6B48 is called "border". The border property can be set on classes, ids or directly on the HTML element.

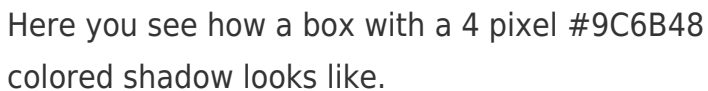
This example shows the color as border, it can be applied via the CSS property "border" or "border-color".

```
.border, #border, table{ border:4px solid  
#9C6B48 }
```

If only the border color should be changed use the property `border-color`.

```
.border{ border-color:#9C6B48 }
```

If you want to add a box shadow in that color use:



Here you see how a box with a 4 pixel #9C6B48 colored shadow looks like.

```
.boxshadow{ -moz-box-shadow:4px 4px 4px  
4px #9C6B48; -webkit-box-shadow:4px 4px  
4px 4px #9C6B48; box-shadow:4px 4px 4px  
4px #9C6B48 }
```

# Background

The CSS property to change the background color of an element to Hex 9C6B48 is called "background". The background property can be set on classes, ids or directly on the HTML element.

```
.background, #background, body{  
background:#9C6B48 }
```

If only the background color should be changed can be used:

```
.background{ background-color:#9C6B48 }
```

This example shows the color as background, it is applied via the CSS property "background".

To optimize and compress your CSS code, you can use our [online CSS compressor and optimizer](#) based on csstidy. If you want to create a linear or radial gradient as background or border, check our [CSS Gradient Generator](#).



Hey! You found this booklet interesting? Support Converting Colors with the new Membership Option!

The pro membership hides all ads, plus gives you double the colors in the color bucket, and more awesome pro features!

**[Learn more, Memberships starting at \\$2.50/m!](#)**

**Follow me  
on Twitter!**

@ConvertingColor