

# Converting Colors

Hex(9C7A64)

Have a look what the booklet for  
Hex(9C7A64) contains.

<b>Hex(9C7A64)</b> .....	3
<b><i>Conversions</i></b> .....	4
<b><i>Details</i></b> .....	6
<b><i>Harmonies</i></b> .....	11
<b><i>Previews</i></b> .....	23
<b><i>Color Blindness Simulation</i></b> .....	26
<b><i>CSS Examples</i></b> .....	29

**Color**

**Hex(9C7A64)**

# Conversions

## Conversions Part 1

<b>Format</b>	<b>Color</b>
Hex	9C7A64
RGB	156, 122, 100
RGB Percent	61%, 48%, 39%
CMY	0.3882, 0.5216, 0.6078
CMYK	0.00, 0.22, 0.36, 0.39
HSL	24°, 22%, 50%
HSV	24°, 36%, 61%
XYZ	22.9701, 21.9071, 15.0744
YIQ	129.6580, 27.3260, 0.3660

# Conversions

## Conversions Part 2

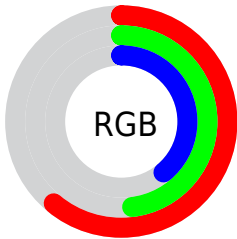
<b>Format</b>	<b>Color</b>
<b>R<sub>YB</sub></b>	156, 136, 100
Decimal	10254948
CIE <sub>Lab</sub>	53.93, 10.03, 17.10
CIE <sub>LCh</sub>	54, 19.825, 59.615
Yxy	21.9071, 0.3831, 0.3654
Android (android.graphics.Color)	4288445028 (0xFF9C7A64)
YUV	129.6580, -14.6214, 23.1019
Hunter-Lab	46.8050, 5.6921, 13.6681

# Details

The Hex color **9C7A64** is a dark color, and the websafe version is hex **996666**. A complement of this color would be **64869C**, and the grayscale version is **828282**.

A 20% lighter version of the original color is **D4AE97**, and **674935** is the 20% darker color. If you saturate the color by 10%, you get **9C7154**, and if you desaturate by 10%, it is **9C8374**.

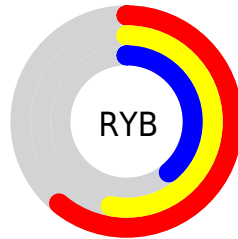
# Distribution



Red (61%)

Green (48%)

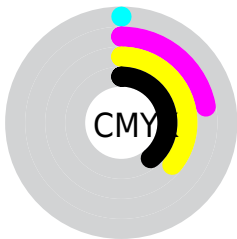
Blue (39%)



Red (61%)

Yellow (53%)

Blue (39%)

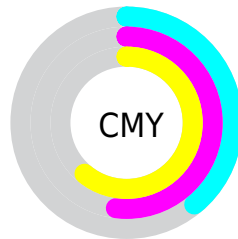


Cyan (0%)

Magenta (22%)

Yellow (36%)

Black (39%)



Cyan (39%)

Magenta (52%)

Yellow (61%)

# Brightness & Saturation Gradients

These gradients show how the Hex color 9C7A64 changes by changing the brightness by 10 percent. The first figure shows a shift by +10% for each color and the second figure -10%.

Similar to the brightness gradients but the following saturation gradients show a change of the Hex color 9C7A64 by changing the saturation by 10% instead.



 9C7A64

 9C7A64

FFFFFF

 81614C

 D4AE97

 674935

 F0CAB2

 4E3320

 FFE6CD

 361D09

 FFFFE9

 200600

 000000

 9C7A64

 9C7A64

 9C7154

 9C8374

 9C6745

 9C8D83

 9C5E35

 9C9693

 9C5426

 9CA0A2

 9C4B16

 9CA9B2

 9C4106

 9CB3C2

 9C3D00

 9CBCD1

 9CC6E1

 9CCFF0

# Harmonies

## Analogous

The Analogous color harmony consists of three colors that are next to each other on the color wheel.



A37671



9C7A64



8E805F

# Triad

The Triadic color harmony groups three colors that are evenly spaced from another and form a triangle on the color wheel.



9C7A64



578B80



837D9F

# Complementary

The Complementary color scheme is a pair of colors which are on the opposite of each other on the color wheel.



9C7A64



64869C

# Split Complementary

Split-complementary colors differ from the complementary color scheme. The scheme consists of three colors, the original color and two neighbors of the complement color.



6C82A3



9C7A64



4F8A91

# Square

The Square scheme is like the rectangle color scheme, but the four colors are evenly spaced on the color wheel.



9C7A64



68896F



57879E



977792

# Rectangle

The Rectangle color scheme consists of four colors that form a rectangle on the color wheel.



9C7A64



828361



57879E



7C7FA1



# Sweetspot

The Sweet Spot groups the original color and five complimentary colors.



9C7A64



CCBEB6



9C6487



665E59



E6E6E6



666666



# Same Dimension

The Same Dimension uses a secret algorithm to generate beautiful new colors.



9C7A64



CC9774



9C9564



4F4A47



8F3800



0F0600



# Inverse Universe

The Inverse Universe completely reimagines the original color for something new.



64869C



74AACC



646B9C



474C4F



00578F

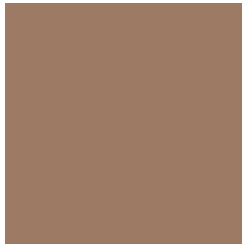


00090F



# Previews

## White Background



This preview shows how the Hex color 9C7A64 looks on a white background.

## Color Contrast Check

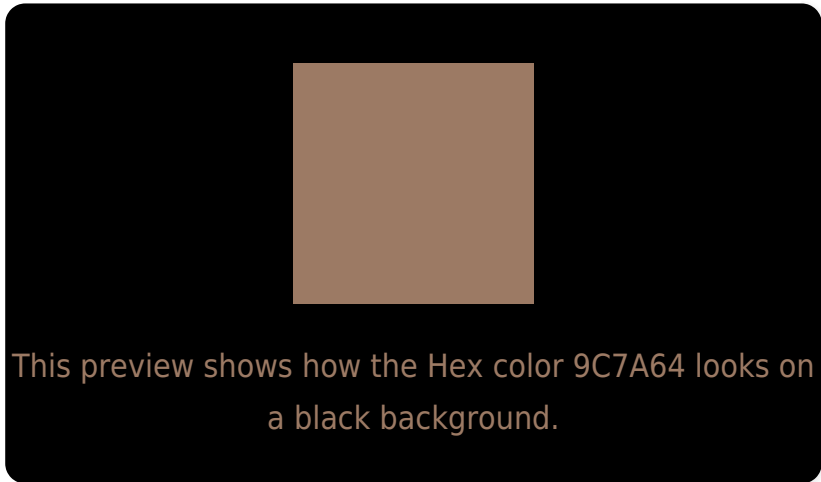
Large Text (above 18pt) WCAG AA ✓ Pass

Any Text WCAG AA × Fail

Large Text (above 18pt) WCAG AAA × Fail

Any Text WCAG AAA × Fail

# Black Background



## Color Contrast Check

Large Text (above 18pt) WCAG AA ✓ Pass

Any Text WCAG AA ✓ Pass

Large Text (above 18pt) WCAG AAA ✓ Pass

Any Text WCAG AAA × Fail

If you want to check with other color combinations, try the [Color Contrast Checker](#).



## Hex 9C7A64 Background



This preview shows how black text looks on a background with the Hex color 9C7A64.



This preview shows how white text looks on a background with the Hex color 9C7A64.

# Color Blindness Simulation

Color vision deficiency is a very complex topic, and I could not describe the different causes any better than Wikipedia does, so if you want to learn more, you should check out their [article about color blindness](#).


## Dichromacy



**Original Color**  
9C7A64

**Protanopia**  
898167

**Deuteranopia**  
977C64



**Tritanopia**  
9F767F

# Trichromacy



**Original Color**

9C7A64

**Protanomaly**

907E66

**Deuteranomaly**

997B64

**Tritanomaly**

9E7775

# Monochromacy



**Original Color**

9C7A64

**Achromatopsia**

828282

**Achromatomaly**

8B7F77

# CSS Examples

## Text

The CSS property to change the color of the text to Hex 9C7A64 is called "color". The color property can be set on classes, ids or directly on the HTML element.

This example shows how text in the color #9C7A64 looks like.

```
.text, #text, p{  
    color:#9C7A64  
}
```

If you want to add a text shadow in that color use the text-shadow property, you can generate a text shadow directly with our [CSS Text Shadow Generator](#).

Here you see how black text with a 4 pixel #9C7A64 colored shadow looks like.

```
.shadow{ text-shadow: 4px 4px 2px #9C7A64
}
```

## Border

The CSS property to change the border of an element to Hex 9C7A64 is called "border". The border property can be set on classes, ids or directly on the HTML element.

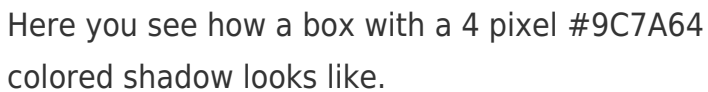
This example shows the color as border, it can be applied via the CSS property "border" or "border-color".

```
.border, #border, table{ border:4px solid
#9C7A64 }
```

If only the border color should be changed use the property `border-color`.

```
.border{ border-color:#9C7A64 }
```

If you want to add a box shadow in that color use:



Here you see how a box with a 4 pixel #9C7A64 colored shadow looks like.

```
.boxshadow{ -moz-box-shadow:4px 4px 4px  
4px #9C7A64; -webkit-box-shadow:4px 4px  
4px 4px #9C7A64; box-shadow:4px 4px 4px  
4px #9C7A64 }
```

# Background

The CSS property to change the background color of an element to Hex 9C7A64 is called "background". The background property can be set on classes, ids or directly on the HTML element.

```
.background, #background, body{  
background:#9C7A64 }
```

If only the background color should be changed can be used:

```
.background{ background-color:#9C7A64 }
```

This example shows the color as background, it is applied via the CSS property "background".

To optimize and compress your CSS code, you can use our [online CSS compressor and optimizer](#) based on csstidy. If you want to create a linear or radial gradient as background or border, check our [CSS Gradient Generator](#).



Hey! You found this booklet interesting? Support Converting Colors with the new Membership Option!

The pro membership hides all ads, plus gives you double the colors in the color bucket, and more awesome pro features!

**[Learn more, Memberships starting at \\$2.50/m!](#)**

**Follow me  
on Twitter!**

@ConvertingColor