

Converting Colors

Hex(9C7B5C)

Have a look what the booklet for
Hex(9C7B5C) contains.

Hex(9C7B5C)	3
<i>Conversions</i>	4
<i>Details</i>	6
<i>Harmonies</i>	11
<i>Previews</i>	23
<i>Color Blindness Simulation</i>	26
<i>CSS Examples</i>	29

Color

Hex(9C7B5C)

Conversions

Conversions Part 1

Format	Color
Hex	9C7B5C
RGB	156, 123, 92
RGB Percent	61%, 48%, 36%
CMY	0.3882, 0.5176, 0.6392
CMYK	0.00, 0.21, 0.41, 0.39
HSL	29°, 26%, 49%
HSV	29°, 41%, 61%
XYZ	22.7250, 22.0065, 13.1752
YIQ	129.3330, 29.6190, -2.6450

Conversions

Conversions Part 2

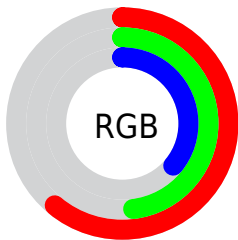
Format	Color
RYB	156, 152, 92
Decimal	10255196
CIELab	54.03, 8.46, 21.83
CIELCh	54, 23.408, 68.811
Yxy	22.0065, 0.3924, 0.3800
Android (android.graphics.Color)	4288445276 (0xFF9C7B5C)
YUV	129.3330, -18.4052, 23.3870
Hunter-Lab	46.9111, 4.3758, 16.1860

Details

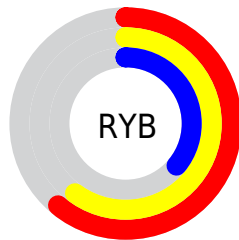
The Hex color **9C7B5C** is a dark color, and the websafe version is hex **996633**. A complement of this color would be **5C7D9C**, and the grayscale version is **818181**.

A 20% lighter version of the original color is **D4AF8E**, and **674A2E** is the 20% darker color. If you saturate the color by 10%, you get **9C734C**, and if you desaturate by 10%, it is **9C836C**.

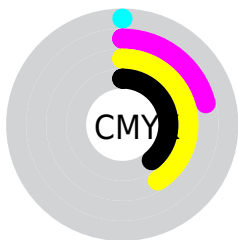
Distribution



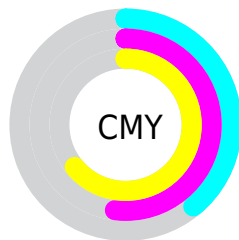
- Red (61%)
- Green (48%)
- Blue (36%)



- Red (61%)
- Yellow (60%)
- Blue (36%)



- Cyan (0%)
- Magenta (21%)
- Yellow (41%)
- Black (39%)



- Cyan (39%)
- Magenta (52%)
- Yellow (64%)

Brightness & Saturation Gradients


These gradients show how the Hex color 9C7B5C changes by changing the brightness by 10 percent. The first figure shows a shift by +10% for each color and the second figure -10%.

Similar to the brightness gradients but the following saturation gradients show a change of the Hex color 9C7B5C by changing the saturation by 10% instead.

 9C7B5C

 9C7B5C

FFFFFF

 816244

 D4AF8E

 674A2E

 F1CBA9

 4E3418

 FFE7C4

 361E00

 FFFF00

 1F0700

FFFFFFD

 000000

 9C7B5C

 9C7B5C

 9C734C

 9C836C

 9C6B3D

 9C8B7B

 9C632D

 9C938B

 9C5B1E

 9C9B9A

 9C530E

 9CA3AA

 9C4C00

 9CABBA

 9CB3C9

 9CBBD9

 9CC3E8

Harmonies

Analogous

The Analogous color harmony consists of three colors that are next to each other on the color wheel.



A77569



9C7B5C



8A8259

Triad

The Triadic color harmony groups three colors that are evenly spaced from another and form a triangle on the color wheel.



9C7B5C



488C87



8C7AA1

Complementary

The Complementary color scheme is a pair of colors which are on the opposite of each other on the color wheel.



9C7B5C



5C7D9C

Split Complementary

Split-complementary colors differ from the complementary color scheme. The scheme consists of three colors, the original color and two neighbors of the complement color.



7081A9



9C7B5C



438B9A

Square

The Square scheme is like the rectangle color scheme, but the four colors are evenly spaced on the color wheel.



9C7B5C



5C8B72



5387A6



A07490

Rectangle

The Rectangle color scheme consists of four colors that form a rectangle on the color wheel.



9C7B5C



7B865D



5387A6



837CA4

Sweetspot

The Sweet Spot groups the original color and five complimentary colors.



9C7B5C



CCBFB4



9C5C7D



665F58



E6E6E6



666666

Same Dimension

The Same Dimension uses a secret algorithm to generate beautiful new colors.



9C7B5C



CC9868



9C9B5C



4F4B47



8F4500



0F0700

Inverse Universe

The Inverse Universe completely reimagines the original color for something new.



5C7D9C



689CCC



5C5D9C



474B4F



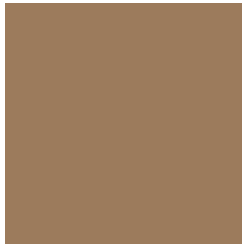
004A8F



00080F

Previews

White Background



This preview shows how the Hex color 9C7B5C looks on a white background.

Color Contrast Check

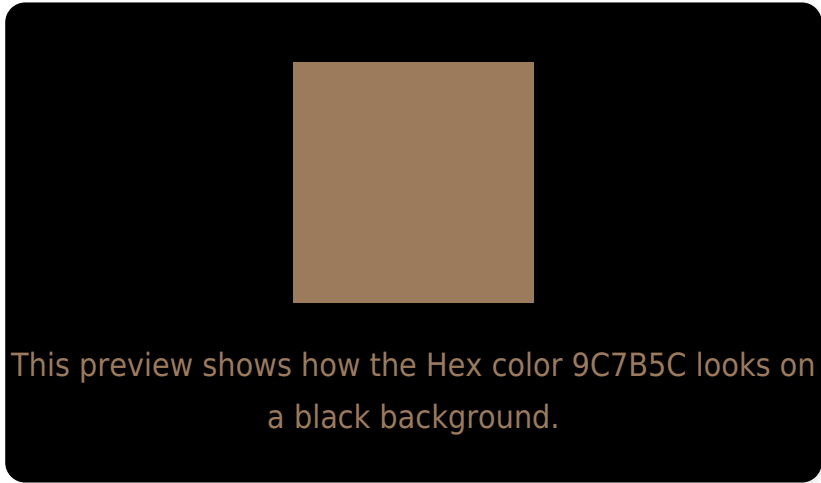
Large Text (above 18pt) WCAG AA ✓ Pass

Any Text WCAG AA × Fail

Large Text (above 18pt) WCAG AAA × Fail

Any Text WCAG AAA × Fail

Black Background



Color Contrast Check

Large Text (above 18pt) WCAG AA ✓ Pass

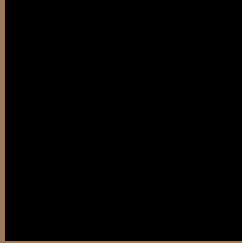
Any Text WCAG AA ✓ Pass

Large Text (above 18pt) WCAG AAA ✓ Pass

Any Text WCAG AAA × Fail

If you want to check with other color combinations, try the [Color Contrast Checker](#).

Hex 9C7B5C Background



This preview shows how black text looks on a background with the Hex color 9C7B5C.



This preview shows how white text looks on a background with the Hex color 9C7B5C.

Color Blindness Simulation

Color vision deficiency is a very complex topic, and I could not describe the different causes any better than Wikipedia does, so if you want to learn more, you should check out their [article about color blindness](#).


Dichromacy



Original Color
9C7B5C

Protanopia
8B815F

Deuteranopia
9A7C5C



Tritanopia
9F767F

Trichromacy



Original Color
9C7B5C

Protanomaly
917F5E

Deuteranomaly
9B7C5C

Tritanomaly
9E7872

Monochromacy



Original Color
9C7B5C

Achromatopsia
818181

Achromatomaly
8B7F74

CSS Examples

Text

The CSS property to change the color of the text to Hex 9C7B5C is called "color". The color property can be set on classes, ids or directly on the HTML element.

This example shows how text in the color #9C7B5C looks like.

```
.text, #text, p{  
    color:#9C7B5C  
}
```

If you want to add a text shadow in that color use the text-shadow property, you can generate a text shadow directly with our [CSS Text Shadow Generator](#).

Here you see how black text with a 4 pixel #9C7B5C colored shadow looks like.

```
.shadow{ text-shadow: 4px 4px 2px #9C7B5C
}
```

Border

The CSS property to change the border of an element to Hex 9C7B5C is called "border". The border property can be set on classes, ids or directly on the HTML element.

This example shows the color as border, it can be applied via the CSS property "border" or "border-color".

```
.border, #border, table{ border:4px solid
#9C7B5C }
```

If only the border color should be changed use the property `border-color`.

```
.border{ border-color:#9C7B5C }
```

If you want to add a box shadow in that color use:

Here you see how a box with a 4 pixel #9C7B5C colored shadow looks like.

```
.boxshadow{ -moz-box-shadow:4px 4px 4px  
4px #9C7B5C; -webkit-box-shadow:4px 4px  
4px 4px #9C7B5C; box-shadow:4px 4px 4px  
4px #9C7B5C }
```

Background

The CSS property to change the background color of an element to Hex 9C7B5C is called "background". The background property can be set on classes, ids or directly on the HTML element.

```
.background, #background, body{  
background:#9C7B5C }
```

If only the background color should be changed can be used:

```
.background{ background-color:#9C7B5C }
```

This example shows the color as background, it is applied via the CSS property "background".

To optimize and compress your CSS code, you can use our [online CSS compressor and optimizer](#) based on csstidy. If you want to create a linear or radial gradient as background or border, check our [CSS Gradient Generator](#).

Hey! You found this booklet interesting? Support Converting Colors with the new Membership Option!

The pro membership hides all ads, plus gives you double the colors in the color bucket, and more awesome pro features!

[Learn more, Memberships starting at \\$2.50/m!](#)

**Follow me
on Twitter!**

@ConvertingColor