

# Converting Colors

Hex(9D6D47)

Have a look what the booklet for  
Hex(9D6D47) contains.

<b>Hex(9D6D47)</b> .....	3
<i><b>Conversions</b></i> .....	4
<i><b>Details</b></i> .....	6
<i><b>Harmonies</b></i> .....	11
<i><b>Previews</b></i> .....	23
<i><b>Color Blindness Simulation</b></i> .....	26
<i><b>CSS Examples</b></i> .....	29

**Color**

**Hex(9D6D47)**

# Conversions

## Conversions Part 1

<b>Format</b>	<b>Color</b>
Hex	9D6D47
RGB	157, 109, 71
RGB Percent	62%, 43%, 28%
CMY	0.3843, 0.5725, 0.7216
CMYK	0.00, 0.31, 0.55, 0.38
HSL	27°, 38%, 45%
HSV	27°, 55%, 62%
XYZ	20.5106, 18.5603, 8.4627
YIQ	119.0200, 40.8060, -1.6420

# Conversions

## Conversions Part 2

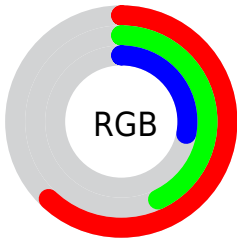
<b>Format</b>	<b>Color</b>
<b>RYB</b>	157, 139, 71
Decimal	10317127
CIELab	50.17, 14.69, 28.73
CIElCh	50, 32.272, 62.913
Yxy	18.5603, 0.4315, 0.3905
Android (android.graphics.Color)	4288507207 (0xFF9D6D47)
YUV	119.0200, -23.6739, 33.3085
Hunter-Lab	43.0817, 9.5885, 18.5106

# Details

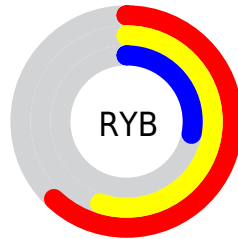
The Hex color **9D6D47** is a dark color, and the websafe version is hex **996633**. A complement of this color would be **47779D**, and the grayscale version is **777777**.

A 20% lighter version of the original color is **D6A178**, and **673D1A** is the 20% darker color. If you saturate the color by 10%, you get **9D6437**, and if you desaturate by 10%, it is **9D7657**.

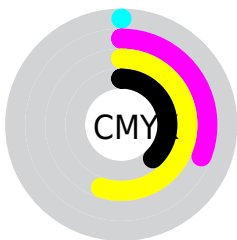
# Distribution



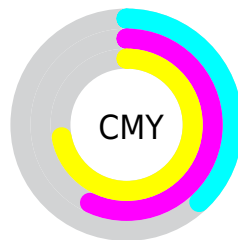
- Red (62%)
- Green (43%)
- Blue (28%)



- Red (62%)
- Yellow (55%)
- Blue (28%)



- Cyan (0%)
- Magenta (31%)
- Yellow (55%)
- Black (38%)



- Cyan (38%)
- Magenta (57%)
- Yellow (72%)

# Brightness & Saturation Gradients

These gradients show how the Hex color 9D6D47 changes by changing the brightness by 10 percent. The first figure shows a shift by +10% for each color and the second figure -10%.


Similar to the brightness gradients but the following saturation gradients show a change of the Hex color 9D6D47 by changing the saturation by 10% instead.



 9D6D47

 9D6D47

FFFFFF

 815530

 D6A178

 673D1A

 F3BC92

 4D2701

 FFD7AD

 331200

 FFF4C8

 1C0001

 FFFFE4

 000000

 9D6D47

 9D6D47

 9D6437

 9D7657

 9D5B28

 9D7F66

 9D5318

 9D8776

 9D4A08

 9D9086

 9D4500

 9D9996

 9DA2A5

 9DAAB5

 9DB3C5

 9DBCD4

# Harmonies

## Analogous

The Analogous color harmony consists of three colors that are next to each other on the color wheel.



AA655B



9D6D47



867740

# Triad

The Triadic color harmony groups three colors that are evenly spaced from another and form a triangle on the color wheel.



9D6D47



178679



7E6FA5

# Complementary

The Complementary color scheme is a pair of colors which are on the opposite of each other on the color wheel.



9D6D47



47779D

# Split Complementary

Split-complementary colors differ from the complementary color scheme. The scheme consists of three colors, the original color and two neighbors of the complement color.



5279AE



9D6D47



008594

# Square

The Square scheme is like the rectangle color scheme, but the four colors are evenly spaced on the color wheel.



9D6D47



47845D



0F81A8



9C6691

# Rectangle

The Rectangle color scheme consists of four colors that form a rectangle on the color wheel.



9D6D47



747C44



0F81A8



7073AA



# Sweetspot

The Sweet Spot groups the original color and five complimentary colors.



9D6D47



CCBAAB



9D4778



665B53



E6E6E6



666666



# Same Dimension

The Same Dimension uses a secret algorithm to generate beautiful new colors.



9D6D47



CC8145



9D9747



4F4B47



8F3F00



0F0700



# Inverse Universe

The Inverse Universe completely reimagines the original color for something new.



47779D



4591CC



474D9D



474C4F



00508F

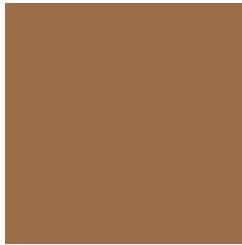


00090F



# Previews

## White Background



This preview shows how the Hex color 9D6D47 looks on a white background.

## Color Contrast Check

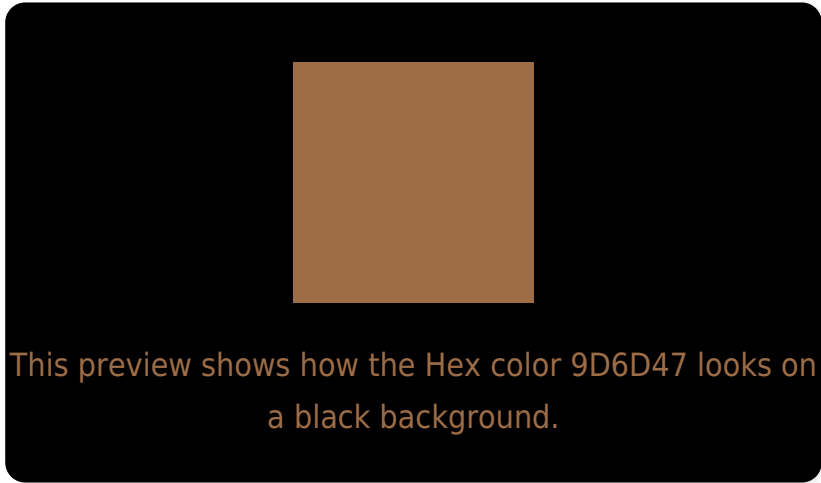
Large Text (above 18pt) WCAG AA ✓ Pass

Any Text WCAG AA × Fail

Large Text (above 18pt) WCAG AAA × Fail

Any Text WCAG AAA × Fail

# Black Background



## Color Contrast Check

Large Text (above 18pt) WCAG AA ✓ Pass

Any Text WCAG AA ✓ Pass

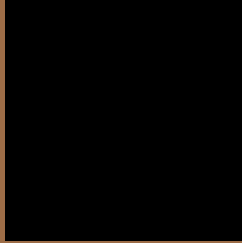
Large Text (above 18pt) WCAG AAA ✓ Pass

Any Text WCAG AAA × Fail

If you want to check with other color combinations, try the [Color Contrast Checker](#).



## Hex 9D6D47 Background



This preview shows how black text looks on a background with the Hex color 9D6D47.



This preview shows how white text looks on a background with the Hex color 9D6D47.

# Color Blindness Simulation

Color vision deficiency is a very complex topic, and I could not describe the different causes any better than Wikipedia does, so if you want to learn more, you should check out their [article about color blindness](#).

## Dichromacy



**Original Color**  
9D6D47

**Protanopia**  
83784B

**Deuteranopia**  
927246



**Tritanopia**  
A06870

# Trichromacy



**Original Color**  
9D6D47

**Protanomaly**  
8C744A

**Deuteranomaly**  
967046

**Tritanomaly**  
9F6A61

# Monochromacy



**Original Color**  
9D6D47

**Achromatopsia**  
777777

**Achromatomaly**  
857366

# CSS Examples

## Text

The CSS property to change the color of the text to Hex 9D6D47 is called "color". The color property can be set on classes, ids or directly on the HTML element.

This example shows how text in the color #9D6D47 looks like.

```
.text, #text, p{  
    color:#9D6D47  
}
```

If you want to add a text shadow in that color use the text-shadow property, you can generate a text shadow directly with our [CSS Text Shadow Generator](#).

Here you see how black text with a 4 pixel #9D6D47 colored shadow looks like.

```
.shadow{ text-shadow: 4px 4px 2px #9D6D47
}
```

## Border

The CSS property to change the border of an element to Hex 9D6D47 is called "border". The border property can be set on classes, ids or directly on the HTML element.

This example shows the color as border, it can be applied via the CSS property "border" or "border-color".

```
.border, #border, table{ border:4px solid
#9D6D47 }
```

If only the border color should be changed use the property `border-color`.

```
.border{ border-color:#9D6D47 }
```

If you want to add a box shadow in that color use:

Here you see how a box with a 4 pixel #9D6D47 colored shadow looks like.

```
.boxshadow{ -moz-box-shadow:4px 4px 4px  
4px #9D6D47; -webkit-box-shadow:4px 4px  
4px 4px #9D6D47; box-shadow:4px 4px 4px  
4px #9D6D47 }
```

# Background

The CSS property to change the background color of an element to Hex 9D6D47 is called "background". The background property can be set on classes, ids or directly on the HTML element.

```
.background, #background, body{  
background:#9D6D47 }
```

If only the background color should be changed can be used:

```
.background{ background-color:#9D6D47 }
```

This example shows the color as background, it is applied via the CSS property "background".

To optimize and compress your CSS code, you can use our [online CSS compressor and optimizer](#) based on csstidy. If you want to create a linear or radial gradient as background or border, check our [CSS Gradient Generator](#).



Hey! You found this booklet interesting? Support Converting Colors with the new Membership Option!

The pro membership hides all ads, plus gives you double the colors in the color bucket, and more awesome pro features!

**[Learn more, Memberships starting at \\$2.50/m!](#)**

**Follow me  
on Twitter!**

@ConvertingColor