

# Converting Colors

Hex(9D7154)

Have a look what the booklet for  
Hex(9D7154) contains.

<b>Hex(9D7154)</b> .....	3
<b><i>Conversions</i></b> .....	4
<b><i>Details</i></b> .....	6
<b><i>Harmonies</i></b> .....	11
<b><i>Previews</i></b> .....	23
<b><i>Color Blindness Simulation</i></b> .....	26
<b><i>CSS Examples</i></b> .....	29

**Color**

**Hex(9D7154)**

# Conversions

## Conversions Part 1

<b>Format</b>	<b>Color</b>
Hex	9D7154
RGB	157, 113, 84
RGB Percent	62%, 44%, 33%
CMY	0.3843, 0.5569, 0.6706
CMYK	0.00, 0.28, 0.46, 0.38
HSL	24°, 30%, 47%
HSV	24°, 46%, 62%
XYZ	21.4100, 19.6184, 11.0458
YIQ	122.8500, 35.5330, 0.3090

# Conversions

## Conversions Part 2

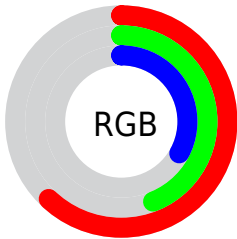
<b>Format</b>	<b>Color</b>
<b>RYB</b>	157, 132, 84
Decimal	10318164
CIELab	51.40, 13.70, 22.93
CIElCh	51, 26.713, 59.157
Yxy	19.6184, 0.4111, 0.3767
Android (android.graphics.Color)	4288508244 (0xFF9D7154)
YUV	122.8500, -19.1530, 29.9496
Hunter-Lab	44.2927, 8.7702, 16.2190

# Details

The Hex color **9D7154** is a dark color, and the websafe version is hex **996633**. A complement of this color would be **54809D**, and the grayscale version is **7B7B7B**.

A 20% lighter version of the original color is **D5A586**, and **674126** is the 20% darker color. If you saturate the color by 10%, you get **9D6844**, and if you desaturate by 10%, it is **9D7A64**.

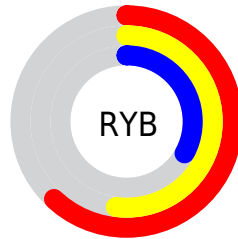
# Distribution



Red (62%)

Green (44%)

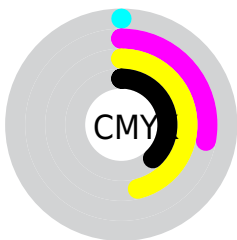
Blue (33%)



Red (62%)

Yellow (52%)

Blue (33%)

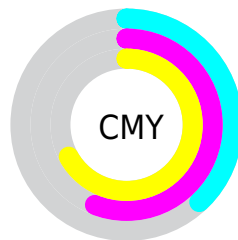


Cyan (0%)

Magenta (28%)

Yellow (46%)

Black (38%)



Cyan (38%)

Magenta (56%)

Yellow (67%)

# Brightness & Saturation Gradients

These gradients show how the Hex color 9D7154 changes by changing the brightness by 10 percent. The first figure shows a shift by +10% for each color and the second figure -10%.

Similar to the brightness gradients but the following saturation gradients show a change of the Hex color 9D7154 by changing the saturation by 10% instead.



 9D7154

 9D7154

FFFFFF

 82583D

 D5A586

 674126

 F2C0A0

 4E2B11

 FFDCBB

 351600

 FFF8D7

 1E0000

 FFFFF4

 000000

 9D7154

 9D7154

 9D6844

 9D7A64

 9D5E35

 9D8473

 9D5525

 9D8D83

 9D4B15

 9D9793

 9D4205

 9DA0A3

 9D3E00

 9DAAB2

 9DB3C2

 9DBDD2

 9DC6E1

# Harmonies

## Analogous

The Analogous color harmony consists of three colors that are next to each other on the color wheel.



A76B65



9D7154



8B794D

# Triad

The Triadic color harmony groups three colors that are evenly spaced from another and form a triangle on the color wheel.



9D7154



3C8779



7C75A2

# Complementary

The Complementary color scheme is a pair of colors which are on the opposite of each other on the color wheel.



9D7154



54809D

# Split Complementary

Split-complementary colors differ from the complementary color scheme. The scheme consists of three colors, the original color and two neighbors of the complement color.



5A7DA8



9D7154



298690

# Square

The Square scheme is like the rectangle color scheme, but the four colors are evenly spaced on the color wheel.



9D7154



588562



3783A1



976D92

# Rectangle

The Rectangle color scheme consists of four colors that form a rectangle on the color wheel.



9D7154



7B7E4F



3783A1



7278A5



# Sweetspot

The Sweet Spot groups the original color and five complimentary colors.



9D7154



CCBBAF



9D5481



665C55



E6E6E6



666666



# Same Dimension

The Same Dimension uses a secret algorithm to generate beautiful new colors.



9D7154



CC875A



9D9454



4F4A47



8F3900



0F0600



# Inverse Universe

The Inverse Universe completely reimagines the original color for something new.



54809D



5A9FCC



545D9D



474C4F



00568F

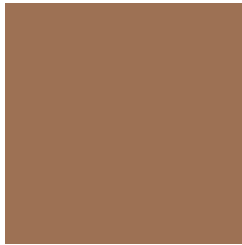


00090F



# Previews

## White Background



This preview shows how the Hex color 9D7154 looks on a white background.

## Color Contrast Check

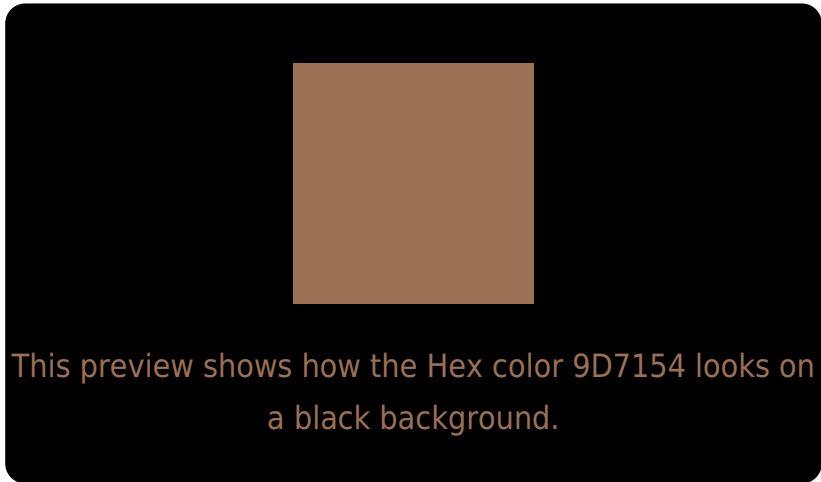
Large Text (above 18pt) WCAG AA ✓ Pass

Any Text WCAG AA × Fail

Large Text (above 18pt) WCAG AAA × Fail

Any Text WCAG AAA × Fail

# Black Background



## Color Contrast Check

Large Text (above 18pt) WCAG AA ✓ Pass

Any Text WCAG AA ✓ Pass

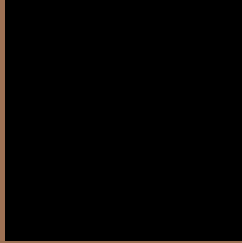
Large Text (above 18pt) WCAG AAA ✓ Pass

Any Text WCAG AAA × Fail

If you want to check with other color combinations, try the [Color Contrast Checker](#).



## Hex 9D7154 Background



This preview shows how black text looks on a background with the Hex color 9D7154.



This preview shows how white text looks on a background with the Hex color 9D7154.

# Color Blindness Simulation

Color vision deficiency is a very complex topic, and I could not describe the different causes any better than Wikipedia does, so if you want to learn more, you should check out their [article about color blindness](#).


## Dichromacy



**Original Color**  
9D7154

**Protanopia**  
847B58

**Deuteranopia**  
937553



**Tritanopia**  
A06D75

# Trichromacy



**Original Color**  
9D7154

**Protanomaly**  
8D7757

**Deuteranomaly**  
977453

**Tritanomaly**  
9F6E69

# Monochromacy



**Original Color**  
9D7154

**Achromatopsia**  
7B7B7B

**Achromatomaly**  
87776D

# CSS Examples

## Text

The CSS property to change the color of the text to Hex 9D7154 is called "color". The color property can be set on classes, ids or directly on the HTML element.

This example shows how text in the color #9D7154 looks like.

```
.text, #text, p{  
    color:#9D7154  
}
```

If you want to add a text shadow in that color use the text-shadow property, you can generate a text shadow directly with our [CSS Text Shadow Generator](#).

Here you see how black text with a 4 pixel #9D7154 colored shadow looks like.

```
.shadow{ text-shadow: 4px 4px 2px #9D7154
}
```

## Border

The CSS property to change the border of an element to Hex 9D7154 is called "border". The border property can be set on classes, ids or directly on the HTML element.

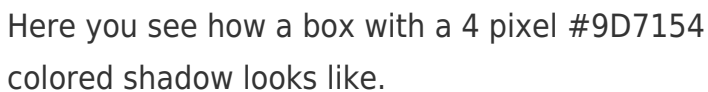
This example shows the color as border, it can be applied via the CSS property "border" or "border-color".

```
.border, #border, table{ border:4px solid
#9D7154 }
```

If only the border color should be changed use the property `border-color`.

```
.border{ border-color:#9D7154 }
```

If you want to add a box shadow in that color use:



Here you see how a box with a 4 pixel #9D7154 colored shadow looks like.

```
.boxshadow{ -moz-box-shadow:4px 4px 4px  
4px #9D7154; -webkit-box-shadow:4px 4px  
4px 4px #9D7154; box-shadow:4px 4px 4px  
4px #9D7154 }
```

# Background

The CSS property to change the background color of an element to Hex 9D7154 is called "background". The background property can be set on classes, ids or directly on the HTML element.

```
.background, #background, body{  
background:#9D7154 }
```

If only the background color should be changed can be used:

```
.background{ background-color:#9D7154 }
```

This example shows the color as background, it is applied via the CSS property "background".

To optimize and compress your CSS code, you can use our [online CSS compressor and optimizer](#) based on csstidy. If you want to create a linear or radial gradient as background or border, check our [CSS Gradient Generator](#).



Hey! You found this booklet interesting? Support Converting Colors with the new Membership Option!

The pro membership hides all ads, plus gives you double the colors in the color bucket, and more awesome pro features!

**[Learn more, Memberships starting at \\$2.50/m!](#)**

**Follow me  
on Twitter!**

@ConvertingColor