

# Converting Colors

Hex(9D795D)

Have a look what the booklet for  
Hex(9D795D) contains.

<b>Hex(9D795D)</b> .....	3
<b><i>Conversions</i></b> .....	4
<b><i>Details</i></b> .....	6
<b><i>Harmonies</i></b> .....	11
<b><i>Previews</i></b> .....	23
<b><i>Color Blindness Simulation</i></b> .....	26
<b><i>CSS Examples</i></b> .....	29

**Color**

**Hex(9D795D)**

# Conversions

## Conversions Part 1

<b>Format</b>	<b>Color</b>
Hex	9D795D
RGB	157, 121, 93
RGB Percent	62%, 47%, 36%
CMY	0.3843, 0.5255, 0.6353
CMYK	0.00, 0.23, 0.41, 0.38
HSL	26°, 26%, 49%
HSV	26°, 41%, 62%
XYZ	22.7178, 21.6332, 13.3342
YIQ	128.5720, 30.4440, -1.0760

# Conversions

## Conversions Part 2

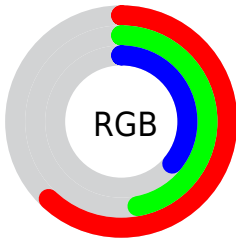
<b>Format</b>	<b>Color</b>
<b>RYB</b>	157, 143, 93
Decimal	10320221
CIELab	53.64, 10.14, 20.74
CIElCh	54, 23.090, 63.938
Yxy	21.6332, 0.3938, 0.3750
Android (android.graphics.Color)	4288510301 (0xFF9D795D)
YUV	128.5720, -17.5370, 24.9314
Hunter-Lab	46.5115, 5.7904, 15.5604

# Details

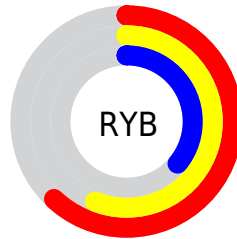
The Hex color **9D795D** is a dark color, and the websafe version is hex **996666**. A complement of this color would be **5D819D**, and the grayscale version is **818181**.

A 20% lighter version of the original color is **D5AD90**, and **68482F** is the 20% darker color. If you saturate the color by 10%, you get **9D704D**, and if you desaturate by 10%, it is **9D826D**.

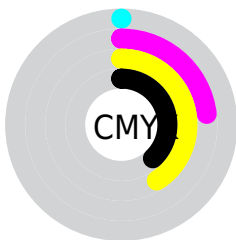
# Distribution



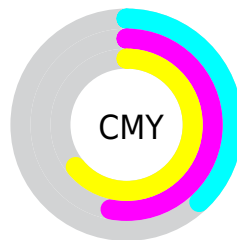
- Red (62%)
- Green (47%)
- Blue (36%)



- Red (62%)
- Yellow (56%)
- Blue (36%)



- Cyan (0%)
- Magenta (23%)
- Yellow (41%)
- Black (38%)



- Cyan (38%)
- Magenta (53%)
- Yellow (64%)

# Brightness & Saturation Gradients

These gradients show how the Hex color 9D795D changes by changing the brightness by 10 percent. The first figure shows a shift by +10% for each color and the second figure -10%.

Similar to the brightness gradients but the following saturation gradients show a change of the Hex color 9D795D by changing the saturation by 10% instead.





9D795D



9D795D

FFFFFF



826045



D5AD90



68482F



F2C9AA



4F3219



FFE5C5



371D00



FFFFE1



200500

FFFFFFE



000000



9D795D



9D795D



9D704D



9D826D



9D673E



9D8B7C

 9D5F2E

 9D938C

 9D561E

 9D9C9C

 9D4D0E

 9DA5AB

 9D4500

 9DAEBB

 9DB7CB

 9DC0DB

 9DC8EA

# Harmonies

## Analogous

The Analogous color harmony consists of three colors that are next to each other on the color wheel.



A7736B



9D795D



8C8058

# Triad

The Triadic color harmony groups three colors that are evenly spaced from another and form a triangle on the color wheel.



9D795D



4B8B82



867AA1

# Complementary

The Complementary color scheme is a pair of colors which are on the opposite of each other on the color wheel.



9D795D



5D819D

# Split Complementary

Split-complementary colors differ from the complementary color scheme. The scheme consists of three colors, the original color and two neighbors of the complement color.



6A81A8



9D795D



428A96

# Square

The Square scheme is like the rectangle color scheme, but the four colors are evenly spaced on the color wheel.



9D795D



5F8A6E



4F87A3



9C7492

# Rectangle

The Rectangle color scheme consists of four colors that form a rectangle on the color wheel.



9D795D



7E845B



4F87A3



7E7CA4



# Sweetspot

The Sweet Spot groups the original color and five complimentary colors.



9D795D



CCBEB4



9D5D81



665E58



E6E6E6



666666



# Same Dimension

The Same Dimension uses a secret algorithm to generate beautiful new colors.



9D795D



CC9468



9D995D



4F4B47



8F3E00



0F0700



# Inverse Universe

The Inverse Universe completely reimagines the original color for something new.



5D819D



68A0CC



5D619D



474C4F



00508F

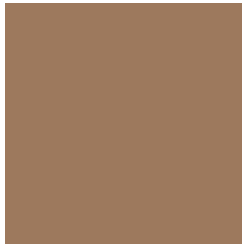


00090F



# Previews

## White Background



This preview shows how the Hex color 9D795D looks on a white background.

## Color Contrast Check

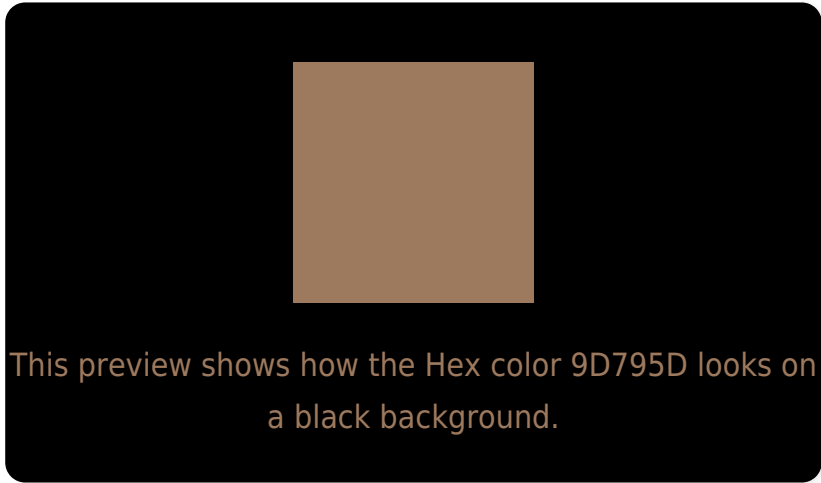
Large Text (above 18pt) WCAG AA ✓ Pass

Any Text WCAG AA × Fail

Large Text (above 18pt) WCAG AAA × Fail

Any Text WCAG AAA × Fail

# Black Background



## Color Contrast Check

Large Text (above 18pt) WCAG AA ✓ Pass

Any Text WCAG AA ✓ Pass

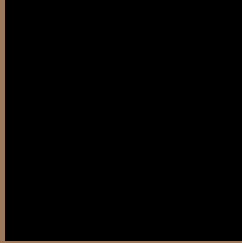
Large Text (above 18pt) WCAG AAA ✓ Pass

Any Text WCAG AAA × Fail

If you want to check with other color combinations, try the [Color Contrast Checker](#).



## Hex 9D795D Background



This preview shows how black text looks on a background with the Hex color 9D795D.



This preview shows how white text looks on a background with the Hex color 9D795D.

# Color Blindness Simulation

Color vision deficiency is a very complex topic, and I could not describe the different causes any better than Wikipedia does, so if you want to learn more, you should check out their [article about color blindness](#).

## Dichromacy



**Original Color**  
9D795D

**Protanopia**  
8A8060

**Deuteranopia**  
987B5D



**Tritanopia**  
A0757E

# Trichromacy



**Original Color**  
9D795D

**Protanomaly**  
917D5F

**Deuteranomaly**  
9A7A5D

**Tritanomaly**  
9F7672

# Monochromacy



**Original Color**  
9D795D

**Achromatopsia**  
818181

**Achromatomaly**  
8B7E74

# CSS Examples

## Text

The CSS property to change the color of the text to Hex 9D795D is called "color". The color property can be set on classes, ids or directly on the HTML element.

This example shows how text in the color #9D795D looks like.

```
.text, #text, p{  
    color:#9D795D  
}
```

If you want to add a text shadow in that color use the text-shadow property, you can generate a text shadow directly with our [CSS Text Shadow Generator](#).

Here you see how black text with a 4 pixel #9D795D colored shadow looks like.

```
.shadow{ text-shadow: 4px 4px 2px #9D795D
}
```

## Border

The CSS property to change the border of an element to Hex 9D795D is called "border". The border property can be set on classes, ids or directly on the HTML element.

This example shows the color as border, it can be applied via the CSS property "border" or "border-color".

```
.border, #border, table{ border:4px solid
#9D795D }
```

If only the border color should be changed use the property `border-color`.

```
.border{ border-color:#9D795D }
```

If you want to add a box shadow in that color use:

Here you see how a box with a 4 pixel #9D795D colored shadow looks like.

```
.boxshadow{ -moz-box-shadow:4px 4px 4px  
4px #9D795D; -webkit-box-shadow:4px 4px  
4px 4px #9D795D; box-shadow:4px 4px 4px  
4px #9D795D }
```

# Background

The CSS property to change the background color of an element to Hex 9D795D is called "background". The background property can be set on classes, ids or directly on the HTML element.

```
.background, #background, body{  
background:#9D795D }
```

If only the background color should be changed can be used:

```
.background{ background-color:#9D795D }
```

This example shows the color as background, it is applied via the CSS property "background".

To optimize and compress your CSS code, you can use our [online CSS compressor and optimizer](#) based on csstidy. If you want to create a linear or radial gradient as background or border, check our [CSS Gradient Generator](#).



Hey! You found this booklet interesting? Support Converting Colors with the new Membership Option!

The pro membership hides all ads, plus gives you double the colors in the color bucket, and more awesome pro features!

**[Learn more, Memberships starting at \\$2.50/m!](#)**

**Follow me  
on Twitter!**

@ConvertingColor