

# Converting Colors

Hex(9D7A61)

Have a look what the booklet for  
Hex(9D7A61) contains.

<b>Hex(9D7A61)</b> .....	3
<b><i>Conversions</i></b> .....	4
<b><i>Details</i></b> .....	6
<b><i>Harmonies</i></b> .....	11
<b><i>Previews</i></b> .....	23
<b><i>Color Blindness Simulation</i></b> .....	26
<b><i>CSS Examples</i></b> .....	29

**Color**

**Hex(9D7A61)**

# Conversions

## Conversions Part 1

<b>Format</b>	<b>Color</b>
Hex	9D7A61
RGB	157, 122, 97
RGB Percent	62%, 48%, 38%
CMY	0.3843, 0.5216, 0.6196
CMYK	0.00, 0.22, 0.38, 0.38
HSL	25°, 24%, 50%
HSV	25°, 38%, 62%
XYZ	23.0218, 21.9502, 14.3327
YIQ	129.6150, 28.8850, -0.3550

# Conversions

## Conversions Part 2

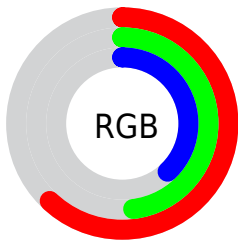
<b>Format</b>	<b>Color</b>
<b>RYB</b>	157, 140, 97
Decimal	10320481
CIELab	53.97, 10.06, 18.91
CIElCh	54, 21.418, 61.974
Yxy	21.9502, 0.3882, 0.3701
Android (android.graphics.Color)	4288510561 (0xFF9D7A61)
YUV	129.6150, -16.0792, 24.0166
Hunter-Lab	46.8511, 5.7225, 14.6577

# Details

The Hex color **9D7A61** is a dark color, and the websafe version is hex **996666**. A complement of this color would be **61849D**, and the grayscale version is **828282**.

A 20% lighter version of the original color is **D5AE94**, and **684932** is the 20% darker color. If you saturate the color by 10%, you get **9D7151**, and if you desaturate by 10%, it is **9D8371**.

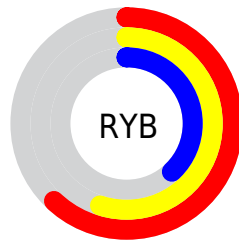
# Distribution



Red (62%)

Green (48%)

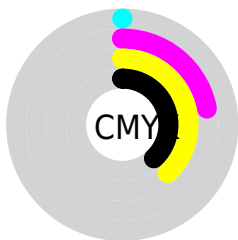
Blue (38%)



Red (62%)

Yellow (55%)

Blue (38%)

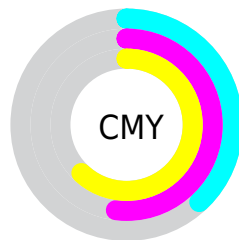


Cyan (0%)

Magenta (22%)

Yellow (38%)

Black (38%)



Cyan (38%)

Magenta (52%)

Yellow (62%)

# Brightness & Saturation Gradients

These gradients show how the Hex color 9D7A61 changes by changing the brightness by 10 percent. The first figure shows a shift by +10% for each color and the second figure -10%.

Similar to the brightness gradients but the following saturation gradients show a change of the Hex color 9D7A61 by changing the saturation by 10% instead.



 9D7A61

 9D7A61

FFFFFF

 826149

 D5AE94

 684932

 F2CAAE

 4F331D

 FFE6CA

 371D05

 FFFFE6

 200600

 000000

 9D7A61

 9D7A61

 9D7151

 9D8371

 9D6842

 9D8C80

 9D5F32

 9D9590

 9D5522

 9D9FA0

 9D4C12

 9DA8B0

 9D4303

 9DB1BF

 9D4100

 9DBACF

 9DC3DF

 9DCCEE

# Harmonies

## Analogous

The Analogous color harmony consists of three colors that are next to each other on the color wheel.



A6756E



9D7A61



8D805C

# Triad

The Triadic color harmony groups three colors that are evenly spaced from another and form a triangle on the color wheel.



9D7A61



528B82



857CA0

# Complementary

The Complementary color scheme is a pair of colors which are on the opposite of each other on the color wheel.



9D7A61



61849D

# Split Complementary

Split-complementary colors differ from the complementary color scheme. The scheme consists of three colors, the original color and two neighbors of the complement color.



6C82A6



9D7A61



4A8B94

# Square

The Square scheme is like the rectangle color scheme, but the four colors are evenly spaced on the color wheel.



9D7A61



648A6F



5488A1



9A7693

# Rectangle

The Rectangle color scheme consists of four colors that form a rectangle on the color wheel.



9D7A61



80845F



5488A1



7D7EA3



# Sweetspot

The Sweet Spot groups the original color and five complimentary colors.



9D7A61



CCBFB6



9D6184



665E59



E6E6E6



666666



# Same Dimension

The Same Dimension uses a secret algorithm to generate beautiful new colors.



9D7A61



CC956E



9D9861



4F4A47



8F3C00



0F0600



# Inverse Universe

The Inverse Universe completely reimagines the original color for something new.



61849D



6EA5CC



61669D



474C4F



00538F

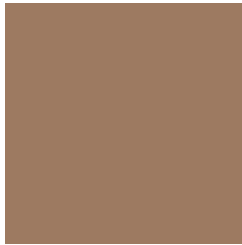


00090F



# Previews

## White Background



This preview shows how the Hex color 9D7A61 looks on a white background.

## Color Contrast Check

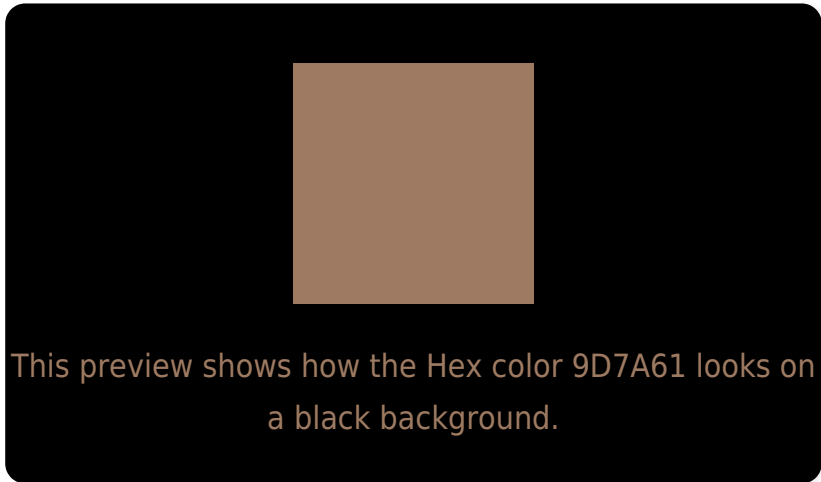
Large Text (above 18pt) WCAG AA ✓ Pass

Any Text WCAG AA ✗ Fail

Large Text (above 18pt) WCAG AAA ✗ Fail

Any Text WCAG AAA ✗ Fail

# Black Background



## Color Contrast Check

Large Text (above 18pt) WCAG AA ✓ Pass

Any Text WCAG AA ✓ Pass

Large Text (above 18pt) WCAG AAA ✓ Pass

Any Text WCAG AAA × Fail

If you want to check with other color combinations, try the [Color Contrast Checker](#).



## Hex 9D7A61 Background



This preview shows how black text looks on a background with the Hex color 9D7A61.



This preview shows how white text looks on a background with the Hex color 9D7A61.

# Color Blindness Simulation

Color vision deficiency is a very complex topic, and I could not describe the different causes any better than Wikipedia does, so if you want to learn more, you should check out their [article about color blindness](#).


## Dichromacy



**Original Color**  
9D7A61

**Protanopia**  
8A8164

**Deuteranopia**  
987C61



**Tritanopia**  
A0767F

# Trichromacy



**Original Color**  
9D7A61

**Protanomaly**  
917E63

**Deuteranomaly**  
9A7B61

**Tritanomaly**  
9F7774

# Monochromacy



**Original Color**  
9D7A61

**Achromatopsia**  
828282

**Achromatomaly**  
8C7F76

# CSS Examples

## Text

The CSS property to change the color of the text to Hex 9D7A61 is called "color". The color property can be set on classes, ids or directly on the HTML element.

This example shows how text in the color #9D7A61 looks like.

```
.text, #text, p{  
    color:#9D7A61  
}
```

If you want to add a text shadow in that color use the text-shadow property, you can generate a text shadow directly with our [CSS Text Shadow Generator](#).

Here you see how black text with a 4 pixel #9D7A61 colored shadow looks like.

```
.shadow{ text-shadow: 4px 4px 2px #9D7A61
}
```

## Border

The CSS property to change the border of an element to Hex 9D7A61 is called "border". The border property can be set on classes, ids or directly on the HTML element.

This example shows the color as border, it can be applied via the CSS property "border" or "border-color".

```
.border, #border, table{ border:4px solid
#9D7A61 }
```

If only the border color should be changed use the property `border-color`.

```
.border{ border-color:#9D7A61 }
```

If you want to add a box shadow in that color use:

Here you see how a box with a 4 pixel #9D7A61 colored shadow looks like.

```
.boxshadow{ -moz-box-shadow:4px 4px 4px  
4px #9D7A61; -webkit-box-shadow:4px 4px  
4px 4px #9D7A61; box-shadow:4px 4px 4px  
4px #9D7A61 }
```

# Background

The CSS property to change the background color of an element to Hex 9D7A61 is called "background". The background property can be set on classes, ids or directly on the HTML element.

```
.background, #background, body{  
background:#9D7A61 }
```

If only the background color should be changed can be used:

```
.background{ background-color:#9D7A61 }
```

This example shows the color as background, it is applied via the CSS property "background".

To optimize and compress your CSS code, you can use our [online CSS compressor and optimizer](#) based on csstidy. If you want to create a linear or radial gradient as background or border, check our [CSS Gradient Generator](#).



Hey! You found this booklet interesting? Support Converting Colors with the new Membership Option!

The pro membership hides all ads, plus gives you double the colors in the color bucket, and more awesome pro features!

**[Learn more, Memberships starting at \\$2.50/m!](#)**

**Follow me  
on Twitter!**

@ConvertingColor