

# Converting Colors

Hex(9D7C65)

Have a look what the booklet for  
Hex(9D7C65) contains.

<b>Hex(9D7C65)</b> .....	3
<b><i>Conversions</i></b> .....	4
<b><i>Details</i></b> .....	6
<b><i>Harmonies</i></b> .....	11
<b><i>Previews</i></b> .....	23
<b><i>Color Blindness Simulation</i></b> .....	26
<b><i>CSS Examples</i></b> .....	29

**Color**

**Hex(9D7C65)**

# Conversions

## Conversions Part 1

<b>Format</b>	<b>Color</b>
Hex	9D7C65
RGB	157, 124, 101
RGB Percent	62%, 49%, 40%
CMY	0.3843, 0.5137, 0.6039
CMYK	0.00, 0.21, 0.36, 0.38
HSL	25°, 22%, 51%
HSV	25°, 36%, 62%
XYZ	23.4612, 22.5230, 15.4227
YIQ	131.2450, 27.0510, -0.1570

# Conversions

## Conversions Part 2

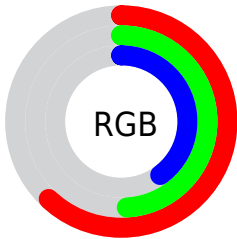
<b>Format</b>	<b>Color</b>
<b>R<sub>YB</sub></b>	157, 140, 101
Decimal	10320997
CIE <sub>Lab</sub>	54.58, 9.43, 17.43
CIE <sub>LCh</sub>	55, 19.819, 61.578
Yxy	22.5230, 0.3821, 0.3668
Android (android.graphics.Color)	4288511077 (0xFF9D7C65)
YUV	131.2450, -14.9108, 22.5871
Hunter-Lab	47.4584, 5.1900, 13.9532

# Details

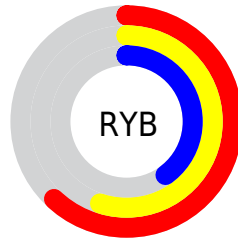
The Hex color **9D7C65** is a dark color, and the websafe version is hex **996666**. A complement of this color would be **65869D**, and the grayscale version is **838383**.

A 20% lighter version of the original color is **D5B198**, and **684B36** is the 20% darker color. If you saturate the color by 10%, you get **9D7355**, and if you desaturate by 10%, it is **9D8575**.

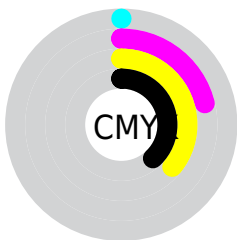
# Distribution



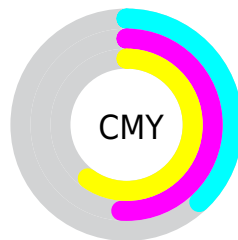
- Red (62%)
- Green (49%)
- Blue (40%)



- Red (62%)
- Yellow (55%)
- Blue (40%)



- Cyan (0%)
- Magenta (21%)
- Yellow (36%)
- Black (38%)



- Cyan (38%)
- Magenta (51%)
- Yellow (60%)

# Brightness & Saturation Gradients

These gradients show how the Hex color 9D7C65 changes by changing the brightness by 10 percent. The first figure shows a shift by +10% for each color and the second figure -10%.

Similar to the brightness gradients but the following saturation gradients show a change of the Hex color 9D7C65 by changing the saturation by 10% instead.



 9D7C65

 9D7C65

FFFFFF

 82634D

 D5B198

 684B36

 F1CCB3

 4F3420

 FFE8CE

 371F0A

 FFFFEB

 210900

 000000

 9D7C65

 9D7C65

 9D7355

 9D8575

 9D6946

 9D8F84

 9D6036

 9D9894

 9D5726

 9DA1A4

 9D4E16

 9DAAB3

 9D4407

 9DB4C3

 9D4000

 9DBDD3

 9DC6E3

 9DCFF2

# Harmonies

## Analogous

The Analogous color harmony consists of three colors that are next to each other on the color wheel.



A57871



9D7C65



8E8260

# Triad

The Triadic color harmony groups three colors that are evenly spaced from another and form a triangle on the color wheel.



9D7C65



588C83



877EA0

# Complementary

The Complementary color scheme is a pair of colors which are on the opposite of each other on the color wheel.



9D7C65



65869D

# Split Complementary

Split-complementary colors differ from the complementary color scheme. The scheme consists of three colors, the original color and two neighbors of the complement color.



6F84A4



9D7C65



518C94

# Square

The Square scheme is like the rectangle color scheme, but the four colors are evenly spaced on the color wheel.



9D7C65



688B72



5A89A0



997993

# Rectangle

The Rectangle color scheme consists of four colors that form a rectangle on the color wheel.



9D7C65



828563



5A89A0



7F80A2



# Sweetspot

The Sweet Spot groups the original color and five complimentary colors.



9D7C65



CCBFB6



9D6587



665E59



E6E6E6



666666



# Same Dimension

The Same Dimension uses a secret algorithm to generate beautiful new colors.



9D7C65



CC9874



9D9765



4F4A47



8F3B00



0F0600



# Inverse Universe

The Inverse Universe completely reimagines the original color for something new.



65869D



74A8CC



656B9D



474C4F



00548F

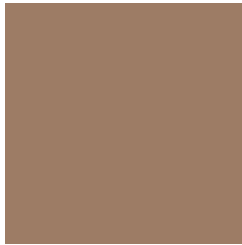


00090F



# Previews

## White Background



This preview shows how the Hex color 9D7C65 looks on a white background.

## Color Contrast Check

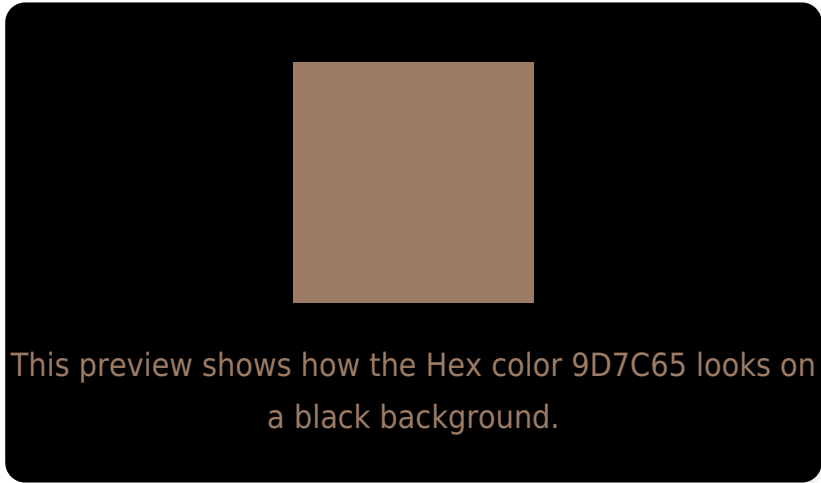
Large Text (above 18pt) WCAG AA ✓ Pass

Any Text WCAG AA × Fail

Large Text (above 18pt) WCAG AAA × Fail

Any Text WCAG AAA × Fail

# Black Background



## Color Contrast Check

Large Text (above 18pt) WCAG AA ✓ Pass

Any Text WCAG AA ✓ Pass

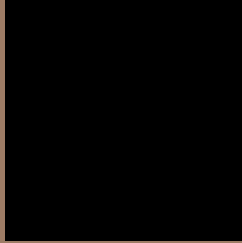
Large Text (above 18pt) WCAG AAA ✓ Pass

Any Text WCAG AAA × Fail

If you want to check with other color combinations, try the [Color Contrast Checker](#).



## Hex 9D7C65 Background



This preview shows how black text looks on a background with the Hex color 9D7C65.



This preview shows how white text looks on a background with the Hex color 9D7C65.

# Color Blindness Simulation

Color vision deficiency is a very complex topic, and I could not describe the different causes any better than Wikipedia does, so if you want to learn more, you should check out their [article about color blindness](#).

## Dichromacy



**Original Color**  
9D7C65

**Protanopia**  
8B8368

**Deuteranopia**  
997D65



**Tritanopia**  
A07881

# Trichromacy



**Original Color**  
9D7C65

**Protanomaly**  
928067

**Deuteranomaly**  
9A7D65

**Tritanomaly**  
9F7977

# Monochromacy



**Original Color**  
9D7C65

**Achromatopsia**  
838383

**Achromatomaly**  
8C8078

# CSS Examples

## Text

The CSS property to change the color of the text to Hex 9D7C65 is called "color". The color property can be set on classes, ids or directly on the HTML element.

This example shows how text in the color #9D7C65 looks like.

```
.text, #text, p{  
    color:#9D7C65  
}
```

If you want to add a text shadow in that color use the text-shadow property, you can generate a text shadow directly with our [CSS Text Shadow Generator](#).

Here you see how black text with a 4 pixel #9D7C65 colored shadow looks like.

```
.shadow{ text-shadow: 4px 4px 2px #9D7C65
}
```

## Border

The CSS property to change the border of an element to Hex 9D7C65 is called "border". The border property can be set on classes, ids or directly on the HTML element.

This example shows the color as border, it can be applied via the CSS property "border" or "border-color".

```
.border, #border, table{ border:4px solid
#9D7C65 }
```

If only the border color should be changed use the property `border-color`.

```
.border{ border-color:#9D7C65 }
```

If you want to add a box shadow in that color use:

Here you see how a box with a 4 pixel #9D7C65 colored shadow looks like.

```
.boxshadow{ -moz-box-shadow:4px 4px 4px  
4px #9D7C65; -webkit-box-shadow:4px 4px  
4px 4px #9D7C65; box-shadow:4px 4px 4px  
4px #9D7C65 }
```

# Background

The CSS property to change the background color of an element to Hex 9D7C65 is called "background". The background property can be set on classes, ids or directly on the HTML element.

```
.background, #background, body{  
background:#9D7C65 }
```

If only the background color should be changed can be used:

```
.background{ background-color:#9D7C65 }
```

This example shows the color as background, it is applied via the CSS property "background".

To optimize and compress your CSS code, you can use our [online CSS compressor and optimizer](#) based on csstidy. If you want to create a linear or radial gradient as background or border, check our [CSS Gradient Generator](#).



Hey! You found this booklet interesting? Support Converting Colors with the new Membership Option!

The pro membership hides all ads, plus gives you double the colors in the color bucket, and more awesome pro features!

**[Learn more, Memberships starting at \\$2.50/m!](#)**

**Follow me  
on Twitter!**

@ConvertingColor