

# Converting Colors

Hex(9F754B)

Have a look what the booklet for  
Hex(9F754B) contains.

<b>Hex(9F754B)</b> .....	3
<b><i>Conversions</i></b> .....	4
<b><i>Details</i></b> .....	6
<b><i>Harmonies</i></b> .....	11
<b><i>Previews</i></b> .....	23
<b><i>Color Blindness Simulation</i></b> .....	26
<b><i>CSS Examples</i></b> .....	29

**Color**

**Hex(9F754B)**

# Conversions

## Conversions Part 1

Format	Color
Hex	9F754B
RGB	159, 117, 75
RGB Percent	62%, 46%, 29%
CMY	0.3765, 0.5412, 0.7059
CMYK	0.00, 0.26, 0.53, 0.38
HSL	30°, 36%, 46%
HSV	30°, 53%, 62%
XYZ	21.9294, 20.6015, 9.4773
YIQ	124.7700, 38.5140, -4.1580

# Conversions

## Conversions Part 2

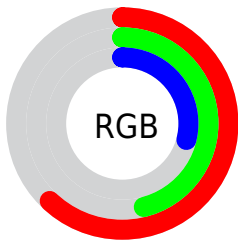
<b>Format</b>	<b>Color</b>
<b>RYB</b>	159, 159, 75
Decimal	10450251
CIELab	52.51, 11.36, 29.49
CIELCh	53, 31.600, 68.927
Yxy	20.6015, 0.4217, 0.3961
Android (android.graphics.Color)	4288640331 (0xFF9F754B)
YUV	124.7700, -24.5366, 30.0197
Hunter-Lab	45.3889, 6.8106, 19.3923

# Details

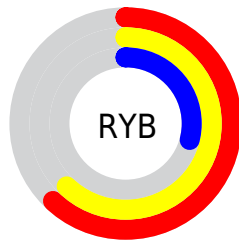
The Hex color **9F754B** is a dark color, and the websafe version is hex **996633**. A complement of this color would be **4B759F**, and the grayscale version is **7D7D7D**.

A 20% lighter version of the original color is **D8A97D**, and **69451D** is the 20% darker color. If you saturate the color by 10%, you get **9F6D3B**, and if you desaturate by 10%, it is **9F7D5B**.

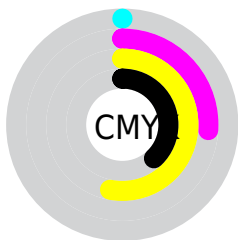
# Distribution



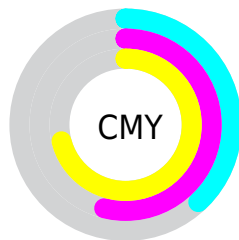
- Red (62%)
- Green (46%)
- Blue (29%)



- Red (62%)
- Yellow (62%)
- Blue (29%)



- Cyan (0%)
- Magenta (26%)
- Yellow (53%)
- Black (38%)



- Cyan (38%)
- Magenta (54%)
- Yellow (71%)

# Brightness & Saturation Gradients

These gradients show how the Hex color 9F754B changes by changing the brightness by 10 percent. The first figure shows a shift by +10% for each color and the second figure -10%.

Similar to the brightness gradients but the following saturation gradients show a change of the Hex color 9F754B by changing the saturation by 10% instead.



 9F754B

 9F754B

FFFFFF

 845C34

 D8A97D

 69451D

 F5C497

 4F2E06

 FFE0B2

 361A00

 FFFDCD

 1E0000

 FFFFEE

 000000

 9F754B

 9F754B

 9F6D3B

 9F7D5B

 9F652B

 9F856B

 9F5D1B

 9F8D7B

 9F550B

 9F958B

 9F4F00

 9F9D9B

 9FA5AA

 9FADBA

 9FB5CA

 9FBDDA

# Harmonies

## Analogous

The Analogous color harmony consists of three colors that are next to each other on the color wheel.



AE6C5D



9F754B



877E47

# Triad

The Triadic color harmony groups three colors that are evenly spaced from another and form a triangle on the color wheel.



9F754B



1B8C85



8B73A8

# Complementary

The Complementary color scheme is a pair of colors which are on the opposite of each other on the color wheel.



9F754B



4B759F

# Split Complementary

Split-complementary colors differ from the complementary color scheme. The scheme consists of three colors, the original color and two neighbors of the complement color.



637DB3



9F754B



008A9E

# Square

The Square scheme is like the rectangle color scheme, but the four colors are evenly spaced on the color wheel.



9F754B



478A69



3085AF



A66B91

# Rectangle

The Rectangle color scheme consists of four colors that form a rectangle on the color wheel.



9F754B



74844D



3085AF



7F77AD



# Sweetspot

The Sweet Spot groups the original color and five complimentary colors.



9F754B



CFBEAE



9F4B75



695F55



E8E8E8



696969



# Same Dimension

The Same Dimension uses a secret algorithm to generate beautiful new colors.



9F754B



CF8D4C



9F9E4B



4F4B47



8F4700



0F0800



# Inverse Universe

The Inverse Universe completely reimagines the original color for something new.



4B759F



4C8DCF



4B4B9F



474B4F



00478F

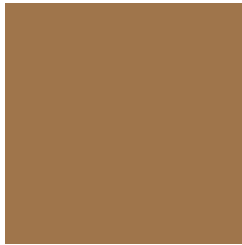


00080F



# Previews

## White Background



This preview shows how the Hex color 9F754B looks on a white background.

## Color Contrast Check

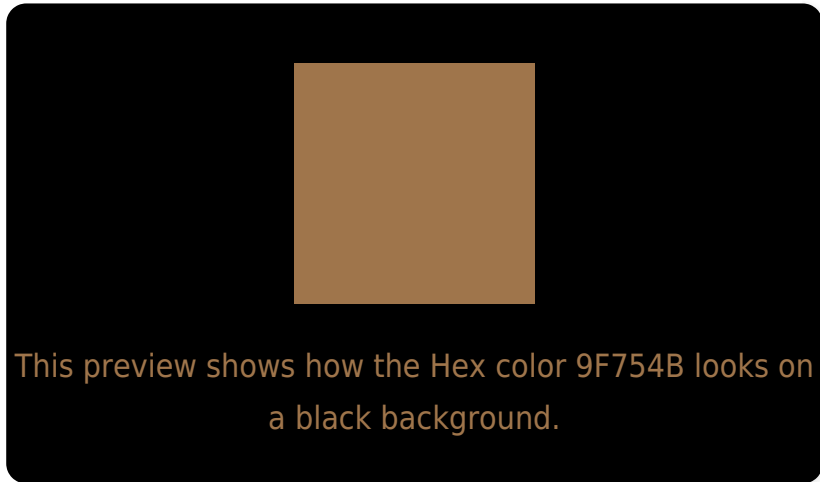
Large Text (above 18pt) WCAG AA ✓ Pass

Any Text WCAG AA × Fail

Large Text (above 18pt) WCAG AAA × Fail

Any Text WCAG AAA × Fail

# Black Background



## Color Contrast Check

Large Text (above 18pt) WCAG AA ✓ Pass

Any Text WCAG AA ✓ Pass

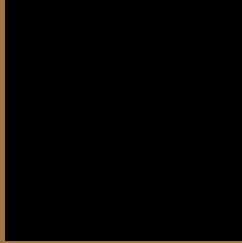
Large Text (above 18pt) WCAG AAA ✓ Pass

Any Text WCAG AAA × Fail

If you want to check with other color combinations, try the [Color Contrast Checker](#).



## Hex 9F754B Background



This preview shows how black text looks on a background with the Hex color 9F754B.



This preview shows how white text looks on a background with the Hex color 9F754B.

# Color Blindness Simulation

Color vision deficiency is a very complex topic, and I could not describe the different causes any better than Wikipedia does, so if you want to learn more, you should check out their [article about color blindness](#).

## Dichromacy



**Original Color**  
9F754B

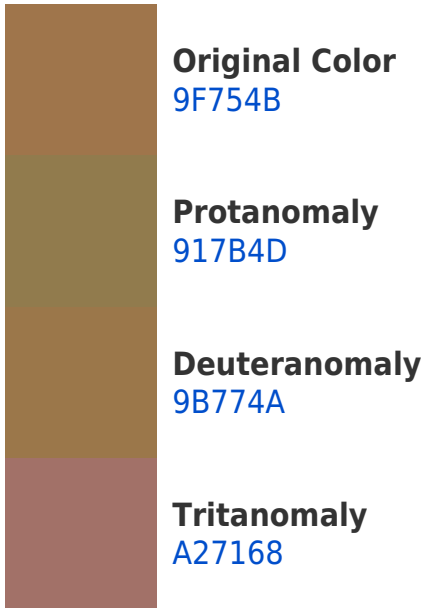
**Protanopia**  
897E4E

**Deuteranopia**  
99784A

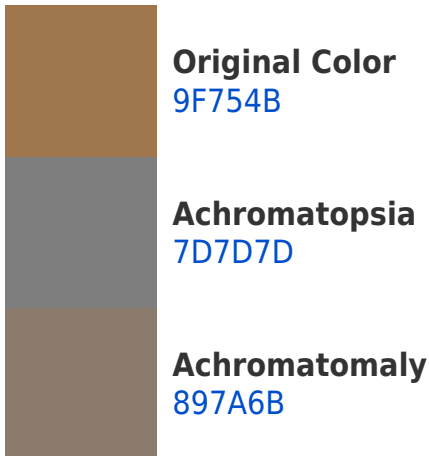


**Tritanopia**  
A36F78

# Trichromacy



# Monochromacy



# CSS Examples

## Text

The CSS property to change the color of the text to Hex 9F754B is called "color". The color property can be set on classes, ids or directly on the HTML element.

This example shows how text in the color #9F754B looks like.

```
.text, #text, p{  
    color:#9F754B  
}
```

If you want to add a text shadow in that color use the text-shadow property, you can generate a text shadow directly with our [CSS Text Shadow Generator](#).

Here you see how black text with a 4 pixel #9F754B colored shadow looks like.

```
.shadow{ text-shadow: 4px 4px 2px #9F754B
}
```

## Border

The CSS property to change the border of an element to Hex 9F754B is called "border". The border property can be set on classes, ids or directly on the HTML element.

This example shows the color as border, it can be applied via the CSS property "border" or "border-color".

```
.border, #border, table{ border:4px solid
#9F754B }
```

If only the border color should be changed use the property `border-color`.

```
.border{ border-color:#9F754B }
```

If you want to add a box shadow in that color use:

Here you see how a box with a 4 pixel #9F754B colored shadow looks like.

```
.boxshadow{ -moz-box-shadow:4px 4px 4px  
4px #9F754B; -webkit-box-shadow:4px 4px  
4px 4px #9F754B; box-shadow:4px 4px 4px  
4px #9F754B }
```

# Background

The CSS property to change the background color of an element to Hex 9F754B is called "background". The background property can be set on classes, ids or directly on the HTML element.

```
.background, #background, body{  
background:#9F754B }
```

If only the background color should be changed can be used:

```
.background{ background-color:#9F754B }
```

This example shows the color as background, it is applied via the CSS property "background".

To optimize and compress your CSS code, you can use our [online CSS compressor and optimizer](#) based on csstidy. If you want to create a linear or radial gradient as background or border, check our [CSS Gradient Generator](#).



Hey! You found this booklet interesting? Support Converting Colors with the new Membership Option!

The pro membership hides all ads, plus gives you double the colors in the color bucket, and more awesome pro features!

**[Learn more, Memberships starting at \\$2.50/m!](#)**

**Follow me  
on Twitter!**

@ConvertingColor