

Converting Colors

Hex(9F7957)

Have a look what the booklet for
Hex(9F7957) contains.

| | |
|--|----|
| Hex(9F7957) | 3 |
| <i>Conversions</i> | 4 |
| <i>Details</i> | 6 |
| <i>Harmonies</i> | 11 |
| <i>Previews</i> | 23 |
| <i>Color Blindness Simulation</i> | 26 |
| <i>CSS Examples</i> | 29 |

Color

Hex(9F7957)

Conversions

Conversions Part 1

| Format | Color |
|---------------|----------------------------|
| Hex | 9F7957 |
| RGB | 159, 121, 87 |
| RGB Percent | 62%, 47%, 34% |
| CMY | 0.3765, 0.5255, 0.6588 |
| CMYK | 0.00, 0.24, 0.45, 0.38 |
| HSL | 28°, 29%, 48% |
| HSV | 28°, 45%, 62% |
| XYZ | 22.8557, 21.7338, 12.0072 |
| YIQ | 128.4860, 33.5620, -2.5180 |

Conversions

Conversions Part 2

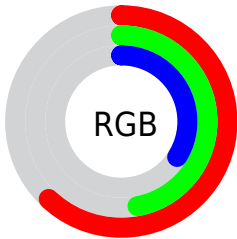
| Format | Color |
|-------------------------------------|--------------------------------|
| R_{YB} | 159, 151, 87 |
| Decimal | 10451287 |
| CIE _{Lab} | 53.74, 10.31, 24.34 |
| CIE _{LCh} | 54, 26.431, 67.048 |
| Yxy | 21.7338, 0.4038, 0.3840 |
| Android (android.graphics.Color) | 4288641367 (0xFF9F7957) |
| YUV | 128.4860, -20.4526, 26.7608 |
| Hunter-Lab | 46.6195, 5.9275, 17.3630 |

Details

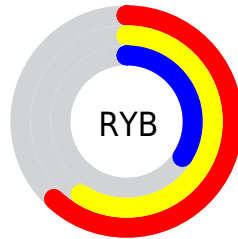
The Hex color **9F7957** is a dark color, and the websafe version is hex **996633**. A complement of this color would be **577D9F**, and the grayscale version is **818181**.

A 20% lighter version of the original color is **D7AD89**, and **694829** is the 20% darker color. If you saturate the color by 10%, you get **9F7147**, and if you desaturate by 10%, it is **9F8167**.

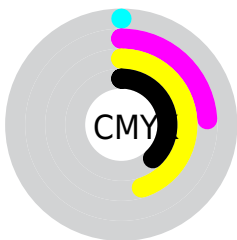
Distribution



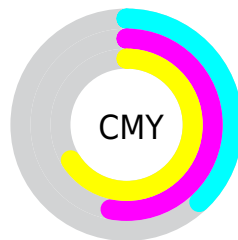
- Red (62%)
- Green (47%)
- Blue (34%)



- Red (62%)
- Yellow (59%)
- Blue (34%)



- Cyan (0%)
- Magenta (24%)
- Yellow (45%)
- Black (38%)



- Cyan (38%)
- Magenta (53%)
- Yellow (66%)

Brightness & Saturation Gradients

These gradients show how the Hex color 9F7957 changes by changing the brightness by 10 percent. The first figure shows a shift by +10% for each color and the second figure -10%.

Similar to the brightness gradients but the following saturation gradients show a change of the Hex color 9F7957 by changing the saturation by 10% instead.



9F7957



9F7957

FFFFFF



84603F



D7AD89



694829



F4C9A4



503213



FFE5BF



381D00



FFFFDB



200500



FFFFF7



000000



9F7957



9F7957



9F7147



9F8167



9F6837



9F8A77

 9F6027

 9F9287

 9F5717

 9F9B97

 9F4F07

 9FA3A6

 9F4B00

 9FABB6

 9FB4C6

 9FBCD6

 9FC5E6

Harmonies

Analogous

The Analogous color harmony consists of three colors that are next to each other on the color wheel.



AB7266



9F7957



8B8153

Triad

The Triadic color harmony groups three colors that are evenly spaced from another and form a triangle on the color wheel.



9F7957



3D8D85



8A79A5

Complementary

The Complementary color scheme is a pair of colors which are on the opposite of each other on the color wheel.



9F7957



577D9F

Split Complementary

Split-complementary colors differ from the complementary color scheme. The scheme consists of three colors, the original color and two neighbors of the complement color.



6A81AD



9F7957



338C9B

Square

The Square scheme is like the rectangle color scheme, but the four colors are evenly spaced on the color wheel.



9F7957



578B6E



4788AA



A27293

Rectangle

The Rectangle color scheme consists of four colors that form a rectangle on the color wheel.



9F7957



7B8557



4788AA



807BA9

Sweetspot

The Sweet Spot groups the original color and five complimentary colors.



9F7957



CFBFB2



9F577D



695F57



E8E8E8



696969

Same Dimension

The Same Dimension uses a secret algorithm to generate beautiful new colors.



9F7957



CF945F



9F9D57



4F4B47



8F4300



0F0700

Inverse Universe

The Inverse Universe completely reimagines the original color for something new.



577D9F



5F9ACF



57599F



474B4F



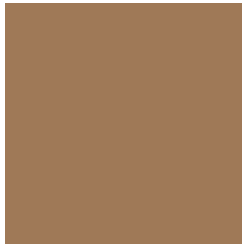
004B8F



00080F

Previews

White Background



This preview shows how the Hex color 9F7957 looks on a white background.

Color Contrast Check

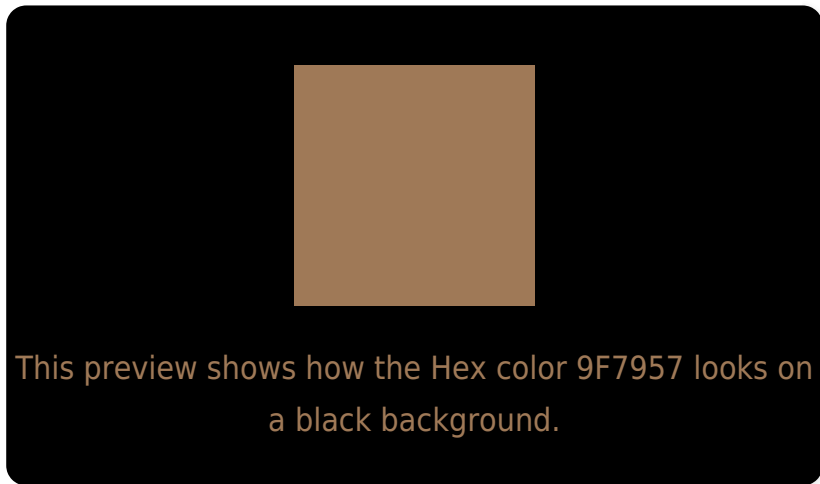
Large Text (above 18pt) WCAG AA ✓ Pass

Any Text WCAG AA × Fail

Large Text (above 18pt) WCAG AAA × Fail

Any Text WCAG AAA × Fail

Black Background



Color Contrast Check

Large Text (above 18pt) WCAG AA ✓ Pass

Any Text WCAG AA ✓ Pass

Large Text (above 18pt) WCAG AAA ✓ Pass

Any Text WCAG AAA × Fail

If you want to check with other color combinations, try the [Color Contrast Checker](#).

Hex 9F7957 Background



This preview shows how black text looks on a background with the Hex color 9F7957.



This preview shows how white text looks on a background with the Hex color 9F7957.

Color Blindness Simulation

Color vision deficiency is a very complex topic, and I could not describe the different causes any better than Wikipedia does, so if you want to learn more, you should check out their [article about color blindness](#).

Dichromacy



Original Color
9F7957

Protanopia
8B815A

Deuteranopia
9A7B57



Tritanopia
A2747D

Trichromacy



Original Color
9F7957

Protanomaly
927E59

Deuteranomaly
9C7A57

Tritanomaly
A1766F

Monochromacy



Original Color
9F7957

Achromatopsia
808080

Achromatomaly
8B7D71

CSS Examples

Text

The CSS property to change the color of the text to Hex 9F7957 is called "color". The color property can be set on classes, ids or directly on the HTML element.

This example shows how text in the color #9F7957 looks like.

```
.text, #text, p{  
    color:#9F7957  
}
```

If you want to add a text shadow in that color use the text-shadow property, you can generate a text shadow directly with our [CSS Text Shadow Generator](#).

Here you see how black text with a 4 pixel #9F7957 colored shadow looks like.

```
.shadow{ text-shadow: 4px 4px 2px #9F7957
}
```

Border

The CSS property to change the border of an element to Hex 9F7957 is called "border". The border property can be set on classes, ids or directly on the HTML element.

This example shows the color as border, it can be applied via the CSS property "border" or "border-color".

```
.border, #border, table{ border:4px solid
#9F7957 }
```

If only the border color should be changed use the property border-color.

```
.border{ border-color:#9F7957 }
```

If you want to add a box shadow in that color use:

Here you see how a box with a 4 pixel #9F7957 colored shadow looks like.

```
.boxshadow{ -moz-box-shadow:4px 4px 4px  
4px #9F7957; -webkit-box-shadow:4px 4px  
4px 4px #9F7957; box-shadow:4px 4px 4px  
4px #9F7957 }
```

Background

The CSS property to change the background color of an element to Hex 9F7957 is called "background". The background property can be set on classes, ids or directly on the HTML element.

```
.background, #background, body{  
background:#9F7957 }
```

If only the background color should be changed can be used:

```
.background{ background-color:#9F7957 }
```

This example shows the color as background, it is applied via the CSS property "background".

To optimize and compress your CSS code, you can use our [online CSS compressor and optimizer](#) based on csstidy. If you want to create a linear or radial gradient as background or border, check our [CSS Gradient Generator](#).

Hey! You found this booklet interesting? Support Converting Colors with the new Membership Option!

The pro membership hides all ads, plus gives you double the colors in the color bucket, and more awesome pro features!

[Learn more, Memberships starting at \\$2.50/m!](#)

**Follow me
on Twitter!**

@ConvertingColor