

# Converting Colors

Hex(9F7F66)

Have a look what the booklet for  
Hex(9F7F66) contains.

<b>Hex(9F7F66)</b> .....	3
<b><i>Conversions</i></b> .....	4
<b><i>Details</i></b> .....	6
<b><i>Harmonies</i></b> .....	11
<b><i>Previews</i></b> .....	23
<b><i>Color Blindness Simulation</i></b> .....	26
<b><i>CSS Examples</i></b> .....	29

**Color**

**Hex(9F7F66)**

# Conversions

## Conversions Part 1

<b>Format</b>	<b>Color</b>
Hex	9F7F66
RGB	159, 127, 102
RGB Percent	62%, 50%, 40%
CMY	0.3765, 0.5020, 0.6000
CMYK	0.00, 0.20, 0.36, 0.38
HSL	26°, 23%, 51%
HSV	26°, 36%, 62%
XYZ	24.2857, 23.5090, 15.8281
YIQ	133.7180, 27.0970, -0.9910

# Conversions

## Conversions Part 2

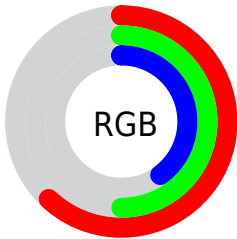
<b>Format</b>	<b>Color</b>
<b>R<sub>YB</sub></b>	159, 147, 102
Decimal	10452838
CIE <sub>Lab</sub>	55.59, 8.69, 18.28
CIE <sub>LCh</sub>	56, 20.236, 64.571
Yxy	23.5090, 0.3817, 0.3695
Android (android.graphics.Color)	4288642918 (0xFF9F7F66)
YUV	133.7180, -15.6370, 22.1723
Hunter-Lab	48.4861, 4.5566, 14.5853

# Details

The Hex color **9F7F66** is a dark color, and the websafe version is hex **996666**. A complement of this color would be **66869F**, and the grayscale version is **868686**.

A 20% lighter version of the original color is **D7B499**, and **6A4E37** is the 20% darker color. If you saturate the color by 10%, you get **9F7656**, and if you desaturate by 10%, it is **9F8876**.

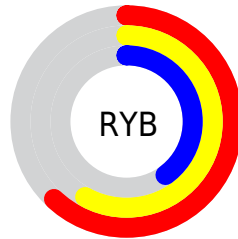
# Distribution



Red (62%)

Green (50%)

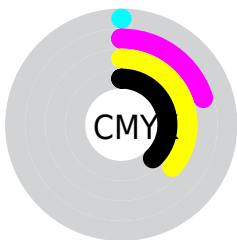
Blue (40%)



Red (62%)

Yellow (58%)

Blue (40%)

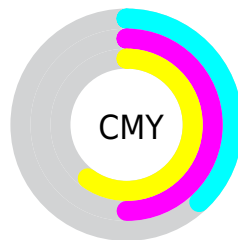


Cyan (0%)

Magenta (20%)

Yellow (36%)

Black (38%)



Cyan (38%)

Magenta (50%)

Yellow (60%)

# Brightness & Saturation Gradients

These gradients show how the Hex color 9F7F66 changes by changing the brightness by 10 percent. The first figure shows a shift by +10% for each color and the second figure -10%.

Similar to the brightness gradients but the following saturation gradients show a change of the Hex color 9F7F66 by changing the saturation by 10% instead.





9F7F66



9F7F66

FFFFFF



84664E



D7B499



6A4E37



F3CFB4



513721



FFEBD0



39220C



FFFEC



230D00



000000



9F7F66



9F7F66



9F7656



9F8876



9F6D46



9F9186

 9F6436

 9F9A96

 9F5B26

 9FA3A6

 9F5216

 9FACB6

 9F4907

 9FB5C5

 9F4600

 9FBDD5

 9FC6E5

 9FCFF5

# Harmonies

## Analogous

The Analogous color harmony consists of three colors that are next to each other on the color wheel.



A87A72



9F7F66



8F8562

# Triad

The Triadic color harmony groups three colors that are evenly spaced from another and form a triangle on the color wheel.



9F7F66



588F87



8B80A2

# Complementary

The Complementary color scheme is a pair of colors which are on the opposite of each other on the color wheel.



9F7F66



66869F

# Split Complementary

Split-complementary colors differ from the complementary color scheme. The scheme consists of three colors, the original color and two neighbors of the complement color.



7486A8



9F7F66



528E98

# Square

The Square scheme is like the rectangle color scheme, but the four colors are evenly spaced on the color wheel.



9F7F66



688E76



5D8BA4



9E7B95

# Rectangle

The Rectangle color scheme consists of four colors that form a rectangle on the color wheel.



9F7F66



838965



5D8BA4



8482A5



# Sweetspot

The Sweet Spot groups the original color and five complimentary colors.



9F7F66



CFC2B8



9F6686



69615B



E8E8E8



696969



# Same Dimension

The Same Dimension uses a secret algorithm to generate beautiful new colors.



9F7F66



CF9D76



9F9B66



4F4B47



8F3F00



0F0700



# Inverse Universe

The Inverse Universe completely reimagines the original color for something new.



66869F



76A8CF



666A9F



474C4F



00508F

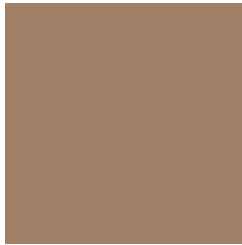


00090F



# Previews

## White Background



This preview shows how the Hex color 9F7F66 looks on a white background.

## Color Contrast Check

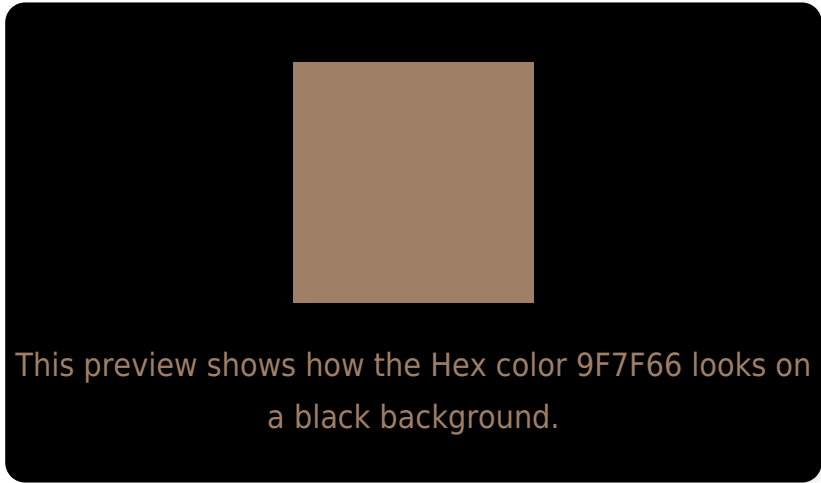
Large Text (above 18pt) WCAG AA ✓ Pass

Any Text WCAG AA × Fail

Large Text (above 18pt) WCAG AAA × Fail

Any Text WCAG AAA × Fail

# Black Background



## Color Contrast Check

Large Text (above 18pt) WCAG AA ✓ Pass

Any Text WCAG AA ✓ Pass

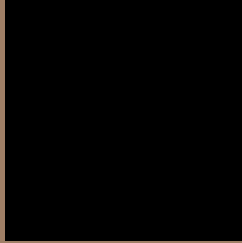
Large Text (above 18pt) WCAG AAA ✓ Pass

Any Text WCAG AAA × Fail

If you want to check with other color combinations, try the [Color Contrast Checker](#).



## Hex 9F7F66 Background



This preview shows how black text looks on a background with the Hex color 9F7F66.



This preview shows how white text looks on a background with the Hex color 9F7F66.

# Color Blindness Simulation

Color vision deficiency is a very complex topic, and I could not describe the different causes any better than Wikipedia does, so if you want to learn more, you should check out their [article about color blindness](#).

## Dichromacy



**Original Color**  
9F7F66

**Protanopia**  
8E8569

**Deuteranopia**  
9D8066



**Tritanopia**  
A27B84

# Trichromacy



**Original Color**  
9F7F66

**Protanomaly**  
948368

**Deuteranomaly**  
9E8066

**Tritanomaly**  
A17C79

# Monochromacy



**Original Color**  
9F7F66

**Achromatopsia**  
868686

**Achromatomaly**  
8F837A

# CSS Examples

## Text

The CSS property to change the color of the text to Hex 9F7F66 is called "color". The color property can be set on classes, ids or directly on the HTML element.

This example shows how text in the color #9F7F66 looks like.

```
.text, #text, p{  
    color:#9F7F66  
}
```

If you want to add a text shadow in that color use the text-shadow property, you can generate a text shadow directly with our [CSS Text Shadow Generator](#).

Here you see how black text with a 4 pixel #9F7F66 colored shadow looks like.

```
.shadow{ text-shadow: 4px 4px 2px #9F7F66
}
```

## Border

The CSS property to change the border of an element to Hex 9F7F66 is called "border". The border property can be set on classes, ids or directly on the HTML element.

This example shows the color as border, it can be applied via the CSS property "border" or "border-color".

```
.border, #border, table{ border:4px solid
#9F7F66 }
```

If only the border color should be changed use the property `border-color`.

```
.border{ border-color:#9F7F66 }
```

If you want to add a box shadow in that color use:

Here you see how a box with a 4 pixel #9F7F66 colored shadow looks like.

```
.boxshadow{ -moz-box-shadow:4px 4px 4px  
4px #9F7F66; -webkit-box-shadow:4px 4px  
4px 4px #9F7F66; box-shadow:4px 4px 4px  
4px #9F7F66 }
```

# Background

The CSS property to change the background color of an element to Hex 9F7F66 is called "background". The background property can be set on classes, ids or directly on the HTML element.

```
.background, #background, body{  
background:#9F7F66 }
```

If only the background color should be changed can be used:

```
.background{ background-color:#9F7F66 }
```

This example shows the color as background, it is applied via the CSS property "background".

To optimize and compress your CSS code, you can use our [online CSS compressor and optimizer](#) based on csstidy. If you want to create a linear or radial gradient as background or border, check our [CSS Gradient Generator](#).



Hey! You found this booklet interesting? Support Converting Colors with the new Membership Option!

The pro membership hides all ads, plus gives you double the colors in the color bucket, and more awesome pro features!

**[Learn more, Memberships starting at \\$2.50/m!](#)**

**Follow me  
on Twitter!**

@ConvertingColor