

# Converting Colors

Hex(A0724A)

Have a look what the booklet for  
Hex(A0724A) contains.

<b>Hex(A0724A)</b> .....	3
<b><i>Conversions</i></b> .....	4
<b><i>Details</i></b> .....	6
<b><i>Harmonies</i></b> .....	11
<b><i>Previews</i></b> .....	23
<b><i>Color Blindness Simulation</i></b> .....	26
<b><i>CSS Examples</i></b> .....	29

**Color**

**Hex(A0724A)**

# Conversions

## Conversions Part 1

<b>Format</b>	<b>Color</b>
Hex	A0724A
RGB	160, 114, 74
RGB Percent	63%, 45%, 29%
CMY	0.3725, 0.5529, 0.7098
CMYK	0.00, 0.29, 0.54, 0.37
HSL	28°, 37%, 46%
HSV	28°, 54%, 63%
XYZ	21.7505, 20.0026, 9.1931
YIQ	123.1940, 40.2560, -2.6880

# Conversions

## Conversions Part 2

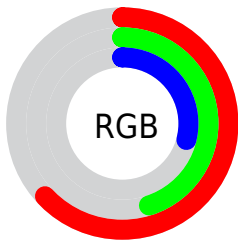
<b>Format</b>	<b>Color</b>
<b>R<sub>YB</sub></b>	160, 149, 74
Decimal	10515018
CIE Lab	51.84, 13.42, 29.23
CIE LCh	52, 32.158, 65.343
Yxy	20.0026, 0.4269, 0.3926
Android (android.graphics.Color)	4288705098 (0xFFA0724A)
YUV	123.1940, -24.2526, 32.2789
Hunter-Lab	44.7243, 8.5415, 19.1199

# Details

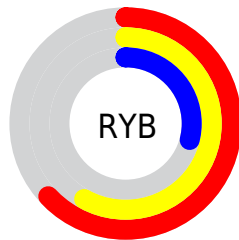
The Hex color **A0724A** is a dark color, and the websafe version is hex **996633**. A complement of this color would be **4A78A0**, and the grayscale version is **7B7B7B**.

A 20% lighter version of the original color is **D9A67B**, and **6A421C** is the 20% darker color. If you saturate the color by 10%, you get **A0693A**, and if you desaturate by 10%, it is **A07B5A**.

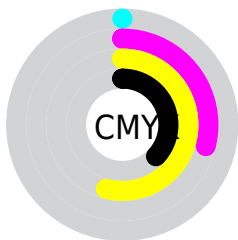
# Distribution



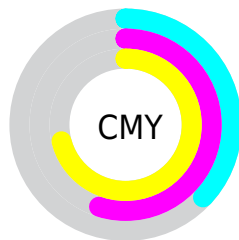
- Red (63%)
- Green (45%)
- Blue (29%)



- Red (63%)
- Yellow (58%)
- Blue (29%)



- Cyan (0%)
- Magenta (29%)
- Yellow (54%)
- Black (37%)



- Cyan (37%)
- Magenta (55%)
- Yellow (71%)

# Brightness & Saturation Gradients

These gradients show how the Hex color A0724A changes by changing the brightness by 10 percent. The first figure shows a shift by +10% for each color and the second figure -10%.

Similar to the brightness gradients but the following saturation gradients show a change of the Hex color A0724A by changing the saturation by 10% instead.





A0724A



A0724A

FFFFFF



845933



D9A67B



6A421C



F6C195



502C05



FFDDB0



361700



FFFACC



1F0000



FFFFE8



000000



A0724A



A0724A



A0693A



A07B5A



A0612A



A0836A

 A0581A

 A08C7A

 A0500A

 A0948A

 A04A00

 A09D9A

 A0A5AA

 A0AEBA

 A0B6CA

 A0BFDA

# Harmonies

## Analogous

The Analogous color harmony consists of three colors that are next to each other on the color wheel.



AE695D



A0724A



897C44

# Triad

The Triadic color harmony groups three colors that are evenly spaced from another and form a triangle on the color wheel.



A0724A



1A8A80



8573A9

# Complementary

The Complementary color scheme is a pair of colors which are on the opposite of each other on the color wheel.



A0724A



4A78A0

# Split Complementary

Split-complementary colors differ from the complementary color scheme. The scheme consists of three colors, the original color and two neighbors of the complement color.



5A7DB2



A0724A



00899B

# Square

The Square scheme is like the rectangle color scheme, but the four colors are evenly spaced on the color wheel.



A0724A



498864



2285AD



A26993

# Rectangle

The Rectangle color scheme consists of four colors that form a rectangle on the color wheel.



A0724A



768149



2285AD



7876AD



# Sweetspot

The Sweet Spot groups the original color and five complimentary colors.



A0724A



D1BFB0



A04A79



695E55



E8E8E8



696969



# Same Dimension

The Same Dimension uses a secret algorithm to generate beautiful new colors.



A0724A



D18849



A09C4A



4F4B47



8F4200



0F0700



# Inverse Universe

The Inverse Universe completely reimagines the original color for something new.



4A78A0



4992D1



4A4EA0



474B4F



004C8F

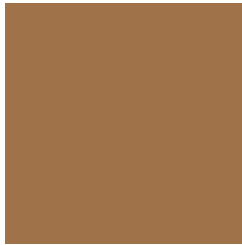


00080F



# Previews

## White Background



This preview shows how the Hex color A0724A looks on a white background.

## Color Contrast Check

Large Text (above 18pt) WCAG AA ✓ Pass

Any Text WCAG AA × Fail

Large Text (above 18pt) WCAG AAA × Fail

Any Text WCAG AAA × Fail

# Black Background



## Color Contrast Check

Large Text (above 18pt) WCAG AA ✓ Pass

Any Text WCAG AA ✓ Pass

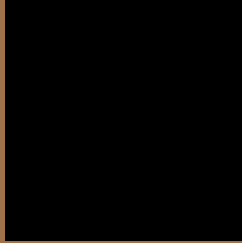
Large Text (above 18pt) WCAG AAA ✓ Pass

Any Text WCAG AAA × Fail

If you want to check with other color combinations, try the [Color Contrast Checker](#).



## Hex A0724A Background



This preview shows how black text looks on a background with the Hex color A0724A.



This preview shows how white text looks on a background with the Hex color A0724A.

# Color Blindness Simulation

Color vision deficiency is a very complex topic, and I could not describe the different causes any better than Wikipedia does, so if you want to learn more, you should check out their [article about color blindness](#).


## Dichromacy



**Original Color**  
A0724A

**Protanopia**  
877C4E

**Deuteranopia**  
977649



**Tritanopia**  
A36D75

# Trichromacy



**Original Color**  
A0724A

**Protanomaly**  
90784D

**Deuteranomaly**  
9A7549

**Tritanomaly**  
A26F65

# Monochromacy



**Original Color**  
A0724A

**Achromatopsia**  
7B7B7B

**Achromatomaly**  
887869

# CSS Examples

## Text

The CSS property to change the color of the text to Hex A0724A is called "color". The color property can be set on classes, ids or directly on the HTML element.

This example shows how text in the color #A0724A looks like.

```
.text, #text, p{  
    color:#A0724A  
}
```

If you want to add a text shadow in that color use the text-shadow property, you can generate a text shadow directly with our [CSS Text Shadow Generator](#).

Here you see how black text with a 4 pixel #A0724A colored shadow looks like.

```
.shadow{ text-shadow: 4px 4px 2px #A0724A
}
```

## Border

The CSS property to change the border of an element to Hex A0724A is called "border". The border property can be set on classes, ids or directly on the HTML element.

This example shows the color as border, it can be applied via the CSS property "border" or "border-color".

```
.border, #border, table{ border:4px solid
#A0724A }
```

If only the border color should be changed use the property `border-color`.

```
.border{ border-color:#A0724A }
```

If you want to add a box shadow in that color use:

Here you see how a box with a 4 pixel #A0724A colored shadow looks like.

```
.boxshadow{ -moz-box-shadow:4px 4px 4px  
4px #A0724A; -webkit-box-shadow:4px 4px  
4px 4px #A0724A; box-shadow:4px 4px 4px  
4px #A0724A }
```

# Background

The CSS property to change the background color of an element to Hex A0724A is called "background". The background property can be set on classes, ids or directly on the HTML element.

```
.background, #background, body{  
background:#A0724A }
```

If only the background color should be changed can be used:

```
.background{ background-color:#A0724A }
```

This example shows the color as background, it is applied via the CSS property "background".

To optimize and compress your CSS code, you can use our [online CSS compressor and optimizer](#) based on csstidy. If you want to create a linear or radial gradient as background or border, check our [CSS Gradient Generator](#).



Hey! You found this booklet interesting? Support Converting Colors with the new Membership Option!

The pro membership hides all ads, plus gives you double the colors in the color bucket, and more awesome pro features!

**[Learn more, Memberships starting at \\$2.50/m!](#)**

**Follow me  
on Twitter!**

@ConvertingColor