

# Converting Colors

Hex(A07556)

Have a look what the booklet for  
Hex(A07556) contains.

<b>Hex(A07556)</b> .....	3
<b><i>Conversions</i></b> .....	4
<b><i>Details</i></b> .....	6
<b><i>Harmonies</i></b> .....	11
<b><i>Previews</i></b> .....	23
<b><i>Color Blindness Simulation</i></b> .....	26
<b><i>CSS Examples</i></b> .....	29

**Color**

**Hex(A07556)**

# Conversions

## Conversions Part 1

<b>Format</b>	<b>Color</b>
Hex	A07556
RGB	160, 117, 86
RGB Percent	63%, 46%, 34%
CMY	0.3725, 0.5412, 0.6627
CMYK	0.00, 0.27, 0.46, 0.37
HSL	25°, 30%, 48%
HSV	25°, 46%, 63%
XYZ	22.5382, 20.8680, 11.6441
YIQ	126.3230, 35.5790, -0.5250

# Conversions

## Conversions Part 2

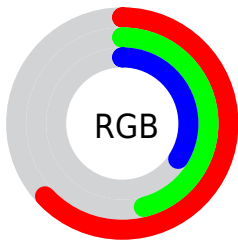
<b>Format</b>	<b>Color</b>
<b>RYB</b>	160, 139, 86
Decimal	10515798
CIELab	52.80, 12.91, 23.70
CIElCh	53, 26.984, 61.426
Yxy	20.8680, 0.4094, 0.3791
Android (android.graphics.Color)	4288705878 (0xFFA07556)
YUV	126.3230, -19.8792, 29.5347
Hunter-Lab	45.6816, 8.1250, 16.8642

# Details

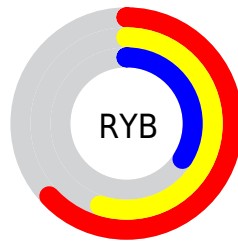
The Hex color **A07556** is a dark color, and the websafe version is hex **996633**. A complement of this color would be **5681A0**, and the grayscale version is **7E7E7E**.

A 20% lighter version of the original color is **D8A988**, and **6A4528** is the 20% darker color. If you saturate the color by 10%, you get **A06C46**, and if you desaturate by 10%, it is **A07E66**.

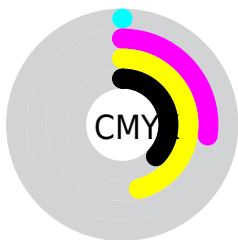
# Distribution



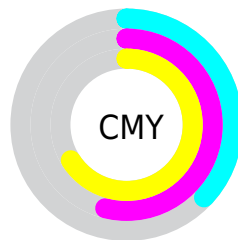
- Red (63%)
- Green (46%)
- Blue (34%)



- Red (63%)
- Yellow (55%)
- Blue (34%)



- Cyan (0%)
- Magenta (27%)
- Yellow (46%)
- Black (37%)



- Cyan (37%)
- Magenta (54%)
- Yellow (66%)

# Brightness & Saturation Gradients

These gradients show how the Hex color A07556 changes by changing the brightness by 10 percent. The first figure shows a shift by +10% for each color and the second figure -10%.

Similar to the brightness gradients but the following saturation gradients show a change of the Hex color A07556 by changing the saturation by 10% instead.



 A07556

 A07556

FFFFFF

 855C3E

 D8A988

 6A4528

 F6C4A2

 502E13

 FFE0BE

 381900

 FFFDD9

 210000

 FFFFF6

 000000

 A07556

 A07556

 A06C46

 A07E66

 A06236

 A08876

 A05926

 A09186

 A05016

 A09A96

 A04706

 A0A3A6

 A04300

 A0ADB6

 A0B6C6

 A0BFD6

 A0C9E6

# Harmonies

## Analogous

The Analogous color harmony consists of three colors that are next to each other on the color wheel.



AB6E67



A07556



8D7D4F

# Triad

The Triadic color harmony groups three colors that are evenly spaced from another and form a triangle on the color wheel.



A07556



3D8B7E



8278A6

# Complementary

The Complementary color scheme is a pair of colors which are on the opposite of each other on the color wheel.



A07556



5681A0

# Split Complementary

Split-complementary colors differ from the complementary color scheme. The scheme consists of three colors, the original color and two neighbors of the complement color.



6080AC



A07556



2C8A95

# Square

The Square scheme is like the rectangle color scheme, but the four colors are evenly spaced on the color wheel.



A07556



598967



3D86A6



9C7095

# Rectangle

The Rectangle color scheme consists of four colors that form a rectangle on the color wheel.



A07556



7D8252



3D86A6



787AA9



# Sweetspot

The Sweet Spot groups the original color and five complimentary colors.



A07556



D1C0B4



A05681



695E57



E8E8E8



696969



# Same Dimension

The Same Dimension uses a secret algorithm to generate beautiful new colors.



A07556



D18D5C



A09A56



4F4A47



8F3C00



0F0600



# Inverse Universe

The Inverse Universe completely reimagines the original color for something new.



5681A0



5CA0D1



565CA0



474C4F



00538F

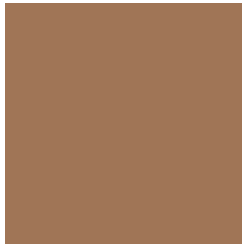


00090F



# Previews

## White Background



This preview shows how the Hex color A07556 looks on a white background.

## Color Contrast Check

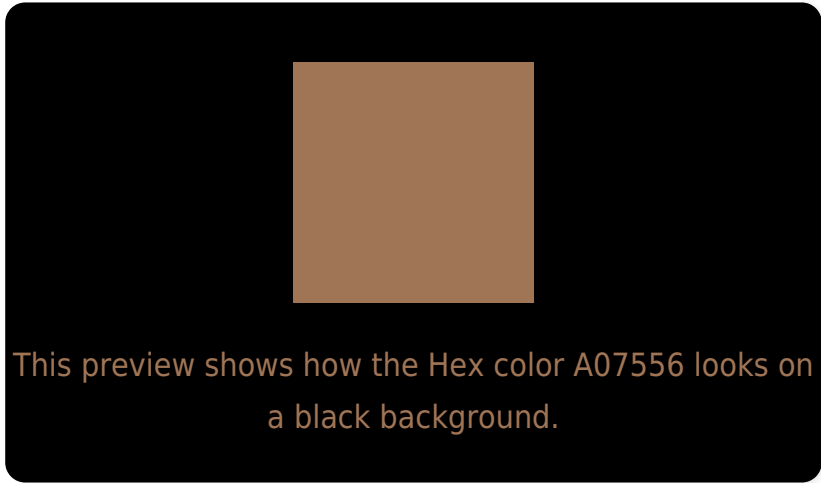
Large Text (above 18pt) WCAG AA ✓ Pass

Any Text WCAG AA × Fail

Large Text (above 18pt) WCAG AAA × Fail

Any Text WCAG AAA × Fail

# Black Background



## Color Contrast Check

Large Text (above 18pt) WCAG AA ✓ Pass

Any Text WCAG AA ✓ Pass

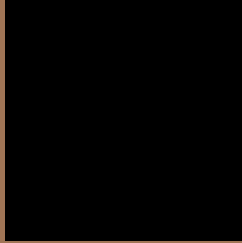
Large Text (above 18pt) WCAG AAA ✓ Pass

Any Text WCAG AAA × Fail

If you want to check with other color combinations, try the [Color Contrast Checker](#).



## Hex A07556 Background



This preview shows how black text looks on a background with the Hex color A07556.



This preview shows how white text looks on a background with the Hex color A07556.

# Color Blindness Simulation

Color vision deficiency is a very complex topic, and I could not describe the different causes any better than Wikipedia does, so if you want to learn more, you should check out their [article about color blindness](#).

## Dichromacy



**Original Color**  
A07556

**Protanopia**  
887E5A

**Deuteranopia**  
977955



**Tritanopia**  
A37079

# Trichromacy



**Original Color**  
A07556

**Protanomaly**  
917B59

**Deuteranomaly**  
9A7855

**Tritanomaly**  
A2726C

# Monochromacy



**Original Color**  
A07556

**Achromatopsia**  
7E7E7E

**Achromatomaly**  
8A7B6F

# CSS Examples

## Text

The CSS property to change the color of the text to Hex A07556 is called "color". The color property can be set on classes, ids or directly on the HTML element.

This example shows how text in the color #A07556 looks like.

```
.text, #text, p{  
    color:#A07556  
}
```

If you want to add a text shadow in that color use the text-shadow property, you can generate a text shadow directly with our [CSS Text Shadow Generator](#).

Here you see how black text with a 4 pixel #A07556 colored shadow looks like.

```
.shadow{ text-shadow: 4px 4px 2px #A07556
}
```

## Border

The CSS property to change the border of an element to Hex A07556 is called "border". The border property can be set on classes, ids or directly on the HTML element.

This example shows the color as border, it can be applied via the CSS property "border" or "border-color".

```
.border, #border, table{ border:4px solid
#A07556 }
```

If only the border color should be changed use the property `border-color`.

```
.border{ border-color:#A07556 }
```

If you want to add a box shadow in that color use:

Here you see how a box with a 4 pixel #A07556 colored shadow looks like.

```
.boxshadow{ -moz-box-shadow:4px 4px 4px  
4px #A07556; -webkit-box-shadow:4px 4px  
4px 4px #A07556; box-shadow:4px 4px 4px  
4px #A07556 }
```

# Background

The CSS property to change the background color of an element to Hex A07556 is called "background". The background property can be set on classes, ids or directly on the HTML element.

```
.background, #background, body{  
background:#A07556 }
```

If only the background color should be changed can be used:

```
.background{ background-color:#A07556 }
```

This example shows the color as background, it is applied via the CSS property "background".

To optimize and compress your CSS code, you can use our [online CSS compressor and optimizer](#) based on csstidy. If you want to create a linear or radial gradient as background or border, check our [CSS Gradient Generator](#).



Hey! You found this booklet interesting? Support Converting Colors with the new Membership Option!

The pro membership hides all ads, plus gives you double the colors in the color bucket, and more awesome pro features!

**[Learn more, Memberships starting at \\$2.50/m!](#)**

**Follow me  
on Twitter!**

@ConvertingColor