

# Converting Colors

Hex(A07657)

Have a look what the booklet for  
Hex(A07657) contains.

<b>Hex(A07657)</b> .....	3
<b><i>Conversions</i></b> .....	4
<b><i>Details</i></b> .....	6
<b><i>Harmonies</i></b> .....	11
<b><i>Previews</i></b> .....	23
<b><i>Color Blindness Simulation</i></b> .....	26
<b><i>CSS Examples</i></b> .....	29

**Color**

**Hex(A07657)**

# Conversions

## Conversions Part 1

<b>Format</b>	<b>Color</b>
Hex	A07657
RGB	160, 118, 87
RGB Percent	63%, 46%, 34%
CMY	0.3725, 0.5373, 0.6588
CMYK	0.00, 0.26, 0.46, 0.37
HSL	25°, 30%, 48%
HSV	25°, 46%, 63%
XYZ	22.6959, 21.1186, 11.8969
YIQ	127.0240, 34.9830, -0.7370

# Conversions

## Conversions Part 2

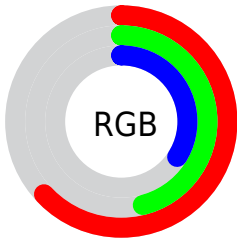
<b>Format</b>	<b>Color</b>
<b>R<sub>YB</sub></b>	160, 141, 87
Decimal	10516055
CIE <sub>Lab</sub>	53.08, 12.44, 23.49
CIE <sub>LCh</sub>	53, 26.581, 62.085
Yxy	21.1186, 0.4074, 0.3791
Android (android.graphics.Color)	4288706135 (0xFFA07657)
YUV	127.0240, -19.7318, 28.9200
Hunter-Lab	45.9549, 7.7353, 16.8193

# Details

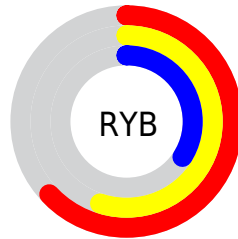
The Hex color **A07657** is a dark color, and the websafe version is hex **996633**. A complement of this color would be **5781A0**, and the grayscale version is **7F7F7F**.

A 20% lighter version of the original color is **D8AA89**, and **6A4629** is the 20% darker color. If you saturate the color by 10%, you get **A06D47**, and if you desaturate by 10%, it is **A07F67**.

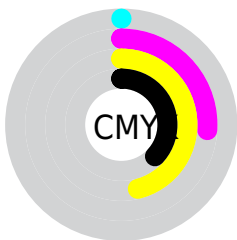
# Distribution



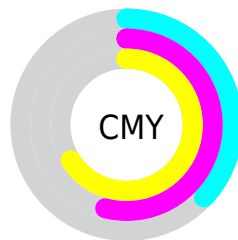
- Red (63%)
- Green (46%)
- Blue (34%)



- Red (63%)
- Yellow (55%)
- Blue (34%)



- Cyan (0%)
- Magenta (26%)
- Yellow (46%)
- Black (37%)



- Cyan (37%)
- Magenta (54%)
- Yellow (66%)

# Brightness & Saturation Gradients

These gradients show how the Hex color A07657 changes by changing the brightness by 10 percent. The first figure shows a shift by +10% for each color and the second figure -10%.

Similar to the brightness gradients but the following saturation gradients show a change of the Hex color A07657 by changing the saturation by 10% instead.



 A07657

 A07657

FFFFFF

 855D3F

 D8AA89

 6A4629

 F5C5A4

 512F14

 FFE1BF

 391A00

 FFFEDB

 210100

 FFFFF7

 000000

 A07657

 A07657

 A06D47

 A07F67

 A06437

 A08877

 A05A27

 A09287

 A05117

 A09B97

 A04807

 A0A4A7

 A04400

 A0ADB7

 A0B6C7

 A0C0D7

 A0C9E7

# Harmonies

## Analogous

The Analogous color harmony consists of three colors that are next to each other on the color wheel.



AB7068



A07657



8D7E51

# Triad

The Triadic color harmony groups three colors that are evenly spaced from another and form a triangle on the color wheel.



A07657



3F8B80



8478A5

# Complementary

The Complementary color scheme is a pair of colors which are on the opposite of each other on the color wheel.



A07657



5781A0

# Split Complementary

Split-complementary colors differ from the complementary color scheme. The scheme consists of three colors, the original color and two neighbors of the complement color.



6280AC



A07657



2F8A96

# Square

The Square scheme is like the rectangle color scheme, but the four colors are evenly spaced on the color wheel.



A07657



5A8969



4087A6



9D7195

# Rectangle

The Rectangle color scheme consists of four colors that form a rectangle on the color wheel.



A07657



7D8354



4087A6



797BA9



# Sweetspot

The Sweet Spot groups the original color and five complimentary colors.



A07657



D1C0B4



A05782



695E57



E8E8E8



696969



# Same Dimension

The Same Dimension uses a secret algorithm to generate beautiful new colors.



A07657



D18F5E



A09A57



4F4B47



8F3D00



0F0600



# Inverse Universe

The Inverse Universe completely reimagines the original color for something new.



5781A0



5EA0D1



575DA0



474C4F



00528F

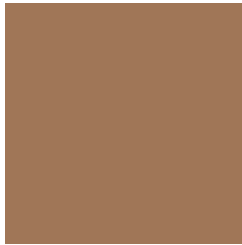


00090F



# Previews

## White Background



This preview shows how the Hex color A07657 looks on a white background.

## Color Contrast Check

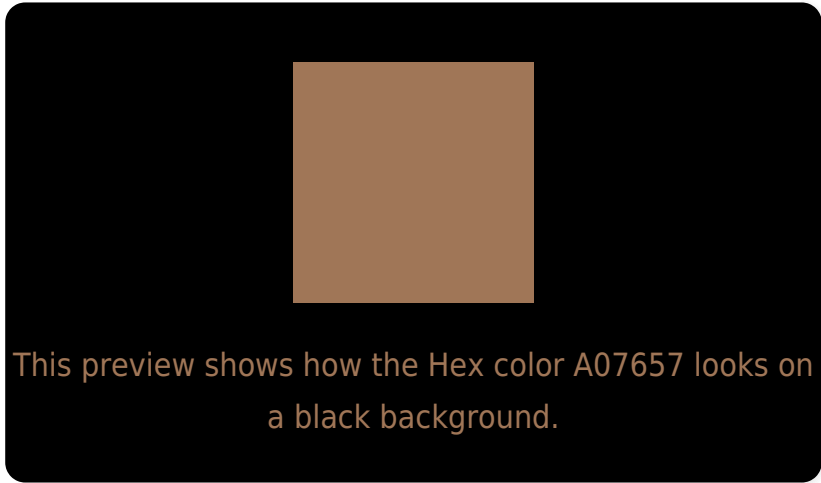
Large Text (above 18pt) WCAG AA ✓ Pass

Any Text WCAG AA × Fail

Large Text (above 18pt) WCAG AAA × Fail

Any Text WCAG AAA × Fail

# Black Background



## Color Contrast Check

Large Text (above 18pt) WCAG AA ✓ Pass

Any Text WCAG AA ✓ Pass

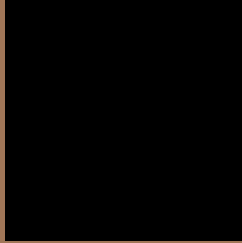
Large Text (above 18pt) WCAG AAA ✓ Pass

Any Text WCAG AAA × Fail

If you want to check with other color combinations, try the [Color Contrast Checker](#).



## Hex A07657 Background



This preview shows how black text looks on a background with the Hex color A07657.



This preview shows how white text looks on a background with the Hex color A07657.

# Color Blindness Simulation

Color vision deficiency is a very complex topic, and I could not describe the different causes any better than Wikipedia does, so if you want to learn more, you should check out their [article about color blindness](#).

## Dichromacy



**Original Color**  
A07657

**Protanopia**  
897F5B

**Deuteranopia**  
987A56



**Tritanopia**  
A3717A

# Trichromacy



**Original Color**  
A07657

**Protanomaly**  
917C5A

**Deuteranomaly**  
9B7956

**Tritanomaly**  
A2736D

# Monochromacy



**Original Color**  
A07657

**Achromatopsia**  
7F7F7F

**Achromatomaly**  
8B7C70

# CSS Examples

## Text

The CSS property to change the color of the text to Hex A07657 is called "color". The color property can be set on classes, ids or directly on the HTML element.

This example shows how text in the color #A07657 looks like.

```
.text, #text, p{  
    color:#A07657  
}
```

If you want to add a text shadow in that color use the text-shadow property, you can generate a text shadow directly with our [CSS Text Shadow Generator](#).

Here you see how black text with a 4 pixel #A07657 colored shadow looks like.

```
.shadow{ text-shadow: 4px 4px 2px #A07657
}
```

## Border

The CSS property to change the border of an element to Hex A07657 is called "border". The border property can be set on classes, ids or directly on the HTML element.

This example shows the color as border, it can be applied via the CSS property "border" or "border-color".

```
.border, #border, table{ border:4px solid
#A07657 }
```

If only the border color should be changed use the property border-color.

```
.border{ border-color:#A07657 }
```

If you want to add a box shadow in that color use:

Here you see how a box with a 4 pixel #A07657 colored shadow looks like.

```
.boxshadow{ -moz-box-shadow:4px 4px 4px  
4px #A07657; -webkit-box-shadow:4px 4px  
4px 4px #A07657; box-shadow:4px 4px 4px  
4px #A07657 }
```

# Background

The CSS property to change the background color of an element to Hex A07657 is called "background". The background property can be set on classes, ids or directly on the HTML element.

```
.background, #background, body{  
background:#A07657 }
```

If only the background color should be changed can be used:

```
.background{ background-color:#A07657 }
```

This example shows the color as background, it is applied via the CSS property "background".

To optimize and compress your CSS code, you can use our [online CSS compressor and optimizer](#) based on csstidy. If you want to create a linear or radial gradient as background or border, check our [CSS Gradient Generator](#).



Hey! You found this booklet interesting? Support Converting Colors with the new Membership Option!

The pro membership hides all ads, plus gives you double the colors in the color bucket, and more awesome pro features!

**[Learn more, Memberships starting at \\$2.50/m!](#)**

**Follow me  
on Twitter!**

@ConvertingColor