

# Converting Colors

Hex(A07D6D)

Have a look what the booklet for  
Hex(A07D6D) contains.

<b>Hex(A07D6D)</b> .....	3
<b><i>Conversions</i></b> .....	4
<b><i>Details</i></b> .....	6
<b><i>Harmonies</i></b> .....	11
<b><i>Previews</i></b> .....	23
<b><i>Color Blindness Simulation</i></b> .....	26
<b><i>CSS Examples</i></b> .....	29

**Color**

**Hex(A07D6D)**

# Conversions

## Conversions Part 1

<b>Format</b>	<b>Color</b>
Hex	A07D6D
RGB	160, 125, 109
RGB Percent	63%, 49%, 43%
CMY	0.3725, 0.5098, 0.5725
CMYK	0.00, 0.22, 0.32, 0.37
HSL	19°, 21%, 53%
HSV	19°, 32%, 63%
XYZ	24.5911, 23.2449, 17.6586
YIQ	133.6410, 25.9960, 2.4440

# Conversions

## Conversions Part 2

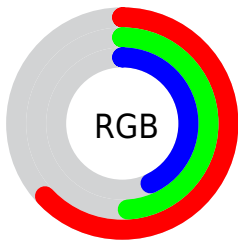
<b>Format</b>	<b>Color</b>
<b>R<sub>YB</sub></b>	160, 132, 109
Decimal	10517869
CIE Lab	55.32, 11.17, 13.90
CIE LCh	55, 17.837, 51.216
Yxy	23.2449, 0.3755, 0.3549
Android (android.graphics.Color)	4288707949 (0xFFA07D6D)
YUV	133.6410, -12.1480, 23.1168
Hunter-Lab	48.2130, 6.6715, 12.0334

# Details

The Hex color **A07D6D** is a dark color, and the websafe version is hex **996666**. A complement of this color would be **6D90A0**, and the grayscale version is **868686**.

A 20% lighter version of the original color is **D8B2A1**, and **6B4C3D** is the 20% darker color. If you saturate the color by 10%, you get **A0725D**, and if you desaturate by 10%, it is **A0887D**.

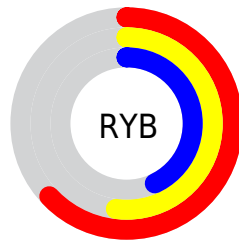
# Distribution



Red (63%)

Green (49%)

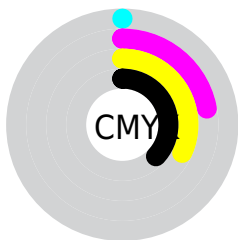
Blue (43%)



Red (63%)

Yellow (52%)

Blue (43%)

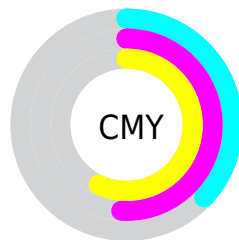


Cyan (0%)

Magenta (22%)

Yellow (32%)

Black (37%)



Cyan (37%)

Magenta (51%)

Yellow (57%)

# Brightness & Saturation Gradients

These gradients show how the Hex color A07D6D changes by changing the brightness by 10 percent. The first figure shows a shift by +10% for each color and the second figure -10%.

Similar to the brightness gradients but the following saturation gradients show a change of the Hex color A07D6D by changing the saturation by 10% instead.



 A07D6D

 A07D6D

FFFFFF

 856455

 D8B2A1

 6B4C3D

 F4CDBC

 523528

 FFE9D7

 3A2013

 FFFFF4

 240A00

 000000

 A07D6D

 A07D6D

 A0725D

 A0887D

 A0674D

 A0938D

 A05C3D

 A09E9D

 A0512D

 A0A9AD

 A0461D

 A0B4BD

 A03B0D

 A0BFCD

 A03200

 A0CADD

 A0D5ED

 A0E0FD

# Harmonies

## Analogous

The Analogous color harmony consists of three colors that are next to each other on the color wheel.



A57A7A



A07D6D



958266

# Triad

The Triadic color harmony groups three colors that are evenly spaced from another and form a triangle on the color wheel.



A07D6D



638D7F



8182A1

# Complementary

The Complementary color scheme is a pair of colors which are on the opposite of each other on the color wheel.



A07D6D



6D90A0

# Split Complementary

Split-complementary colors differ from the complementary color scheme. The scheme consists of three colors, the original color and two neighbors of the complement color.



6C87A3



A07D6D



5A8D8F

# Square

The Square scheme is like the rectangle color scheme, but the four colors are evenly spaced on the color wheel.



A07D6D



738B71



5D8B9C



947D98

# Rectangle

The Rectangle color scheme consists of four colors that form a rectangle on the color wheel.



A07D6D



8A8566



5D8B9C



7A84A3



# Sweetspot

The Sweet Spot groups the original color and five complimentary colors.



A07D6D



D1C3BC



A06D91



69605C



E8E8E8



696969



# Same Dimension

The Same Dimension uses a secret algorithm to generate beautiful new colors.



A07D6D



D19B82



A0966D



4F4A47



8F2D00



0F0500



# Inverse Universe

The Inverse Universe completely reimagines the original color for something new.



6D90A0



82B8D1



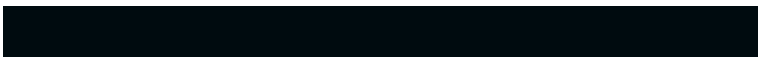
6D77A0



474D4F



00628F

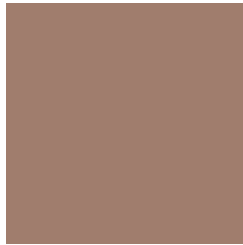


000B0F



# Previews

## White Background



This preview shows how the Hex color A07D6D looks on a white background.

## Color Contrast Check

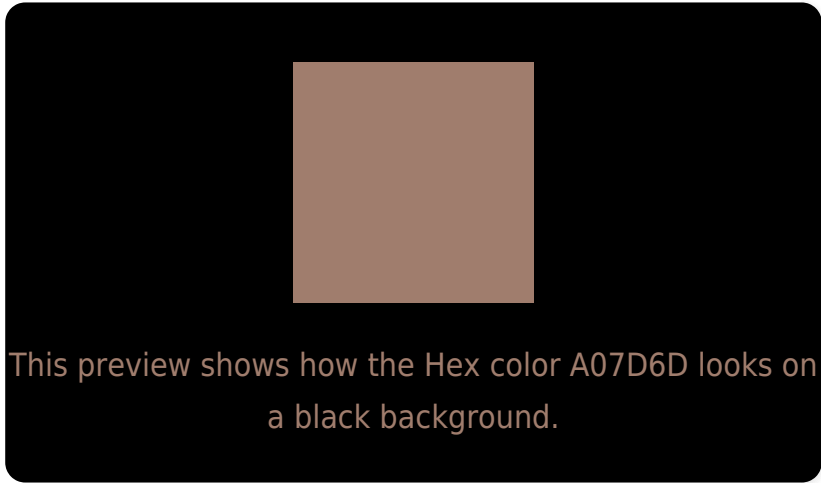
Large Text (above 18pt) WCAG AA ✓ Pass

Any Text WCAG AA × Fail

Large Text (above 18pt) WCAG AAA × Fail

Any Text WCAG AAA × Fail

# Black Background



## Color Contrast Check

Large Text (above 18pt) WCAG AA ✓ Pass

Any Text WCAG AA ✓ Pass

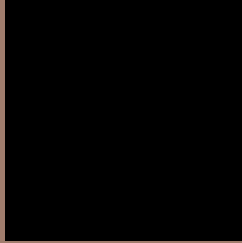
Large Text (above 18pt) WCAG AAA ✓ Pass

Any Text WCAG AAA × Fail

If you want to check with other color combinations, try the [Color Contrast Checker](#).



## Hex A07D6D Background



This preview shows how black text looks on a background with the Hex color A07D6D.



This preview shows how white text looks on a background with the Hex color A07D6D.

# Color Blindness Simulation

Color vision deficiency is a very complex topic, and I could not describe the different causes any better than Wikipedia does, so if you want to learn more, you should check out their [article about color blindness](#).


## Dichromacy



**Original Color**  
A07D6D

**Protanopia**  
8C8471

**Deuteranopia**  
9A806D



**Tritanopia**  
A27A83

# Trichromacy



**Original Color**

A07D6D

**Protanomaly**

938170

**Deuteranomaly**

9C7F6D

**Tritanomaly**

A17B7B

# Monochromacy



**Original Color**

A07D6D

**Achromatopsia**

868686

**Achromatomaly**

8F837D

# CSS Examples

## Text

The CSS property to change the color of the text to Hex A07D6D is called "color". The color property can be set on classes, ids or directly on the HTML element.

This example shows how text in the color #A07D6D looks like.

```
.text, #text, p{  
    color:#A07D6D  
}
```

If you want to add a text shadow in that color use the text-shadow property, you can generate a text shadow directly with our [CSS Text Shadow Generator](#).

Here you see how black text with a 4 pixel #A07D6D colored shadow looks like.

```
.shadow{ text-shadow: 4px 4px 2px #A07D6D
}
```

## Border

The CSS property to change the border of an element to Hex A07D6D is called "border". The border property can be set on classes, ids or directly on the HTML element.

This example shows the color as border, it can be applied via the CSS property "border" or "border-color".

```
.border, #border, table{ border:4px solid
#A07D6D }
```

If only the border color should be changed use the property `border-color`.

```
.border{ border-color:#A07D6D }
```

If you want to add a box shadow in that color use:

Here you see how a box with a 4 pixel #A07D6D colored shadow looks like.

```
.boxshadow{ -moz-box-shadow:4px 4px 4px  
4px #A07D6D; -webkit-box-shadow:4px 4px  
4px 4px #A07D6D; box-shadow:4px 4px 4px  
4px #A07D6D }
```

# Background

The CSS property to change the background color of an element to Hex A07D6D is called "background". The background property can be set on classes, ids or directly on the HTML element.

```
.background, #background, body{  
background:#A07D6D }
```

If only the background color should be changed can be used:

```
.background{ background-color:#A07D6D }
```

This example shows the color as background, it is applied via the CSS property "background".

To optimize and compress your CSS code, you can use our [online CSS compressor and optimizer](#) based on csstidy. If you want to create a linear or radial gradient as background or border, check our [CSS Gradient Generator](#).



Hey! You found this booklet interesting? Support Converting Colors with the new Membership Option!

The pro membership hides all ads, plus gives you double the colors in the color bucket, and more awesome pro features!

**[Learn more, Memberships starting at \\$2.50/m!](#)**

**Follow me  
on Twitter!**

@ConvertingColor