

Converting Colors

Hex(A17956)

Have a look what the booklet for
Hex(A17956) contains.

Hex(A17956)	3
<i>Conversions</i>	4
<i>Details</i>	6
<i>Harmonies</i>	11
<i>Previews</i>	23
<i>Color Blindness Simulation</i>	26
<i>CSS Examples</i>	29

Color

Hex(A17956)

Conversions

Conversions Part 1

Format	Color
Hex	A17956
RGB	161, 121, 86
RGB Percent	63%, 47%, 34%
CMY	0.3686, 0.5255, 0.6627
CMYK	0.00, 0.25, 0.47, 0.37
HSL	28°, 30%, 48%
HSV	28°, 47%, 63%
XYZ	23.2150, 21.9237, 11.8122
YIQ	128.9700, 35.0750, -2.4050

Conversions

Conversions Part 2

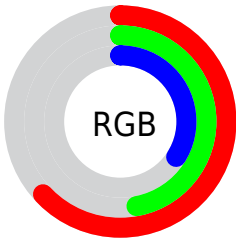
Format	Color
RYB	161, 152, 86
Decimal	10582358
CIELab	53.95, 11.05, 25.21
CIELCh	54, 27.527, 66.322
Yxy	21.9237, 0.4076, 0.3850
Android (android.graphics.Color)	4288772438 (0xFFA17956)
YUV	128.9700, -21.1842, 28.0903
Hunter-Lab	46.8227, 6.5617, 17.8185

Details

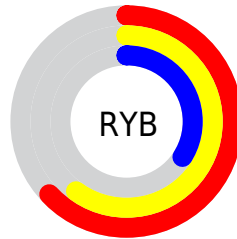
The Hex color **A17956** is a dark color, and the websafe version is hex **996633**. A complement of this color would be **567EA1**, and the grayscale version is **818181**.

A 20% lighter version of the original color is **D9AD88**, and **6B4828** is the 20% darker color. If you saturate the color by 10%, you get **A17046**, and if you desaturate by 10%, it is **A18266**.

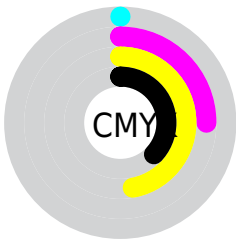
Distribution



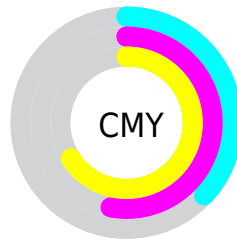
- Red (63%)
- Green (47%)
- Blue (34%)



- Red (63%)
- Yellow (60%)
- Blue (34%)



- Cyan (0%)
- Magenta (25%)
- Yellow (47%)
- Black (37%)



- Cyan (37%)
- Magenta (53%)
- Yellow (66%)

Brightness & Saturation Gradients

These gradients show how the Hex color A17956 changes by changing the brightness by 10 percent. The first figure shows a shift by +10% for each color and the second figure -10%.

Similar to the brightness gradients but the following saturation gradients show a change of the Hex color A17956 by changing the saturation by 10% instead.

 A17956

 A17956

FFFFFF

 86603E

 D9AD88

 6B4828

 F7C9A3

 513212

 FFE5BE

 391D00

 FFFFDA

 210500

 FFFFF6

 000000

 A17956

 A17956

 A17046

 A18266

 A16836

 A18A76

 A15F26

 A19386

 A15716

 A19B96

 A14E06

 A1A4A7

 A14B00

 A1ADB7

 A1B5C7

 A1BED7

 A1C6E7

Harmonies

Analogous

The Analogous color harmony consists of three colors that are next to each other on the color wheel.



AE7266



A17956



8C8151

Triad

The Triadic color harmony groups three colors that are evenly spaced from another and form a triangle on the color wheel.



A17956



3A8E85



8B79A7

Complementary

The Complementary color scheme is a pair of colors which are on the opposite of each other on the color wheel.



A17956



567EA1

Split Complementary

Split-complementary colors differ from the complementary color scheme. The scheme consists of three colors, the original color and two neighbors of the complement color.



6882B0



A17956



2D8D9C

Square

The Square scheme is like the rectangle color scheme, but the four colors are evenly spaced on the color wheel.



A17956



568C6D



4389AC



A37294

Rectangle

The Rectangle color scheme consists of four colors that form a rectangle on the color wheel.



A17956



7B8656



4389AC



807CAB

Sweetspot

The Sweet Spot groups the original color and five complimentary colors.



A17956



D1C1B4



A1567E



695F57



E8E8E8



696969

Same Dimension

The Same Dimension uses a secret algorithm to generate beautiful new colors.



A17956



D1935C



A19F56



524D49



914400



120800

Inverse Universe

The Inverse Universe completely reimagines the original color for something new.



567EA1



5C9AD1



5659A1



494E52



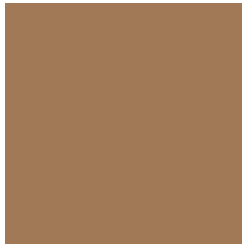
004E91



000A12

Previews

White Background



This preview shows how the Hex color A17956 looks on a white background.

Color Contrast Check

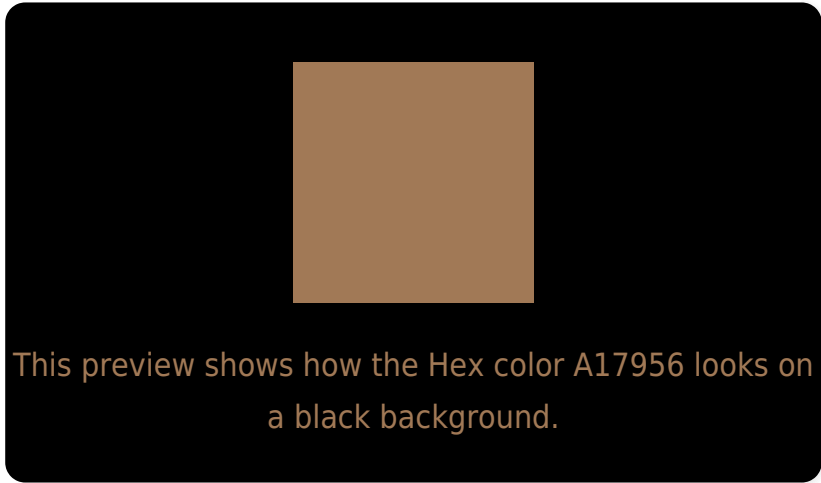
Large Text (above 18pt) WCAG AA ✓ Pass

Any Text WCAG AA × Fail

Large Text (above 18pt) WCAG AAA × Fail

Any Text WCAG AAA × Fail

Black Background



Color Contrast Check

Large Text (above 18pt) WCAG AA ✓ Pass

Any Text WCAG AA ✓ Pass

Large Text (above 18pt) WCAG AAA ✓ Pass

Any Text WCAG AAA × Fail

If you want to check with other color combinations, try the [Color Contrast Checker](#).

Hex A17956 Background



This preview shows how black text looks on a background with the Hex color A17956.



This preview shows how white text looks on a background with the Hex color A17956.

Color Blindness Simulation

Color vision deficiency is a very complex topic, and I could not describe the different causes any better than Wikipedia does, so if you want to learn more, you should check out their [article about color blindness](#).

Dichromacy



Original Color
A17956

Protanopia
8C8159

Deuteranopia
9B7C55



Tritanopia
A5747D

Trichromacy



Original Color
A17956

Protanomaly
947E58

Deuteranomaly
9D7B55

Tritanomaly
A4766F

Monochromacy



Original Color
A17956

Achromatopsia
818181

Achromatomaly
8D7E71

CSS Examples

Text

The CSS property to change the color of the text to Hex A17956 is called "color". The color property can be set on classes, ids or directly on the HTML element.

This example shows how text in the color #A17956 looks like.

```
.text, #text, p{  
    color:#A17956  
}
```

If you want to add a text shadow in that color use the text-shadow property, you can generate a text shadow directly with our [CSS Text Shadow Generator](#).

Here you see how black text with a 4 pixel #A17956 colored shadow looks like.

```
.shadow{ text-shadow: 4px 4px 2px #A17956
}
```

Border

The CSS property to change the border of an element to Hex A17956 is called "border". The border property can be set on classes, ids or directly on the HTML element.

This example shows the color as border, it can be applied via the CSS property "border" or "border-color".

```
.border, #border, table{ border:4px solid
#A17956 }
```

If only the border color should be changed use the property `border-color`.

```
.border{ border-color:#A17956 }
```

If you want to add a box shadow in that color use:

Here you see how a box with a 4 pixel #A17956 colored shadow looks like.

```
.boxshadow{ -moz-box-shadow:4px 4px 4px  
4px #A17956; -webkit-box-shadow:4px 4px  
4px 4px #A17956; box-shadow:4px 4px 4px  
4px #A17956 }
```

Background

The CSS property to change the background color of an element to Hex A17956 is called "background". The background property can be set on classes, ids or directly on the HTML element.

```
.background, #background, body{  
background:#A17956 }
```

If only the background color should be changed can be used:

```
.background{ background-color:#A17956 }
```

This example shows the color as background, it is applied via the CSS property "background".

To optimize and compress your CSS code, you can use our [online CSS compressor and optimizer](#) based on csstidy. If you want to create a linear or radial gradient as background or border, check our [CSS Gradient Generator](#).

Hey! You found this booklet interesting? Support Converting Colors with the new Membership Option!

The pro membership hides all ads, plus gives you double the colors in the color bucket, and more awesome pro features!

[Learn more, Memberships starting at \\$2.50/m!](#)

**Follow me
on Twitter!**

@ConvertingColor