

# Converting Colors

Hex(A18080)

Have a look what the booklet for  
Hex(A18080) contains.

<b>Hex(A18080)</b> .....	3
<i><b>Conversions</b></i> .....	4
<i><b>Details</b></i> .....	6
<i><b>Harmonies</b></i> .....	11
<i><b>Previews</b></i> .....	23
<i><b>Color Blindness Simulation</b></i> .....	26
<i><b>CSS Examples</b></i> .....	29

**Color**

**Hex(A18080)**

# Conversions

## Conversions Part 1

<b>Format</b>	<b>Color</b>
Hex	A18080
RGB	161, 128, 128
RGB Percent	63%, 50%, 50%
CMY	0.3686, 0.4980, 0.4980
CMYK	0.00, 0.20, 0.20, 0.37
HSL	0°, 15%, 57%
HSV	0°, 20%, 63%
XYZ	26.3134, 24.5739, 23.7784
YIQ	137.8670, 19.6680, 6.9960

# Conversions

## Conversions Part 2

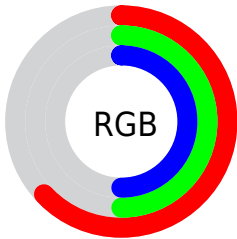
<b>Format</b>	<b>Color</b>
<a href="#">RYB</a>	<a href="#">161, 128, 128</a>
Decimal	<a href="#">10584192</a>
CIELab	<a href="#">56.66, 12.69, 4.83</a>
CIELCh	<a href="#">57, 13.582, 20.841</a>
Yxy	<a href="#">24.5739, 0.3524, 0.3291</a>
Android (android.graphics.Color)	<a href="#">4288774272</a> (0xFFA18080)
YUV	<a href="#">137.8670, -4.8644, 20.2876</a>
Hunter-Lab	<a href="#">49.5721, 7.9985, 6.2606</a>

# Details

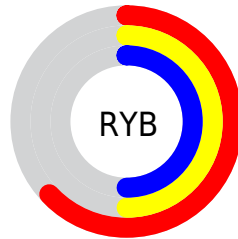
The Hex color **A18080** is a dark color, and the websafe version is hex **996666**. A complement of this color would be **80A1A1**, and the grayscale version is **8A8A8A**.

A 20% lighter version of the original color is **D8B5B5**, and **6D4F4F** is the 20% darker color. If you saturate the color by 10%, you get **A17070**, and if you desaturate by 10%, it is **A19090**.

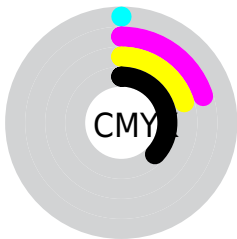
# Distribution



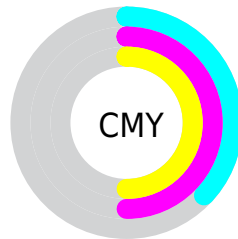
- Red (63%)
- Green (50%)
- Blue (50%)



- Red (63%)
- Yellow (50%)
- Blue (50%)



- Cyan (0%)
- Magenta (20%)
- Yellow (20%)
- Black (37%)



- Cyan (37%)
- Magenta (50%)
- Yellow (50%)

# Brightness & Saturation Gradients

These gradients show how the Hex color A18080 changes by changing the brightness by 10 percent. The first figure shows a shift by +10% for each color and the second figure -10%.

Similar to the brightness gradients but the following saturation gradients show a change of the Hex color A18080 by changing the saturation by 10% instead.



 A18080

 A18080

FFFFFF

 866767

 D8B5B5

 6D4F4F

 F5D0D0

 543838

 FFEDED

 3C2223

 260D0D

 000000

 A18080

 A18080

 A17070

 A19090

 A16060

 A1A0A0

 A15050

 A1B0B0

 A14040

 A1C0C0

 A13030

 A1D1D1

 A11F1F

 A1E1E1

 A10F0F

 A1F1F1

 A10000

 A1FFFF

# Harmonies

## Analogous

The Analogous color harmony consists of three colors that are next to each other on the color wheel.



9E808C



A18080



9E8276

# Triad

The Triadic color harmony groups three colors that are evenly spaced from another and form a triangle on the color wheel.



A18080



7B8D79



768A9F

# Complementary

The Complementary color scheme is a pair of colors which are on the opposite of each other on the color wheel.



A18080



80A1A1

# Split Complementary

Split-complementary colors differ from the complementary color scheme. The scheme consists of three colors, the original color and two neighbors of the complement color.



6C8D9A



A18080



6F8F84

# Square

The Square scheme is like the rectangle color scheme, but the four colors are evenly spaced on the color wheel.



A18080



888A72



698F90



86869E

# Rectangle

The Rectangle color scheme consists of four colors that form a rectangle on the color wheel.



A18080



988572



698F90



728B9E



# Sweetspot

The Sweet Spot groups the original color and five complimentary colors.



A18080



D1C5C5



A180A1



696161



E8E8E8



696969



# Same Dimension

The Same Dimension uses a secret algorithm to generate beautiful new colors.



A18080



D19D9D



A19180



524949



910000



120000



# Inverse Universe

The Inverse Universe completely reimagines the original color for something new.



80A1A1



9DD1D1



8091A1



495252



009191

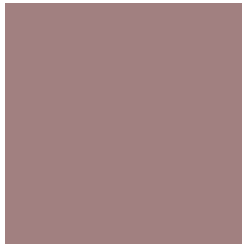


001212



# Previews

## White Background



This preview shows how the Hex color A18080 looks on a white background.

## Color Contrast Check

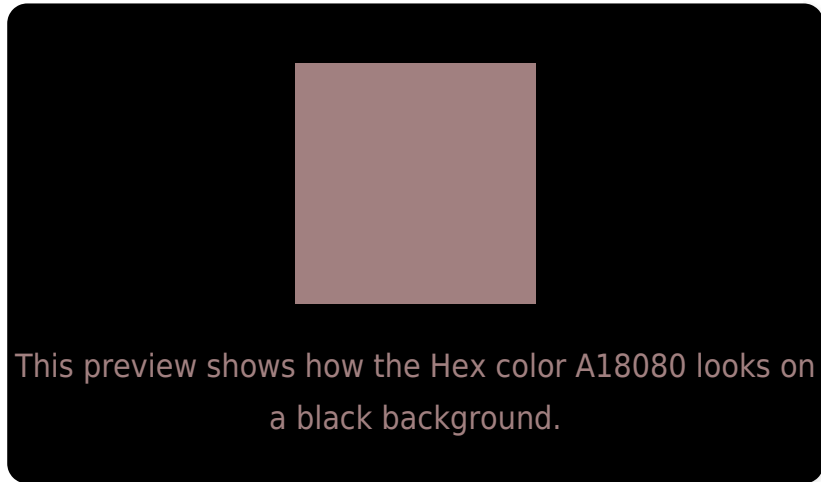
Large Text (above 18pt) WCAG AA ✓ Pass

Any Text WCAG AA ✗ Fail

Large Text (above 18pt) WCAG AAA ✗ Fail

Any Text WCAG AAA ✗ Fail

# Black Background



## Color Contrast Check

Large Text (above 18pt) WCAG AA ✓ Pass

Any Text WCAG AA ✓ Pass

Large Text (above 18pt) WCAG AAA ✓ Pass

Any Text WCAG AAA × Fail

If you want to check with other color combinations, try the [Color Contrast Checker](#).



## Hex A18080 Background



This preview shows how black text looks on a background with the Hex color A18080.

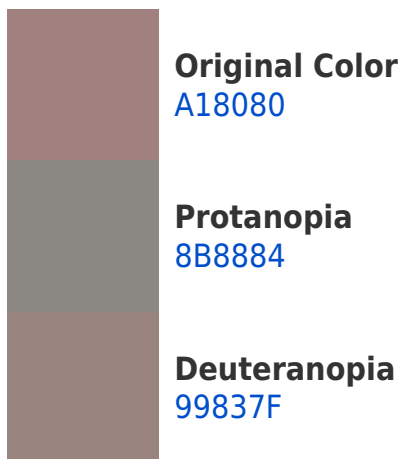


This preview shows how white text looks on a background with the Hex color A18080.

# Color Blindness Simulation

Color vision deficiency is a very complex topic, and I could not describe the different causes any better than Wikipedia does, so if you want to learn more, you should check out their [article about color blindness](#).

## Dichromacy





**Tritanopia**  
A27F88

# Trichromacy



**Original Color**  
A18080

**Protanomaly**  
938583

**Deuteranomaly**  
9C827F

**Tritanomaly**  
A27F85

# Monochromacy



**Original Color**  
A18080

**Achromatopsia**  
8A8A8A

**Achromatomaly**  
928686

# CSS Examples

## Text

The CSS property to change the color of the text to Hex A18080 is called "color". The color property can be set on classes, ids or directly on the HTML element.

This example shows how text in the color #A18080 looks like.

```
.text, #text, p{  
    color:#A18080  
}
```

If you want to add a text shadow in that color use the text-shadow property, you can generate a text shadow directly with our [CSS Text Shadow Generator](#).

Here you see how black text with a 4 pixel #A18080 colored shadow looks like.

```
.shadow{ text-shadow: 4px 4px 2px #A18080
}
```

## Border

The CSS property to change the border of an element to Hex A18080 is called "border". The border property can be set on classes, ids or directly on the HTML element.

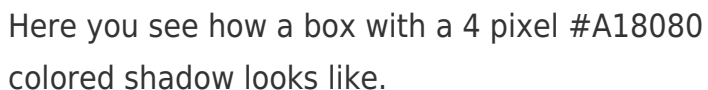
This example shows the color as border, it can be applied via the CSS property "border" or "border-color".

```
.border, #border, table{ border:4px solid
#A18080 }
```

If only the border color should be changed use the property `border-color`.

```
.border{ border-color:#A18080 }
```

If you want to add a box shadow in that color use:



Here you see how a box with a 4 pixel `#A18080` colored shadow looks like.

```
.boxshadow{ -moz-box-shadow:4px 4px 4px  
4px #A18080; -webkit-box-shadow:4px 4px  
4px 4px #A18080; box-shadow:4px 4px 4px  
4px #A18080 }
```

# Background

The CSS property to change the background color of an element to Hex A18080 is called "background". The background property can be set on classes, ids or directly on the HTML element.

```
.background, #background, body{  
background:#A18080 }
```

If only the background color should be changed can be used:

```
.background{ background-color:#A18080 }
```

This example shows the color as background, it is applied via the CSS property "background".

To optimize and compress your CSS code, you can use our [online CSS compressor and optimizer](#) based on csstidy. If you want to create a linear or radial gradient as background or border, check our [CSS Gradient Generator](#).



Hey! You found this booklet interesting? Support Converting Colors with the new Membership Option!

The pro membership hides all ads, plus gives you double the colors in the color bucket, and more awesome pro features!

**[Learn more, Memberships starting at \\$2.50/m!](#)**

**Follow me  
on Twitter!**

@ConvertingColor