

Converting Colors

Hex(A1816A)

Have a look what the booklet for
Hex(A1816A) contains.

Hex(A1816A)	3
<i>Conversions</i>	4
<i>Details</i>	6
<i>Harmonies</i>	11
<i>Previews</i>	23
<i>Color Blindness Simulation</i>	26
<i>CSS Examples</i>	29

Color

Hex(A1816A)

Conversions

Conversions Part 1

Format	Color
Hex	A1816A
RGB	161, 129, 106
RGB Percent	63%, 51%, 42%
CMY	0.3686, 0.4941, 0.5843
CMYK	0.00, 0.20, 0.34, 0.37
HSL	25°, 23%, 52%
HSV	25°, 34%, 63%
XYZ	25.1497, 24.3182, 17.0040
YIQ	135.9460, 26.4550, -0.3690

Conversions

Conversions Part 2

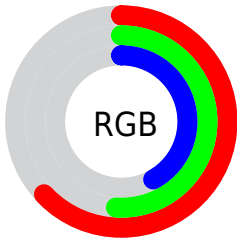
Format	Color
R_{YB}	161, 146, 106
Decimal	10584426
CIE _{Lab}	56.40, 8.91, 17.13
CIE _{LCh}	56, 19.310, 62.532
Yxy	24.3182, 0.3784, 0.3658
Android (android.graphics.Color)	4288774506 (0xFFFA1816A)
YUV	135.9460, -14.7634, 21.9724
Hunter-Lab	49.3135, 4.7359, 14.0754

Details

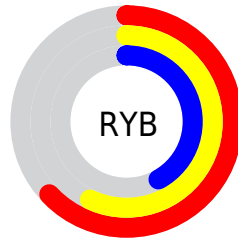
The Hex color **A1816A** is a dark color, and the websafe version is hex **996666**. A complement of this color would be **6A8AA1**, and the grayscale version is **888888**.

A 20% lighter version of the original color is **D9B69D**, and **6C503B** is the 20% darker color. If you saturate the color by 10%, you get **A1785A**, and if you desaturate by 10%, it is **A18A7A**.

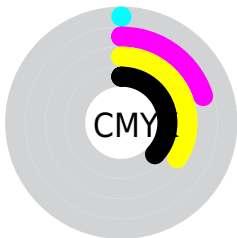
Distribution



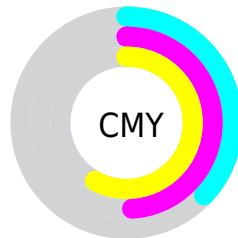
- Red (63%)
- Green (51%)
- Blue (42%)



- Red (63%)
- Yellow (57%)
- Blue (42%)



- Cyan (0%)
- Magenta (20%)
- Yellow (34%)
- Black (37%)



- Cyan (37%)
- Magenta (49%)
- Yellow (58%)

Brightness & Saturation Gradients

These gradients show how the Hex color A1816A changes by changing the brightness by 10 percent. The first figure shows a shift by +10% for each color and the second figure -10%.

Similar to the brightness gradients but the following saturation gradients show a change of the Hex color A1816A by changing the saturation by 10% instead.

 A1816A

 A1816A

FFFFFF

 866852

 D9B69D

 6C503B

 F6D1B8

 533925

 FFEED4

 3B2310

 FFFFF0

 240F00

 000000

 A1816A

 A1816A

 A1785A

 A18A7A

 A16E4A

 A1948A

 A1653A

 A19D9A

 A15C2A

 A1A6AA

 A1521A

 A1B0BB

 A14909

 A1B9CB

 A14300

 A1C3DB

 A1CCEB

 A1D5FB

Harmonies

Analogous

The Analogous color harmony consists of three colors that are next to each other on the color wheel.



A97D76



A1816A



928766

Triad

The Triadic color harmony groups three colors that are evenly spaced from another and form a triangle on the color wheel.



A1816A



5D9188



8C82A4

Complementary

The Complementary color scheme is a pair of colors which are on the opposite of each other on the color wheel.



A1816A



6A8AA1

Split Complementary

Split-complementary colors differ from the complementary color scheme. The scheme consists of three colors, the original color and two neighbors of the complement color.



7588A8



A1816A



579099

Square

The Square scheme is like the rectangle color scheme, but the four colors are evenly spaced on the color wheel.



A1816A



6D8F77



618DA5



9E7D97

Rectangle

The Rectangle color scheme consists of four colors that form a rectangle on the color wheel.



A1816A



868A68



618DA5



8584A6

Sweetspot

The Sweet Spot groups the original color and five complimentary colors.



A1816A



D1C5BC



A16A8A



69615C



E8E8E8



696969

Same Dimension

The Same Dimension uses a secret algorithm to generate beautiful new colors.



A1816A



D19F7B



A19C6A



524D49



913D00



120700

Inverse Universe

The Inverse Universe completely reimagines the original color for something new.



6A8AA1



7BADD1



6A6FA1



494E52



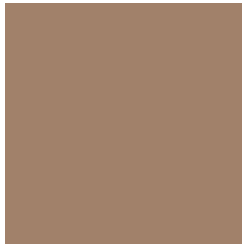
005591



000A12

Previews

White Background



This preview shows how the Hex color A1816A looks on a white background.

Color Contrast Check

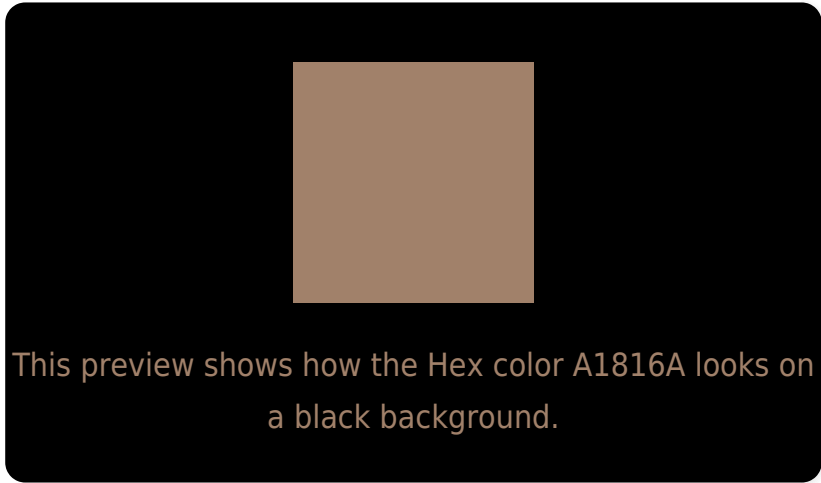
Large Text (above 18pt) WCAG AA ✓ Pass

Any Text WCAG AA × Fail

Large Text (above 18pt) WCAG AAA × Fail

Any Text WCAG AAA × Fail

Black Background



Color Contrast Check

Large Text (above 18pt) WCAG AA ✓ Pass

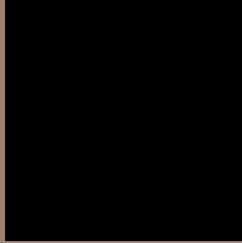
Any Text WCAG AA ✓ Pass

Large Text (above 18pt) WCAG AAA ✓ Pass

Any Text WCAG AAA × Fail

If you want to check with other color combinations, try the [Color Contrast Checker](#).

Hex A1816A Background



This preview shows how black text looks on a background with the Hex color A1816A.



This preview shows how white text looks on a background with the Hex color A1816A.

Color Blindness Simulation

Color vision deficiency is a very complex topic, and I could not describe the different causes any better than Wikipedia does, so if you want to learn more, you should check out their [article about color blindness](#).

Dichromacy



Original Color
A1816A

Protanopia
90876D

Deuteranopia
9F826A

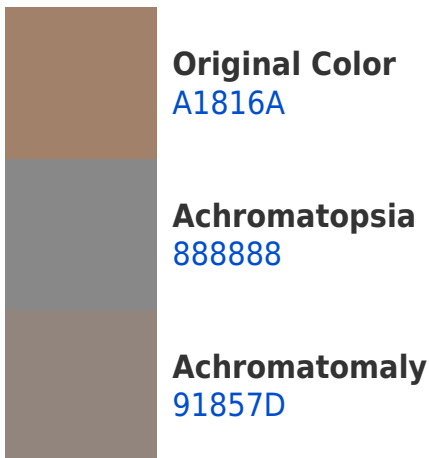


Tritanopia
A47D87

Trichromacy



Monochromacy



CSS Examples

Text

The CSS property to change the color of the text to Hex A1816A is called "color". The color property can be set on classes, ids or directly on the HTML element.

This example shows how text in the color #A1816A looks like.

```
.text, #text, p{  
    color:#A1816A  
}
```

If you want to add a text shadow in that color use the text-shadow property, you can generate a text shadow directly with our [CSS Text Shadow Generator](#).

Here you see how black text with a 4 pixel #A1816A colored shadow looks like.

```
.shadow{ text-shadow: 4px 4px 2px #A1816A
}
```

Border

The CSS property to change the border of an element to Hex A1816A is called "border". The border property can be set on classes, ids or directly on the HTML element.

This example shows the color as border, it can be applied via the CSS property "border" or "border-color".

```
.border, #border, table{ border:4px solid
#A1816A }
```

If only the border color should be changed use the property `border-color`.

```
.border{ border-color:#A1816A }
```

If you want to add a box shadow in that color use:

Here you see how a box with a 4 pixel #A1816A colored shadow looks like.

```
.boxshadow{ -moz-box-shadow:4px 4px 4px  
4px #A1816A; -webkit-box-shadow:4px 4px  
4px 4px #A1816A; box-shadow:4px 4px 4px  
4px #A1816A }
```

Background

The CSS property to change the background color of an element to Hex A1816A is called "background". The background property can be set on classes, ids or directly on the HTML element.

```
.background, #background, body{  
background:#A1816A }
```

If only the background color should be changed can be used:

```
.background{ background-color:#A1816A }
```

This example shows the color as background, it is applied via the CSS property "background".

To optimize and compress your CSS code, you can use our [online CSS compressor and optimizer](#) based on csstidy. If you want to create a linear or radial gradient as background or border, check our [CSS Gradient Generator](#).

Hey! You found this booklet interesting? Support Converting Colors with the new Membership Option!

The pro membership hides all ads, plus gives you double the colors in the color bucket, and more awesome pro features!

[Learn more, Memberships starting at \\$2.50/m!](#)

**Follow me
on Twitter!**

@ConvertingColor