

Converting Colors

Hex(A18261)

Have a look what the booklet for
Hex(A18261) contains.

Hex(A18261)	3
<i>Conversions</i>	4
<i>Details</i>	6
<i>Harmonies</i>	11
<i>Previews</i>	23
<i>Color Blindness Simulation</i>	26
<i>CSS Examples</i>	29

Color

Hex(A18261)

Conversions

Conversions Part 1

Format	Color
Hex	A18261
RGB	161, 130, 97
RGB Percent	63%, 51%, 38%
CMY	0.3686, 0.4902, 0.6196
CMYK	0.00, 0.19, 0.40, 0.37
HSL	31°, 25%, 51%
HSV	31°, 40%, 63%
XYZ	24.8382, 24.4054, 14.7109
YIQ	135.5070, 29.0690, -3.6910

Conversions

Conversions Part 2

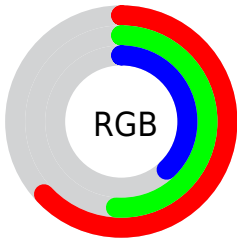
Format	Color
RYB	157, 161, 97
Decimal	10584673
CIELab	56.49, 7.20, 22.36
CIElCh	56, 23.491, 72.142
Yxy	24.4054, 0.3884, 0.3816
Android (android.graphics.Color)	4288774753 (0xFFA18261)
YUV	135.5070, -18.9840, 22.3574
Hunter-Lab	49.4018, 3.2930, 16.9259

Details

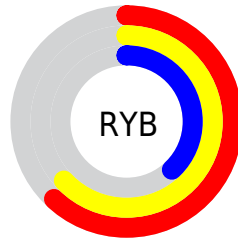
The Hex color **A18261** is a dark color, and the websafe version is hex **CC9966**. A complement of this color would be **6180A1**, and the grayscale version is **888888**.

A 20% lighter version of the original color is **D9B794**, and **6C5132** is the 20% darker color. If you saturate the color by 10%, you get **A17A51**, and if you desaturate by 10%, it is **A18A71**.

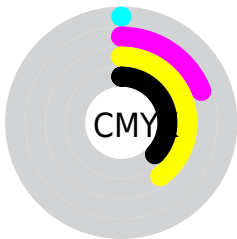
Distribution



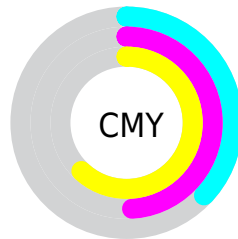
- Red (63%)
- Green (51%)
- Blue (38%)



- Red (62%)
- Yellow (63%)
- Blue (38%)



- Cyan (0%)
- Magenta (19%)
- Yellow (40%)
- Black (37%)



- Cyan (37%)
- Magenta (49%)
- Yellow (62%)

Brightness & Saturation Gradients

These gradients show how the Hex color A18261 changes by changing the brightness by 10 percent. The first figure shows a shift by +10% for each color and the second figure -10%.

Similar to the brightness gradients but the following saturation gradients show a change of the Hex color A18261 by changing the saturation by 10% instead.

 A18261

 A18261

FFFFFF

 866949

 D9B794

 6C5132

 F6D2AF

 533A1C

 FFEFCA

 3A2404

 FFFFE6

 231000

 000000

 A18261

 A18261

 A17A51

 A18A71

 A17241

 A19281

 A16B31

 A19991

 A16321

 A1A1A1

 A15B10

 A1A9B2

 A15300

 A1B1C2

 A1B9D2

 A1C0E2

 A1C8F2

Harmonies

Analogous

The Analogous color harmony consists of three colors that are next to each other on the color wheel.



AE7C6D



A18261



8E895F

Triad

The Triadic color harmony groups three colors that are evenly spaced from another and form a triangle on the color wheel.



A18261



4D938F



957FA6

Complementary

The Complementary color scheme is a pair of colors which are on the opposite of each other on the color wheel.



A18261



6180A1

Split Complementary

Split-complementary colors differ from the complementary color scheme. The scheme consists of three colors, the original color and two neighbors of the complement color.



7A87AF



A18261



4A91A2

Square

The Square scheme is like the rectangle color scheme, but the four colors are evenly spaced on the color wheel.



A18261



5F927A



5D8DAE



A87A95

Rectangle

The Rectangle color scheme consists of four colors that form a rectangle on the color wheel.



A18261



7F8D64



5D8DAE



8C82AA

Sweetspot

The Sweet Spot groups the original color and five complimentary colors.



A18261



D1C5B8



A16181



69615A



E8E8E8



696969

Same Dimension

The Same Dimension uses a secret algorithm to generate beautiful new colors.



A18261



D1A06D



A1A161



524E49



914B00



120900

Inverse Universe

The Inverse Universe completely reimagines the original color for something new.



6180A1



6D9DD1



6161A1



494D52



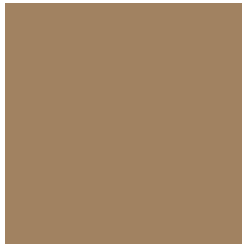
004691



000912

Previews

White Background



This preview shows how the Hex color A18261 looks on a white background.

Color Contrast Check

Large Text (above 18pt) WCAG AA ✓ Pass

Any Text WCAG AA × Fail

Large Text (above 18pt) WCAG AAA × Fail

Any Text WCAG AAA × Fail

Black Background



Color Contrast Check

Large Text (above 18pt) WCAG AA ✓ Pass

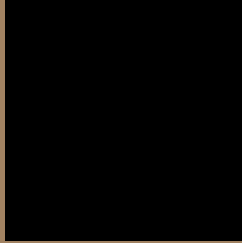
Any Text WCAG AA ✓ Pass

Large Text (above 18pt) WCAG AAA ✓ Pass

Any Text WCAG AAA × Fail

If you want to check with other color combinations, try the [Color Contrast Checker](#).

Hex A18261 Background



This preview shows how black text looks on a background with the Hex color A18261.



This preview shows how white text looks on a background with the Hex color A18261.

Color Blindness Simulation

Color vision deficiency is a very complex topic, and I could not describe the different causes any better than Wikipedia does, so if you want to learn more, you should check out their [article about color blindness](#).


Dichromacy



Original Color
A18261

Protanopia
928863

Deuteranopia
A18261



Tritanopia
A57D87

Trichromacy



Original Color
A18261

Protanomaly
978662

Deuteranomaly
A18261

Tritanomaly
A47F79

Monochromacy



Original Color
A18261

Achromatopsia
888888

Achromatomaly
91867A

CSS Examples

Text

The CSS property to change the color of the text to Hex A18261 is called "color". The color property can be set on classes, ids or directly on the HTML element.

This example shows how text in the color #A18261 looks like.

```
.text, #text, p{  
    color:#A18261  
}
```

If you want to add a text shadow in that color use the text-shadow property, you can generate a text shadow directly with our [CSS Text Shadow Generator](#).

Here you see how black text with a 4 pixel #A18261 colored shadow looks like.

```
.shadow{ text-shadow: 4px 4px 2px #A18261
}
```

Border

The CSS property to change the border of an element to Hex A18261 is called "border". The border property can be set on classes, ids or directly on the HTML element.

This example shows the color as border, it can be applied via the CSS property "border" or "border-color".

```
.border, #border, table{ border:4px solid
#A18261 }
```

If only the border color should be changed use the property `border-color`.

```
.border{ border-color:#A18261 }
```

If you want to add a box shadow in that color use:

Here you see how a box with a 4 pixel #A18261 colored shadow looks like.

```
.boxshadow{ -moz-box-shadow:4px 4px 4px  
4px #A18261; -webkit-box-shadow:4px 4px  
4px 4px #A18261; box-shadow:4px 4px 4px  
4px #A18261 }
```

Background

The CSS property to change the background color of an element to Hex A18261 is called "background". The background property can be set on classes, ids or directly on the HTML element.

```
.background, #background, body{  
background:#A18261 }
```

If only the background color should be changed can be used:

```
.background{ background-color:#A18261 }
```

This example shows the color as background, it is applied via the CSS property "background".

To optimize and compress your CSS code, you can use our [online CSS compressor and optimizer](#) based on csstidy. If you want to create a linear or radial gradient as background or border, check our [CSS Gradient Generator](#).

Hey! You found this booklet interesting? Support Converting Colors with the new Membership Option!

The pro membership hides all ads, plus gives you double the colors in the color bucket, and more awesome pro features!

[Learn more, Memberships starting at \\$2.50/m!](#)

**Follow me
on Twitter!**

@ConvertingColor