

Converting Colors

Hex(A18367)

Have a look what the booklet for
Hex(A18367) contains.

Hex(A18367)	3
<i>Conversions</i>	4
<i>Details</i>	6
<i>Harmonies</i>	11
<i>Previews</i>	23
<i>Color Blindness Simulation</i>	26
<i>CSS Examples</i>	29

Color

Hex(A18367)

Conversions

Conversions Part 1

Format	Color
Hex	A18367
RGB	161, 131, 103
RGB Percent	63%, 51%, 40%
CMY	0.3686, 0.4863, 0.5961
CMYK	0.00, 0.19, 0.36, 0.37
HSL	29°, 24%, 52%
HSV	29°, 36%, 63%
XYZ	25.2624, 24.7889, 16.2852
YIQ	136.7780, 26.8680, -2.3480

Conversions

Conversions Part 2

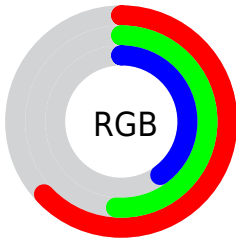
Format	Color
R_{YB}	161, 157, 103
Decimal	10584935
CIE _{Lab}	56.87, 7.38, 19.47
CIE _{LCh}	57, 20.826, 69.232
Yxy	24.7889, 0.3808, 0.3737
Android (android.graphics.Color)	4288775015 (0xFFFA18367)
YUV	136.7780, -16.6526, 21.2427
Hunter-Lab	49.7885, 3.4401, 15.4589

Details

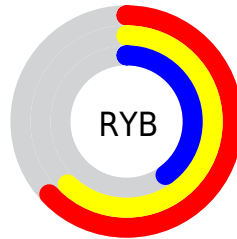
The Hex color **A18367** is a dark color, and the websafe version is hex **999966**. A complement of this color would be **6785A1**, and the grayscale version is **898989**.

A 20% lighter version of the original color is **D9B89A**, and **6C5238** is the 20% darker color. If you saturate the color by 10%, you get **A17B57**, and if you desaturate by 10%, it is **A18B77**.

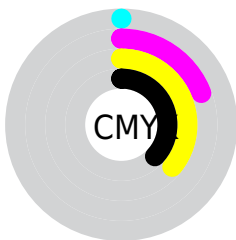
Distribution



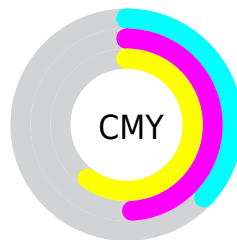
- Red (63%)
- Green (51%)
- Blue (40%)



- Red (63%)
- Yellow (62%)
- Blue (40%)



- Cyan (0%)
- Magenta (19%)
- Yellow (36%)
- Black (37%)



- Cyan (37%)
- Magenta (49%)
- Yellow (60%)

Brightness & Saturation Gradients

These gradients show how the Hex color A18367 changes by changing the brightness by 10 percent. The first figure shows a shift by +10% for each color and the second figure -10%.

Similar to the brightness gradients but the following saturation gradients show a change of the Hex color A18367 by changing the saturation by 10% instead.



A18367



A18367

FFFFFF



866A4F



D9B89A



6C5238



F6D4B5



533B22



FFF0D1



3B250D



FFFFED



241100



000000



A18367



A18367



A17B57



A18B77



A17247



A19487

 A16A37

 A19C97

 A16227

 A1A4A7

 A15917

 A1ADB8

 A15106

 A1B5C8

 A14E00

 A1BDD8

 A1C6E8

 A1CEF8

Harmonies

Analogous

The Analogous color harmony consists of three colors that are next to each other on the color wheel.



AB7E72



A18367



908965

Triad

The Triadic color harmony groups three colors that are evenly spaced from another and form a triangle on the color wheel.



A18367



58938E



9282A5

Complementary

The Complementary color scheme is a pair of colors which are on the opposite of each other on the color wheel.



A18367



6785A1

Split Complementary

Split-complementary colors differ from the complementary color scheme. The scheme consists of three colors, the original color and two neighbors of the complement color.



7A88AC



A18367



54919F

Square

The Square scheme is like the rectangle color scheme, but the four colors are evenly spaced on the color wheel.



A18367



67927B



628EAA



A47D96

Rectangle

The Rectangle color scheme consists of four colors that form a rectangle on the color wheel.



A18367



838D69



628EAA



8B84A8

Sweetspot

The Sweet Spot groups the original color and five complimentary colors.



A18367



D1C5BA



A16786



69625B



E8E8E8



696969

Same Dimension

The Same Dimension uses a secret algorithm to generate beautiful new colors.



A18367



D1A377



A19F67



524D49



914600



120900

Inverse Universe

The Inverse Universe completely reimagines the original color for something new.



6785A1



77A6D1



6769A1



494E52



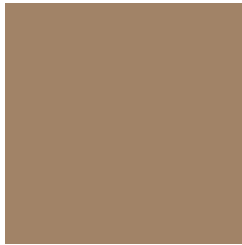
004B91



000912

Previews

White Background



This preview shows how the Hex color A18367 looks on a white background.

Color Contrast Check

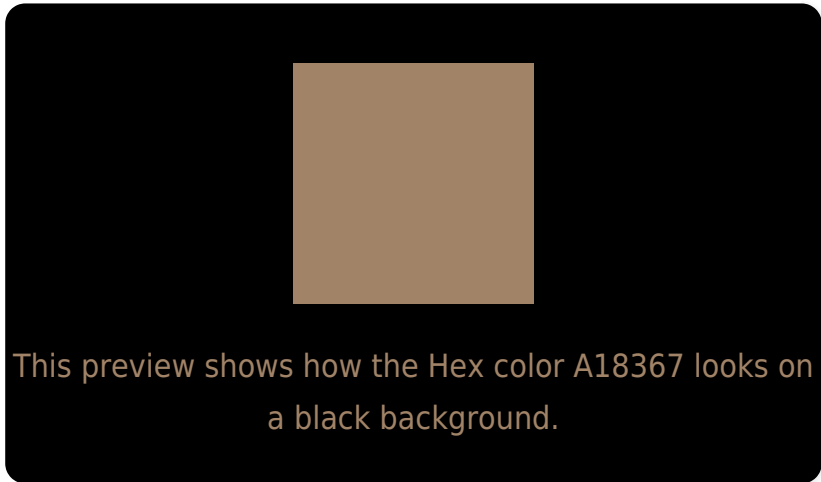
Large Text (above 18pt) WCAG AA ✓ Pass

Any Text WCAG AA × Fail

Large Text (above 18pt) WCAG AAA × Fail

Any Text WCAG AAA × Fail

Black Background



Color Contrast Check

Large Text (above 18pt) WCAG AA ✓ Pass

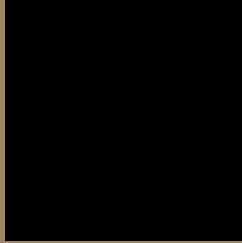
Any Text WCAG AA ✓ Pass

Large Text (above 18pt) WCAG AAA ✓ Pass

Any Text WCAG AAA × Fail

If you want to check with other color combinations, try the [Color Contrast Checker](#).

Hex A18367 Background



This preview shows how black text looks on a background with the Hex color A18367.



This preview shows how white text looks on a background with the Hex color A18367.

Color Blindness Simulation

Color vision deficiency is a very complex topic, and I could not describe the different causes any better than Wikipedia does, so if you want to learn more, you should check out their [article about color blindness](#).

Dichromacy



Original Color
A18367

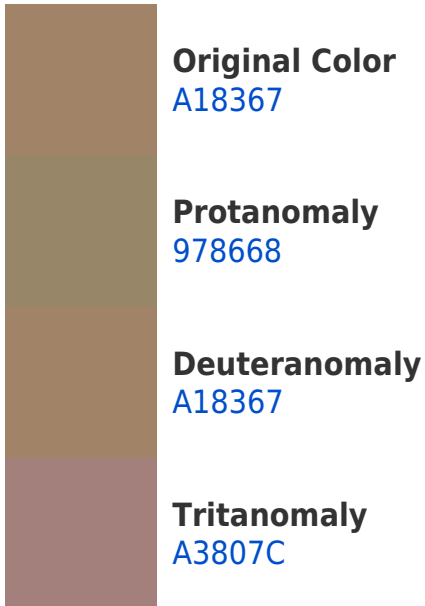
Protanopia
928869

Deuteranopia
A18367

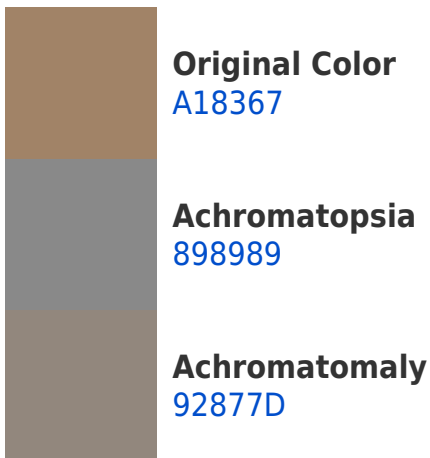


Tritanopia
A47E88

Trichromacy



Monochromacy



CSS Examples

Text

The CSS property to change the color of the text to Hex A18367 is called "color". The color property can be set on classes, ids or directly on the HTML element.

This example shows how text in the color #A18367 looks like.

```
.text, #text, p{  
    color:#A18367  
}
```

If you want to add a text shadow in that color use the text-shadow property, you can generate a text shadow directly with our [CSS Text Shadow Generator](#).

Here you see how black text with a 4 pixel #A18367 colored shadow looks like.

```
.shadow{ text-shadow: 4px 4px 2px #A18367
}
```

Border

The CSS property to change the border of an element to Hex A18367 is called "border". The border property can be set on classes, ids or directly on the HTML element.

This example shows the color as border, it can be applied via the CSS property "border" or "border-color".

```
.border, #border, table{ border:4px solid
#A18367 }
```

If only the border color should be changed use the property `border-color`.

```
.border{ border-color:#A18367 }
```

If you want to add a box shadow in that color use:

Here you see how a box with a 4 pixel #A18367 colored shadow looks like.

```
.boxshadow{ -moz-box-shadow:4px 4px 4px  
4px #A18367; -webkit-box-shadow:4px 4px  
4px 4px #A18367; box-shadow:4px 4px 4px  
4px #A18367 }
```

Background

The CSS property to change the background color of an element to Hex A18367 is called "background". The background property can be set on classes, ids or directly on the HTML element.

```
.background, #background, body{  
background:#A18367 }
```

If only the background color should be changed can be used:

```
.background{ background-color:#A18367 }
```

This example shows the color as background, it is applied via the CSS property "background".

To optimize and compress your CSS code, you can use our [online CSS compressor and optimizer](#) based on csstidy. If you want to create a linear or radial gradient as background or border, check our [CSS Gradient Generator](#).

Hey! You found this booklet interesting? Support Converting Colors with the new Membership Option!

The pro membership hides all ads, plus gives you double the colors in the color bucket, and more awesome pro features!

[Learn more, Memberships starting at \\$2.50/m!](#)

**Follow me
on Twitter!**

@ConvertingColor