

# Converting Colors

Hex(A18B7D)

Have a look what the booklet for  
Hex(A18B7D) contains.

<b>Hex(A18B7D)</b> .....	3
<b><i>Conversions</i></b> .....	4
<b><i>Details</i></b> .....	6
<b><i>Harmonies</i></b> .....	11
<b><i>Previews</i></b> .....	23
<b><i>Color Blindness Simulation</i></b> .....	26
<b><i>CSS Examples</i></b> .....	29

# Color

**Hex(A18B7D)**

# Conversions

## Conversions Part 1

Format	Color
Hex	A18B7D
RGB	161, 139, 125
RGB Percent	63%, 55%, 49%
CMY	0.3686, 0.4549, 0.5098
CMYK	0.00, 0.14, 0.22, 0.37
HSL	23°, 16%, 56%
HSV	23°, 22%, 63%
XYZ	27.6322, 27.5230, 23.2581
YIQ	143.9820, 17.6060, 0.3100

# Conversions

## Conversions Part 2

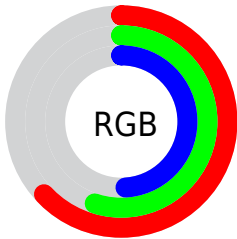
<b>Format</b>	<b>Color</b>
<b>R<sub>YB</sub></b>	161, 148, 125
Decimal	10587005
CIE <sub>Lab</sub>	59.46, 5.99, 10.54
CIE <sub>LCh</sub>	59, 12.124, 60.385
Yxy	27.5230, 0.3524, 0.3510
Android (android.graphics.Color)	4288777085 (0xFFA18B7D)
YUV	143.9820, -9.3581, 14.9248
Hunter-Lab	52.4623, 2.2079, 10.4386

# Details

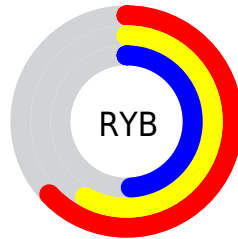
The Hex color **A18B7D** is a dark color, and the websafe version is hex **999999**. A complement of this color would be **7D93A1**, and the grayscale version is **909090**.

A 20% lighter version of the original color is **D8C0B2**, and **6D594C** is the 20% darker color. If you saturate the color by 10%, you get **A1816D**, and if you desaturate by 10%, it is **A1958D**.

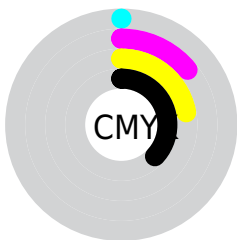
# Distribution



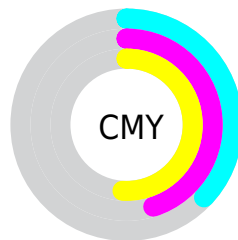
- Red (63%)
- Green (55%)
- Blue (49%)



- Red (63%)
- Yellow (58%)
- Blue (49%)



- Cyan (0%)
- Magenta (14%)
- Yellow (22%)
- Black (37%)



- Cyan (37%)
- Magenta (45%)
- Yellow (51%)

# Brightness & Saturation Gradients

These gradients show how the Hex color A18B7D changes by changing the brightness by 10 percent. The first figure shows a shift by +10% for each color and the second figure -10%.

Similar to the brightness gradients but the following saturation gradients show a change of the Hex color A18B7D by changing the saturation by 10% instead.





A18B7D



A18B7D

FFFFFF



877264



D8C0B2



6D594C



F5DCCD



544235



FFF9E9



3D2C20



271709



090000



000000



A18B7D



A18B7D



A1816D



A1958D

 A1775D

 A19F9D

 A16D4D

 A1A9AD

 A1643D

 A1B2BD

 A15A2D

 A1BCCE

 A1501C

 A1C6DE

 A1460C

 A1D0EE

 A13F00

 A1DAFE

 A1E4FF

# Harmonies

## Analogous

The Analogous color harmony consists of three colors that are next to each other on the color wheel.



A68985



A18B7D



988E7A

# Triad

The Triadic color harmony groups three colors that are evenly spaced from another and form a triangle on the color wheel.



A18B7D



77958F



918CA1

# Complementary

The Complementary color scheme is a pair of colors which are on the opposite of each other on the color wheel.



A18B7D



7D93A1

# Split Complementary

Split-complementary colors differ from the complementary color scheme. The scheme consists of three colors, the original color and two neighbors of the complement color.



8490A4



A18B7D



749599

# Square

The Square scheme is like the rectangle color scheme, but the four colors are evenly spaced on the color wheel.



A18B7D



809484



7993A1



9D899A

# Rectangle

The Rectangle color scheme consists of four colors that form a rectangle on the color wheel.



A18B7D



90917B



7993A1



8D8EA3



# Sweetspot

The Sweet Spot groups the original color and five complimentary colors.



A18B7D



D1C8C2



A17D93



696360



E8E8E8



696969



# Same Dimension

The Same Dimension uses a secret algorithm to generate beautiful new colors.



A18B7D



D1AF99



A19D7D



524D49



913900



120700



# Inverse Universe

The Inverse Universe completely reimagines the original color for something new.



7D93A1



99BBD1



7D81A1



494E52



005991

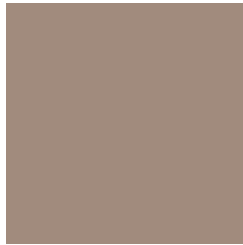


000B12



# Previews

## White Background



This preview shows how the Hex color A18B7D looks on a white background.

## Color Contrast Check

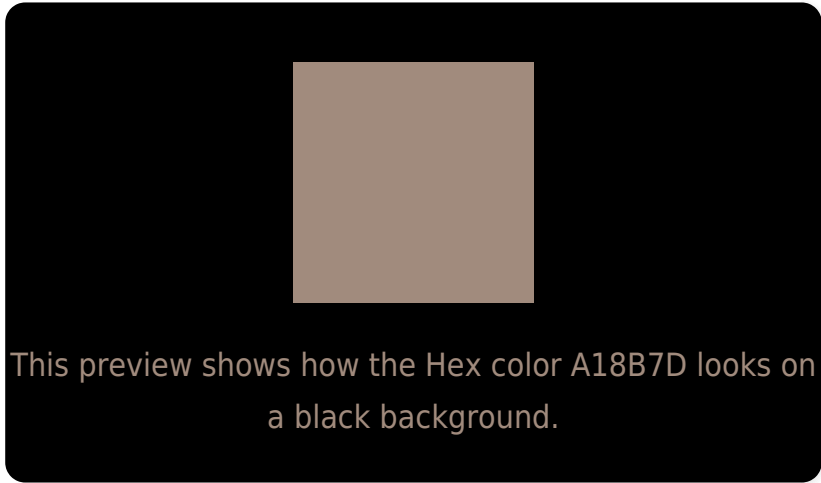
Large Text (above 18pt) WCAG AA ✓ Pass

Any Text WCAG AA × Fail

Large Text (above 18pt) WCAG AAA × Fail

Any Text WCAG AAA × Fail

# Black Background



## Color Contrast Check

Large Text (above 18pt) WCAG AA ✓ Pass

Any Text WCAG AA ✓ Pass

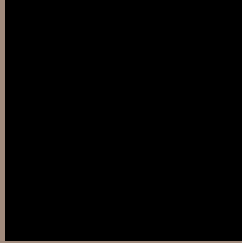
Large Text (above 18pt) WCAG AAA ✓ Pass

Any Text WCAG AAA × Fail

If you want to check with other color combinations, try the [Color Contrast Checker](#).



## Hex A18B7D Background



This preview shows how black text looks on a background with the Hex color A18B7D.



This preview shows how white text looks on a background with the Hex color A18B7D.

# Color Blindness Simulation

Color vision deficiency is a very complex topic, and I could not describe the different causes any better than Wikipedia does, so if you want to learn more, you should check out their [article about color blindness](#).

## Dichromacy



**Original Color**  
A18B7D

**Protanopia**  
968F7F

**Deuteranopia**  
A48A7D



**Tritanopia**  
A48892

# Trichromacy



**Original Color**  
A18B7D

**Protanomaly**  
9A8E7E

**Deuteranomaly**  
A38A7D

**Tritanomaly**  
A3898A

# Monochromacy



**Original Color**  
A18B7D

**Achromatopsia**  
909090

**Achromatomaly**  
968E89

# CSS Examples

## Text

The CSS property to change the color of the text to Hex A18B7D is called "color". The color property can be set on classes, ids or directly on the HTML element.

This example shows how text in the color #A18B7D looks like.

```
.text, #text, p{  
    color:#A18B7D  
}
```

If you want to add a text shadow in that color use the text-shadow property, you can generate a text shadow directly with our [CSS Text Shadow Generator](#).

Here you see how black text with a 4 pixel #A18B7D colored shadow looks like.

```
.shadow{ text-shadow: 4px 4px 2px #A18B7D
}
```

## Border

The CSS property to change the border of an element to Hex A18B7D is called "border". The border property can be set on classes, ids or directly on the HTML element.

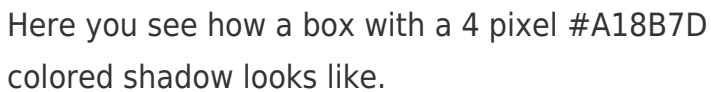
This example shows the color as border, it can be applied via the CSS property "border" or "border-color".

```
.border, #border, table{ border:4px solid
#A18B7D }
```

If only the border color should be changed use the property `border-color`.

```
.border{ border-color:#A18B7D }
```

If you want to add a box shadow in that color use:



Here you see how a box with a 4 pixel #A18B7D colored shadow looks like.

```
.boxshadow{ -moz-box-shadow:4px 4px 4px  
4px #A18B7D; -webkit-box-shadow:4px 4px  
4px 4px #A18B7D; box-shadow:4px 4px 4px  
4px #A18B7D }
```

# Background

The CSS property to change the background color of an element to Hex A18B7D is called "background". The background property can be set on classes, ids or directly on the HTML element.

```
.background, #background, body{  
background:#A18B7D }
```

If only the background color should be changed can be used:

```
.background{ background-color:#A18B7D }
```

This example shows the color as background, it is applied via the CSS property "background".

To optimize and compress your CSS code, you can use our [online CSS compressor and optimizer](#) based on csstidy. If you want to create a linear or radial gradient as background or border, check our [CSS Gradient Generator](#).



Hey! You found this booklet interesting? Support Converting Colors with the new Membership Option!

The pro membership hides all ads, plus gives you double the colors in the color bucket, and more awesome pro features!

**[Learn more, Memberships starting at \\$2.50/m!](#)**

**Follow me  
on Twitter!**

@ConvertingColor