

# Converting Colors

Hex(A2475B)

Have a look what the booklet for  
Hex(A2475B) contains.

<b>Hex(A2475B)</b> .....	3
<b><i>Conversions</i></b> .....	4
<b><i>Details</i></b> .....	6
<b><i>Harmonies</i></b> .....	11
<b><i>Previews</i></b> .....	23
<b><i>Color Blindness Simulation</i></b> .....	26
<b><i>CSS Examples</i></b> .....	29

# Color

**Hex(A2475B)**

# Conversions

## Conversions Part 1

<b>Format</b>	<b>Color</b>
Hex	A2475B
RGB	162, 71, 91
RGB Percent	64%, 28%, 36%
CMY	0.3647, 0.7216, 0.6431
CMYK	0.00, 0.56, 0.44, 0.36
HSL	347°, 39%, 46%
HSV	347°, 56%, 64%
XYZ	19.0419, 12.9432, 11.3922
YIQ	100.4890, 47.8160, 25.5120

# Conversions

## Conversions Part 2

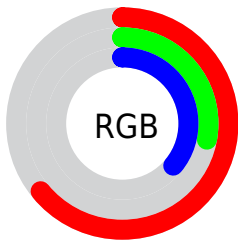
<b>Format</b>	<b>Color</b>
<b>R<sub>YB</sub></b>	162, 71, 91
Decimal	10635099
CIE <sub>Lab</sub>	42.68, 39.65, 6.93
CIE <sub>LCh</sub>	43, 40.248, 9.909
Yxy	12.9432, 0.4390, 0.2984
Android (android.graphics.Color)	4288825179 (0xFFA2475B)
YUV	100.4890, -4.6781, 53.9451
Hunter-Lab	35.9766, 31.5180, 6.4092

# Details

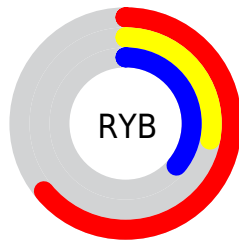
The Hex color **A2475B** is a dark color, and the websafe version is hex **993366**. A complement of this color would be **47A28E**, and the grayscale version is **656565**.

A 20% lighter version of the original color is **DC7B8D**, and **6A122E** is the 20% darker color. If you saturate the color by 10%, you get **A2374E**, and if you desaturate by 10%, it is **A25768**.

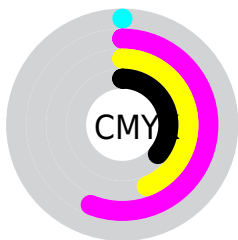
# Distribution



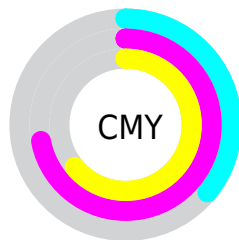
- Red (64%)
- Green (28%)
- Blue (36%)



- Red (64%)
- Yellow (28%)
- Blue (36%)



- Cyan (0%)
- Magenta (56%)
- Yellow (44%)
- Black (36%)



- Cyan (36%)
- Magenta (72%)
- Yellow (64%)

# Brightness & Saturation Gradients

These gradients show how the Hex color A2475B changes by changing the brightness by 10 percent. The first figure shows a shift by +10% for each color and the second figure -10%.

Similar to the brightness gradients but the following saturation gradients show a change of the Hex color A2475B by changing the saturation by 10% instead.



 A2475B

 A2475B

FFFFFF

 862E44

 DC7B8D

 6A122E

 FA95A7

 4F0019

 FFB1C2

 370000

 FFCDDDE

 130000

 FFE9FB

 000000

 A2475B

 A2475B

 A2374E

 A25768

 A22742

 A26774

 A21635

 A27881

 A20628

 A2888E

 A20024

 A2989A

 A2A8A7

 A2B8B3

 A2C9C0

 A2D9CD

# Harmonies

## Analogous

The Analogous color harmony consists of three colors that are next to each other on the color wheel.



964B7C



A2475B



9D4E3C

# Triad

The Triadic color harmony groups three colors that are evenly spaced from another and form a triangle on the color wheel.



A2475B



496F2F



006EA3

# Complementary

The Complementary color scheme is a pair of colors which are on the opposite of each other on the color wheel.



A2475B



47A28E

# Split Complementary

Split-complementary colors differ from the complementary color scheme. The scheme consists of three colors, the original color and two neighbors of the complement color.



00748F



A2475B



04744D

# Square

The Square scheme is like the rectangle color scheme, but the four colors are evenly spaced on the color wheel.



A2475B



6D671F



00756F



3B65A6

# Rectangle

The Rectangle color scheme consists of four colors that form a rectangle on the color wheel.



A2475B



91572B



00756F



00719E



# Sweetspot

The Sweet Spot groups the original color and five complimentary colors.



A2475B



D4B0B8



8D47A2



6B565A



EBEBEB



6B6B6B



# Same Dimension

The Same Dimension uses a secret algorithm to generate beautiful new colors.



A2475B



D44665



A25F47



52494B



910020



120004



# Inverse Universe

The Inverse Universe completely reimagines the original color for something new.



A2475B



D44665



478AA2



52494B



910020

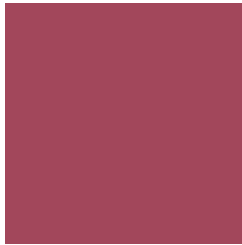


120004



# Previews

## White Background



This preview shows how the Hex color A2475B looks on a white background.

## Color Contrast Check

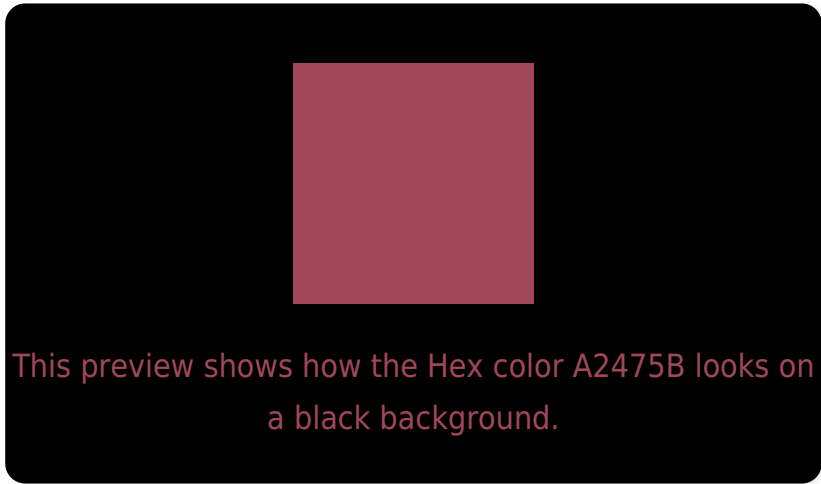
Large Text (above 18pt) WCAG AA ✓ Pass

Any Text WCAG AA ✓ Pass

Large Text (above 18pt) WCAG AAA ✓ Pass

Any Text WCAG AAA × Fail

# Black Background



## Color Contrast Check

Large Text (above 18pt) WCAG AA ✓ Pass

Any Text WCAG AA × Fail

Large Text (above 18pt) WCAG AAA × Fail

Any Text WCAG AAA × Fail

If you want to check with other color combinations, try the [Color Contrast Checker](#).



## Hex A2475B Background



This preview shows how black text looks on a background with the Hex color A2475B.

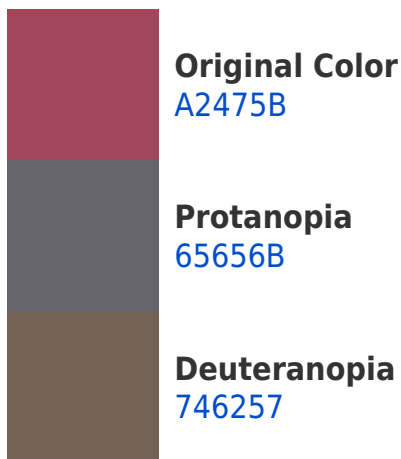



This preview shows how white text looks on a background with the Hex color A2475B.

# Color Blindness Simulation

Color vision deficiency is a very complex topic, and I could not describe the different causes any better than Wikipedia does, so if you want to learn more, you should check out their [article about color blindness](#).

## Dichromacy





**Tritanopia**  
A1494E

# Trichromacy



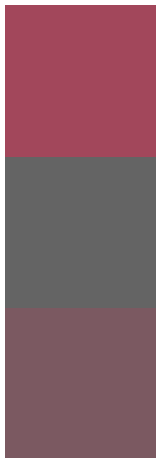
**Original Color**  
A2475B

**Protanomaly**  
7B5A65

**Deuteranomaly**  
855858

**Tritanomaly**  
A14853

# Monochromacy



**Original Color**  
A2475B

**Achromatopsia**  
646464

**Achromatomaly**  
7B5961

# CSS Examples

## Text

The CSS property to change the color of the text to Hex A2475B is called "color". The color property can be set on classes, ids or directly on the HTML element.

This example shows how text in the color #A2475B looks like.

```
.text, #text, p{  
    color:#A2475B  
}
```

If you want to add a text shadow in that color use the text-shadow property, you can generate a text shadow directly with our [CSS Text Shadow Generator](#).

Here you see how black text with a 4 pixel #A2475B colored shadow looks like.

```
.shadow{ text-shadow: 4px 4px 2px #A2475B
}
```

## Border

The CSS property to change the border of an element to Hex A2475B is called "border". The border property can be set on classes, ids or directly on the HTML element.

This example shows the color as border, it can be applied via the CSS property "border" or "border-color".

```
.border, #border, table{ border:4px solid
#A2475B }
```

If only the border color should be changed use the property border-color.

```
.border{ border-color:#A2475B }
```

If you want to add a box shadow in that color use:

Here you see how a box with a 4 pixel #A2475B colored shadow looks like.

```
.boxshadow{ -moz-box-shadow:4px 4px 4px  
4px #A2475B; -webkit-box-shadow:4px 4px  
4px 4px #A2475B; box-shadow:4px 4px 4px  
4px #A2475B }
```

# Background

The CSS property to change the background color of an element to Hex A2475B is called "background". The background property can be set on classes, ids or directly on the HTML element.

```
.background, #background, body{  
background:#A2475B }
```

If only the background color should be changed can be used:

```
.background{ background-color:#A2475B }
```

This example shows the color as background, it is applied via the CSS property "background".

To optimize and compress your CSS code, you can use our [online CSS compressor and optimizer](#) based on csstidy. If you want to create a linear or radial gradient as background or border, check our [CSS Gradient Generator](#).



Hey! You found this booklet interesting? Support Converting Colors with the new Membership Option!

The pro membership hides all ads, plus gives you double the colors in the color bucket, and more awesome pro features!

**[Learn more, Memberships starting at \\$2.50/m!](#)**

**Follow me  
on Twitter!**

@ConvertingColor