

Converting Colors

Hex(A27353)

Have a look what the booklet for
Hex(A27353) contains.

Hex(A27353)	3
<i>Conversions</i>	4
<i>Details</i>	6
<i>Harmonies</i>	11
<i>Previews</i>	23
<i>Color Blindness Simulation</i>	26
<i>CSS Examples</i>	29

Color

Hex(A27353)

Conversions

Conversions Part 1

Format	Color
Hex	A27353
RGB	162, 115, 83
RGB Percent	64%, 45%, 33%
CMY	0.3647, 0.5490, 0.6745
CMYK	0.00, 0.29, 0.49, 0.36
HSL	24°, 32%, 48%
HSV	24°, 49%, 64%
XYZ	22.5924, 20.5674, 10.9628
YIQ	125.4050, 38.2840, 0.0120

Conversions

Conversions Part 2

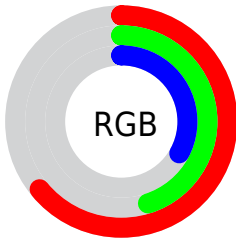
Format	Color
R_{YB}	162, 137, 83
Decimal	10646355
CIE _{Lab}	52.47, 14.58, 25.01
CIE _{LCh}	52, 28.955, 59.754
Yxy	20.5674, 0.4174, 0.3800
Android (android.graphics.Color)	4288836435 (0xFFA27353)
YUV	125.4050, -20.9057, 32.0938
Hunter-Lab	45.3513, 9.5575, 17.4137

Details

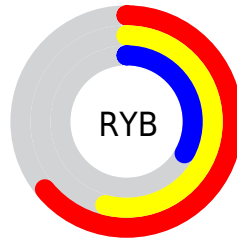
The Hex color **A27353** is a dark color, and the websafe version is hex **996633**. A complement of this color would be **5382A2**, and the grayscale version is **7E7E7E**.

A 20% lighter version of the original color is **DBA785**, and **6C4325** is the 20% darker color. If you saturate the color by 10%, you get **A26943**, and if you desaturate by 10%, it is **A27D63**.

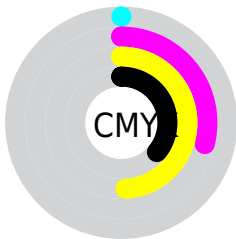
Distribution



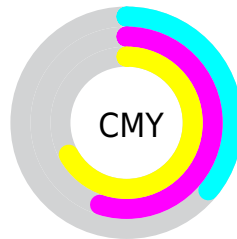
- Red (64%)
- Green (45%)
- Blue (33%)



- Red (64%)
- Yellow (54%)
- Blue (33%)



- Cyan (0%)
- Magenta (29%)
- Yellow (49%)
- Black (36%)



- Cyan (36%)
- Magenta (55%)
- Yellow (67%)

Brightness & Saturation Gradients

These gradients show how the Hex color A27353 changes by changing the brightness by 10 percent. The first figure shows a shift by +10% for each color and the second figure -10%.

Similar to the brightness gradients but the following saturation gradients show a change of the Hex color A27353 by changing the saturation by 10% instead.

 A27353

 A27353

FFFFFF

 875A3C

 DBA785

 6C4325

 F8C29F

 522C10

 FFDEBA

 391700

 FFFBD6

 220000

 FFFFF2

 000000

 A27353

 A27353

 A26943

 A27D63

 A26033

 A28673

 A25622

 A29084

 A24C12

 A29A94

 A24302

 A2A3A4

 A24200

 A2ADB4

 A2B6C4

 A2C0D5

 A2CAE5

Harmonies

Analogous

The Analogous color harmony consists of three colors that are next to each other on the color wheel.



AD6C66



A27353



8E7C4B

Triad

The Triadic color harmony groups three colors that are evenly spaced from another and form a triangle on the color wheel.



A27353



368A7C



8077A8

Complementary

The Complementary color scheme is a pair of colors which are on the opposite of each other on the color wheel.



A27353



5382A2

Split Complementary

Split-complementary colors differ from the complementary color scheme. The scheme consists of three colors, the original color and two neighbors of the complement color.



5980AF



A27353



1B8A95

Square

The Square scheme is like the rectangle color scheme, but the four colors are evenly spaced on the color wheel.



A27353



578863



3086A7



9C6E97

Rectangle

The Rectangle color scheme consists of four colors that form a rectangle on the color wheel.



A27353



7D814E



3086A7



747AAC

Sweetspot

The Sweet Spot groups the original color and five complimentary colors.



A27353



D4C1B4



A25382



6B6058



EBEBEB



6B6B6B

Same Dimension

The Same Dimension uses a secret algorithm to generate beautiful new colors.



A27353



D48957



A29A53



524D49



913B00



120700

Inverse Universe

The Inverse Universe completely reimagines the original color for something new.



5382A2



57A1D4



535BA2



494E52



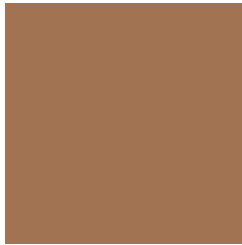
005691



000B12

Previews

White Background



This preview shows how the Hex color A27353 looks on a white background.

Color Contrast Check

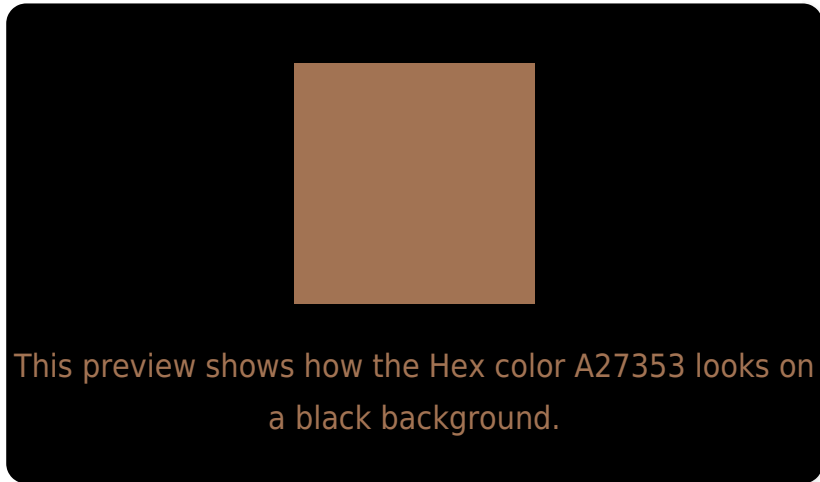
Large Text (above 18pt) WCAG AA ✓ Pass

Any Text WCAG AA × Fail

Large Text (above 18pt) WCAG AAA × Fail

Any Text WCAG AAA × Fail

Black Background



Color Contrast Check

Large Text (above 18pt) WCAG AA ✓ Pass

Any Text WCAG AA ✓ Pass

Large Text (above 18pt) WCAG AAA ✓ Pass

Any Text WCAG AAA × Fail

If you want to check with other color combinations, try the [Color Contrast Checker](#).

Hex A27353 Background



This preview shows how black text looks on a background with the Hex color A27353.



This preview shows how white text looks on a background with the Hex color A27353.

Color Blindness Simulation

Color vision deficiency is a very complex topic, and I could not describe the different causes any better than Wikipedia does, so if you want to learn more, you should check out their [article about color blindness](#).

Dichromacy



Original Color
A27353

Protanopia
887D57

Deuteranopia
977852



Tritanopia
A56E77

Trichromacy



Original Color
A27353

Protanomaly
917956

Deuteranomaly
9B7652

Tritanomaly
A4706A

Monochromacy



Original Color
A27353

Achromatopsia
7D7D7D

Achromatomaly
8A796E

CSS Examples

Text

The CSS property to change the color of the text to Hex A27353 is called "color". The color property can be set on classes, ids or directly on the HTML element.

This example shows how text in the color #A27353 looks like.

```
.text, #text, p{  
    color:#A27353  
}
```

If you want to add a text shadow in that color use the text-shadow property, you can generate a text shadow directly with our [CSS Text Shadow Generator](#).

Here you see how black text with a 4 pixel #A27353 colored shadow looks like.

```
.shadow{ text-shadow: 4px 4px 2px #A27353
}
```

Border

The CSS property to change the border of an element to Hex A27353 is called "border". The border property can be set on classes, ids or directly on the HTML element.

This example shows the color as border, it can be applied via the CSS property "border" or "border-color".

```
.border, #border, table{ border:4px solid
#A27353 }
```

If only the border color should be changed use the property `border-color`.

```
.border{ border-color:#A27353 }
```

If you want to add a box shadow in that color use:

Here you see how a box with a 4 pixel #A27353 colored shadow looks like.

```
.boxshadow{ -moz-box-shadow:4px 4px 4px  
4px #A27353; -webkit-box-shadow:4px 4px  
4px 4px #A27353; box-shadow:4px 4px 4px  
4px #A27353 }
```

Background

The CSS property to change the background color of an element to Hex A27353 is called "background". The background property can be set on classes, ids or directly on the HTML element.

```
.background, #background, body{  
background:#A27353 }
```

If only the background color should be changed can be used:

```
.background{ background-color:#A27353 }
```

This example shows the color as background, it is applied via the CSS property "background".

To optimize and compress your CSS code, you can use our [online CSS compressor and optimizer](#) based on csstidy. If you want to create a linear or radial gradient as background or border, check our [CSS Gradient Generator](#).

Hey! You found this booklet interesting? Support Converting Colors with the new Membership Option!

The pro membership hides all ads, plus gives you double the colors in the color bucket, and more awesome pro features!

[Learn more, Memberships starting at \\$2.50/m!](#)

**Follow me
on Twitter!**

@ConvertingColor