

# Converting Colors

Hex(A2826E)

Have a look what the booklet for  
Hex(A2826E) contains.

<b>Hex(A2826E)</b> .....	3
<b><i>Conversions</i></b> .....	4
<b><i>Details</i></b> .....	6
<b><i>Harmonies</i></b> .....	11
<b><i>Previews</i></b> .....	23
<b><i>Color Blindness Simulation</i></b> .....	26
<b><i>CSS Examples</i></b> .....	29

**Color**

**Hex(A2826E)**

# Conversions

## Conversions Part 1

<b>Format</b>	<b>Color</b>
Hex	A2826E
RGB	162, 130, 110
RGB Percent	64%, 51%, 43%
CMY	0.3647, 0.4902, 0.5686
CMYK	0.00, 0.20, 0.32, 0.36
HSL	23°, 22%, 53%
HSV	23°, 32%, 64%
XYZ	25.6974, 24.7724, 18.1790
YIQ	137.2880, 25.4920, 0.5640

# Conversions

## Conversions Part 2

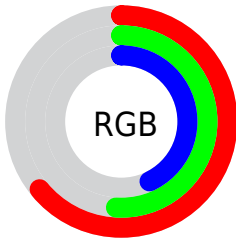
<b>Format</b>	<b>Color</b>
<b>R<sub>YB</sub></b>	162, 143, 110
Decimal	10650222
CIE <sub>Lab</sub>	56.85, 9.29, 15.48
CIE <sub>LCh</sub>	57, 18.053, 59.033
Yxy	24.7724, 0.3743, 0.3609
Android (android.graphics.Color)	4288840302 (0xFFA2826E)
YUV	137.2880, -13.4530, 21.6724
Hunter-Lab	49.7719, 5.0593, 13.1849

# Details

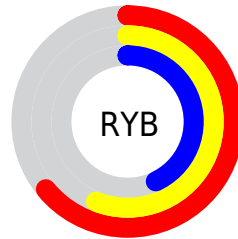
The Hex color **A2826E** is a dark color, and the websafe version is hex **996666**. A complement of this color would be **6E8EA2**, and the grayscale version is **898989**.

A 20% lighter version of the original color is **DAB7A2**, and **6D513E** is the 20% darker color. If you saturate the color by 10%, you get **A2785E**, and if you desaturate by 10%, it is **A28C7E**.

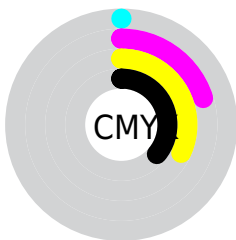
# Distribution



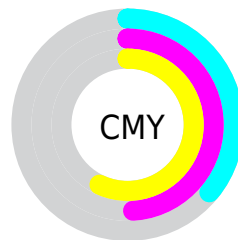
- Red (64%)
- Green (51%)
- Blue (43%)



- Red (64%)
- Yellow (56%)
- Blue (43%)



- Cyan (0%)
- Magenta (20%)
- Yellow (32%)
- Black (36%)



- Cyan (36%)
- Magenta (49%)
- Yellow (57%)

# Brightness & Saturation Gradients

These gradients show how the Hex color A2826E changes by changing the brightness by 10 percent. The first figure shows a shift by +10% for each color and the second figure -10%.

Similar to the brightness gradients but the following saturation gradients show a change of the Hex color A2826E by changing the saturation by 10% instead.



 A2826E

 A2826E

FFFFFF

 876956

 DAB7A2

 6D513E

 F6D3BD

 543A28

 FFEFD8

 3C2414

 FFFFF5

 261000

 000000

 A2826E

 A2826E

 A2785E

 A28C7E

 A26E4E

 A2968E

 A2643D

 A2A09F

 A25A2D

 A2AAAF

 A2501D

 A2B4BF

 A2460D

 A2BECF

 A23E00

 A2C8DF

 A2D2F0

 A2DCFF

# Harmonies

## Analogous

The Analogous color harmony consists of three colors that are next to each other on the color wheel.



A97E7A



A2826E



958769

# Triad

The Triadic color harmony groups three colors that are evenly spaced from another and form a triangle on the color wheel.



A2826E



639187



8A85A4

# Complementary

The Complementary color scheme is a pair of colors which are on the opposite of each other on the color wheel.



A2826E



6E8EA2

# Split Complementary

Split-complementary colors differ from the complementary color scheme. The scheme consists of three colors, the original color and two neighbors of the complement color.



758AA8



A2826E



5C9197

# Square

The Square scheme is like the rectangle color scheme, but the four colors are evenly spaced on the color wheel.



A2826E



729078



638EA3



9C8099

# Rectangle

The Rectangle color scheme consists of four colors that form a rectangle on the color wheel.



A2826E



8A8B6B



638EA3



8386A6



# Sweetspot

The Sweet Spot groups the original color and five complimentary colors.



A2826E



D4C7BE



A26E8E



6B635E



EBEBEB



6B6B6B



# Same Dimension

The Same Dimension uses a secret algorithm to generate beautiful new colors.



A2826E



D4A181



A29C6E



524D49



913800



120700



# Inverse Universe

The Inverse Universe completely reimagines the original color for something new.



6E8EA2



81B4D4



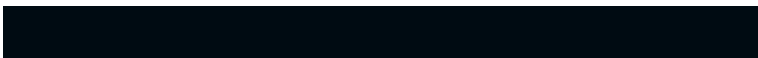
6E74A2



494E52



005991

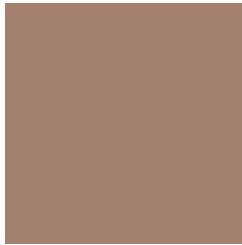


000B12



# Previews

## White Background



This preview shows how the Hex color A2826E looks on a white background.

## Color Contrast Check

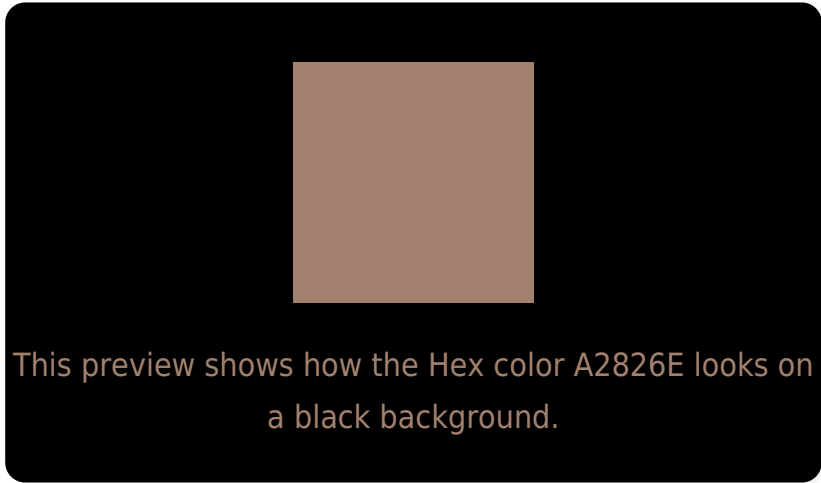
Large Text (above 18pt) WCAG AA ✓ Pass

Any Text WCAG AA × Fail

Large Text (above 18pt) WCAG AAA × Fail

Any Text WCAG AAA × Fail

# Black Background



## Color Contrast Check

Large Text (above 18pt) WCAG AA ✓ Pass

Any Text WCAG AA ✓ Pass

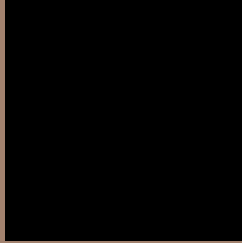
Large Text (above 18pt) WCAG AAA ✓ Pass

Any Text WCAG AAA × Fail

If you want to check with other color combinations, try the [Color Contrast Checker](#).



## Hex A2826E Background



This preview shows how black text looks on a background with the Hex color A2826E.



This preview shows how white text looks on a background with the Hex color A2826E.

# Color Blindness Simulation

Color vision deficiency is a very complex topic, and I could not describe the different causes any better than Wikipedia does, so if you want to learn more, you should check out their [article about color blindness](#).

## Dichromacy



**Original Color**  
A2826E

**Protanopia**  
908871

**Deuteranopia**  
9F836E



**Tritanopia**  
A57E88

# Trichromacy



**Original Color**  
A2826E

**Protanomaly**  
978670

**Deuteranomaly**  
A0836E

**Tritanomaly**  
A47F7F

# Monochromacy



**Original Color**  
A2826E

**Achromatopsia**  
898989

**Achromatomaly**  
92867F

# CSS Examples

## Text

The CSS property to change the color of the text to Hex A2826E is called "color". The color property can be set on classes, ids or directly on the HTML element.

This example shows how text in the color #A2826E looks like.

```
.text, #text, p{  
    color:#A2826E  
}
```

If you want to add a text shadow in that color use the text-shadow property, you can generate a text shadow directly with our [CSS Text Shadow Generator](#).

Here you see how black text with a 4 pixel #A2826E colored shadow looks like.

```
.shadow{ text-shadow: 4px 4px 2px #A2826E
}
```

## Border

The CSS property to change the border of an element to Hex A2826E is called "border". The border property can be set on classes, ids or directly on the HTML element.

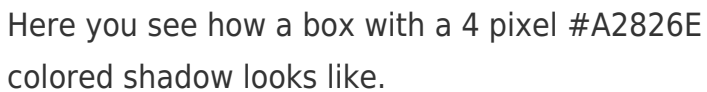
This example shows the color as border, it can be applied via the CSS property "border" or "border-color".

```
.border, #border, table{ border:4px solid
#A2826E }
```

If only the border color should be changed use the property `border-color`.

```
.border{ border-color:#A2826E }
```

If you want to add a box shadow in that color use:



Here you see how a box with a 4 pixel #A2826E colored shadow looks like.

```
.boxshadow{ -moz-box-shadow:4px 4px 4px  
4px #A2826E; -webkit-box-shadow:4px 4px  
4px 4px #A2826E; box-shadow:4px 4px 4px  
4px #A2826E }
```

# Background

The CSS property to change the background color of an element to Hex A2826E is called "background". The background property can be set on classes, ids or directly on the HTML element.

```
.background, #background, body{  
background:#A2826E }
```

If only the background color should be changed can be used:

```
.background{ background-color:#A2826E }
```

This example shows the color as background, it is applied via the CSS property "background".

To optimize and compress your CSS code, you can use our [online CSS compressor and optimizer](#) based on csstidy. If you want to create a linear or radial gradient as background or border, check our [CSS Gradient Generator](#).



Hey! You found this booklet interesting? Support Converting Colors with the new Membership Option!

The pro membership hides all ads, plus gives you double the colors in the color bucket, and more awesome pro features!

**[Learn more, Memberships starting at \\$2.50/m!](#)**

**Follow me  
on Twitter!**

@ConvertingColor