

# Converting Colors

Hex(A28772)

Have a look what the booklet for  
Hex(A28772) contains.

<b>Hex(A28772)</b> .....	3
<b><i>Conversions</i></b> .....	4
<b><i>Details</i></b> .....	6
<b><i>Harmonies</i></b> .....	11
<b><i>Previews</i></b> .....	23
<b><i>Color Blindness Simulation</i></b> .....	26
<b><i>CSS Examples</i></b> .....	29

**Color**

**Hex(A28772)**

# Conversions

## Conversions Part 1

<b>Format</b>	<b>Color</b>
Hex	A28772
RGB	162, 135, 114
RGB Percent	64%, 53%, 45%
CMY	0.3647, 0.4706, 0.5529
CMYK	0.00, 0.17, 0.30, 0.36
HSL	26°, 21%, 54%
HSV	26°, 30%, 64%
XYZ	26.6015, 26.2242, 19.5793
YIQ	140.6790, 22.8330, -0.8070

# Conversions

## Conversions Part 2

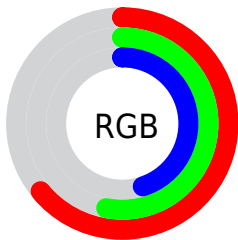
<b>Format</b>	<b>Color</b>
<b>R<sub>YB</sub></b>	162, 151, 114
Decimal	10651506
CIE <sub>Lab</sub>	58.25, 7.02, 15.13
CIE <sub>LCh</sub>	58, 16.678, 65.112
Yxy	26.2242, 0.3674, 0.3622
Android (android.graphics.Color)	4288841586 (0xFFA28772)
YUV	140.6790, -13.1527, 18.6985
Hunter-Lab	51.2096, 3.1075, 13.1780

# Details

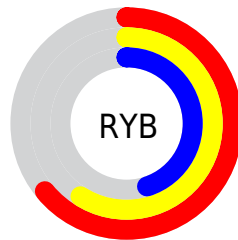
The Hex color **A28772** is a dark color, and the websafe version is hex **CC9999**. A complement of this color would be **728DA2**, and the grayscale version is **8D8D8D**.

A 20% lighter version of the original color is **D9BCA6**, and **6D5542** is the 20% darker color. If you saturate the color by 10%, you get **A27E62**, and if you desaturate by 10%, it is **A29082**.

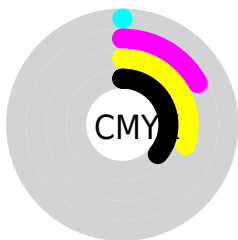
# Distribution



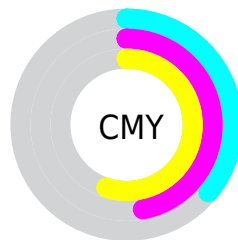
- Red (64%)
- Green (53%)
- Blue (45%)



- Red (64%)
- Yellow (59%)
- Blue (45%)



- Cyan (0%)
- Magenta (17%)
- Yellow (30%)
- Black (36%)



- Cyan (36%)
- Magenta (47%)
- Yellow (55%)

# Brightness & Saturation Gradients

These gradients show how the Hex color A28772 changes by changing the brightness by 10 percent. The first figure shows a shift by +10% for each color and the second figure -10%.

Similar to the brightness gradients but the following saturation gradients show a change of the Hex color A28772 by changing the saturation by 10% instead.





A28772



A28772

FFFFFF



876E59



D9BCA6



6D5542



F6D8C1



543E2C



FFF4DD



3C2817



FFFFFFA



271400



000000



A28772



A28772



A27E62



A29082



A27552



A29992

 A26C41

 A2A2A3

 A26331

 A2ABB3

 A25921

 A2B5C3

 A25011

 A2BED3

 A24701

 A2C7E3

 A24700

 A2D0F4

 A2D9FF

# Harmonies

## Analogous

The Analogous color harmony consists of three colors that are next to each other on the color wheel.



AA837C



A28772



958C6F

# Triad

The Triadic color harmony groups three colors that are evenly spaced from another and form a triangle on the color wheel.



A28772



68958E



9287A4

# Complementary

The Complementary color scheme is a pair of colors which are on the opposite of each other on the color wheel.



A28772



728DA2

# Split Complementary

Split-complementary colors differ from the complementary color scheme. The scheme consists of three colors, the original color and two neighbors of the complement color.



7F8CA9



A28772



65949C

# Square

The Square scheme is like the rectangle color scheme, but the four colors are evenly spaced on the color wheel.



A28772



74937F



6D91A6



A18399

# Rectangle

The Rectangle color scheme consists of four colors that form a rectangle on the color wheel.



A28772



8A8F71



6D91A6



8C89A6



# Sweetspot

The Sweet Spot groups the original color and five complimentary colors.



A28772



D4C9C1



A2728D



6B645F



EBEBEB



6B6B6B



# Same Dimension

The Same Dimension uses a secret algorithm to generate beautiful new colors.



A28772



D4A987



A29F72



524D49



914000



120800



# Inverse Universe

The Inverse Universe completely reimagines the original color for something new.



728DA2



87B2D4



7275A2



494E52



005291

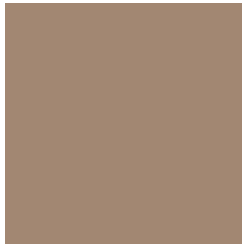


000A12



# Previews

## White Background



This preview shows how the Hex color A28772 looks on a white background.

## Color Contrast Check

Large Text (above 18pt) WCAG AA ✓ Pass

Any Text WCAG AA × Fail

Large Text (above 18pt) WCAG AAA × Fail

Any Text WCAG AAA × Fail

# Black Background



## Color Contrast Check

Large Text (above 18pt) WCAG AA ✓ Pass

Any Text WCAG AA ✓ Pass

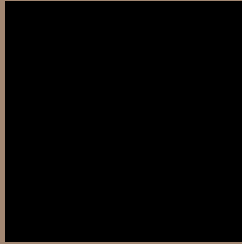
Large Text (above 18pt) WCAG AAA ✓ Pass

Any Text WCAG AAA × Fail

If you want to check with other color combinations, try the [Color Contrast Checker](#).



## Hex A28772 Background



This preview shows how black text looks on a background with the Hex color A28772.



This preview shows how white text looks on a background with the Hex color A28772.

# Color Blindness Simulation

Color vision deficiency is a very complex topic, and I could not describe the different causes any better than Wikipedia does, so if you want to learn more, you should check out their [article about color blindness](#).


## Dichromacy



**Original Color**  
A28772

**Protanopia**  
948C74

**Deuteranopia**  
A38772



**Tritanopia**  
A5838D

# Trichromacy



**Original Color**  
A28772

**Protanomaly**  
998A73

**Deuteranomaly**  
A38772

**Tritanomaly**  
A48483

# Monochromacy



**Original Color**  
A28772

**Achromatopsia**  
8D8D8D

**Achromatomaly**  
958B83

# CSS Examples

## Text

The CSS property to change the color of the text to Hex A28772 is called "color". The color property can be set on classes, ids or directly on the HTML element.

This example shows how text in the color #A28772 looks like.

```
.text, #text, p{  
    color:#A28772  
}
```

If you want to add a text shadow in that color use the text-shadow property, you can generate a text shadow directly with our [CSS Text Shadow Generator](#).

Here you see how black text with a 4 pixel #A28772 colored shadow looks like.

```
.shadow{ text-shadow: 4px 4px 2px #A28772
}
```

## Border

The CSS property to change the border of an element to Hex A28772 is called "border". The border property can be set on classes, ids or directly on the HTML element.

This example shows the color as border, it can be applied via the CSS property "border" or "border-color".

```
.border, #border, table{ border:4px solid
#A28772 }
```

If only the border color should be changed use the property border-color.

```
.border{ border-color:#A28772 }
```

If you want to add a box shadow in that color use:

Here you see how a box with a 4 pixel #A28772 colored shadow looks like.

```
.boxshadow{ -moz-box-shadow:4px 4px 4px  
4px #A28772; -webkit-box-shadow:4px 4px  
4px 4px #A28772; box-shadow:4px 4px 4px  
4px #A28772 }
```

# Background

The CSS property to change the background color of an element to Hex A28772 is called "background". The background property can be set on classes, ids or directly on the HTML element.

```
.background, #background, body{  
background:#A28772 }
```

If only the background color should be changed can be used:

```
.background{ background-color:#A28772 }
```

This example shows the color as background, it is applied via the CSS property "background".

To optimize and compress your CSS code, you can use our [online CSS compressor and optimizer](#) based on csstidy. If you want to create a linear or radial gradient as background or border, check our [CSS Gradient Generator](#).



Hey! You found this booklet interesting? Support Converting Colors with the new Membership Option!

The pro membership hides all ads, plus gives you double the colors in the color bucket, and more awesome pro features!

**[Learn more, Memberships starting at \\$2.50/m!](#)**

**Follow me  
on Twitter!**

@ConvertingColor