

Converting Colors

Hex(A34D53)

Have a look what the booklet for
Hex(A34D53) contains.

Hex(A34D53)	3
<i>Conversions</i>	4
<i>Details</i>	6
<i>Harmonies</i>	11
<i>Previews</i>	23
<i>Color Blindness Simulation</i>	26
<i>CSS Examples</i>	29

Color

Hex(A34D53)

Conversions

Conversions Part 1

Format	Color
Hex	A34D53
RGB	163, 77, 83
RGB Percent	64%, 30%, 33%
CMY	0.3608, 0.6980, 0.6745
CMYK	0.00, 0.53, 0.49, 0.36
HSL	356°, 36%, 47%
HSV	356°, 53%, 64%
XYZ	19.3195, 13.7188, 9.8134
YIQ	103.3980, 49.3300, 20.0980

Conversions

Conversions Part 2

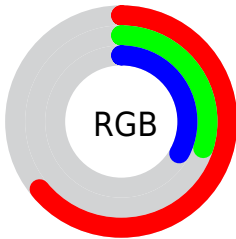
Format	Color
R_{YB}	163, 77, 83
Decimal	10702163
CIE Lab	43.83, 36.11, 13.48
CIE LCh	44, 38.542, 20.471
Yxy	13.7188, 0.4508, 0.3201
Android (android.graphics.Color)	4288892243 (0xFFA34D53)
YUV	103.3980, -10.0562, 52.2710
Hunter-Lab	37.0389, 28.2873, 10.2185

Details

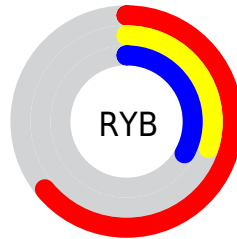
The Hex color **A34D53** is a dark color, and the websafe version is hex **CC6666**. A complement of this color would be **4DA39D**, and the grayscale version is **676767**.

A 20% lighter version of the original color is **DD8084**, and **6B1B26** is the 20% darker color. If you saturate the color by 10%, you get **A33D44**, and if you desaturate by 10%, it is **A35D62**.

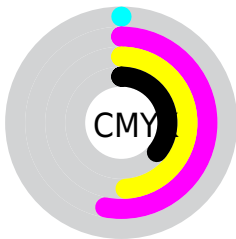
Distribution



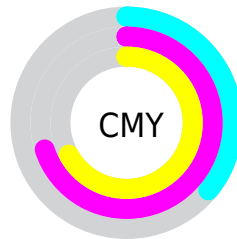
- Red (64%)
- Green (30%)
- Blue (33%)



- Red (64%)
- Yellow (30%)
- Blue (33%)



- Cyan (0%)
- Magenta (53%)
- Yellow (49%)
- Black (36%)



- Cyan (36%)
- Magenta (70%)
- Yellow (67%)

Brightness & Saturation Gradients

These gradients show how the Hex color A34D53 changes by changing the brightness by 10 percent. The first figure shows a shift by +10% for each color and the second figure -10%.

Similar to the brightness gradients but the following saturation gradients show a change of the Hex color A34D53 by changing the saturation by 10% instead.

 A34D53

 A34D53

FFFFFF

 87343C

 DD8084

 6B1B26

 FB9B9E

 500012

 FFB6B9

 370000

 FFD3D5

 150000

 FFEFF1

 000000

 A34D53

 A34D53

 A33D44

 A35D62

 A32C35

 A36E71

 A31C26

 A37E80

 A30C16

 A38E90

 A3000B

 A39F9F

 A3AFAE

 A3BFBD

 A3CFCC

 A3E0DB

Harmonies

Analogous

The Analogous color harmony consists of three colors that are next to each other on the color wheel.



9D4D73



A34D53



995637

Triad

The Triadic color harmony groups three colors that are evenly spaced from another and form a triangle on the color wheel.



A34D53



3E733D



006EA6

Complementary

The Complementary color scheme is a pair of colors which are on the opposite of each other on the color wheel.



A34D53



4DA39D

Split Complementary

Split-complementary colors differ from the complementary color scheme. The scheme consists of three colors, the original color and two neighbors of the complement color.



007598



A34D53



00775C

Square

The Square scheme is like the rectangle color scheme, but the four colors are evenly spaced on the color wheel.



A34D53



646D28



00777D



5863A4

Rectangle

The Rectangle color scheme consists of four colors that form a rectangle on the color wheel.



A34D53



8B5E2A



00777D



0071A3

Sweetspot

The Sweet Spot groups the original color and five complimentary colors.



A34D53



D4B2B4



9C4DA3



6B5758



EBEBEB



6B6B6B

Same Dimension

The Same Dimension uses a secret algorithm to generate beautiful new colors.



A34D53



D44E58



A3714D



52494A



91000A



120001

Inverse Universe

The Inverse Universe completely reimagines the original color for something new.



A34D53



D44E58



4D7FA3



52494A



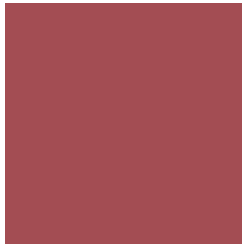
91000A



120001

Previews

White Background



This preview shows how the Hex color A34D53 looks on a white background.

Color Contrast Check

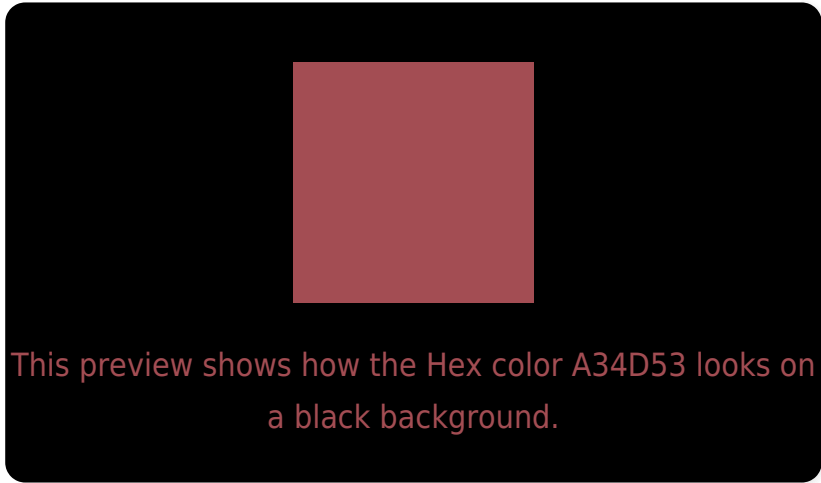
Large Text (above 18pt) WCAG AA ✓ Pass

Any Text WCAG AA ✓ Pass

Large Text (above 18pt) WCAG AAA ✓ Pass

Any Text WCAG AAA × Fail

Black Background



Color Contrast Check

Large Text (above 18pt) WCAG AA ✓ Pass

Any Text WCAG AA × Fail

Large Text (above 18pt) WCAG AAA × Fail

Any Text WCAG AAA × Fail

If you want to check with other color combinations, try the [Color Contrast Checker](#).

Hex A34D53 Background



This preview shows how black text looks on a background with the Hex color A34D53.

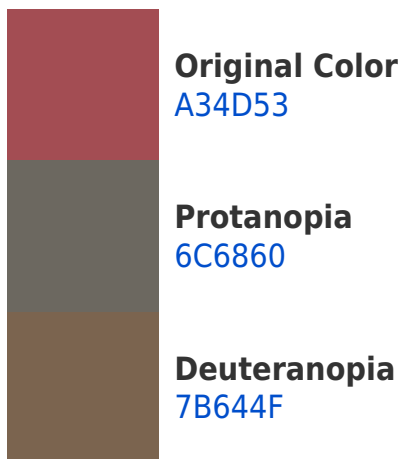


This preview shows how white text looks on a background with the Hex color A34D53.

Color Blindness Simulation

Color vision deficiency is a very complex topic, and I could not describe the different causes any better than Wikipedia does, so if you want to learn more, you should check out their [article about color blindness](#).

Dichromacy





Tritanopia
A34D52

Trichromacy



Original Color
A34D53

Protanomaly
805E5B

Deuteranomaly
8A5C50

Tritanomaly
A34D52

Monochromacy



Original Color
A34D53

Achromatopsia
676767

Achromatomaly
7D5E60

CSS Examples

Text

The CSS property to change the color of the text to Hex A34D53 is called "color". The color property can be set on classes, ids or directly on the HTML element.

This example shows how text in the color #A34D53 looks like.

```
.text, #text, p{  
  color:#A34D53  
}
```

If you want to add a text shadow in that color use the text-shadow property, you can generate a text shadow directly with our [CSS Text Shadow Generator](#).

Here you see how black text with a 4 pixel #A34D53 colored shadow looks like.

```
.shadow{ text-shadow: 4px 4px 2px #A34D53
}
```

Border

The CSS property to change the border of an element to Hex A34D53 is called "border". The border property can be set on classes, ids or directly on the HTML element.

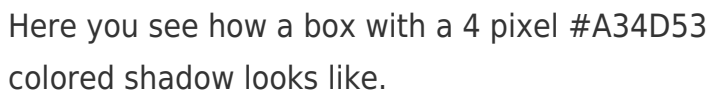
This example shows the color as border, it can be applied via the CSS property "border" or "border-color".

```
.border, #border, table{ border:4px solid
#A34D53 }
```

If only the border color should be changed use the property `border-color`.

```
.border{ border-color:#A34D53 }
```

If you want to add a box shadow in that color use:



Here you see how a box with a 4 pixel `#A34D53` colored shadow looks like.

```
.boxshadow{ -moz-box-shadow:4px 4px 4px  
4px #A34D53; -webkit-box-shadow:4px 4px  
4px 4px #A34D53; box-shadow:4px 4px 4px  
4px #A34D53 }
```

Background

The CSS property to change the background color of an element to Hex A34D53 is called "background". The background property can be set on classes, ids or directly on the HTML element.

```
.background, #background, body{  
background:#A34D53 }
```

If only the background color should be changed can be used:

```
.background{ background-color:#A34D53 }
```

This example shows the color as background, it is applied via the CSS property "background".

To optimize and compress your CSS code, you can use our [online CSS compressor and optimizer](#) based on csstidy. If you want to create a linear or radial gradient as background or border, check our [CSS Gradient Generator](#).

Hey! You found this booklet interesting? Support Converting Colors with the new Membership Option!

The pro membership hides all ads, plus gives you double the colors in the color bucket, and more awesome pro features!

[Learn more, Memberships starting at \\$2.50/m!](#)

**Follow me
on Twitter!**

@ConvertingColor