

Converting Colors

Hex(A37350)

Have a look what the booklet for
Hex(A37350) contains.

Hex(A37350)	3
<i>Conversions</i>	4
<i>Details</i>	6
<i>Harmonies</i>	11
<i>Previews</i>	23
<i>Color Blindness Simulation</i>	26
<i>CSS Examples</i>	29

Color

Hex(A37350)

Conversions

Conversions Part 1

Format	Color
Hex	A37350
RGB	163, 115, 80
RGB Percent	64%, 45%, 31%
CMY	0.3608, 0.5490, 0.6863
CMYK	0.00, 0.29, 0.51, 0.36
HSL	25°, 34%, 48%
HSV	25°, 51%, 64%
XYZ	22.6830, 20.6272, 10.3753
YIQ	125.3620, 39.8430, -0.7090

Conversions

Conversions Part 2

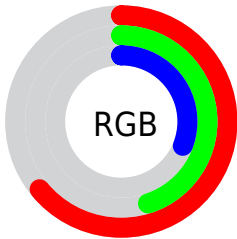
Format	Color
R_{YB}	163, 141, 80
Decimal	10711888
CIE Lab	52.54, 14.71, 26.82
CIE LCh	53, 30.591, 61.252
Yxy	20.6272, 0.4225, 0.3842
Android (android.graphics.Color)	4288901968 (0xFFA37350)
YUV	125.3620, -22.3635, 33.0085
Hunter-Lab	45.4172, 9.6693, 18.2475

Details

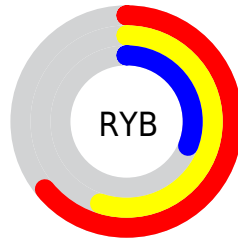
The Hex color **A37350** is a dark color, and the websafe version is hex **996633**. A complement of this color would be **5080A3**, and the grayscale version is **7E7E7E**.

A 20% lighter version of the original color is **DCA782**, and **6D4322** is the 20% darker color. If you saturate the color by 10%, you get **A36A40**, and if you desaturate by 10%, it is **A37C60**.

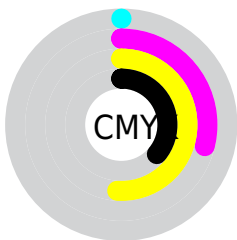
Distribution



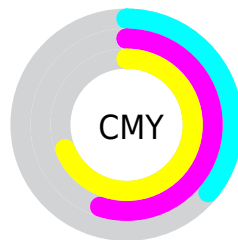
- Red (64%)
- Green (45%)
- Blue (31%)



- Red (64%)
- Yellow (55%)
- Blue (31%)



- Cyan (0%)
- Magenta (29%)
- Yellow (51%)
- Black (36%)



- Cyan (36%)
- Magenta (55%)
- Yellow (69%)

Brightness & Saturation Gradients

These gradients show how the Hex color A37350 changes by changing the brightness by 10 percent. The first figure shows a shift by +10% for each color and the second figure -10%.

Similar to the brightness gradients but the following saturation gradients show a change of the Hex color A37350 by changing the saturation by 10% instead.



A37350



A37350

FFFFFF



875A39



DCA782



6D4322



F9C29C



522C0D



FFDEB7



391700



FFFBD3



220000



FFFFEF



000000



A37350



A37350



A36A40



A37C60



A3602F



A38671

 A3571F

 A38F81

 A34D0F

 A39991

 A34500

 A3A2A2

 A3ACB2

 A3B5C2

 A3BED2

 A3C8E3

Harmonies

Analogous

The Analogous color harmony consists of three colors that are next to each other on the color wheel.



AF6B63



A37350



8D7C48

Triad

The Triadic color harmony groups three colors that are evenly spaced from another and form a triangle on the color wheel.



A37350



2D8B7E



8276AA

Complementary

The Complementary color scheme is a pair of colors which are on the opposite of each other on the color wheel.



A37350



5080A3

Split Complementary

Split-complementary colors differ from the complementary color scheme. The scheme consists of three colors, the original color and two neighbors of the complement color.



5980B2



A37350



028B98

Square

The Square scheme is like the rectangle color scheme, but the four colors are evenly spaced on the color wheel.



A37350



528963



2887AB



9F6D97

Rectangle

The Rectangle color scheme consists of four colors that form a rectangle on the color wheel.



A37350



7C824C



2887AB



7579AE

Sweetspot

The Sweet Spot groups the original color and five complimentary colors.



A37350



D4C1B4



A35080



6B6058



EBEBEB



6B6B6B

Same Dimension

The Same Dimension uses a secret algorithm to generate beautiful new colors.



A37350



D48953



A39C50



524D49



913D00



120800

Inverse Universe

The Inverse Universe completely reimagines the original color for something new.



5080A3



539DD4



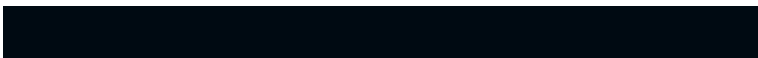
5057A3



494E52



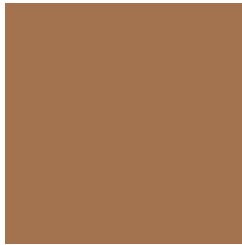
005491



000A12

Previews

White Background



This preview shows how the Hex color A37350 looks on a white background.

Color Contrast Check

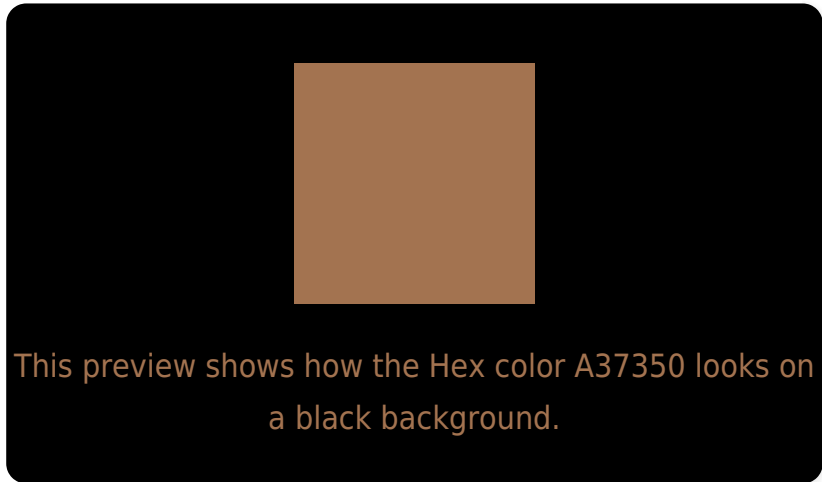
Large Text (above 18pt) WCAG AA ✓ Pass

Any Text WCAG AA × Fail

Large Text (above 18pt) WCAG AAA × Fail

Any Text WCAG AAA × Fail

Black Background



Color Contrast Check

Large Text (above 18pt) WCAG AA ✓ Pass

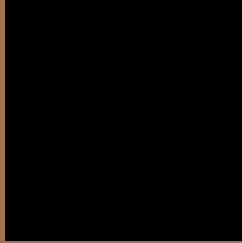
Any Text WCAG AA ✓ Pass

Large Text (above 18pt) WCAG AAA ✓ Pass

Any Text WCAG AAA × Fail

If you want to check with other color combinations, try the [Color Contrast Checker](#).

Hex A37350 Background



This preview shows how black text looks on a background with the Hex color A37350.



This preview shows how white text looks on a background with the Hex color A37350.

Color Blindness Simulation

Color vision deficiency is a very complex topic, and I could not describe the different causes any better than Wikipedia does, so if you want to learn more, you should check out their [article about color blindness](#).

Dichromacy



Original Color
A37350

Protanopia
887E54

Deuteranopia
98784F

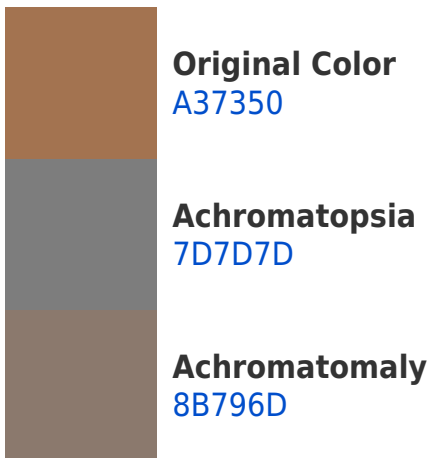


Tritanopia
A66E76

Trichromacy



Monochromacy



CSS Examples

Text

The CSS property to change the color of the text to Hex A37350 is called "color". The color property can be set on classes, ids or directly on the HTML element.

This example shows how text in the color #A37350 looks like.

```
.text, #text, p{  
    color:#A37350  
}
```

If you want to add a text shadow in that color use the text-shadow property, you can generate a text shadow directly with our [CSS Text Shadow Generator](#).

Here you see how black text with a 4 pixel #A37350 colored shadow looks like.

```
.shadow{ text-shadow: 4px 4px 2px #A37350
}
```

Border

The CSS property to change the border of an element to Hex A37350 is called "border". The border property can be set on classes, ids or directly on the HTML element.

This example shows the color as border, it can be applied via the CSS property "border" or "border-color".

```
.border, #border, table{ border:4px solid
#A37350 }
```

If only the border color should be changed use the property `border-color`.

```
.border{ border-color:#A37350 }
```

If you want to add a box shadow in that color use:

Here you see how a box with a 4 pixel #A37350 colored shadow looks like.

```
.boxshadow{ -moz-box-shadow:4px 4px 4px  
4px #A37350; -webkit-box-shadow:4px 4px  
4px 4px #A37350; box-shadow:4px 4px 4px  
4px #A37350 }
```

Background

The CSS property to change the background color of an element to Hex A37350 is called "background". The background property can be set on classes, ids or directly on the HTML element.

```
.background, #background, body{  
background:#A37350 }
```

If only the background color should be changed can be used:

```
.background{ background-color:#A37350 }
```

This example shows the color as background, it is applied via the CSS property "background".

To optimize and compress your CSS code, you can use our [online CSS compressor and optimizer](#) based on csstidy. If you want to create a linear or radial gradient as background or border, check our [CSS Gradient Generator](#).

Hey! You found this booklet interesting? Support Converting Colors with the new Membership Option!

The pro membership hides all ads, plus gives you double the colors in the color bucket, and more awesome pro features!

[Learn more, Memberships starting at \\$2.50/m!](#)

**Follow me
on Twitter!**

@ConvertingColor