

Converting Colors

Hex(A38080)

Have a look what the booklet for
Hex(A38080) contains.

Hex(A38080)	3
<i>Conversions</i>	4
<i>Details</i>	6
<i>Harmonies</i>	11
<i>Previews</i>	23
<i>Color Blindness Simulation</i>	26
<i>CSS Examples</i>	29

Color

Hex(A38080)

Conversions

Conversions Part 1

Format	Color
Hex	A38080
RGB	163, 128, 128
RGB Percent	64%, 50%, 50%
CMY	0.3608, 0.4980, 0.4980
CMYK	0.00, 0.21, 0.21, 0.36
HSL	0°, 16%, 57%
HSV	0°, 21%, 64%
XYZ	26.7197, 24.7834, 23.7975
YIQ	138.4650, 20.8600, 7.4200

Conversions

Conversions Part 2

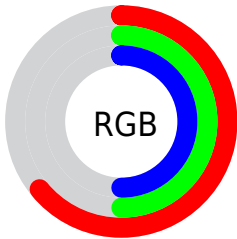
Format	Color
RYB	163, 128, 128
Decimal	10715264
CIELab	56.86, 13.47, 5.15
CIELCh	57, 14.427, 20.935
Yxy	24.7834, 0.3548, 0.3291
Android (android.graphics.Color)	4288905344 (0xFFA38080)
YUV	138.4650, -5.1592, 21.5172
Hunter-Lab	49.7829, 8.6852, 6.5060

Details

The Hex color **A38080** is a dark color, and the websafe version is hex **996666**. A complement of this color would be **80A3A3**, and the grayscale version is **8B8B8B**.

A 20% lighter version of the original color is **DAB5B5**, and **6F4F4F** is the 20% darker color. If you saturate the color by 10%, you get **A37070**, and if you desaturate by 10%, it is **A39090**.

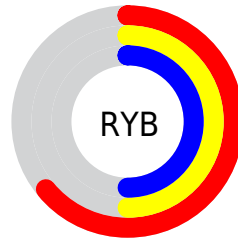
Distribution



Red (64%)

Green (50%)

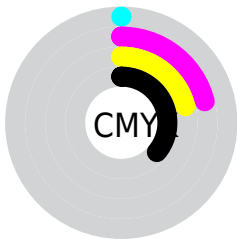
Blue (50%)



Red (64%)

Yellow (50%)

Blue (50%)

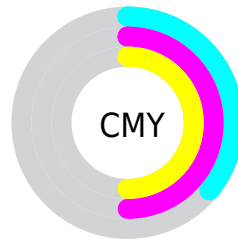


Cyan (0%)

Magenta (21%)

Yellow (21%)

Black (36%)



Cyan (36%)

Magenta (50%)

Yellow (50%)

Brightness & Saturation Gradients

These gradients show how the Hex color A38080 changes by changing the brightness by 10 percent. The first figure shows a shift by +10% for each color and the second figure -10%.

Similar to the brightness gradients but the following saturation gradients show a change of the Hex color A38080 by changing the saturation by 10% instead.

 A38080

 A38080

FFFFFF

 886767

 DAB5B5

 6F4F4F

 F7D1D0

 563838

 FFEDED

 3E2223

 270D0D

 000000

 A38080

 A38080

 A37070

 A39090

 A35F5F

 A3A1A1

 A34F4F

 A3B1B1

 A33F3F

 A3C1C1

 A32F2F

 A3D2D2

 A31E1E

 A3E2E2

 A30E0E

 A3F2F2

 A30000

 A3FFFF

Harmonies

Analogous

The Analogous color harmony consists of three colors that are next to each other on the color wheel.



9F808D



A38080



9F8275

Triad

The Triadic color harmony groups three colors that are evenly spaced from another and form a triangle on the color wheel.



A38080



7A8E78



768BA1

Complementary

The Complementary color scheme is a pair of colors which are on the opposite of each other on the color wheel.



A38080



80A3A3

Split Complementary

Split-complementary colors differ from the complementary color scheme. The scheme consists of three colors, the original color and two neighbors of the complement color.



6A8E9B



A38080



6E9084

Square

The Square scheme is like the rectangle color scheme, but the four colors are evenly spaced on the color wheel.



A38080



898A71



679091



8687A0

Rectangle

The Rectangle color scheme consists of four colors that form a rectangle on the color wheel.



A38080



9A8571



679091



718CA0

Sweetspot

The Sweet Spot groups the original color and five complimentary colors.



A38080



D4C7C7



A380A3



6B6464



EBEBEB



6B6B6B

Same Dimension

The Same Dimension uses a secret algorithm to generate beautiful new colors.



A38080



D49D9D



A39280



524949



910000



120000

Inverse Universe

The Inverse Universe completely reimagines the original color for something new.



80A3A3



9DD4D4



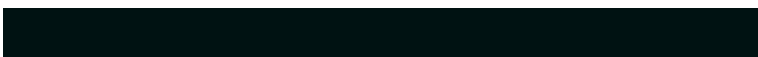
8092A3



495252



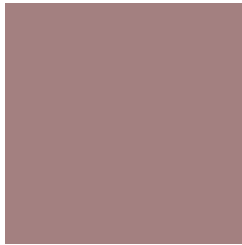
009191



001212

Previews

White Background



This preview shows how the Hex color A38080 looks on a white background.

Color Contrast Check

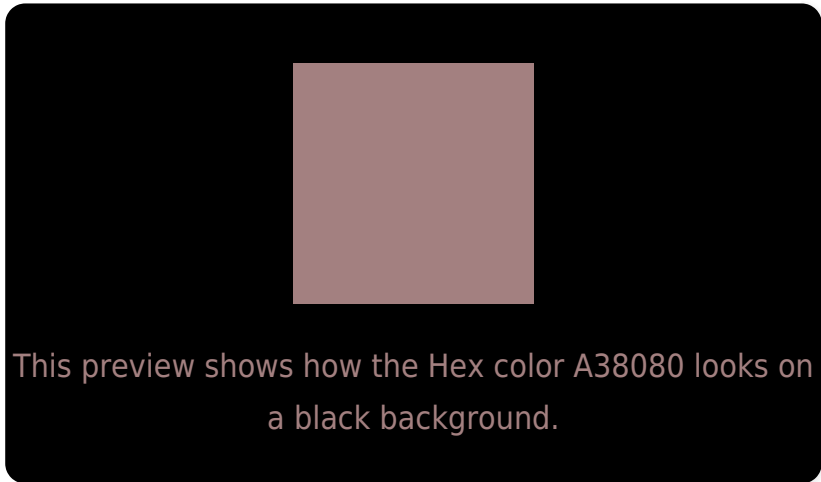
Large Text (above 18pt) WCAG AA ✓ Pass

Any Text WCAG AA × Fail

Large Text (above 18pt) WCAG AAA × Fail

Any Text WCAG AAA × Fail

Black Background



Color Contrast Check

Large Text (above 18pt) WCAG AA ✓ Pass

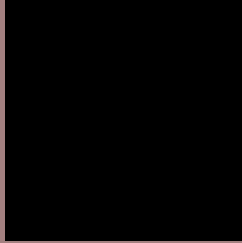
Any Text WCAG AA ✓ Pass

Large Text (above 18pt) WCAG AAA ✓ Pass

Any Text WCAG AAA × Fail

If you want to check with other color combinations, try the [Color Contrast Checker](#).

Hex A38080 Background



This preview shows how black text looks on a background with the Hex color A38080.



This preview shows how white text looks on a background with the Hex color A38080.

Color Blindness Simulation

Color vision deficiency is a very complex topic, and I could not describe the different causes any better than Wikipedia does, so if you want to learn more, you should check out their [article about color blindness](#).

Dichromacy



Original Color
A38080

Protanopia
8C8884

Deuteranopia
99847F



Tritanopia
A47F88

Trichromacy



Original Color
A38080

Protanomaly
948583

Deuteranomaly
9D837F

Tritanomaly
A47F85

Monochromacy



Original Color
A38080

Achromatopsia
8A8A8A

Achromatomaly
938686

CSS Examples

Text

The CSS property to change the color of the text to Hex A38080 is called "color". The color property can be set on classes, ids or directly on the HTML element.

This example shows how text in the color #A38080 looks like.

```
.text, #text, p{  
    color:#A38080  
}
```

If you want to add a text shadow in that color use the text-shadow property, you can generate a text shadow directly with our [CSS Text Shadow Generator](#).

Here you see how black text with a 4 pixel #A38080 colored shadow looks like.

```
.shadow{ text-shadow: 4px 4px 2px #A38080
}
```

Border

The CSS property to change the border of an element to Hex A38080 is called "border". The border property can be set on classes, ids or directly on the HTML element.

This example shows the color as border, it can be applied via the CSS property "border" or "border-color".

```
.border, #border, table{ border:4px solid
#A38080 }
```

If only the border color should be changed use the property `border-color`.

```
.border{ border-color:#A38080 }
```

If you want to add a box shadow in that color use:

Here you see how a box with a 4 pixel #A38080 colored shadow looks like.

```
.boxshadow{ -moz-box-shadow:4px 4px 4px  
4px #A38080; -webkit-box-shadow:4px 4px  
4px 4px #A38080; box-shadow:4px 4px 4px  
4px #A38080 }
```

Background

The CSS property to change the background color of an element to Hex A38080 is called "background". The background property can be set on classes, ids or directly on the HTML element.

```
.background, #background, body{  
background:#A38080 }
```

If only the background color should be changed can be used:

```
.background{ background-color:#A38080 }
```

This example shows the color as background, it is applied via the CSS property "background".

To optimize and compress your CSS code, you can use our [online CSS compressor and optimizer](#) based on csstidy. If you want to create a linear or radial gradient as background or border, check our [CSS Gradient Generator](#).

Hey! You found this booklet interesting? Support Converting Colors with the new Membership Option!

The pro membership hides all ads, plus gives you double the colors in the color bucket, and more awesome pro features!

[Learn more, Memberships starting at \\$2.50/m!](#)

**Follow me
on Twitter!**

@ConvertingColor