

# Converting Colors

Hex(A3846E)

Have a look what the booklet for  
Hex(A3846E) contains.

<b>Hex(A3846E)</b> .....	3
<i><b>Conversions</b></i> .....	4
<i><b>Details</b></i> .....	6
<i><b>Harmonies</b></i> .....	11
<i><b>Previews</b></i> .....	23
<i><b>Color Blindness Simulation</b></i> .....	26
<i><b>CSS Examples</b></i> .....	29

**Color**

**Hex(A3846E)**

# Conversions

## Conversions Part 1

<b>Format</b>	<b>Color</b>
Hex	A3846E
RGB	163, 132, 110
RGB Percent	64%, 52%, 43%
CMY	0.3608, 0.4824, 0.5686
CMYK	0.00, 0.19, 0.33, 0.36
HSL	25°, 22%, 54%
HSV	25°, 33%, 64%
XYZ	26.1700, 25.4148, 18.2781
YIQ	138.7610, 25.5380, -0.2700

# Conversions

## Conversions Part 2

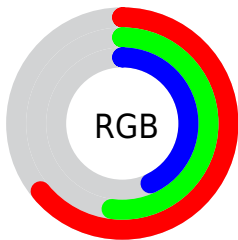
<b>Format</b>	<b>Color</b>
<b>R<sub>YB</sub></b>	163, 148, 110
Decimal	10716270
CIE <sub>Lab</sub>	57.48, 8.57, 16.36
CIE <sub>LCh</sub>	57, 18.465, 62.354
Yxy	25.4148, 0.3746, 0.3638
Android (android.graphics.Color)	4288906350 (0xFFA3846E)
YUV	138.7610, -14.1792, 21.2576
Hunter-Lab	50.4131, 4.4382, 13.7927

# Details

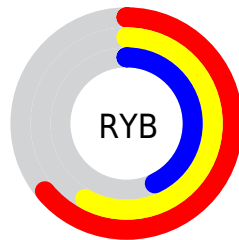
The Hex color **A3846E** is a dark color, and the websafe version is hex **996666**. A complement of this color would be **6E8DA3**, and the grayscale version is **8B8B8B**.

A 20% lighter version of the original color is **DBB9A2**, and **6E533E** is the 20% darker color. If you saturate the color by 10%, you get **A37A5E**, and if you desaturate by 10%, it is **A38E7E**.

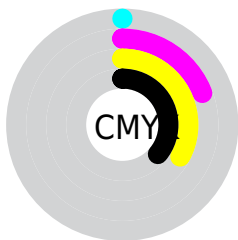
# Distribution



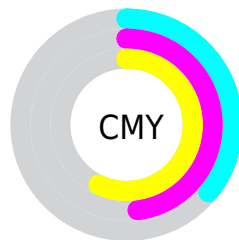
- Red (64%)
- Green (52%)
- Blue (43%)



- Red (64%)
- Yellow (58%)
- Blue (43%)



- Cyan (0%)
- Magenta (19%)
- Yellow (33%)
- Black (36%)



- Cyan (36%)
- Magenta (48%)
- Yellow (57%)

# Brightness & Saturation Gradients

These gradients show how the Hex color A3846E changes by changing the brightness by 10 percent. The first figure shows a shift by +10% for each color and the second figure -10%.

Similar to the brightness gradients but the following saturation gradients show a change of the Hex color A3846E by changing the saturation by 10% instead.



 A3846E

 A3846E

FFFFFF

 886B56

 DBB9A2

 6E533E

 F8D5BD

 553B28

 FFF1D9

 3D2614

 FFFFF5

 271100

 000000

 A3846E

 A3846E

 A37A5E

 A38E7E

 A3714D

 A3978F

 A3673D

 A3A19F

 A35E2D

 A3AAAF

 A3541D

 A3B4C0

 A34B0C

 A3BDD0

 A34400

 A3C7E0

 A3D0F0

 A3DAFF

# Harmonies

## Analogous

The Analogous color harmony consists of three colors that are next to each other on the color wheel.



AB807A



A3846E



95896A

# Triad

The Triadic color harmony groups three colors that are evenly spaced from another and form a triangle on the color wheel.



A3846E



62938B



8E85A5

# Complementary

The Complementary color scheme is a pair of colors which are on the opposite of each other on the color wheel.



A3846E



6E8DA3

# Split Complementary

Split-complementary colors differ from the complementary color scheme. The scheme consists of three colors, the original color and two neighbors of the complement color.



798BAA



A3846E



5D939B

# Square

The Square scheme is like the rectangle color scheme, but the four colors are evenly spaced on the color wheel.



A3846E



71927B



6690A6



A08199

# Rectangle

The Rectangle color scheme consists of four colors that form a rectangle on the color wheel.



A3846E



898D6C



6690A6



8787A8



# Sweetspot

The Sweet Spot groups the original color and five complimentary colors.



A3846E



D4C7BE



A36E8E



6B645E



EBEBEB



6B6B6B



# Same Dimension

The Same Dimension uses a secret algorithm to generate beautiful new colors.



A3846E



D4A381



A39E6E



524D49



913C00



120700



# Inverse Universe

The Inverse Universe completely reimagines the original color for something new.



6E8DA3



81B1D4



6E73A3



494E52



005591

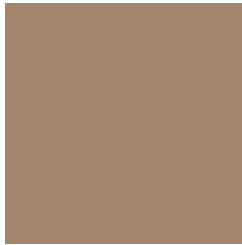


000A12



# Previews

## White Background



This preview shows how the Hex color A3846E looks on a white background.

## Color Contrast Check

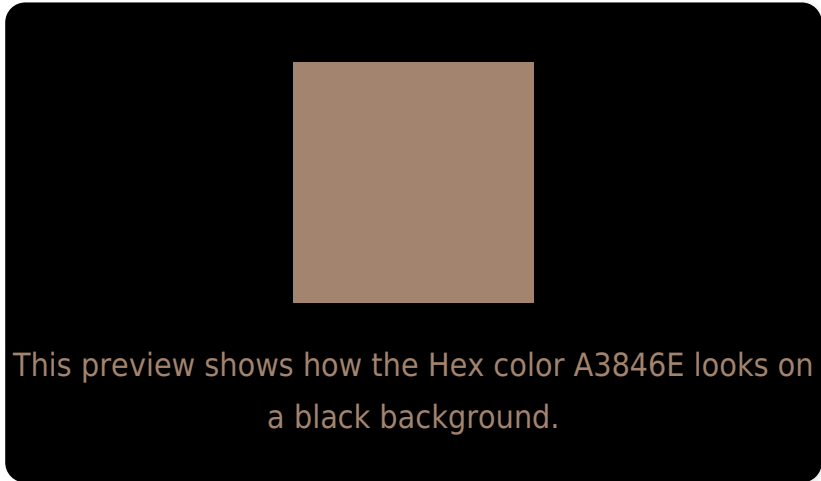
Large Text (above 18pt) WCAG AA ✓ Pass

Any Text WCAG AA × Fail

Large Text (above 18pt) WCAG AAA × Fail

Any Text WCAG AAA × Fail

# Black Background



## Color Contrast Check

Large Text (above 18pt) WCAG AA ✓ Pass

Any Text WCAG AA ✓ Pass

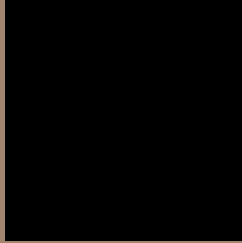
Large Text (above 18pt) WCAG AAA ✓ Pass

Any Text WCAG AAA × Fail

If you want to check with other color combinations, try the [Color Contrast Checker](#).



## Hex A3846E Background



This preview shows how black text looks on a background with the Hex color A3846E.

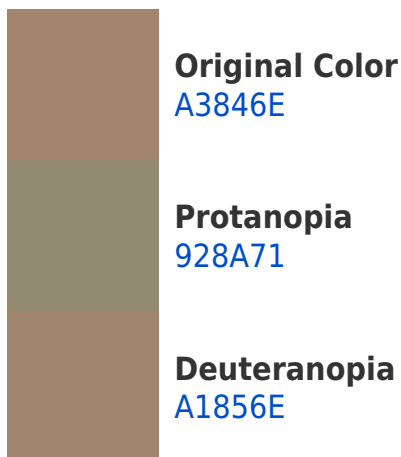


This preview shows how white text looks on a background with the Hex color A3846E.

# Color Blindness Simulation

Color vision deficiency is a very complex topic, and I could not describe the different causes any better than Wikipedia does, so if you want to learn more, you should check out their [article about color blindness](#).

## Dichromacy





**Tritanopia**  
A6808A

# Trichromacy



**Original Color**  
A3846E

**Protanomaly**  
988870

**Deuteranomaly**  
A2856E

**Tritanomaly**  
A58180

# Monochromacy



**Original Color**  
A3846E

**Achromatopsia**  
8B8B8B

**Achromatomaly**  
948880

# CSS Examples

## Text

The CSS property to change the color of the text to Hex A3846E is called "color". The color property can be set on classes, ids or directly on the HTML element.

This example shows how text in the color #A3846E looks like.

```
.text, #text, p{  
    color:#A3846E  
}
```

If you want to add a text shadow in that color use the text-shadow property, you can generate a text shadow directly with our [CSS Text Shadow Generator](#).

Here you see how black text with a 4 pixel #A3846E colored shadow looks like.

```
.shadow{ text-shadow: 4px 4px 2px #A3846E
}
```

## Border

The CSS property to change the border of an element to Hex A3846E is called "border". The border property can be set on classes, ids or directly on the HTML element.

This example shows the color as border, it can be applied via the CSS property "border" or "border-color".

```
.border, #border, table{ border:4px solid
#A3846E }
```

If only the border color should be changed use the property `border-color`.

```
.border{ border-color:#A3846E }
```

If you want to add a box shadow in that color use:

Here you see how a box with a 4 pixel #A3846E colored shadow looks like.

```
.boxshadow{ -moz-box-shadow:4px 4px 4px  
4px #A3846E; -webkit-box-shadow:4px 4px  
4px 4px #A3846E; box-shadow:4px 4px 4px  
4px #A3846E }
```

# Background

The CSS property to change the background color of an element to Hex A3846E is called "background". The background property can be set on classes, ids or directly on the HTML element.

```
.background, #background, body{  
background:#A3846E }
```

If only the background color should be changed can be used:

```
.background{ background-color:#A3846E }
```

This example shows the color as background, it is applied via the CSS property "background".

To optimize and compress your CSS code, you can use our [online CSS compressor and optimizer](#) based on csstidy. If you want to create a linear or radial gradient as background or border, check our [CSS Gradient Generator](#).



Hey! You found this booklet interesting? Support Converting Colors with the new Membership Option!

The pro membership hides all ads, plus gives you double the colors in the color bucket, and more awesome pro features!

**[Learn more, Memberships starting at \\$2.50/m!](#)**

**Follow me  
on Twitter!**

@ConvertingColor