

Converting Colors

Hex(A38485)

Have a look what the booklet for
Hex(A38485) contains.

Hex(A38485)	3
<i>Conversions</i>	4
<i>Details</i>	6
<i>Harmonies</i>	11
<i>Previews</i>	23
<i>Color Blindness Simulation</i>	26
<i>CSS Examples</i>	29

Color

Hex(A38485)

Conversions

Conversions Part 1

Format	Color
Hex	A38485
RGB	163, 132, 133
RGB Percent	64%, 52%, 52%
CMY	0.3608, 0.4824, 0.4784
CMYK	0.00, 0.19, 0.18, 0.36
HSL	358°, 14%, 58%
HSV	358°, 19%, 64%
XYZ	27.5892, 25.9825, 25.7513
YIQ	141.3830, 18.1550, 6.8830

Conversions

Conversions Part 2

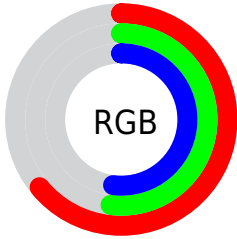
Format	Color
R_{YB}	163, 132, 133
Decimal	10716293
CIE _{Lab}	58.02, 12.00, 3.94
CIE _{LCh}	58, 12.633, 18.165
Yxy	25.9825, 0.3478, 0.3276
Android (android.graphics.Color)	4288906373 (0xFFA38485)
YUV	141.3830, -4.1328, 18.9581
Hunter-Lab	50.9730, 7.4103, 5.7281

Details

The Hex color **A38485** is a dark color, and the websafe version is hex **CC9999**. A complement of this color would be **84A3A2**, and the grayscale version is **8D8D8D**.

A 20% lighter version of the original color is **DAB9BA**, and **6F5254** is the 20% darker color. If you saturate the color by 10%, you get **A37475**, and if you desaturate by 10%, it is **A39495**.

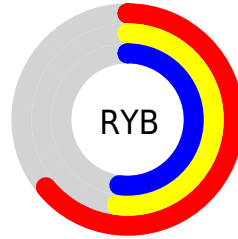
Distribution



Red (64%)

Green (52%)

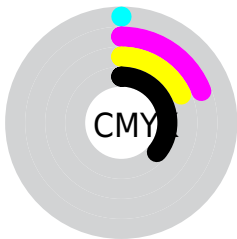
Blue (52%)



Red (64%)

Yellow (52%)

Blue (52%)

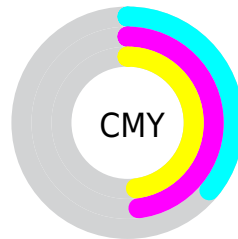


Cyan (0%)

Magenta (19%)

Yellow (18%)

Black (36%)



Cyan (36%)

Magenta (48%)

Yellow (48%)

Brightness & Saturation Gradients

These gradients show how the Hex color A38485 changes by changing the brightness by 10 percent. The first figure shows a shift by +10% for each color and the second figure -10%.

Similar to the brightness gradients but the following saturation gradients show a change of the Hex color A38485 by changing the saturation by 10% instead.



A38485



A38485

FFFFFF



886B6C



DAB9BA



6F5254



F7D5D6



563B3D



FFF1F2



3E2527



281112



090000



000000



A38485



A38485



A37475



A39495

 A36365

 A3A5A5

 A35356

 A3B5B4

 A34346

 A3C5C4

 A33336

 A3D6D4

 A32226

 A3E6E4

 A31217

 A3F6F3

 A30207

 A3FFFF

 A30005

Harmonies

Analogous

The Analogous color harmony consists of three colors that are next to each other on the color wheel.



9F8490



A38485



A0867B

Triad

The Triadic color harmony groups three colors that are evenly spaced from another and form a triangle on the color wheel.



A38485



80907C



7A8EA1

Complementary

The Complementary color scheme is a pair of colors which are on the opposite of each other on the color wheel.



A38485



84A3A2

Split Complementary

Split-complementary colors differ from the complementary color scheme. The scheme consists of three colors, the original color and two neighbors of the complement color.



71919B



A38485



759287

Square

The Square scheme is like the rectangle color scheme, but the four colors are evenly spaced on the color wheel.



A38485



8D8D76



6F9292



888AA0

Rectangle

The Rectangle color scheme consists of four colors that form a rectangle on the color wheel.



A38485



9C8877



6F9292



768FA0

Sweetspot

The Sweet Spot groups the original color and five complimentary colors.



A38485



D4C7C7



A284A3



6B6464



EBEBEB



6B6B6B

Same Dimension

The Same Dimension uses a secret algorithm to generate beautiful new colors.



A38485



D4A3A5



A39284



52494A



910005



120001

Inverse Universe

The Inverse Universe completely reimagines the original color for something new.



A38485



D4A3A5



8495A3



52494A



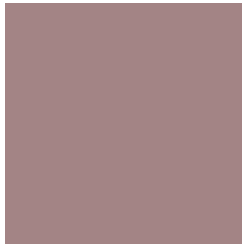
910005



120001

Previews

White Background



This preview shows how the Hex color A38485 looks on a white background.

Color Contrast Check

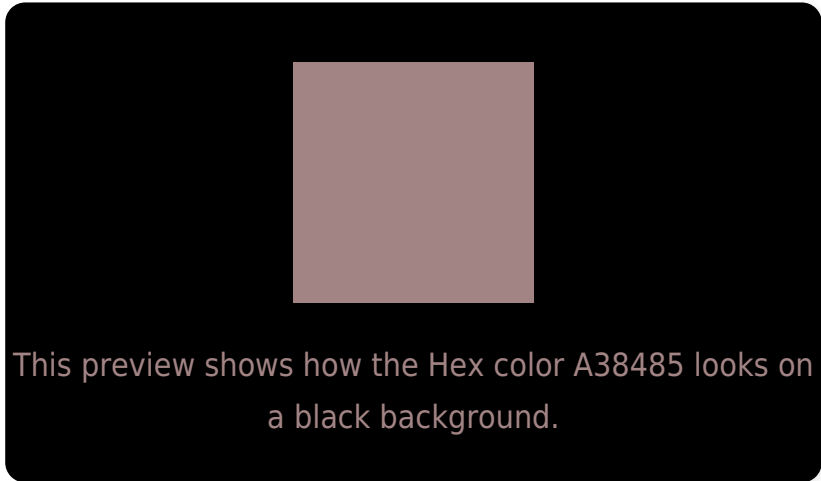
Large Text (above 18pt) WCAG AA ✓ Pass

Any Text WCAG AA × Fail

Large Text (above 18pt) WCAG AAA × Fail

Any Text WCAG AAA × Fail

Black Background



Color Contrast Check

Large Text (above 18pt) WCAG AA ✓ Pass

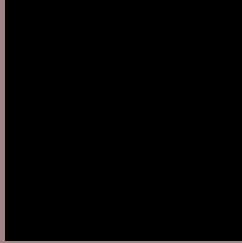
Any Text WCAG AA ✓ Pass

Large Text (above 18pt) WCAG AAA ✓ Pass

Any Text WCAG AAA × Fail

If you want to check with other color combinations, try the [Color Contrast Checker](#).

Hex A38485 Background



This preview shows how black text looks on a background with the Hex color A38485.



This preview shows how white text looks on a background with the Hex color A38485.

Color Blindness Simulation

Color vision deficiency is a very complex topic, and I could not describe the different causes any better than Wikipedia does, so if you want to learn more, you should check out their [article about color blindness](#).


Dichromacy



Original Color
A38485

Protanopia
8F8B89

Deuteranopia
9C8784



Tritanopia
A4838D

Trichromacy



Original Color
A38485

Protanomaly
968888

Deuteranomaly
9F8684

Tritanomaly
A4838A

Monochromacy



Original Color
A38485

Achromatopsia
8D8D8D

Achromatomaly
958A8A

CSS Examples

Text

The CSS property to change the color of the text to Hex A38485 is called "color". The color property can be set on classes, ids or directly on the HTML element.

This example shows how text in the color #A38485 looks like.

```
.text, #text, p{  
    color:#A38485  
}
```

If you want to add a text shadow in that color use the text-shadow property, you can generate a text shadow directly with our [CSS Text Shadow Generator](#).

Here you see how black text with a 4 pixel #A38485 colored shadow looks like.

```
.shadow{ text-shadow: 4px 4px 2px #A38485
}
```

Border

The CSS property to change the border of an element to Hex A38485 is called "border". The border property can be set on classes, ids or directly on the HTML element.

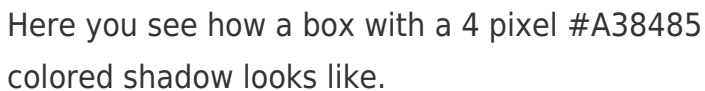
This example shows the color as border, it can be applied via the CSS property "border" or "border-color".

```
.border, #border, table{ border:4px solid
#A38485 }
```

If only the border color should be changed use the property `border-color`.

```
.border{ border-color:#A38485 }
```

If you want to add a box shadow in that color use:



Here you see how a box with a 4 pixel `#A38485` colored shadow looks like.

```
.boxshadow{ -moz-box-shadow:4px 4px 4px  
4px #A38485; -webkit-box-shadow:4px 4px  
4px 4px #A38485; box-shadow:4px 4px 4px  
4px #A38485 }
```

Background

The CSS property to change the background color of an element to Hex A38485 is called "background". The background property can be set on classes, ids or directly on the HTML element.

```
.background, #background, body{  
background:#A38485 }
```

If only the background color should be changed can be used:

```
.background{ background-color:#A38485 }
```

This example shows the color as background, it is applied via the CSS property "background".

To optimize and compress your CSS code, you can use our [online CSS compressor and optimizer](#) based on csstidy. If you want to create a linear or radial gradient as background or border, check our [CSS Gradient Generator](#).

Hey! You found this booklet interesting? Support Converting Colors with the new Membership Option!

The pro membership hides all ads, plus gives you double the colors in the color bucket, and more awesome pro features!

[Learn more, Memberships starting at \\$2.50/m!](#)

**Follow me
on Twitter!**

@ConvertingColor