

# Converting Colors

Hex(A3949C)

Have a look what the booklet for  
Hex(A3949C) contains.

<b>Hex(A3949C)</b> .....	3
<b><i>Conversions</i></b> .....	4
<b><i>Details</i></b> .....	6
<b><i>Harmonies</i></b> .....	11
<b><i>Previews</i></b> .....	23
<b><i>Color Blindness Simulation</i></b> .....	26
<b><i>CSS Examples</i></b> .....	29

# **Color**

**Hex(A3949C)**

# Conversions

## Conversions Part 1

<b>Format</b>	<b>Color</b>
Hex	A3949C
RGB	163, 148, 156
RGB Percent	64%, 58%, 61%
CMY	0.3608, 0.4196, 0.3882
CMYK	0.00, 0.09, 0.04, 0.36
HSL	328°, 8%, 61%
HSV	328°, 9%, 64%
XYZ	31.6949, 31.3666, 35.8364
YIQ	153.3970, 6.3720, 5.6680

# Conversions

## Conversions Part 2

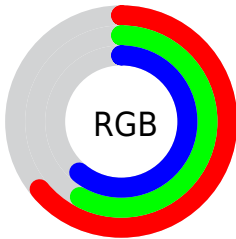
<b>Format</b>	<b>Color</b>
<a href="#">RYB</a>	<a href="#">163, 148, 156</a>
Decimal	<a href="#">10720412</a>
CIELab	<a href="#">62.82, 7.00, -2.20</a>
CIELCh	<a href="#">63, 7.339, 342.582</a>
Yxy	<a href="#">31.3666, 0.3205, 0.3172</a>
Android (android.graphics.Color)	<a href="#">4288910492</a> (0xFFA3949C)
YUV	<a href="#">153.3970, 1.2833, 8.4218</a>
Hunter-Lab	<a href="#">56.0059, 3.0065, 1.2664</a>

# Details

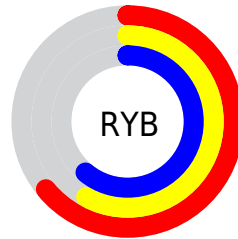
The Hex color **A3949C** is a light color, and the websafe version is hex **999999**. A complement of this color would be **94A39B**, and the grayscale version is **999999**.

A 20% lighter version of the original color is **DACAD2**, and **6F6169** is the 20% darker color. If you saturate the color by 10%, you get **A38494**, and if you desaturate by 10%, it is **A3A4A4**.

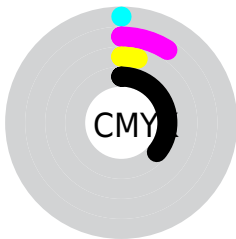
# Distribution



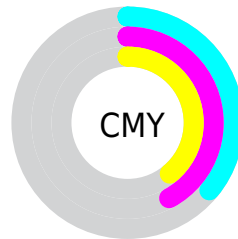
- Red (64%)
- Green (58%)
- Blue (61%)



- Red (64%)
- Yellow (58%)
- Blue (61%)



- Cyan (0%)
- Magenta (9%)
- Yellow (4%)
- Black (36%)



- Cyan (36%)
- Magenta (42%)
- Yellow (39%)

# Brightness & Saturation Gradients

These gradients show how the Hex color A3949C changes by changing the brightness by 10 percent. The first figure shows a shift by +10% for each color and the second figure -10%.

Similar to the brightness gradients but the following saturation gradients show a change of the Hex color A3949C by changing the saturation by 10% instead.





A3949C



A3949C

FFFFFF



897A82



DACAD2



6F6169



F6E6EF



574A51



40333A



291E24



16050F



000000



A3949C



A3949C



A38494



A3A4A4

 A3738D

 A3B5AB

 A36385

 A3C5B3

 A3537E

 A3D5BA

 A34376

 A3E6C2

 A3326E

 A3F6CA

 A32267

 A3FFD1

 A3125F

 A3FFD9

 A30158

 A3FFE0

# Harmonies

## Analogous

The Analogous color harmony consists of three colors that are next to each other on the color wheel.



9D95A2



A3949C



A69495

# Triad

The Triadic color harmony groups three colors that are evenly spaced from another and form a triangle on the color wheel.



A3949C



9B988B



899BA0

# Complementary

The Complementary color scheme is a pair of colors which are on the opposite of each other on the color wheel.



A3949C



94A39B

# Split Complementary

Split-complementary colors differ from the complementary color scheme. The scheme consists of three colors, the original color and two neighbors of the complement color.



889C9B



A3949C



939A8E

# Square

The Square scheme is like the rectangle color scheme, but the four colors are evenly spaced on the color wheel.



A3949C



A1968C



8C9C94



8D9AA4

# Rectangle

The Rectangle color scheme consists of four colors that form a rectangle on the color wheel.



A3949C



A69491



8C9C94



889C9F



# Sweetspot

The Sweet Spot groups the original color and five complimentary colors.



A3949C



D4CDD1



9B94A3



6B6769



EBEBEB



6B6B6B



# Same Dimension

The Same Dimension uses a secret algorithm to generate beautiful new colors.



A3949C



D4BCC9



A39495



52494E



91004E



12000A



# Inverse Universe

The Inverse Universe completely reimagines the original color for something new.



A3949C



D4BCC9



94A3A3



52494E



91004E

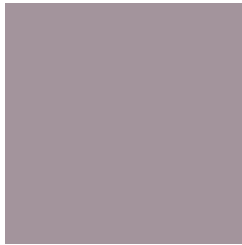


12000A



# Previews

## White Background



This preview shows how the Hex color A3949C looks on a white background.

## Color Contrast Check

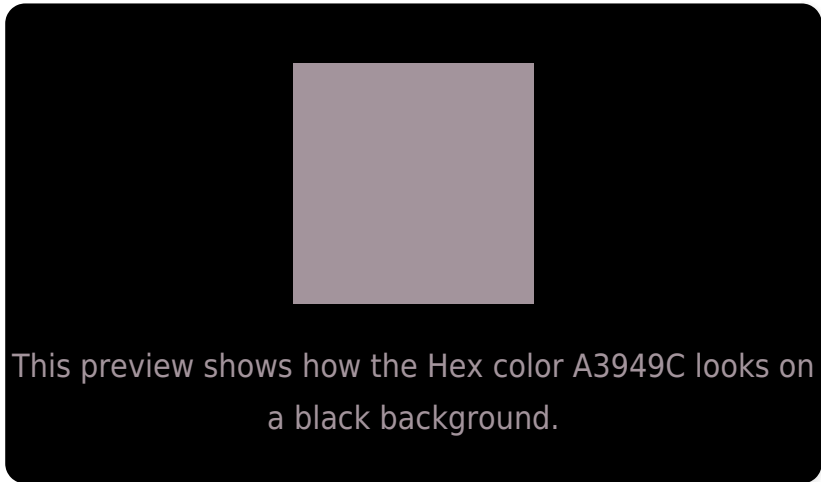
Large Text (above 18pt) WCAG AA × Fail

Any Text WCAG AA × Fail

Large Text (above 18pt) WCAG AAA × Fail

Any Text WCAG AAA × Fail

# Black Background



## Color Contrast Check

Large Text (above 18pt) WCAG AA ✓ Pass

Any Text WCAG AA ✓ Pass

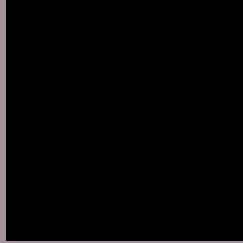
Large Text (above 18pt) WCAG AAA ✓ Pass

Any Text WCAG AAA ✓ Pass

If you want to check with other color combinations, try the [Color Contrast Checker](#).



## Hex A3949C Background



This preview shows how black text looks on a background with the Hex color A3949C.



This preview shows how white text looks on a background with the Hex color A3949C.

# Color Blindness Simulation

Color vision deficiency is a very complex topic, and I could not describe the different causes any better than Wikipedia does, so if you want to learn more, you should check out their [article about color blindness](#).

## Dichromacy



**Original Color**  
A3949C

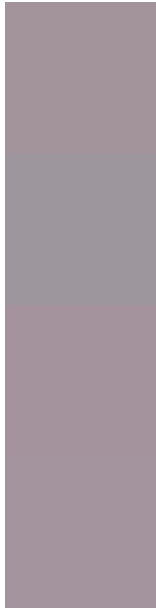
**Protanopia**  
99979E

**Deuteranopia**  
A5939C



**Tritanopia**  
A3949F

# Trichromacy



**Original Color**  
A3949C

**Protanomaly**  
9D969D

**Deuteranomaly**  
A4939C

**Tritanomaly**  
A3949E

# Monochromacy



**Original Color**  
A3949C

**Achromatopsia**  
999999

**Achromatomaly**  
9D979A

# CSS Examples

## Text

The CSS property to change the color of the text to Hex A3949C is called "color". The color property can be set on classes, ids or directly on the HTML element.

This example shows how text in the color #A3949C looks like.

```
.text, #text, p{  
    color:#A3949C  
}
```

If you want to add a text shadow in that color use the text-shadow property, you can generate a text shadow directly with our [CSS Text Shadow Generator](#).

Here you see how black text with a 4 pixel #A3949C colored shadow looks like.

```
.shadow{ text-shadow: 4px 4px 2px #A3949C
}
```

## Border

The CSS property to change the border of an element to Hex A3949C is called "border". The border property can be set on classes, ids or directly on the HTML element.

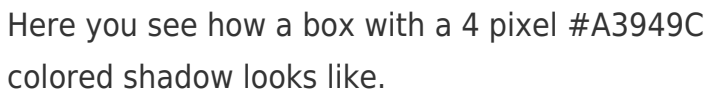
This example shows the color as border, it can be applied via the CSS property "border" or "border-color".

```
.border, #border, table{ border:4px solid
#A3949C }
```

If only the border color should be changed use the property `border-color`.

```
.border{ border-color:#A3949C }
```

If you want to add a box shadow in that color use:



Here you see how a box with a 4 pixel #A3949C colored shadow looks like.

```
.boxshadow{ -moz-box-shadow:4px 4px 4px  
4px #A3949C; -webkit-box-shadow:4px 4px  
4px 4px #A3949C; box-shadow:4px 4px 4px  
4px #A3949C }
```

# Background

The CSS property to change the background color of an element to Hex A3949C is called "background". The background property can be set on classes, ids or directly on the HTML element.

```
.background, #background, body{  
background:#A3949C }
```

If only the background color should be changed can be used:

```
.background{ background-color:#A3949C }
```

This example shows the color as background, it is applied via the CSS property "background".

To optimize and compress your CSS code, you can use our [online CSS compressor and optimizer](#) based on csstidy. If you want to create a linear or radial gradient as background or border, check our [CSS Gradient Generator](#).



Hey! You found this booklet interesting? Support Converting Colors with the new Membership Option!

The pro membership hides all ads, plus gives you double the colors in the color bucket, and more awesome pro features!

**[Learn more, Memberships starting at \\$2.50/m!](#)**

**Follow me  
on Twitter!**

@ConvertingColor