

Converting Colors

Hex(A44263)

Have a look what the booklet for
Hex(A44263) contains.

Hex(A44263)	3
<i>Conversions</i>	4
<i>Details</i>	6
<i>Harmonies</i>	11
<i>Previews</i>	23
<i>Color Blindness Simulation</i>	26
<i>CSS Examples</i>	29

Color

Hex(A44263)

Conversions

Conversions Part 1

Format	Color
Hex	A44263
RGB	164, 66, 99
RGB Percent	64%, 26%, 39%
CMY	0.3569, 0.7412, 0.6118
CMYK	0.00, 0.60, 0.40, 0.36
HSL	340°, 43%, 45%
HSV	340°, 60%, 64%
XYZ	19.5102, 12.6898, 13.2255
YIQ	99.0640, 47.8150, 31.0390

Conversions

Conversions Part 2

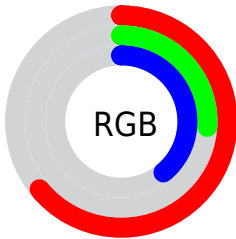
Format	Color
R_{YB}	164, 66, 99
Decimal	10764899
CIE _{Lab}	42.29, 43.69, 1.46
CIE _{LCh}	42, 43.713, 1.908
Yxy	12.6898, 0.4295, 0.2794
Android (android.graphics.Color)	4288954979 (0xFFA44263)
YUV	99.0640, -0.0316, 56.9489
Hunter-Lab	35.6227, 35.4227, 2.9237

Details

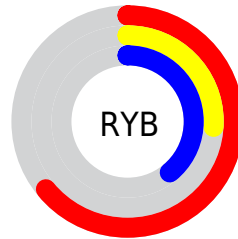
The Hex color **A44263** is a dark color, and the websafe version is hex **993366**. A complement of this color would be **42A483**, and the grayscale version is **636363**.

A 20% lighter version of the original color is **DE7696**, and **6C0735** is the 20% darker color. If you saturate the color by 10%, you get **A43258**, and if you desaturate by 10%, it is **A4526E**.

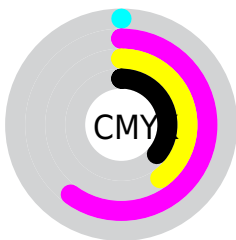
Distribution



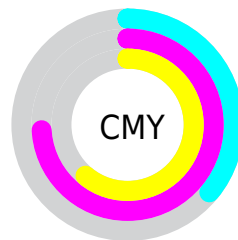
- Red (64%)
- Green (26%)
- Blue (39%)



- Red (64%)
- Yellow (26%)
- Blue (39%)



- Cyan (0%)
- Magenta (60%)
- Yellow (40%)
- Black (36%)



- Cyan (36%)
- Magenta (74%)
- Yellow (61%)

Brightness & Saturation Gradients

These gradients show how the Hex color A44263 changes by changing the brightness by 10 percent. The first figure shows a shift by +10% for each color and the second figure -10%.

Similar to the brightness gradients but the following saturation gradients show a change of the Hex color A44263 by changing the saturation by 10% instead.

 A44263

 A44263

FFFFFF

 88284B

 DE7696

 6C0735

 FC91B0

 510020

 FFADCC

 390007

 FFC9E8

 160000

 FFE5FF

 000000

 A44263

 A44263

 A43258

 A4526E

 A4214D

 A46379

 A41142

 A47384

 A40037

 A4848F

 A49499

 A4A4A4

 A4B5AF

 A4C5BA

 A4D6C5

Harmonies

Analogous

The Analogous color harmony consists of three colors that are next to each other on the color wheel.



914A86



A44263



A34840

Triad

The Triadic color harmony groups three colors that are evenly spaced from another and form a triangle on the color wheel.



A44263



506D22



0070A3

Complementary

The Complementary color scheme is a pair of colors which are on the opposite of each other on the color wheel.



A44263



42A483

Split Complementary

Split-complementary colors differ from the complementary color scheme. The scheme consists of three colors, the original color and two neighbors of the complement color.



007589



A44263



157340

Square

The Square scheme is like the rectangle color scheme, but the four colors are evenly spaced on the color wheel.



A44263



756314



007565



0067AC

Rectangle

The Rectangle color scheme consists of four colors that form a rectangle on the color wheel.



A44263



98502C



007565



00729C

Sweetspot

The Sweet Spot groups the original color and five complimentary colors.



A44263



D6B0BD



8242A4



6B545B



EBEBEB



6B6B6B

Same Dimension

The Same Dimension uses a secret algorithm to generate beautiful new colors.



A44263



D63C70



A45142



52494C



910031



120006

Inverse Universe

The Inverse Universe completely reimagines the original color for something new.



A44263



D63C70



4295A4



52494C



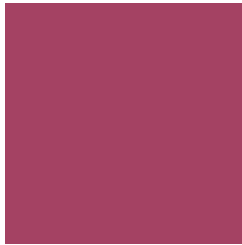
910031



120006

Previews

White Background



This preview shows how the Hex color A44263 looks on a white background.

Color Contrast Check

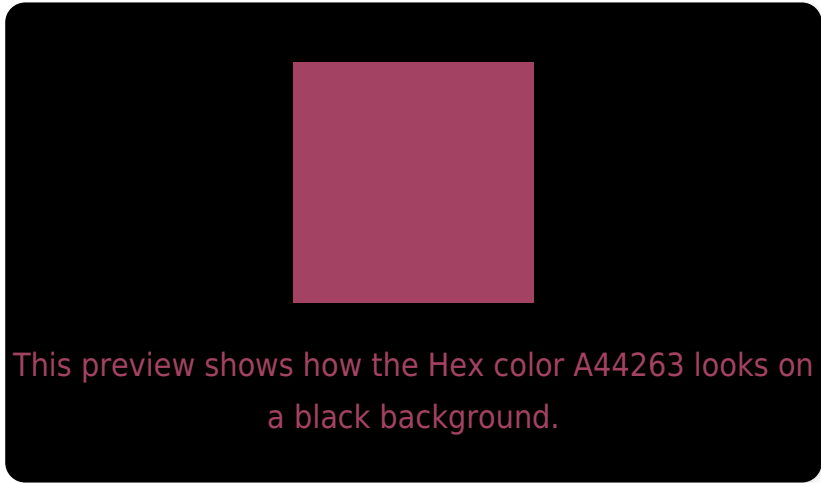
Large Text (above 18pt) WCAG AA ✓ Pass

Any Text WCAG AA ✓ Pass

Large Text (above 18pt) WCAG AAA ✓ Pass

Any Text WCAG AAA × Fail

Black Background



Color Contrast Check

Large Text (above 18pt) WCAG AA ✓ Pass

Any Text WCAG AA × Fail

Large Text (above 18pt) WCAG AAA × Fail

Any Text WCAG AAA × Fail

If you want to check with other color combinations, try the [Color Contrast Checker](#).

Hex A44263 Background



This preview shows how black text looks on a background with the Hex color A44263.

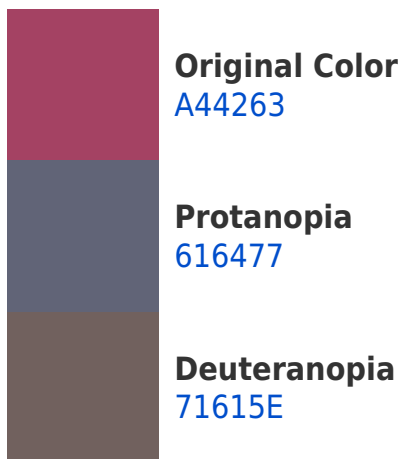


This preview shows how white text looks on a background with the Hex color A44263.

Color Blindness Simulation

Color vision deficiency is a very complex topic, and I could not describe the different causes any better than Wikipedia does, so if you want to learn more, you should check out their [article about color blindness](#).

Dichromacy





Tritanopia
A2474B

Trichromacy



Original Color
A44263

Protanomaly
795870

Deuteranomaly
845660

Tritanomaly
A34554

Monochromacy



Original Color
A44263

Achromatopsia
636363

Achromatomaly
7B5763

CSS Examples

Text

The CSS property to change the color of the text to Hex A44263 is called "color". The color property can be set on classes, ids or directly on the HTML element.

This example shows how text in the color #A44263 looks like.

```
.text, #text, p{  
    color:#A44263  
}
```

If you want to add a text shadow in that color use the text-shadow property, you can generate a text shadow directly with our [CSS Text Shadow Generator](#).

Here you see how black text with a 4 pixel #A44263 colored shadow looks like.

```
.shadow{ text-shadow: 4px 4px 2px #A44263  
}
```

Border

The CSS property to change the border of an element to Hex A44263 is called "border". The border property can be set on classes, ids or directly on the HTML element.

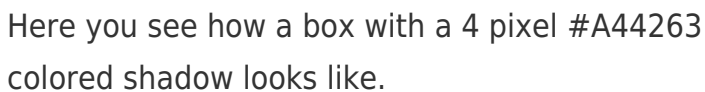
This example shows the color as border, it can be applied via the CSS property "border" or "border-color".

```
.border, #border, table{ border:4px solid  
#A44263 }
```

If only the border color should be changed use the property `border-color`.

```
.border{ border-color:#A44263 }
```

If you want to add a box shadow in that color use:



Here you see how a box with a 4 pixel #A44263 colored shadow looks like.

```
.boxshadow{ -moz-box-shadow:4px 4px 4px  
4px #A44263; -webkit-box-shadow:4px 4px  
4px 4px #A44263; box-shadow:4px 4px 4px  
4px #A44263 }
```

Background

The CSS property to change the background color of an element to Hex A44263 is called "background". The background property can be set on classes, ids or directly on the HTML element.

```
.background, #background, body{  
background:#A44263 }
```

If only the background color should be changed can be used:

```
.background{ background-color:#A44263 }
```

This example shows the color as background, it is applied via the CSS property "background".

To optimize and compress your CSS code, you can use our [online CSS compressor and optimizer](#) based on csstidy. If you want to create a linear or radial gradient as background or border, check our [CSS Gradient Generator](#).

Hey! You found this booklet interesting? Support Converting Colors with the new Membership Option!

The pro membership hides all ads, plus gives you double the colors in the color bucket, and more awesome pro features!

[Learn more, Memberships starting at \\$2.50/m!](#)

**Follow me
on Twitter!**

@ConvertingColor