

# Converting Colors

Hex(A47E57)

Have a look what the booklet for  
Hex(A47E57) contains.

<b>Hex(A47E57)</b> .....	3
<b><i>Conversions</i></b> .....	4
<b><i>Details</i></b> .....	6
<b><i>Harmonies</i></b> .....	11
<b><i>Previews</i></b> .....	23
<b><i>Color Blindness Simulation</i></b> .....	26
<b><i>CSS Examples</i></b> .....	29

**Color**

**Hex(A47E57)**

# Conversions

## Conversions Part 1

<b>Format</b>	<b>Color</b>
Hex	A47E57
RGB	164, 126, 87
RGB Percent	64%, 49%, 34%
CMY	0.3569, 0.5059, 0.6588
CMYK	0.00, 0.23, 0.47, 0.36
HSL	30°, 31%, 49%
HSV	30°, 47%, 64%
XYZ	24.4910, 23.5023, 12.2624
YIQ	132.9160, 35.1670, -4.0730

# Conversions

## Conversions Part 2

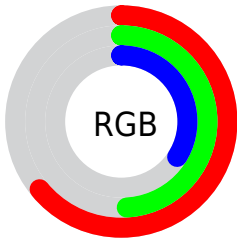
<b>Format</b>	<b>Color</b>
<b>RYB</b>	162, 164, 87
Decimal	10780247
CIELab	55.59, 9.61, 26.84
CIELCh	56, 28.509, 70.302
Yxy	23.5023, 0.4065, 0.3900
Android (android.graphics.Color)	4288970327 (0xFFA47E57)
YUV	132.9160, -22.6366, 27.2607
Hunter-Lab	48.4792, 5.3370, 18.9385

# Details

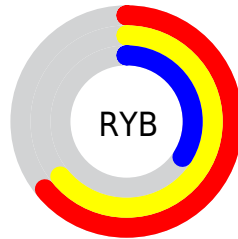
The Hex color **A47E57** is a dark color, and the websafe version is hex **996633**. A complement of this color would be **577DA4**, and the grayscale version is **858585**.

A 20% lighter version of the original color is **DDB389**, and **6E4D29** is the 20% darker color. If you saturate the color by 10%, you get **A47647**, and if you desaturate by 10%, it is **A48667**.

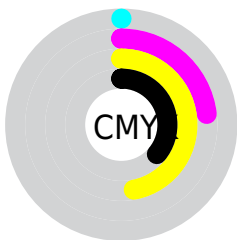
# Distribution



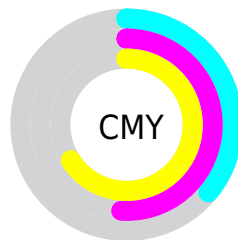
- Red (64%)
- Green (49%)
- Blue (34%)



- Red (64%)
- Yellow (64%)
- Blue (34%)



- Cyan (0%)
- Magenta (23%)
- Yellow (47%)
- Black (36%)



- Cyan (36%)
- Magenta (51%)
- Yellow (66%)

# Brightness & Saturation Gradients

These gradients show how the Hex color A47E57 changes by changing the brightness by 10 percent. The first figure shows a shift by +10% for each color and the second figure -10%.

Similar to the brightness gradients but the following saturation gradients show a change of the Hex color A47E57 by changing the saturation by 10% instead.





A47E57



A47E57

FFFFFF



89653F



DDB389



6E4D29



FACEA4



543613



FFEABF



3C2100



FFFFDB



230C00



FFFFFF8



000000



A47E57



A47E57



A47647



A48667



A46E36



A48E78

 A46626

 A49688

 A45E15

 A49E99

 A45605

 A4A6A9

 A45300

 A4AFB9

 A4B7CA

 A4BFDA

 A4C7EB

# Harmonies

## Analogous

The Analogous color harmony consists of three colors that are next to each other on the color wheel.



B37666



A47E57



8E8654

# Triad

The Triadic color harmony groups three colors that are evenly spaced from another and form a triangle on the color wheel.



A47E57



37938D



937CAB

# Complementary

The Complementary color scheme is a pair of colors which are on the opposite of each other on the color wheel.



A47E57



577DA4

# Split Complementary

Split-complementary colors differ from the complementary color scheme. The scheme consists of three colors, the original color and two neighbors of the complement color.



7085B6



A47E57



2D91A4

# Square

The Square scheme is like the rectangle color scheme, but the four colors are evenly spaced on the color wheel.



A47E57



549174



498CB3



AB7496

# Rectangle

The Rectangle color scheme consists of four colors that form a rectangle on the color wheel.



A47E57



7C8B5A



498CB3



897FB0



# Sweetspot

The Sweet Spot groups the original color and five complimentary colors.



A47E57



D6C7B8



A4577E



6B6259



EBEBEB



6B6B6B



# Same Dimension

The Same Dimension uses a secret algorithm to generate beautiful new colors.



A47E57



D69B5E



A4A457



524E49



914A00



120900



# Inverse Universe

The Inverse Universe completely reimagines the original color for something new.



577DA4



5E99D6



5757A4



494D52



004891

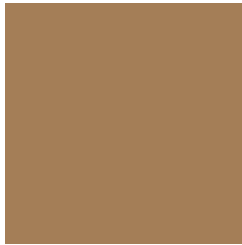


000912



# Previews

## White Background



This preview shows how the Hex color A47E57 looks on a white background.

## Color Contrast Check

Large Text (above 18pt) WCAG AA ✓ Pass

Any Text WCAG AA × Fail

Large Text (above 18pt) WCAG AAA × Fail

Any Text WCAG AAA × Fail

# Black Background



## Color Contrast Check

Large Text (above 18pt) WCAG AA ✓ Pass

Any Text WCAG AA ✓ Pass

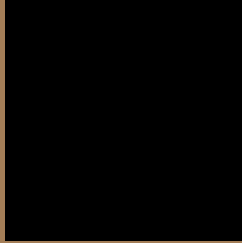
Large Text (above 18pt) WCAG AAA ✓ Pass

Any Text WCAG AAA × Fail

If you want to check with other color combinations, try the [Color Contrast Checker](#).



## Hex A47E57 Background



This preview shows how black text looks on a background with the Hex color A47E57.



This preview shows how white text looks on a background with the Hex color A47E57.

# Color Blindness Simulation

Color vision deficiency is a very complex topic, and I could not describe the different causes any better than Wikipedia does, so if you want to learn more, you should check out their [article about color blindness](#).

## Dichromacy



**Original Color**  
A47E57

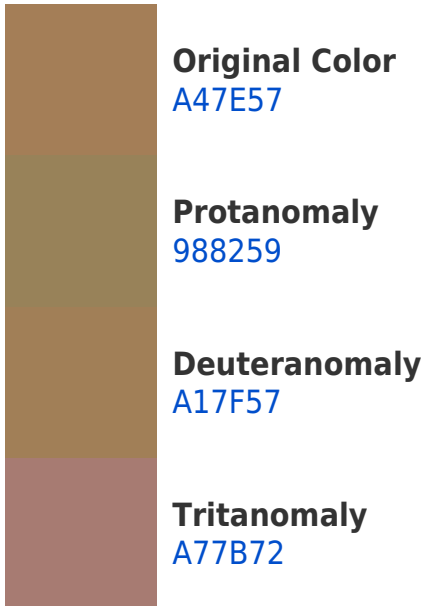
**Protanopia**  
91855A

**Deuteranopia**  
A08057

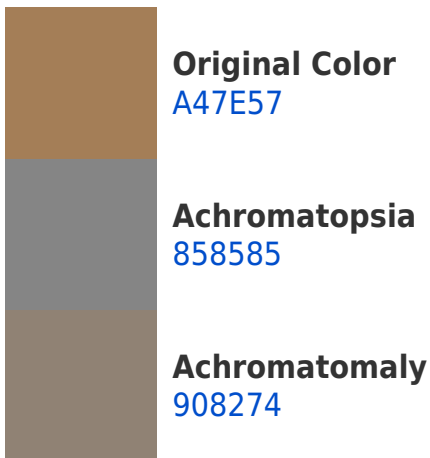


**Tritanopia**  
A87982

# Trichromacy



# Monochromacy



# CSS Examples

## Text

The CSS property to change the color of the text to Hex A47E57 is called "color". The color property can be set on classes, ids or directly on the HTML element.

This example shows how text in the color #A47E57 looks like.

```
.text, #text, p{  
    color:#A47E57  
}
```

If you want to add a text shadow in that color use the text-shadow property, you can generate a text shadow directly with our [CSS Text Shadow Generator](#).

Here you see how black text with a 4 pixel #A47E57 colored shadow looks like.

```
.shadow{ text-shadow: 4px 4px 2px #A47E57  
}
```

## Border

The CSS property to change the border of an element to Hex A47E57 is called "border". The border property can be set on classes, ids or directly on the HTML element.

This example shows the color as border, it can be applied via the CSS property "border" or "border-color".

```
.border, #border, table{ border:4px solid  
#A47E57 }
```

If only the border color should be changed use the property `border-color`.

```
.border{ border-color:#A47E57 }
```

If you want to add a box shadow in that color use:

Here you see how a box with a 4 pixel #A47E57 colored shadow looks like.

```
.boxshadow{ -moz-box-shadow:4px 4px 4px  
4px #A47E57; -webkit-box-shadow:4px 4px  
4px 4px #A47E57; box-shadow:4px 4px 4px  
4px #A47E57 }
```

# Background

The CSS property to change the background color of an element to Hex A47E57 is called "background". The background property can be set on classes, ids or directly on the HTML element.

```
.background, #background, body{  
background:#A47E57 }
```

If only the background color should be changed can be used:

```
.background{ background-color:#A47E57 }
```

This example shows the color as background, it is applied via the CSS property "background".

To optimize and compress your CSS code, you can use our [online CSS compressor and optimizer](#) based on csstidy. If you want to create a linear or radial gradient as background or border, check our [CSS Gradient Generator](#).



Hey! You found this booklet interesting? Support Converting Colors with the new Membership Option!

The pro membership hides all ads, plus gives you double the colors in the color bucket, and more awesome pro features!

**[Learn more, Memberships starting at \\$2.50/m!](#)**

**Follow me  
on Twitter!**

@ConvertingColor