

Converting Colors

Hex(A48484)

Have a look what the booklet for
Hex(A48484) contains.

Hex(A48484)	3
<i>Conversions</i>	4
<i>Details</i>	6
<i>Harmonies</i>	11
<i>Previews</i>	23
<i>Color Blindness Simulation</i>	26
<i>CSS Examples</i>	29

Color

Hex(A48484)

Conversions

Conversions Part 1

Format	Color
Hex	A48484
RGB	164, 132, 132
RGB Percent	64%, 52%, 52%
CMY	0.3569, 0.4824, 0.4824
CMYK	0.00, 0.20, 0.20, 0.36
HSL	0°, 15%, 58%
HSV	0°, 20%, 64%
XYZ	27.7260, 26.0610, 25.3988
YIQ	141.5680, 19.0720, 6.7840

Conversions

Conversions Part 2

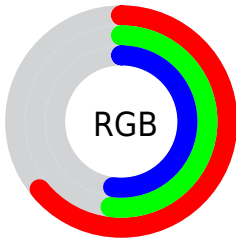
Format	Color
R_YB	164, 132, 132
Decimal	10781828
CIE _{Lab}	58.09, 12.23, 4.63
CIE _{LCh}	58, 13.078, 20.753
Yxy	26.0610, 0.3501, 0.3291
Android (android.graphics.Color)	4288971908 (0xFFA48484)
YUV	141.5680, -4.7170, 19.6729
Hunter-Lab	51.0500, 7.6085, 6.2366

Details

The Hex color **A48484** is a dark color, and the websafe version is hex **CC9999**. A complement of this color would be **84A4A4**, and the grayscale version is **8E8E8E**.

A 20% lighter version of the original color is **DBB9B9**, and **705253** is the 20% darker color. If you saturate the color by 10%, you get **A47474**, and if you desaturate by 10%, it is **A49494**.

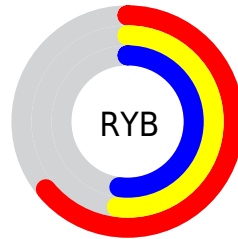
Distribution



Red (64%)

Green (52%)

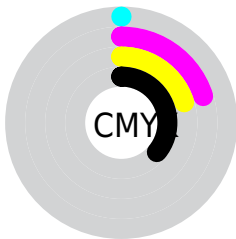
Blue (52%)



Red (64%)

Yellow (52%)

Blue (52%)

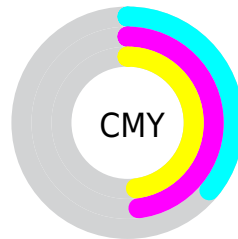


Cyan (0%)

Magenta (20%)

Yellow (20%)

Black (36%)



Cyan (36%)

Magenta (48%)

Yellow (48%)

Brightness & Saturation Gradients

These gradients show how the Hex color A48484 changes by changing the brightness by 10 percent. The first figure shows a shift by +10% for each color and the second figure -10%.

Similar to the brightness gradients but the following saturation gradients show a change of the Hex color A48484 by changing the saturation by 10% instead.



A48484



A48484

FFFFFF



896B6B



DBB9B9



705253



F8D5D5



573B3C



FFF1F1



3F2526



281111



0A0000



000000



A48484



A48484



A47474



A49494

 A46363

 A4A5A5

 A45353

 A4B5B5

 A44242

 A4C6C6

 A43232

 A4D6D6

 A42222

 A4E6E6

 A41111

 A4F7F7

 A40101

 A4FFFF

 A40000

Harmonies

Analogous

The Analogous color harmony consists of three colors that are next to each other on the color wheel.



A18490



A48484



A1867A

Triad

The Triadic color harmony groups three colors that are evenly spaced from another and form a triangle on the color wheel.



A48484



7F907D



7B8EA2

Complementary

The Complementary color scheme is a pair of colors which are on the opposite of each other on the color wheel.



A48484



84A4A4

Split Complementary

Split-complementary colors differ from the complementary color scheme. The scheme consists of three colors, the original color and two neighbors of the complement color.



70919D



A48484



749288

Square

The Square scheme is like the rectangle color scheme, but the four colors are evenly spaced on the color wheel.



A48484



8C8D76



6E9293



898AA1

Rectangle

The Rectangle color scheme consists of four colors that form a rectangle on the color wheel.



A48484



9C8876



6E9293



778FA1

Sweetspot

The Sweet Spot groups the original color and five complimentary colors.



A48484



D6C9C9



A484A4



6B6464



EBEBEB



6B6B6B

Same Dimension

The Same Dimension uses a secret algorithm to generate beautiful new colors.



A48484



D6A5A5



A49484



524949



910000



120000

Inverse Universe

The Inverse Universe completely reimagines the original color for something new.



84A4A4



A5D6D6



8494A4



495252



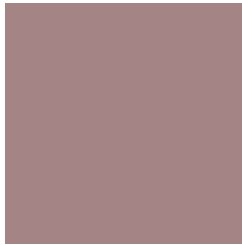
009191



001212

Previews

White Background



This preview shows how the Hex color A48484 looks on a white background.

Color Contrast Check

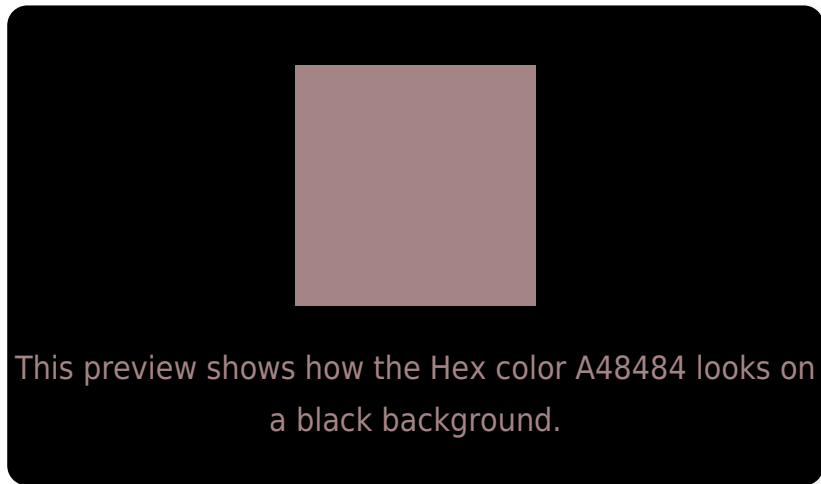
Large Text (above 18pt) WCAG AA ✓ Pass

Any Text WCAG AA ✗ Fail

Large Text (above 18pt) WCAG AAA ✗ Fail

Any Text WCAG AAA ✗ Fail

Black Background



Color Contrast Check

Large Text (above 18pt) WCAG AA ✓ Pass

Any Text WCAG AA ✓ Pass

Large Text (above 18pt) WCAG AAA ✓ Pass

Any Text WCAG AAA × Fail

If you want to check with other color combinations, try the [Color Contrast Checker](#).

Hex A48484 Background



This preview shows how black text looks on a background with the Hex color A48484.



This preview shows how white text looks on a background with the Hex color A48484.

Color Blindness Simulation

Color vision deficiency is a very complex topic, and I could not describe the different causes any better than Wikipedia does, so if you want to learn more, you should check out their [article about color blindness](#).


Dichromacy



Original Color
A48484

Protanopia
8F8B88

Deuteranopia
9C8783



Tritanopia
A5838D

Trichromacy



Original Color
A48484

Protanomaly
978887

Deuteranomaly
9F8683

Tritanomaly
A5838A

Monochromacy



Original Color
A48484

Achromatopsia
8E8E8E

Achromatomaly
968A8A

CSS Examples

Text

The CSS property to change the color of the text to Hex A48484 is called "color". The color property can be set on classes, ids or directly on the HTML element.

This example shows how text in the color #A48484 looks like.

```
.text, #text, p{  
    color:#A48484  
}
```

If you want to add a text shadow in that color use the text-shadow property, you can generate a text shadow directly with our [CSS Text Shadow Generator](#).

Here you see how black text with a 4 pixel #A48484 colored shadow looks like.

```
.shadow{ text-shadow: 4px 4px 2px #A48484
}
```

Border

The CSS property to change the border of an element to Hex A48484 is called "border". The border property can be set on classes, ids or directly on the HTML element.

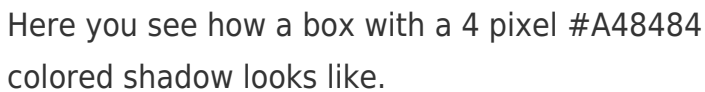
This example shows the color as border, it can be applied via the CSS property "border" or "border-color".

```
.border, #border, table{ border:4px solid
#A48484 }
```

If only the border color should be changed use the property `border-color`.

```
.border{ border-color:#A48484 }
```

If you want to add a box shadow in that color use:



Here you see how a box with a 4 pixel #A48484 colored shadow looks like.

```
.boxshadow{ -moz-box-shadow:4px 4px 4px  
4px #A48484; -webkit-box-shadow:4px 4px  
4px 4px #A48484; box-shadow:4px 4px 4px  
4px #A48484 }
```

Background

The CSS property to change the background color of an element to Hex A48484 is called "background". The background property can be set on classes, ids or directly on the HTML element.

```
.background, #background, body{  
background:#A48484 }
```

If only the background color should be changed can be used:

```
.background{ background-color:#A48484 }
```

This example shows the color as background, it is applied via the CSS property "background".

To optimize and compress your CSS code, you can use our [online CSS compressor and optimizer](#) based on csstidy. If you want to create a linear or radial gradient as background or border, check our [CSS Gradient Generator](#).

Hey! You found this booklet interesting? Support Converting Colors with the new Membership Option!

The pro membership hides all ads, plus gives you double the colors in the color bucket, and more awesome pro features!

[Learn more, Memberships starting at \\$2.50/m!](#)

**Follow me
on Twitter!**

@ConvertingColor