

Converting Colors

Hex(A48B6F)

Have a look what the booklet for
Hex(A48B6F) contains.

Hex(A48B6F)	3
<i>Conversions</i>	4
<i>Details</i>	6
<i>Harmonies</i>	11
<i>Previews</i>	23
<i>Color Blindness Simulation</i>	26
<i>CSS Examples</i>	29

Color

Hex(A48B6F)

Conversions

Conversions Part 1

Format	Color
Hex	A48B6F
RGB	164, 139, 111
RGB Percent	64%, 55%, 44%
CMY	0.3569, 0.4549, 0.5647
CMYK	0.00, 0.15, 0.32, 0.36
HSL	32°, 23%, 54%
HSV	32°, 32%, 64%
XYZ	27.4117, 27.5054, 18.9033
YIQ	143.2830, 23.8880, -3.4080

Conversions

Conversions Part 2

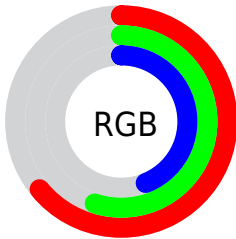
Format	Color
RYB	158, 164, 111
Decimal	10783599
CIELab	59.44, 5.18, 18.50
CIELCh	59, 19.206, 74.363
Yxy	27.5054, 0.3713, 0.3726
Android (android.graphics.Color)	4288973679 (0xFFA48B6F)
YUV	143.2830, -15.9155, 18.1688
Hunter-Lab	52.4456, 1.5165, 15.3417

Details

The Hex color **A48B6F** is a dark color, and the websafe version is hex **999966**. A complement of this color would be **6F88A4**, and the grayscale version is **8F8F8F**.

A 20% lighter version of the original color is **DCC0A3**, and **6F593F** is the 20% darker color. If you saturate the color by 10%, you get **A4835F**, and if you desaturate by 10%, it is **A4937F**.

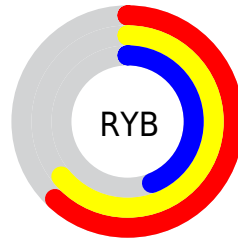
Distribution



Red (64%)

Green (55%)

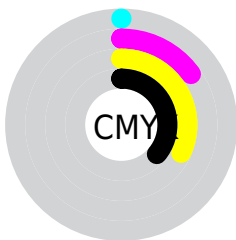
Blue (44%)



Red (62%)

Yellow (64%)

Blue (44%)

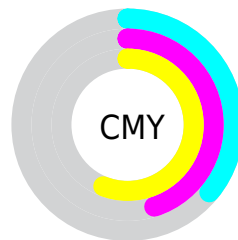


Cyan (0%)

Magenta (15%)

Yellow (32%)

Black (36%)



Cyan (36%)

Magenta (45%)

Yellow (56%)

Brightness & Saturation Gradients

These gradients show how the Hex color A48B6F changes by changing the brightness by 10 percent. The first figure shows a shift by +10% for each color and the second figure -10%.

Similar to the brightness gradients but the following saturation gradients show a change of the Hex color A48B6F by changing the saturation by 10% instead.

 A48B6F

 A48B6F

FFFFFF

 897256

 DCC0A3

 6F593F

 F9DCBE

 564229

 FFF9DA

 3E2C14

 FFFFF6

 281700

 070000

 000000

 A48B6F

 A48B6F

 A4835F

 A4937F

 A47C4E

 A49A90

 A4743E

 A4A2A0

 A46C2D

 A4AAB1

 A4641D

 A4B2C1

 A45D0D

 A4B9D1

 A45700

 A4C1E2

 A4C9F2

 A4D1FF

Harmonies

Analogous

The Analogous color harmony consists of three colors that are next to each other on the color wheel.



AF8678



A48B6F



93916E

Triad

The Triadic color harmony groups three colors that are evenly spaced from another and form a triangle on the color wheel.



A48B6F



619997



9C88A7

Complementary

The Complementary color scheme is a pair of colors which are on the opposite of each other on the color wheel.



A48B6F



6F88A4

Split Complementary

Split-complementary colors differ from the complementary color scheme. The scheme consists of three colors, the original color and two neighbors of the complement color.



868EB0



A48B6F



6297A6

Square

The Square scheme is like the rectangle color scheme, but the four colors are evenly spaced on the color wheel.



A48B6F



6E9885



7093AF



AB8499

Rectangle

The Rectangle color scheme consists of four colors that form a rectangle on the color wheel.



A48B6F



879473



7093AF



958AAB

Sweetspot

The Sweet Spot groups the original color and five complimentary colors.



A48B6F



D6CCC1



A46F89



6B655E



EBEBEB



6B6B6B

Same Dimension

The Same Dimension uses a secret algorithm to generate beautiful new colors.



A48B6F



D6AF83



A3A46F



524E49



914D00



120900

Inverse Universe

The Inverse Universe completely reimagines the original color for something new.



6F88A4



83AAD6



706FA4



494D52



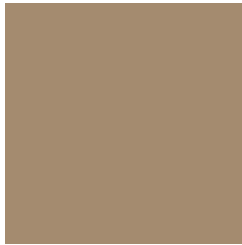
004591



000812

Previews

White Background



This preview shows how the Hex color A48B6F looks on a white background.

Color Contrast Check

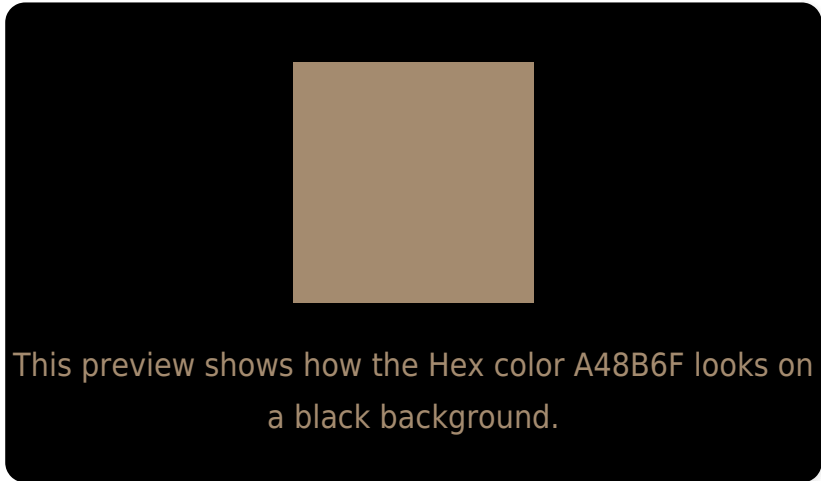
Large Text (above 18pt) WCAG AA ✓ Pass

Any Text WCAG AA × Fail

Large Text (above 18pt) WCAG AAA × Fail

Any Text WCAG AAA × Fail

Black Background



Color Contrast Check

Large Text (above 18pt) WCAG AA ✓ Pass

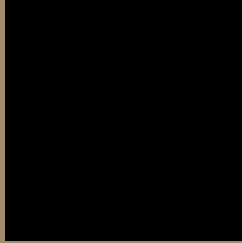
Any Text WCAG AA ✓ Pass

Large Text (above 18pt) WCAG AAA ✓ Pass

Any Text WCAG AAA × Fail

If you want to check with other color combinations, try the [Color Contrast Checker](#).

Hex A48B6F Background



This preview shows how black text looks on a background with the Hex color A48B6F.



This preview shows how white text looks on a background with the Hex color A48B6F.

Color Blindness Simulation

Color vision deficiency is a very complex topic, and I could not describe the different causes any better than Wikipedia does, so if you want to learn more, you should check out their [article about color blindness](#).


Dichromacy



Original Color
A48B6F

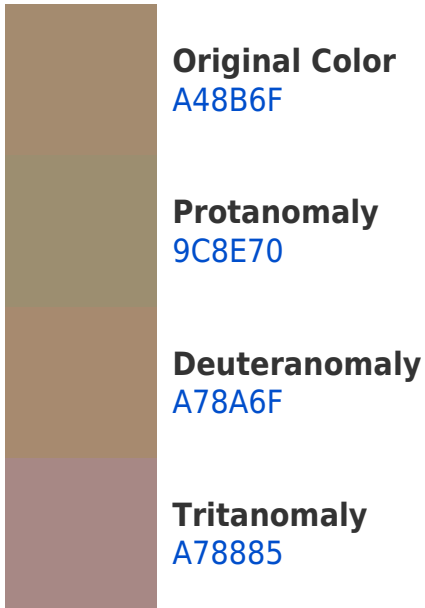
Protanopia
988F71

Deuteranopia
A8896F

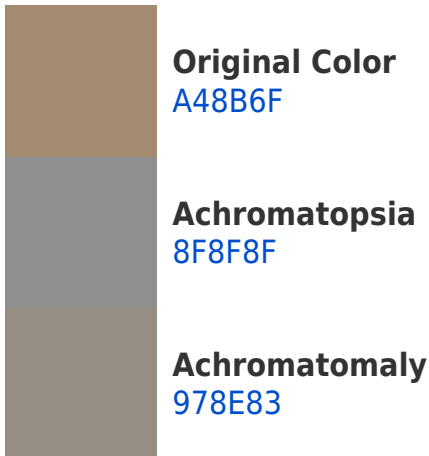


Tritanopia
A88691

Trichromacy



Monochromacy



CSS Examples

Text

The CSS property to change the color of the text to Hex A48B6F is called "color". The color property can be set on classes, ids or directly on the HTML element.

This example shows how text in the color #A48B6F looks like.

```
.text, #text, p{  
    color:#A48B6F  
}
```

If you want to add a text shadow in that color use the text-shadow property, you can generate a text shadow directly with our [CSS Text Shadow Generator](#).

Here you see how black text with a 4 pixel #A48B6F colored shadow looks like.

```
.shadow{ text-shadow: 4px 4px 2px #A48B6F
}
```

Border

The CSS property to change the border of an element to Hex A48B6F is called "border". The border property can be set on classes, ids or directly on the HTML element.

This example shows the color as border, it can be applied via the CSS property "border" or "border-color".

```
.border, #border, table{ border:4px solid
#A48B6F }
```

If only the border color should be changed use the property `border-color`.

```
.border{ border-color:#A48B6F }
```

If you want to add a box shadow in that color use:

Here you see how a box with a 4 pixel #A48B6F colored shadow looks like.

```
.boxshadow{ -moz-box-shadow:4px 4px 4px  
4px #A48B6F; -webkit-box-shadow:4px 4px  
4px 4px #A48B6F; box-shadow:4px 4px 4px  
4px #A48B6F }
```

Background

The CSS property to change the background color of an element to Hex A48B6F is called "background". The background property can be set on classes, ids or directly on the HTML element.

```
.background, #background, body{  
background:#A48B6F }
```

If only the background color should be changed can be used:

```
.background{ background-color:#A48B6F }
```

This example shows the color as background, it is applied via the CSS property "background".

To optimize and compress your CSS code, you can use our [online CSS compressor and optimizer](#) based on csstidy. If you want to create a linear or radial gradient as background or border, check our [CSS Gradient Generator](#).

Hey! You found this booklet interesting? Support Converting Colors with the new Membership Option!

The pro membership hides all ads, plus gives you double the colors in the color bucket, and more awesome pro features!

[Learn more, Memberships starting at \\$2.50/m!](#)

**Follow me
on Twitter!**

@ConvertingColor