

# Converting Colors

Hex(A48D74)

Have a look what the booklet for  
Hex(A48D74) contains.

<b>Hex(A48D74)</b> .....	3
<b><i>Conversions</i></b> .....	4
<b><i>Details</i></b> .....	6
<b><i>Harmonies</i></b> .....	11
<b><i>Previews</i></b> .....	23
<b><i>Color Blindness Simulation</i></b> .....	26
<b><i>CSS Examples</i></b> .....	29

**Color**

**Hex(A48D74)**

# Conversions

## Conversions Part 1

<b>Format</b>	<b>Color</b>
Hex	A48D74
RGB	164, 141, 116
RGB Percent	64%, 55%, 45%
CMY	0.3569, 0.4471, 0.5451
CMYK	0.00, 0.14, 0.29, 0.36
HSL	31°, 21%, 55%
HSV	31°, 29%, 64%
XYZ	27.9871, 28.2032, 20.4917
YIQ	145.0270, 21.7330, -2.8990

# Conversions

## Conversions Part 2

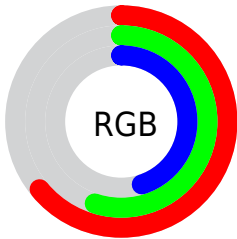
<b>Format</b>	<b>Color</b>
<b>R<sub>YB</sub></b>	160, 164, 116
Decimal	10784116
CIE <sub>Lab</sub>	60.07, 4.75, 16.54
CIE <sub>LCh</sub>	60, 17.212, 73.996
Yxy	28.2032, 0.3650, 0.3678
Android (android.graphics.Color)	4288974196 (0xFFA48D74)
YUV	145.0270, -14.3103, 16.6393
Hunter-Lab	53.1067, 1.1323, 14.2971

# Details

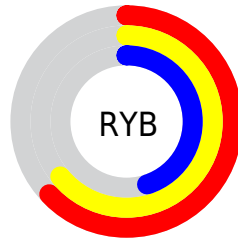
The Hex color **A48D74** is a dark color, and the websafe version is hex **999966**. A complement of this color would be **748BA4**, and the grayscale version is **919191**.

A 20% lighter version of the original color is **DCC3A8**, and **6F5B44** is the 20% darker color. If you saturate the color by 10%, you get **A48564**, and if you desaturate by 10%, it is **A49584**.

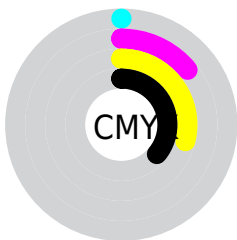
# Distribution



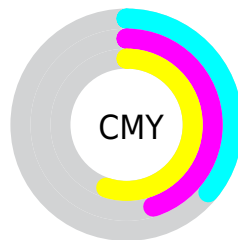
- Red (64%)
- Green (55%)
- Blue (45%)



- Red (63%)
- Yellow (64%)
- Blue (45%)



- Cyan (0%)
- Magenta (14%)
- Yellow (29%)
- Black (36%)



- Cyan (36%)
- Magenta (45%)
- Yellow (55%)

# Brightness & Saturation Gradients

These gradients show how the Hex color A48D74 changes by changing the brightness by 10 percent. The first figure shows a shift by +10% for each color and the second figure -10%.

Similar to the brightness gradients but the following saturation gradients show a change of the Hex color A48D74 by changing the saturation by 10% instead.





A48D74



A48D74

FFFFFF



89735B



DCC3A8



6F5B44



F8DEC3



56442D



FFFBDF



3E2D18



FFFFFFC



291900



0D0000



000000



A48D74



A48D74



A48564



A49584

 A47D53

 A49D95

 A47543

 A4A5A5

 A46E32

 A4ACB6

 A46622

 A4B4C6

 A45E12

 A4BCD6

 A45601

 A4C4E7

 A45500

 A4CCF7

 A4D4FF

# Harmonies

## Analogous

The Analogous color harmony consists of three colors that are next to each other on the color wheel.



AE897C



A48D74



959273

# Triad

The Triadic color harmony groups three colors that are evenly spaced from another and form a triangle on the color wheel.



A48D74



699A97



9C8BA7

# Complementary

The Complementary color scheme is a pair of colors which are on the opposite of each other on the color wheel.



A48D74



748BA4

# Split Complementary

Split-complementary colors differ from the complementary color scheme. The scheme consists of three colors, the original color and two neighbors of the complement color.



8990AE



A48D74



6998A5

# Square

The Square scheme is like the rectangle color scheme, but the four colors are evenly spaced on the color wheel.



A48D74



749988



7595AD



AA879A

# Rectangle

The Rectangle color scheme consists of four colors that form a rectangle on the color wheel.



A48D74



8A9577



7595AD



968CAA



# Sweetspot

The Sweet Spot groups the original color and five complimentary colors.



A48D74



D6CDC3



A4748B



6B655F



EBEBEB



6B6B6B



# Same Dimension

The Same Dimension uses a secret algorithm to generate beautiful new colors.



A48D74



D6B28B



A3A474



524E49



914C00



120900



# Inverse Universe

The Inverse Universe completely reimagines the original color for something new.



748BA4



8BAFD6



7574A4



494D52



004691

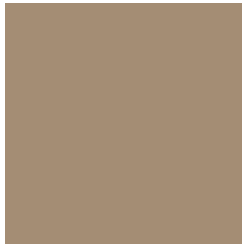


000912



# Previews

## White Background



This preview shows how the Hex color A48D74 looks on a white background.

## Color Contrast Check

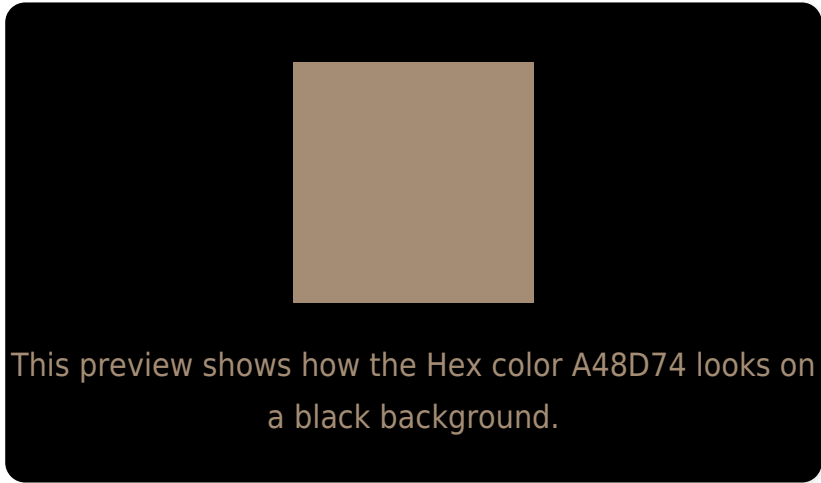
Large Text (above 18pt) WCAG AA ✓ Pass

Any Text WCAG AA × Fail

Large Text (above 18pt) WCAG AAA × Fail

Any Text WCAG AAA × Fail

# Black Background



## Color Contrast Check

Large Text (above 18pt) WCAG AA ✓ Pass

Any Text WCAG AA ✓ Pass

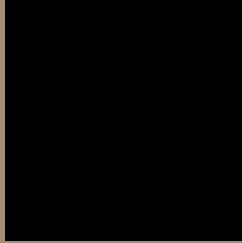
Large Text (above 18pt) WCAG AAA ✓ Pass

Any Text WCAG AAA × Fail

If you want to check with other color combinations, try the [Color Contrast Checker](#).



## Hex A48D74 Background



This preview shows how black text looks on a background with the Hex color A48D74.



This preview shows how white text looks on a background with the Hex color A48D74.

# Color Blindness Simulation

Color vision deficiency is a very complex topic, and I could not describe the different causes any better than Wikipedia does, so if you want to learn more, you should check out their [article about color blindness](#).

## Dichromacy



**Original Color**

A48D74

**Protanopia**

9A9176

**Deuteranopia**

A98B74



**Tritanopia**  
A88993

# Trichromacy



**Original Color**

A48D74

**Protanomaly**

9E9075

**Deuteranomaly**

A78C74

**Tritanomaly**

A78A88

# Monochromacy



**Original Color**

A48D74

**Achromatopsia**

919191

**Achromatomaly**

989086

# CSS Examples

## Text

The CSS property to change the color of the text to Hex A48D74 is called "color". The color property can be set on classes, ids or directly on the HTML element.

This example shows how text in the color #A48D74 looks like.

```
.text, #text, p{  
    color:#A48D74  
}
```

If you want to add a text shadow in that color use the text-shadow property, you can generate a text shadow directly with our [CSS Text Shadow Generator](#).

Here you see how black text with a 4 pixel #A48D74 colored shadow looks like.

```
.shadow{ text-shadow: 4px 4px 2px #A48D74
}
```

## Border

The CSS property to change the border of an element to Hex A48D74 is called "border". The border property can be set on classes, ids or directly on the HTML element.

This example shows the color as border, it can be applied via the CSS property "border" or "border-color".

```
.border, #border, table{ border:4px solid
#A48D74 }
```

If only the border color should be changed use the property `border-color`.

```
.border{ border-color:#A48D74 }
```

If you want to add a box shadow in that color use:

Here you see how a box with a 4 pixel #A48D74 colored shadow looks like.

```
.boxshadow{ -moz-box-shadow:4px 4px 4px  
4px #A48D74; -webkit-box-shadow:4px 4px  
4px 4px #A48D74; box-shadow:4px 4px 4px  
4px #A48D74 }
```

# Background

The CSS property to change the background color of an element to Hex A48D74 is called "background". The background property can be set on classes, ids or directly on the HTML element.

```
.background, #background, body{  
background:#A48D74 }
```

If only the background color should be changed can be used:

```
.background{ background-color:#A48D74 }
```

This example shows the color as background, it is applied via the CSS property "background".

To optimize and compress your CSS code, you can use our [online CSS compressor and optimizer](#) based on csstidy. If you want to create a linear or radial gradient as background or border, check our [CSS Gradient Generator](#).



Hey! You found this booklet interesting? Support Converting Colors with the new Membership Option!

The pro membership hides all ads, plus gives you double the colors in the color bucket, and more awesome pro features!

**[Learn more, Memberships starting at \\$2.50/m!](#)**

**Follow me  
on Twitter!**

@ConvertingColor