

# Converting Colors

Hex(A495A1)

Have a look what the booklet for  
Hex(A495A1) contains.

<b>Hex(A495A1)</b> .....	3
<i><b>Conversions</b></i> .....	4
<i><b>Details</b></i> .....	6
<i><b>Harmonies</b></i> .....	11
<i><b>Previews</b></i> .....	23
<i><b>Color Blindness Simulation</b></i> .....	26
<i><b>CSS Examples</b></i> .....	29

# **Color**

**Hex(A495A1)**

# Conversions

## Conversions Part 1

Format	Color
Hex	A495A1
RGB	164, 149, 161
RGB Percent	64%, 58%, 63%
CMY	0.3569, 0.4157, 0.3686
CMYK	0.00, 0.09, 0.02, 0.36
HSL	312°, 8%, 61%
HSV	312°, 9%, 64%
XYZ	32.4903, 31.9606, 38.1748
YIQ	154.8530, 5.0880, 6.9120

# Conversions

## Conversions Part 2

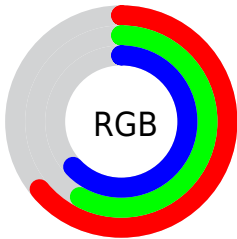
<b>Format</b>	<b>Color</b>
<b>RYB</b>	164, 149, 161
Decimal	10786209
CIELab	63.31, 7.75, -4.29
CIElCh	63, 8.854, 331.056
Yxy	31.9606, 0.3166, 0.3114
Android (android.graphics.Color)	4288976289 (0xFFA495A1)
YUV	154.8530, 3.0305, 8.0219
Hunter-Lab	56.5337, 3.6511, -0.4624

# Details

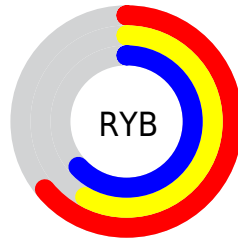
The Hex color **A495A1** is a light color, and the websafe version is hex **999999**. A complement of this color would be **95A498**, and the grayscale version is **9B9B9B**.

A 20% lighter version of the original color is **DBCBD8**, and **70626E** is the 20% darker color. If you saturate the color by 10%, you get **A4859E**, and if you desaturate by 10%, it is **A4A5A4**.

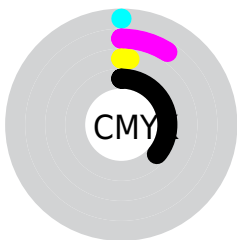
# Distribution



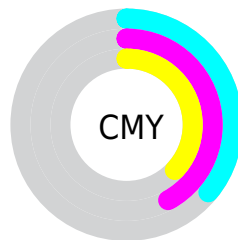
- Red (64%)
- Green (58%)
- Blue (63%)



- Red (64%)
- Yellow (58%)
- Blue (63%)



- Cyan (0%)
- Magenta (9%)
- Yellow (2%)
- Black (36%)



- Cyan (36%)
- Magenta (42%)
- Yellow (37%)

# Brightness & Saturation Gradients

These gradients show how the Hex color A495A1 changes by changing the brightness by 10 percent. The first figure shows a shift by +10% for each color and the second figure -10%.

Similar to the brightness gradients but the following saturation gradients show a change of the Hex color A495A1 by changing the saturation by 10% instead.





A495A1



A495A1

FFFFFF



8A7B87



DBCBD8



70626E



F7E7F4



584A55



40343E



2A1F28



170614



000000



A495A1



A495A1



A4859E



A4A5A4

 A4749A

 A4B6A8

 A46497

 A4C6AB

 A45394

 A4D7AE

 A44391

 A4E7B1

 A4338D

 A4F7B5

 A4228A

 A4FFB8

 A41287

 A4FFBB

 A40183

 A4FFBF

# Harmonies

## Analogous

The Analogous color harmony consists of three colors that are next to each other on the color wheel.



9B97A7



A495A1



A99499

# Triad

The Triadic color harmony groups three colors that are evenly spaced from another and form a triangle on the color wheel.



A495A1



A0998A



869EA1

# Complementary

The Complementary color scheme is a pair of colors which are on the opposite of each other on the color wheel.



A495A1



95A498

# Split Complementary

Split-complementary colors differ from the complementary color scheme. The scheme consists of three colors, the original color and two neighbors of the complement color.



889E99



A495A1



979B8C

# Square

The Square scheme is like the rectangle color scheme, but the four colors are evenly spaced on the color wheel.



A495A1



A7968C



8E9D91



899CA7

# Rectangle

The Rectangle color scheme consists of four colors that form a rectangle on the color wheel.



A495A1



AA9494



8E9D91



869E9F



# Sweetspot

The Sweet Spot groups the original color and five complimentary colors.



A495A1



D6D0D5



9895A4



6B676A



EBEBEB



6B6B6B



# Same Dimension

The Same Dimension uses a secret algorithm to generate beautiful new colors.



A495A1



D6BFD1



A4959A



524950



910074



12000E



# Inverse Universe

The Inverse Universe completely reimagines the original color for something new.



A495A1



D6BFD1



95A49F



524950



910074

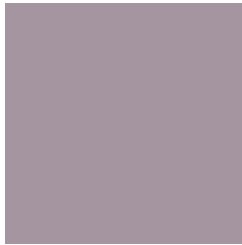


12000E



# Previews

## White Background



This preview shows how the Hex color A495A1 looks on a white background.

## Color Contrast Check

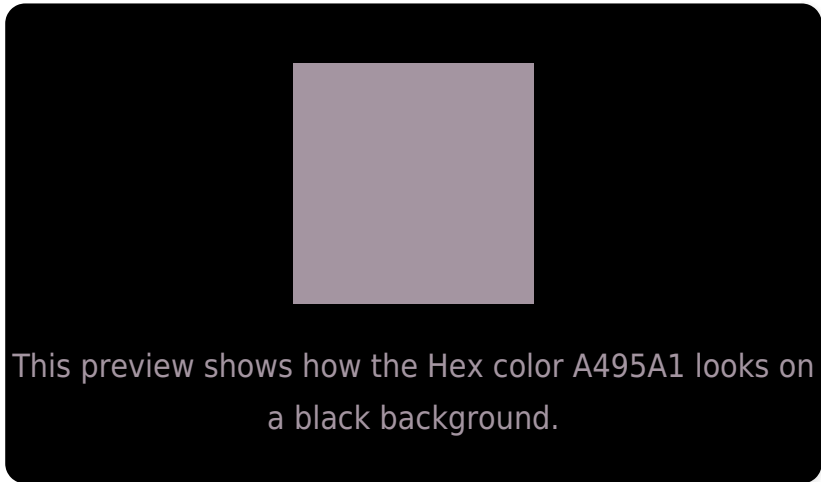
Large Text (above 18pt) WCAG AA × Fail

Any Text WCAG AA × Fail

Large Text (above 18pt) WCAG AAA × Fail

Any Text WCAG AAA × Fail

# Black Background



## Color Contrast Check

Large Text (above 18pt) WCAG AA ✓ Pass

Any Text WCAG AA ✓ Pass

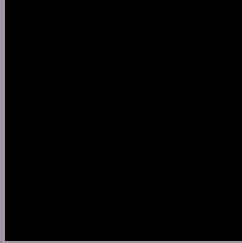
Large Text (above 18pt) WCAG AAA ✓ Pass

Any Text WCAG AAA ✓ Pass

If you want to check with other color combinations, try the [Color Contrast Checker](#).



## Hex A495A1 Background



This preview shows how black text looks on a background with the Hex color A495A1.



This preview shows how white text looks on a background with the Hex color A495A1.

# Color Blindness Simulation

Color vision deficiency is a very complex topic, and I could not describe the different causes any better than Wikipedia does, so if you want to learn more, you should check out their [article about color blindness](#).

## Dichromacy



**Original Color**  
A495A1

**Protanopia**  
9998A3

**Deuteranopia**  
A595A1



**Tritanopia**  
A495A1

# Trichromacy



**Original Color**  
A495A1

**Protanomaly**  
9D97A2

**Deuteranomaly**  
A595A1

**Tritanomaly**  
A495A1

# Monochromacy



**Original Color**  
A495A1

**Achromatopsia**  
9B9B9B

**Achromatomaly**  
9E999D

# CSS Examples

## Text

The CSS property to change the color of the text to Hex A495A1 is called "color". The color property can be set on classes, ids or directly on the HTML element.

This example shows how text in the color #A495A1 looks like.

```
.text, #text, p{  
    color:#A495A1  
}
```

If you want to add a text shadow in that color use the text-shadow property, you can generate a text shadow directly with our [CSS Text Shadow Generator](#).

Here you see how black text with a 4 pixel #A495A1 colored shadow looks like.

```
.shadow{ text-shadow: 4px 4px 2px #A495A1  
}
```

## Border

The CSS property to change the border of an element to Hex A495A1 is called "border". The border property can be set on classes, ids or directly on the HTML element.

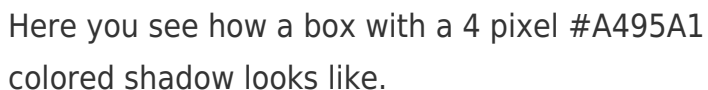
This example shows the color as border, it can be applied via the CSS property "border" or "border-color".

```
.border, #border, table{ border:4px solid  
#A495A1 }
```

If only the border color should be changed use the property `border-color`.

```
.border{ border-color:#A495A1 }
```

If you want to add a box shadow in that color use:



Here you see how a box with a 4 pixel #A495A1 colored shadow looks like.

```
.boxshadow{ -moz-box-shadow:4px 4px 4px  
4px #A495A1; -webkit-box-shadow:4px 4px  
4px 4px #A495A1; box-shadow:4px 4px 4px  
4px #A495A1 }
```

# Background

The CSS property to change the background color of an element to Hex A495A1 is called "background". The background property can be set on classes, ids or directly on the HTML element.

```
.background, #background, body{  
background:#A495A1 }
```

If only the background color should be changed can be used:

```
.background{ background-color:#A495A1 }
```

This example shows the color as background, it is applied via the CSS property "background".

To optimize and compress your CSS code, you can use our [online CSS compressor and optimizer](#) based on csstidy. If you want to create a linear or radial gradient as background or border, check our [CSS Gradient Generator](#).



Hey! You found this booklet interesting? Support Converting Colors with the new Membership Option!

The pro membership hides all ads, plus gives you double the colors in the color bucket, and more awesome pro features!

**[Learn more, Memberships starting at \\$2.50/m!](#)**

**Follow me  
on Twitter!**

@ConvertingColor