

# Converting Colors

Hex(A56562)

Have a look what the booklet for  
Hex(A56562) contains.

<b>Hex(A56562)</b> .....	3
<b><i>Conversions</i></b> .....	4
<b><i>Details</i></b> .....	6
<b><i>Harmonies</i></b> .....	11
<b><i>Previews</i></b> .....	23
<b><i>Color Blindness Simulation</i></b> .....	26
<b><i>CSS Examples</i></b> .....	29

**Color**

**Hex(A56562)**

# Conversions

## Conversions Part 1

<b>Format</b>	<b>Color</b>
Hex	A56562
RGB	165, 101, 98
RGB Percent	65%, 40%, 38%
CMY	0.3529, 0.6039, 0.6157
CMYK	0.00, 0.39, 0.41, 0.35
HSL	3°, 27%, 52%
HSV	3°, 41%, 65%
XYZ	22.3753, 18.1885, 13.8867
YIQ	119.7940, 39.1070, 12.6350

# Conversions

## Conversions Part 2

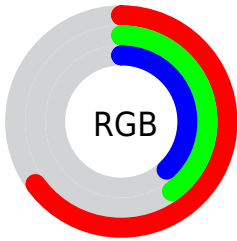
<b>Format</b>	<b>Color</b>
<b>R<sub>YB</sub></b>	165, 101, 98
Decimal	10839394
CIE <sub>Lab</sub>	49.72, 25.44, 12.64
CIE <sub>LCh</sub>	50, 28.408, 26.431
Yxy	18.1885, 0.4109, 0.3340
Android (android.graphics.Color)	4289029474 (0xFFA56562)
YUV	119.7940, -10.7444, 39.6457
Hunter-Lab	42.6480, 19.0162, 10.5481

# Details

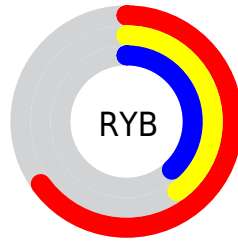
The Hex color **A56562** is a dark color, and the websafe version is hex **996666**. A complement of this color would be **62A2A5**, and the grayscale version is **787878**.

A 20% lighter version of the original color is **DE9995**, and **6F3534** is the 20% darker color. If you saturate the color by 10%, you get **A55551**, and if you desaturate by 10%, it is **A57572**.

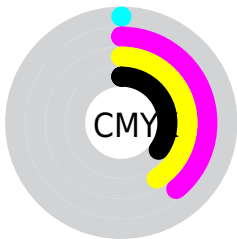
# Distribution



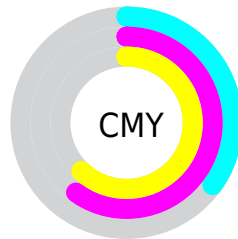
- Red (65%)
- Green (40%)
- Blue (38%)



- Red (65%)
- Yellow (40%)
- Blue (38%)



- Cyan (0%)
- Magenta (39%)
- Yellow (41%)
- Black (35%)



- Cyan (35%)
- Magenta (60%)
- Yellow (62%)

# Brightness & Saturation Gradients

These gradients show how the Hex color A56562 changes by changing the brightness by 10 percent. The first figure shows a shift by +10% for each color and the second figure -10%.

Similar to the brightness gradients but the following saturation gradients show a change of the Hex color A56562 by changing the saturation by 10% instead.



 A56562

 A56562

FFFFFF

 894C4A

 DE9995

 6F3534

 FBB4AF

 541E1F

 FFCFCB

 3B0606

 FFECE7

 260001

 000000

 A56562

 A56562

 A55551

 A57572

 A54541

 A58583

 A53631

 A59493

 A52620

 A5A4A4

 A5160F

 A5B4B4

 A50700

 A5C4C5

 A5D3D5

 A5E3E6

 A5F3F6

# Harmonies

## Analogous

The Analogous color harmony consists of three colors that are next to each other on the color wheel.



A2647A



A56562



9C6B4F

# Triad

The Triadic color harmony groups three colors that are evenly spaced from another and form a triangle on the color wheel.



A56562



54805B



4F79A6

# Complementary

The Complementary color scheme is a pair of colors which are on the opposite of each other on the color wheel.



A56562



62A2A5

# Split Complementary

Split-complementary colors differ from the complementary color scheme. The scheme consists of three colors, the original color and two neighbors of the complement color.



24809E



A56562



348372

# Square

The Square scheme is like the rectangle color scheme, but the four colors are evenly spaced on the color wheel.



A56562



707B4A



14838B



7571A1

# Rectangle

The Rectangle color scheme consists of four colors that form a rectangle on the color wheel.



A56562



907147



14838B



407CA5



# Sweetspot

The Sweet Spot groups the original color and five complimentary colors.



A56562



D6BEBC



A562A3



6B5D5C



EBEBEB



6B6B6B



# Same Dimension

The Same Dimension uses a secret algorithm to generate beautiful new colors.



A56562



D6726D



A58662



524A49



910700



120100



# Inverse Universe

The Inverse Universe completely reimagines the original color for something new.



62A2A5



6DD2D6



6281A5



495152



008B91

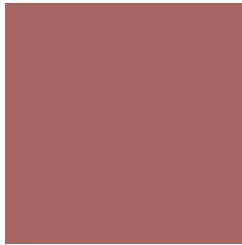


001112



# Previews

## White Background



This preview shows how the Hex color A56562 looks on a white background.

## Color Contrast Check

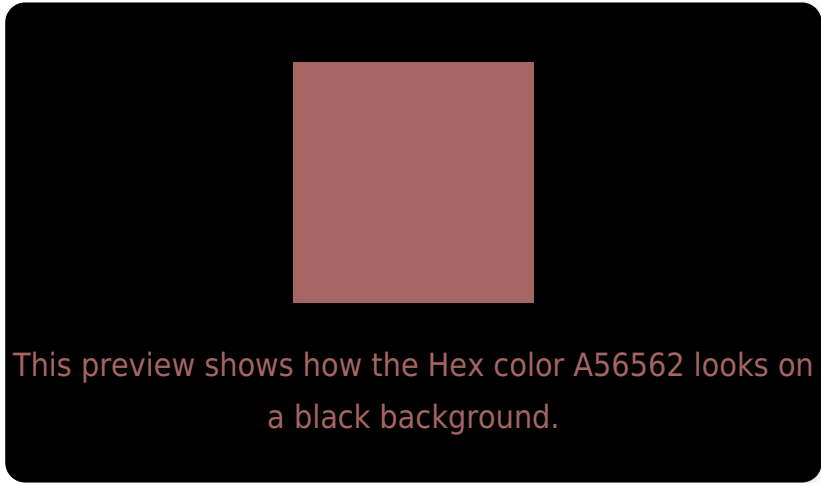
Large Text (above 18pt) WCAG AA ✓ Pass

Any Text WCAG AA ✓ Pass

Large Text (above 18pt) WCAG AAA ✓ Pass

Any Text WCAG AAA × Fail

# Black Background



## Color Contrast Check

Large Text (above 18pt) WCAG AA ✓ Pass

Any Text WCAG AA ✓ Pass

Large Text (above 18pt) WCAG AAA ✓ Pass

Any Text WCAG AAA × Fail

If you want to check with other color combinations, try the [Color Contrast Checker](#).



## Hex A56562 Background



This preview shows how black text looks on a background with the Hex color A56562.

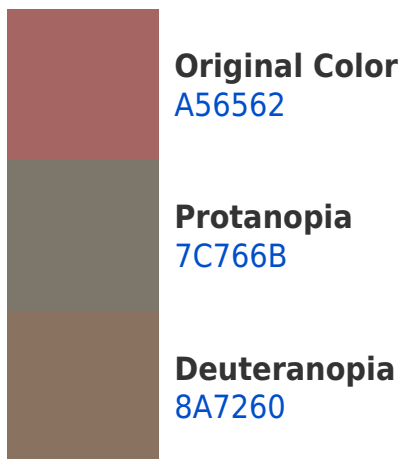


This preview shows how white text looks on a background with the Hex color A56562.

# Color Blindness Simulation

Color vision deficiency is a very complex topic, and I could not describe the different causes any better than Wikipedia does, so if you want to learn more, you should check out their [article about color blindness](#).

## Dichromacy





**Tritanopia**  
A6646B

# Trichromacy



**Original Color**  
A56562

**Protanomaly**  
8B7068

**Deuteranomaly**  
946D61

**Tritanomaly**  
A66468

# Monochromacy



**Original Color**  
A56562

**Achromatopsia**  
787878

**Achromatomaly**  
887170

# CSS Examples

## Text

The CSS property to change the color of the text to Hex A56562 is called "color". The color property can be set on classes, ids or directly on the HTML element.

This example shows how text in the color #A56562 looks like.

```
.text, #text, p{  
    color:#A56562  
}
```

If you want to add a text shadow in that color use the text-shadow property, you can generate a text shadow directly with our [CSS Text Shadow Generator](#).

Here you see how black text with a 4 pixel #A56562 colored shadow looks like.

```
.shadow{ text-shadow: 4px 4px 2px #A56562
}
```

## Border

The CSS property to change the border of an element to Hex A56562 is called "border". The border property can be set on classes, ids or directly on the HTML element.

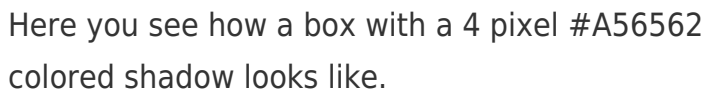
This example shows the color as border, it can be applied via the CSS property "border" or "border-color".

```
.border, #border, table{ border:4px solid
#A56562 }
```

If only the border color should be changed use the property `border-color`.

```
.border{ border-color:#A56562 }
```

If you want to add a box shadow in that color use:



Here you see how a box with a 4 pixel #A56562 colored shadow looks like.

```
.boxshadow{ -moz-box-shadow:4px 4px 4px  
4px #A56562; -webkit-box-shadow:4px 4px  
4px 4px #A56562; box-shadow:4px 4px 4px  
4px #A56562 }
```

# Background

The CSS property to change the background color of an element to Hex A56562 is called "background". The background property can be set on classes, ids or directly on the HTML element.

```
.background, #background, body{  
background:#A56562 }
```

If only the background color should be changed can be used:

```
.background{ background-color:#A56562 }
```

This example shows the color as background, it is applied via the CSS property "background".

To optimize and compress your CSS code, you can use our [online CSS compressor and optimizer](#) based on csstidy. If you want to create a linear or radial gradient as background or border, check our [CSS Gradient Generator](#).



Hey! You found this booklet interesting? Support Converting Colors with the new Membership Option!

The pro membership hides all ads, plus gives you double the colors in the color bucket, and more awesome pro features!

**[Learn more, Memberships starting at \\$2.50/m!](#)**

**Follow me  
on Twitter!**

@ConvertingColor