

Converting Colors

Hex(A57850)

Have a look what the booklet for
Hex(A57850) contains.

Hex(A57850)	3
<i>Conversions</i>	4
<i>Details</i>	6
<i>Harmonies</i>	11
<i>Previews</i>	23
<i>Color Blindness Simulation</i>	26
<i>CSS Examples</i>	29

Color

Hex(A57850)

Conversions

Conversions Part 1

Format	Color
Hex	A57850
RGB	165, 120, 80
RGB Percent	65%, 47%, 31%
CMY	0.3529, 0.5294, 0.6863
CMYK	0.00, 0.27, 0.52, 0.35
HSL	28°, 35%, 48%
HSV	28°, 52%, 65%
XYZ	23.6815, 22.0115, 10.5899
YIQ	128.8950, 39.6600, -2.9000

Conversions

Conversions Part 2

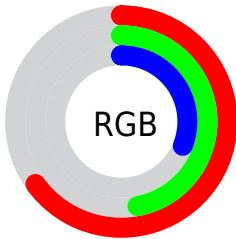
Format	Color
RYB	165, 156, 80
Decimal	10844240
CIELab	54.04, 12.73, 28.78
CIELCh	54, 31.472, 66.136
Yxy	22.0115, 0.4208, 0.3911
Android (android.graphics.Color)	4289034320 (0xFFA57850)
YUV	128.8950, -24.1052, 31.6641
Hunter-Lab	46.9164, 7.9959, 19.4586

Details

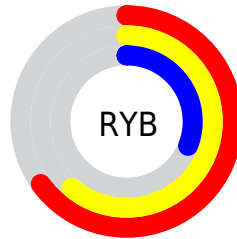
The Hex color **A57850** is a dark color, and the websafe version is hex **996633**. A complement of this color would be **507DA5**, and the grayscale version is **818181**.

A 20% lighter version of the original color is **DEAC82**, and **6E4722** is the 20% darker color. If you saturate the color by 10%, you get **A56F40**, and if you desaturate by 10%, it is **A58160**.

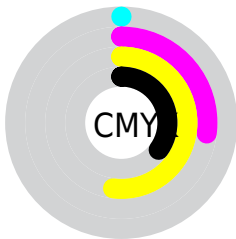
Distribution



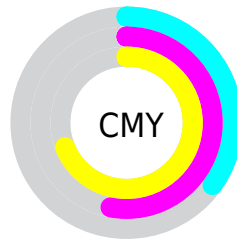
- Red (65%)
- Green (47%)
- Blue (31%)



- Red (65%)
- Yellow (61%)
- Blue (31%)



- Cyan (0%)
- Magenta (27%)
- Yellow (52%)
- Black (35%)



- Cyan (35%)
- Magenta (53%)
- Yellow (69%)

Brightness & Saturation Gradients

These gradients show how the Hex color A57850 changes by changing the brightness by 10 percent. The first figure shows a shift by +10% for each color and the second figure -10%.

Similar to the brightness gradients but the following saturation gradients show a change of the Hex color A57850 by changing the saturation by 10% instead.

 A57850

 A57850

FFFFFF

 895F39

 DEAC82

 6E4722

 FBC89C

 54310C

 FFE4B7

 3B1C00

 FFFFD3

 230400

 FFFFEE

 000000

 A57850

 A57850

 A56F40

 A58160

 A5672F

 A58971

 A55E1E

 A59282

 A5550E

 A59B92

 A54E00

 A5A4A3

 A5ACB3

 A5B5C3

 A5BED4

 A5C7E4

Harmonies

Analogous

The Analogous color harmony consists of three colors that are next to each other on the color wheel.



B37063



A57850



8E814A

Triad

The Triadic color harmony groups three colors that are evenly spaced from another and form a triangle on the color wheel.



A57850



279086



8C78AD

Complementary

The Complementary color scheme is a pair of colors which are on the opposite of each other on the color wheel.



A57850



507DA5

Split Complementary

Split-complementary colors differ from the complementary color scheme. The scheme consists of three colors, the original color and two neighbors of the complement color.



6382B7



A57850



008EA0

Square

The Square scheme is like the rectangle color scheme, but the four colors are evenly spaced on the color wheel.



A57850



4F8E6A



318AB2



A86F98

Rectangle

The Rectangle color scheme consists of four colors that form a rectangle on the color wheel.



A57850



7B874F



318AB2



7F7BB2

Sweetspot

The Sweet Spot groups the original color and five complimentary colors.



A57850



D6C5B6



A5507D



6B6158



EBEBEB



6B6B6B

Same Dimension

The Same Dimension uses a secret algorithm to generate beautiful new colors.



A57850



D69051



A5A250



524D49



914400



120800

Inverse Universe

The Inverse Universe completely reimagines the original color for something new.



507DA5



5198D6



5053A5



494E52



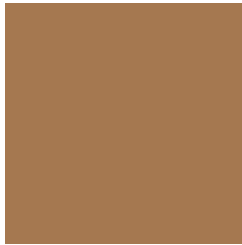
004D91



000912

Previews

White Background



This preview shows how the Hex color A57850 looks on a white background.

Color Contrast Check

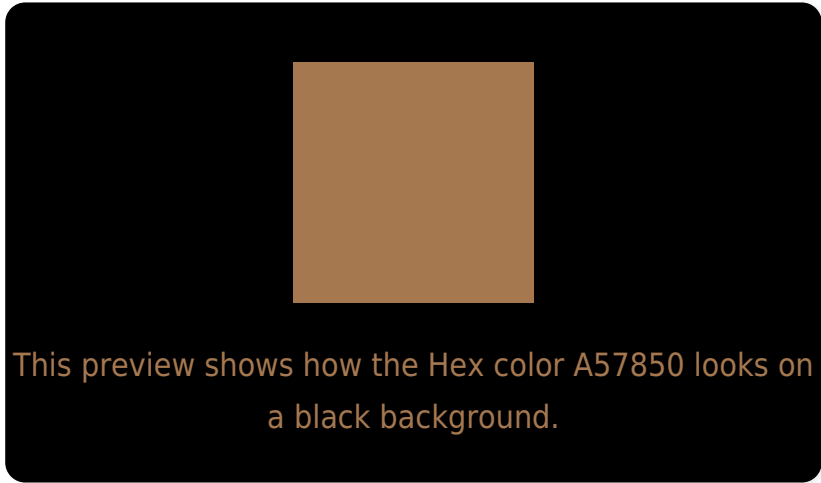
Large Text (above 18pt) WCAG AA ✓ Pass

Any Text WCAG AA ✗ Fail

Large Text (above 18pt) WCAG AAA ✗ Fail

Any Text WCAG AAA ✗ Fail

Black Background



Color Contrast Check

Large Text (above 18pt) WCAG AA ✓ Pass

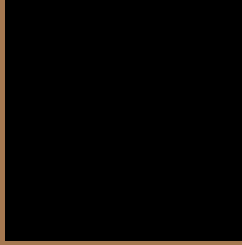
Any Text WCAG AA ✓ Pass

Large Text (above 18pt) WCAG AAA ✓ Pass

Any Text WCAG AAA × Fail

If you want to check with other color combinations, try the [Color Contrast Checker](#).

Hex A57850 Background



This preview shows how black text looks on a background with the Hex color A57850.



This preview shows how white text looks on a background with the Hex color A57850.

Color Blindness Simulation

Color vision deficiency is a very complex topic, and I could not describe the different causes any better than Wikipedia does, so if you want to learn more, you should check out their [article about color blindness](#).

Dichromacy



Original Color
A57850

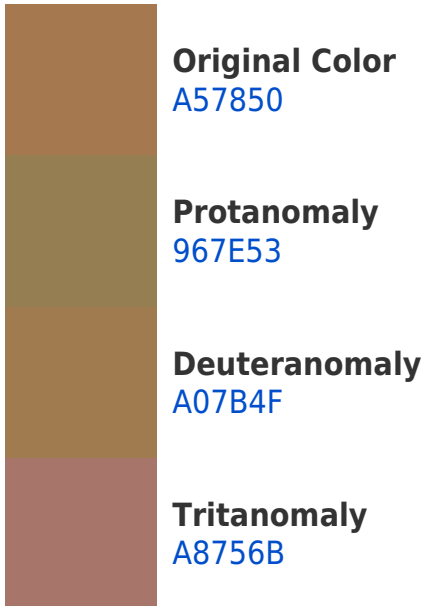
Protanopia
8D8154

Deuteranopia
9D7C4F



Tritanopia
A9737B

Trichromacy



Monochromacy



CSS Examples

Text

The CSS property to change the color of the text to Hex A57850 is called "color". The color property can be set on classes, ids or directly on the HTML element.

This example shows how text in the color #A57850 looks like.

```
.text, #text, p{  
    color:#A57850  
}
```

If you want to add a text shadow in that color use the text-shadow property, you can generate a text shadow directly with our [CSS Text Shadow Generator](#).

Here you see how black text with a 4 pixel #A57850 colored shadow looks like.

```
.shadow{ text-shadow: 4px 4px 2px #A57850  
}
```

Border

The CSS property to change the border of an element to Hex A57850 is called "border". The border property can be set on classes, ids or directly on the HTML element.

This example shows the color as border, it can be applied via the CSS property "border" or "border-color".

```
.border, #border, table{ border:4px solid  
#A57850 }
```

If only the border color should be changed use the property `border-color`.

```
.border{ border-color:#A57850 }
```

If you want to add a box shadow in that color use:

Here you see how a box with a 4 pixel #A57850 colored shadow looks like.

```
.boxshadow{ -moz-box-shadow:4px 4px 4px  
4px #A57850; -webkit-box-shadow:4px 4px  
4px 4px #A57850; box-shadow:4px 4px 4px  
4px #A57850 }
```

Background

The CSS property to change the background color of an element to Hex A57850 is called "background". The background property can be set on classes, ids or directly on the HTML element.

```
.background, #background, body{  
background:#A57850 }
```

If only the background color should be changed can be used:

```
.background{ background-color:#A57850 }
```

This example shows the color as background, it is applied via the CSS property "background".

To optimize and compress your CSS code, you can use our [online CSS compressor and optimizer](#) based on csstidy. If you want to create a linear or radial gradient as background or border, check our [CSS Gradient Generator](#).

Hey! You found this booklet interesting? Support Converting Colors with the new Membership Option!

The pro membership hides all ads, plus gives you double the colors in the color bucket, and more awesome pro features!

[Learn more, Memberships starting at \\$2.50/m!](#)

**Follow me
on Twitter!**

@ConvertingColor