

Converting Colors

Hex(A57B54)

Have a look what the booklet for
Hex(A57B54) contains.

| | |
|--|----|
| Hex(A57B54) | 3 |
| <i>Conversions</i> | 4 |
| <i>Details</i> | 6 |
| <i>Harmonies</i> | 11 |
| <i>Previews</i> | 23 |
| <i>Color Blindness Simulation</i> | 26 |
| <i>CSS Examples</i> | 29 |

Color

Hex(A57B54)

Conversions

Conversions Part 1

| Format | Color |
|---------------|----------------------------|
| Hex | A57B54 |
| RGB | 165, 123, 84 |
| RGB Percent | 65%, 48%, 33% |
| CMY | 0.3529, 0.5176, 0.6706 |
| CMYK | 0.00, 0.25, 0.49, 0.35 |
| HSL | 29°, 33%, 49% |
| HSV | 29°, 49%, 65% |
| XYZ | 24.2002, 22.8053, 11.5139 |
| YIQ | 131.1120, 37.5510, -3.2250 |

Conversions

Conversions Part 2

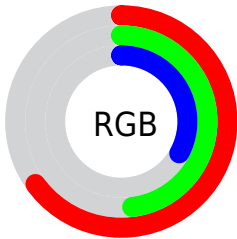
| Format | Color |
|-------------------------------------|--|
| RYB | 165, 159, 84 |
| Decimal | 10845012 |
| CIELab | 54.87, 11.43, 27.62 |
| CIELCh | 55, 29.886, 67.522 |
| Yxy | 22.8053, 0.4135, 0.3897 |
| Android (android.graphics.Color) | 4289035092 (0xFFA57B54) |
| YUV | 131.1120, -23.2262, 29.7198 |
| Hunter-Lab | 47.7549, 6.8853, 19.1334 |

Details

The Hex color **A57B54** is a dark color, and the websafe version is hex **996633**. A complement of this color would be **547EA5**, and the grayscale version is **838383**.

A 20% lighter version of the original color is **DEAF86**, and **6F4A26** is the 20% darker color. If you saturate the color by 10%, you get **A57243**, and if you desaturate by 10%, it is **A58465**.

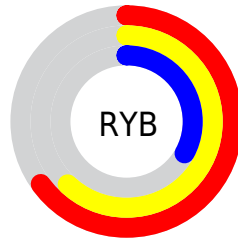
Distribution



Red (65%)

Green (48%)

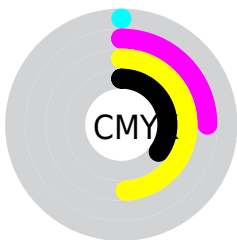
Blue (33%)



Red (65%)

Yellow (62%)

Blue (33%)

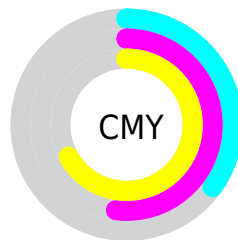


Cyan (0%)

Magenta (25%)

Yellow (49%)

Black (35%)



Cyan (35%)

Magenta (52%)

Yellow (67%)

Brightness & Saturation Gradients

These gradients show how the Hex color A57B54 changes by changing the brightness by 10 percent. The first figure shows a shift by +10% for each color and the second figure -10%.

Similar to the brightness gradients but the following saturation gradients show a change of the Hex color A57B54 by changing the saturation by 10% instead.

 A57B54

 A57B54

FFFFFF

 8A623C

 DEAF86

 6F4A26

 FBCBA1

 553410

 FFE7BC

 3C1E00

 FFFFD8

 240800

 FFFFF4

 000000

 A57B54

 A57B54

 A57243

 A58465

 A56A33

 A58C75

 A56123

 A59585

 A55912

 A59D96

 A55001

 A5A6A6

 A54F00

 A5AEB7

 A5B7C7

 A5BFD8

 A5C8E9

Harmonies

Analogous

The Analogous color harmony consists of three colors that are next to each other on the color wheel.



B37365



A57B54



8E844F

Triad

The Triadic color harmony groups three colors that are evenly spaced from another and form a triangle on the color wheel.



A57B54



319189



8F7AAC

Complementary

The Complementary color scheme is a pair of colors which are on the opposite of each other on the color wheel.



A57B54



547EA5

Split Complementary

Split-complementary colors differ from the complementary color scheme. The scheme consists of three colors, the original color and two neighbors of the complement color.



6984B6



A57B54



1E90A2

Square

The Square scheme is like the rectangle color scheme, but the four colors are evenly spaced on the color wheel.



A57B54



53906F



3E8BB2



A97298

Rectangle

The Rectangle color scheme consists of four colors that form a rectangle on the color wheel.



A57B54



7C8955



3E8BB2



837DB1

Sweetspot

The Sweet Spot groups the original color and five complimentary colors.



A57B54



D6C6B6



A5547F



6B6158



EBEBEB



6B6B6B

Same Dimension

The Same Dimension uses a secret algorithm to generate beautiful new colors.



A57B54



D69558



A5A254



524D49



914600



120900

Inverse Universe

The Inverse Universe completely reimagines the original color for something new.



547EA5



5899D6



5457A5



494E52



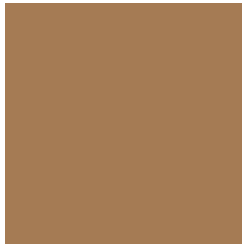
004B91



000912

Previews

White Background



This preview shows how the Hex color A57B54 looks on a white background.

Color Contrast Check

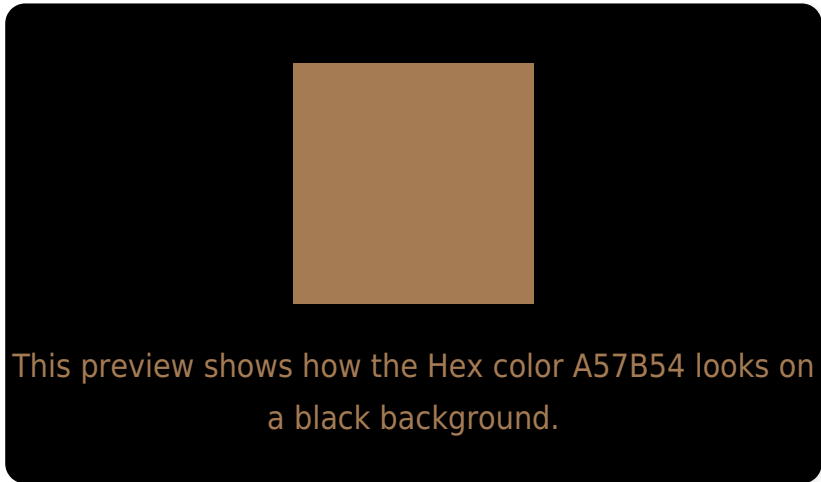
Large Text (above 18pt) WCAG AA ✓ Pass

Any Text WCAG AA × Fail

Large Text (above 18pt) WCAG AAA × Fail

Any Text WCAG AAA × Fail

Black Background



Color Contrast Check

Large Text (above 18pt) WCAG AA ✓ Pass

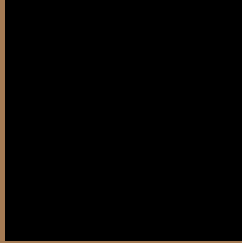
Any Text WCAG AA ✓ Pass

Large Text (above 18pt) WCAG AAA ✓ Pass

Any Text WCAG AAA × Fail

If you want to check with other color combinations, try the [Color Contrast Checker](#).

Hex A57B54 Background



This preview shows how black text looks on a background with the Hex color A57B54.



This preview shows how white text looks on a background with the Hex color A57B54.

Color Blindness Simulation

Color vision deficiency is a very complex topic, and I could not describe the different causes any better than Wikipedia does, so if you want to learn more, you should check out their [article about color blindness](#).


Dichromacy



Original Color
A57B54

Protanopia
8F8457

Deuteranopia
9F7E53



Tritanopia
A9767F

Trichromacy



Original Color
A57B54

Protanomaly
978156

Deuteranomaly
A17D53

Tritanomaly
A8786F

Monochromacy



Original Color
A57B54

Achromatopsia
838383

Achromatomaly
8F8072

CSS Examples

Text

The CSS property to change the color of the text to Hex A57B54 is called "color". The color property can be set on classes, ids or directly on the HTML element.

This example shows how text in the color #A57B54 looks like.

```
.text, #text, p{  
    color:#A57B54  
}
```

If you want to add a text shadow in that color use the text-shadow property, you can generate a text shadow directly with our [CSS Text Shadow Generator](#).

Here you see how black text with a 4 pixel #A57B54 colored shadow looks like.

```
.shadow{ text-shadow: 4px 4px 2px #A57B54
}
```

Border

The CSS property to change the border of an element to Hex A57B54 is called "border". The border property can be set on classes, ids or directly on the HTML element.

This example shows the color as border, it can be applied via the CSS property "border" or "border-color".

```
.border, #border, table{ border:4px solid
#A57B54 }
```

If only the border color should be changed use the property `border-color`.

```
.border{ border-color:#A57B54 }
```

If you want to add a box shadow in that color use:

Here you see how a box with a 4 pixel #A57B54 colored shadow looks like.

```
.boxshadow{ -moz-box-shadow:4px 4px 4px  
4px #A57B54; -webkit-box-shadow:4px 4px  
4px 4px #A57B54; box-shadow:4px 4px 4px  
4px #A57B54 }
```

Background

The CSS property to change the background color of an element to Hex A57B54 is called "background". The background property can be set on classes, ids or directly on the HTML element.

```
.background, #background, body{  
background:#A57B54 }
```

If only the background color should be changed can be used:

```
.background{ background-color:#A57B54 }
```

This example shows the color as background, it is applied via the CSS property "background".

To optimize and compress your CSS code, you can use our [online CSS compressor and optimizer](#) based on csstidy. If you want to create a linear or radial gradient as background or border, check our [CSS Gradient Generator](#).

Hey! You found this booklet interesting? Support Converting Colors with the new Membership Option!

The pro membership hides all ads, plus gives you double the colors in the color bucket, and more awesome pro features!

[Learn more, Memberships starting at \\$2.50/m!](#)

**Follow me
on Twitter!**

@ConvertingColor