

# Converting Colors

Hex(A5805A)

Have a look what the booklet for  
Hex(A5805A) contains.

<b>Hex(A5805A)</b> .....	3
<b><i>Conversions</i></b> .....	4
<b><i>Details</i></b> .....	6
<b><i>Harmonies</i></b> .....	11
<b><i>Previews</i></b> .....	23
<b><i>Color Blindness Simulation</i></b> .....	26
<b><i>CSS Examples</i></b> .....	29

**Color**

**Hex(A5805A)**

# Conversions

## Conversions Part 1

Format	Color
Hex	A5805A
RGB	165, 128, 90
RGB Percent	65%, 50%, 35%
CMY	0.3529, 0.4980, 0.6471
CMYK	0.00, 0.22, 0.45, 0.35
HSL	30°, 29%, 50%
HSV	30°, 45%, 65%
XYZ	25.0817, 24.1759, 13.0173
YIQ	134.7310, 34.2500, -3.9740

# Conversions

## Conversions Part 2

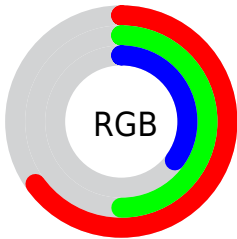
<b>Format</b>	<b>Color</b>
<b>RYB</b>	163, 165, 90
Decimal	10846298
CIELab	56.26, 9.23, 26.07
CIELCh	56, 27.651, 70.506
Yxy	24.1759, 0.4028, 0.3882
Android (android.graphics.Color)	4289036378 (0xFFA5805A)
YUV	134.7310, -22.0524, 26.5459
Hunter-Lab	49.1690, 5.0094, 18.7214

# Details

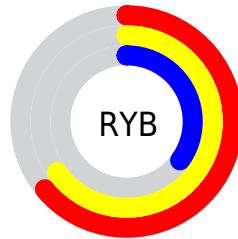
The Hex color **A5805A** is a dark color, and the websafe version is hex **CC9966**. A complement of this color would be **5A7FA5**, and the grayscale version is **878787**.

A 20% lighter version of the original color is **DEB58D**, and **6F4F2B** is the 20% darker color. If you saturate the color by 10%, you get **A5784A**, and if you desaturate by 10%, it is **A5886A**.

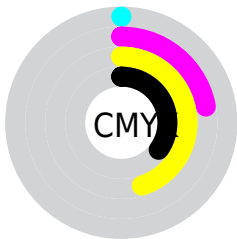
# Distribution



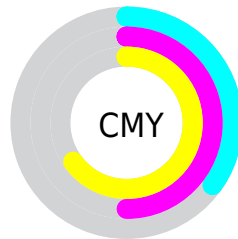
- Red (65%)
- Green (50%)
- Blue (35%)



- Red (64%)
- Yellow (65%)
- Blue (35%)



- Cyan (0%)
- Magenta (22%)
- Yellow (45%)
- Black (35%)



- Cyan (35%)
- Magenta (50%)
- Yellow (65%)

# Brightness & Saturation Gradients

These gradients show how the Hex color A5805A changes by changing the brightness by 10 percent. The first figure shows a shift by +10% for each color and the second figure -10%.

Similar to the brightness gradients but the following saturation gradients show a change of the Hex color A5805A by changing the saturation by 10% instead.





A5805A



A5805A

FFFFFF



8A6742



DEB58D



6F4F2B



FBD0A7



553816



FFEDC2



3D2200



FFFFDE



240E00



FFFFFFB



000000



A5805A



A5805A



A5784A



A5886A



A57039



A5907B

 A56829

 A5988B

 A55F18

 A5A19C

 A55707

 A5A9AC

 A55400

 A5B1BD

 A5B9CE

 A5C1DE

 A5C9EE

# Harmonies

## Analogous

The Analogous color harmony consists of three colors that are next to each other on the color wheel.



B37869



A5805A



8F8857

# Triad

The Triadic color harmony groups three colors that are evenly spaced from another and form a triangle on the color wheel.



A5805A



3D948F



957EAC

# Complementary

The Complementary color scheme is a pair of colors which are on the opposite of each other on the color wheel.



A5805A



5A7FA5

# Split Complementary

Split-complementary colors differ from the complementary color scheme. The scheme consists of three colors, the original color and two neighbors of the complement color.



7386B6



A5805A



3592A5

# Square

The Square scheme is like the rectangle color scheme, but the four colors are evenly spaced on the color wheel.



A5805A



589376



4E8EB4



AC7797

# Rectangle

The Rectangle color scheme consists of four colors that form a rectangle on the color wheel.



A5805A



7E8D5D



4E8EB4



8B81B0



# Sweetspot

The Sweet Spot groups the original color and five complimentary colors.



A5805A



D6C7B8



A55A7F



6B6259



EBEBEB



6B6B6B



# Same Dimension

The Same Dimension uses a secret algorithm to generate beautiful new colors.



A5805A



D69C60



A5A55A



524E49



914A00



120900



# Inverse Universe

The Inverse Universe completely reimagines the original color for something new.



5A7FA5



609BD6



5A5AA5



494D52



004891

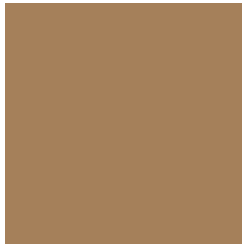


000912



# Previews

## White Background



This preview shows how the Hex color A5805A looks on a white background.

## Color Contrast Check

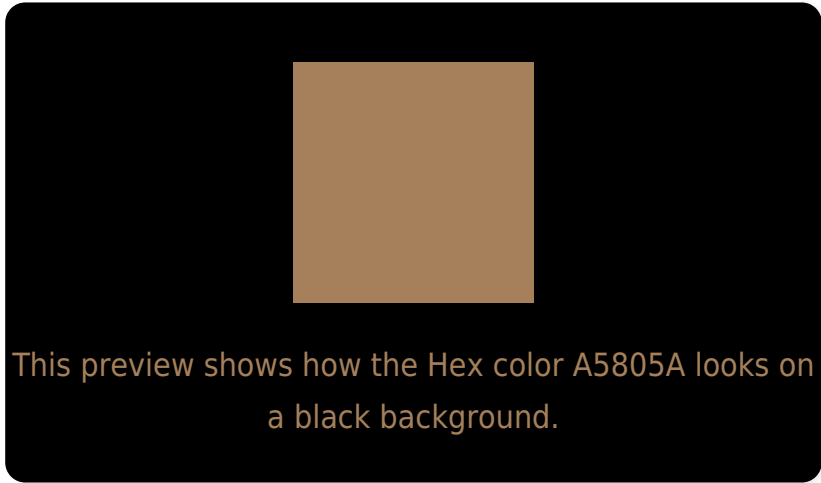
Large Text (above 18pt) WCAG AA ✓ Pass

Any Text WCAG AA × Fail

Large Text (above 18pt) WCAG AAA × Fail

Any Text WCAG AAA × Fail

# Black Background



## Color Contrast Check

Large Text (above 18pt) WCAG AA ✓ Pass

Any Text WCAG AA ✓ Pass

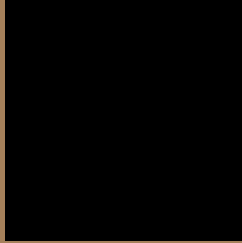
Large Text (above 18pt) WCAG AAA ✓ Pass

Any Text WCAG AAA × Fail

If you want to check with other color combinations, try the [Color Contrast Checker](#).



## Hex A5805A Background



This preview shows how black text looks on a background with the Hex color A5805A.



This preview shows how white text looks on a background with the Hex color A5805A.

# Color Blindness Simulation

Color vision deficiency is a very complex topic, and I could not describe the different causes any better than Wikipedia does, so if you want to learn more, you should check out their [article about color blindness](#).

## Dichromacy



**Original Color**  
A5805A

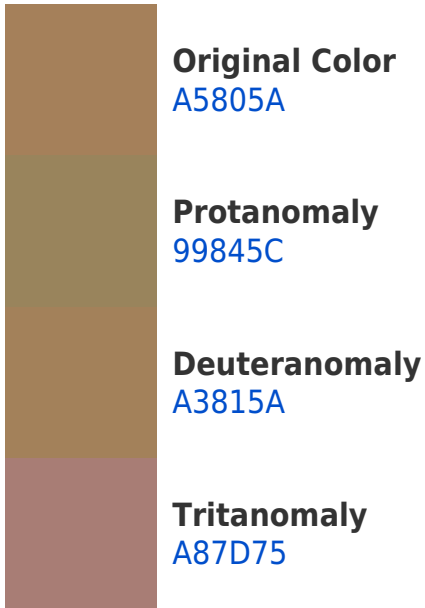
**Protanopia**  
92875D

**Deuteranopia**  
A2815A

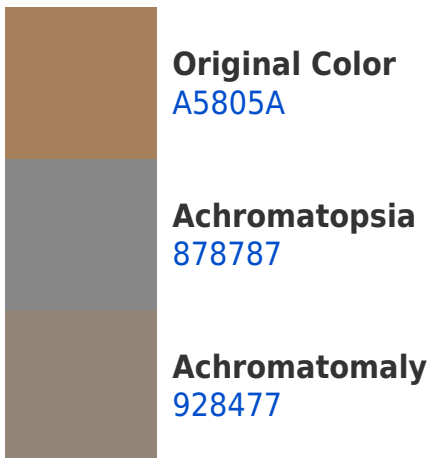


**Tritanopia**  
A97B84

# Trichromacy



# Monochromacy



# CSS Examples

## Text

The CSS property to change the color of the text to Hex A5805A is called "color". The color property can be set on classes, ids or directly on the HTML element.

This example shows how text in the color #A5805A looks like.

```
.text, #text, p{  
    color:#A5805A  
}
```

If you want to add a text shadow in that color use the text-shadow property, you can generate a text shadow directly with our [CSS Text Shadow Generator](#).

Here you see how black text with a 4 pixel #A5805A colored shadow looks like.

```
.shadow{ text-shadow: 4px 4px 2px #A5805A
}
```

## Border

The CSS property to change the border of an element to Hex A5805A is called "border". The border property can be set on classes, ids or directly on the HTML element.

This example shows the color as border, it can be applied via the CSS property "border" or "border-color".

```
.border, #border, table{ border:4px solid
#A5805A }
```

If only the border color should be changed use the property `border-color`.

```
.border{ border-color:#A5805A }
```

If you want to add a box shadow in that color use:

Here you see how a box with a 4 pixel #A5805A colored shadow looks like.

```
.boxshadow{ -moz-box-shadow:4px 4px 4px  
4px #A5805A; -webkit-box-shadow:4px 4px  
4px 4px #A5805A; box-shadow:4px 4px 4px  
4px #A5805A }
```

# Background

The CSS property to change the background color of an element to Hex A5805A is called "background". The background property can be set on classes, ids or directly on the HTML element.

```
.background, #background, body{  
background:#A5805A }
```

If only the background color should be changed can be used:

```
.background{ background-color:#A5805A }
```

This example shows the color as background, it is applied via the CSS property "background".

To optimize and compress your CSS code, you can use our [online CSS compressor and optimizer](#) based on csstidy. If you want to create a linear or radial gradient as background or border, check our [CSS Gradient Generator](#).



Hey! You found this booklet interesting? Support Converting Colors with the new Membership Option!

The pro membership hides all ads, plus gives you double the colors in the color bucket, and more awesome pro features!

**[Learn more, Memberships starting at \\$2.50/m!](#)**

**Follow me  
on Twitter!**

@ConvertingColor