

# Converting Colors

Hex(A65353)

Have a look what the booklet for  
Hex(A65353) contains.

<b>Hex(A65353)</b> .....	3
<b><i>Conversions</i></b> .....	4
<b><i>Details</i></b> .....	6
<b><i>Harmonies</i></b> .....	11
<b><i>Previews</i></b> .....	23
<b><i>Color Blindness Simulation</i></b> .....	26
<b><i>CSS Examples</i></b> .....	29

# Color

**Hex(A65353)**

# Conversions

## Conversions Part 1

<b>Format</b>	<b>Color</b>
Hex	A65353
RGB	166, 83, 83
RGB Percent	65%, 33%, 33%
CMY	0.3490, 0.6745, 0.6745
CMYK	0.00, 0.50, 0.50, 0.35
HSL	0°, 33%, 49%
HSV	0°, 50%, 65%
XYZ	20.3805, 14.9180, 9.9889
YIQ	107.8170, 49.4680, 17.5960

# Conversions

## Conversions Part 2

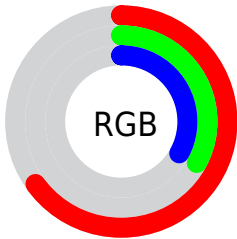
Format	Color
<a href="#">RYB</a>	<a href="#">166, 83, 83</a>
Decimal	<a href="#">10900307</a>
CIELab	<a href="#">45.52, 34.09, 15.87</a>
CIELCh	<a href="#">46, 37.602, 24.964</a>
Yxy	<a href="#">14.9180, 0.4500, 0.3294</a>
Android (android.graphics.Color)	<a href="#">4289090387</a> ( <a href="#">0xFFA65353</a> )
YUV	<a href="#">107.8170, -12.2348, 51.0265</a>
Hunter-Lab	<a href="#">38.6239, 26.5965, 11.7031</a>

# Details

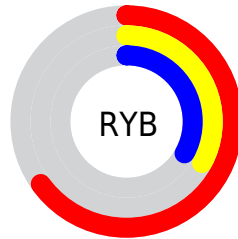
The Hex color **A65353** is a dark color, and the websafe version is hex **CC6666**. A complement of this color would be **53A6A6**, and the grayscale version is **6C6C6C**.

A 20% lighter version of the original color is **E08684**, and **6E2226** is the 20% darker color. If you saturate the color by 10%, you get **A64242**, and if you desaturate by 10%, it is **A66464**.

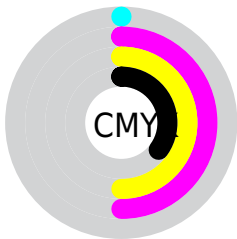
# Distribution



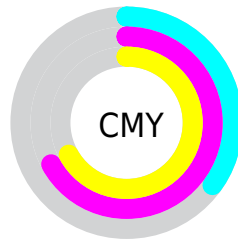
- Red (65%)
- Green (33%)
- Blue (33%)



- Red (65%)
- Yellow (33%)
- Blue (33%)



- Cyan (0%)
- Magenta (50%)
- Yellow (50%)
- Black (35%)



- Cyan (35%)
- Magenta (67%)
- Yellow (67%)

# Brightness & Saturation Gradients

These gradients show how the Hex color A65353 changes by changing the brightness by 10 percent. The first figure shows a shift by +10% for each color and the second figure -10%.

Similar to the brightness gradients but the following saturation gradients show a change of the Hex color A65353 by changing the saturation by 10% instead.



 A65353

 A65353

FFFFFF

 8A3A3C

 E08684

 6E2226

 FEA19F

 530612

 FFBDB9


 390000

 FFD9D5

 1C0001

 FFF6F1

 000000

 A65353

 A65353

 A64242

 A66464

 A63232

 A67474

 A62121

 A68585

 A61111

 A69595

 A60000

 A6A6A6

 A6B7B7

 A6C7C7

 A6D8D8

 A6E8E8

# Harmonies

## Analogous

The Analogous color harmony consists of three colors that are next to each other on the color wheel.



A35172



A65353



9A5D39

# Triad

The Triadic color harmony groups three colors that are evenly spaced from another and form a triangle on the color wheel.



A65353



3D7846



1D71AA

# Complementary

The Complementary color scheme is a pair of colors which are on the opposite of each other on the color wheel.



A65353



53A6A6

# Split Complementary

Split-complementary colors differ from the complementary color scheme. The scheme consists of three colors, the original color and two neighbors of the complement color.



00789F



A65353



007B65

# Square

The Square scheme is like the rectangle color scheme, but the four colors are evenly spaced on the color wheel.



A65353



647230



007B85



6566A5

# Rectangle

The Rectangle color scheme consists of four colors that form a rectangle on the color wheel.



A65353



8B642E



007B85



0074A8



# Sweetspot

The Sweet Spot groups the original color and five complimentary colors.



A65353



D9B8B8



A653A6



6E5A5A



EDEDED



6E6E6E



# Same Dimension

The Same Dimension uses a secret algorithm to generate beautiful new colors.



A65353



D95757



A67C53



544C4C



940000



140000



# Inverse Universe

The Inverse Universe completely reimagines the original color for something new.



53A6A6



57D9D9



537CA6



4C5454



009494

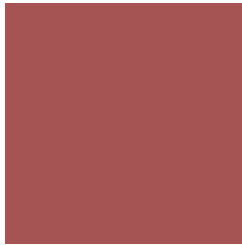


001414



# Previews

## White Background



This preview shows how the Hex color A65353 looks on a white background.

## Color Contrast Check

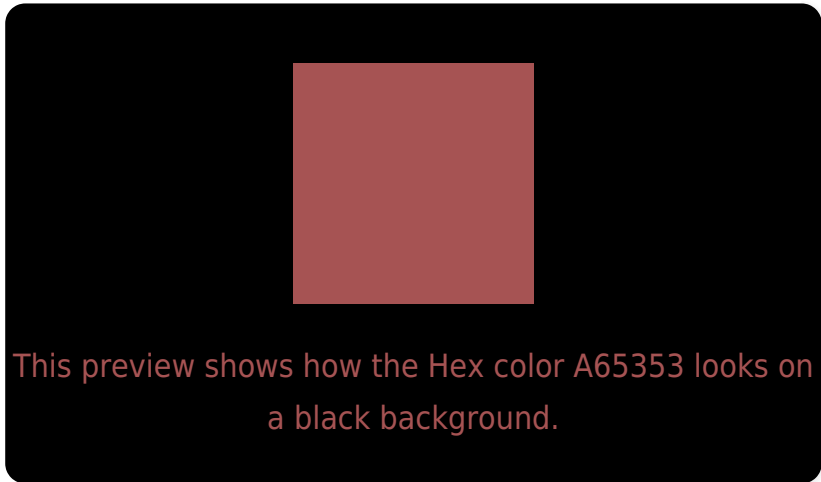
Large Text (above 18pt) WCAG AA ✓ Pass

Any Text WCAG AA ✓ Pass

Large Text (above 18pt) WCAG AAA ✓ Pass

Any Text WCAG AAA × Fail

# Black Background



## Color Contrast Check

Large Text (above 18pt) WCAG AA ✓ Pass

Any Text WCAG AA × Fail

Large Text (above 18pt) WCAG AAA × Fail

Any Text WCAG AAA × Fail

If you want to check with other color combinations, try the [Color Contrast Checker](#).



## Hex A65353 Background



This preview shows how black text looks on a background with the Hex color A65353.

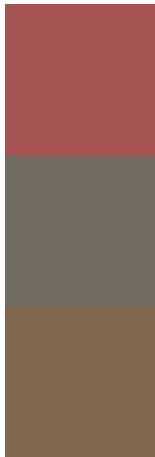


This preview shows how white text looks on a background with the Hex color A65353.

# Color Blindness Simulation

Color vision deficiency is a very complex topic, and I could not describe the different causes any better than Wikipedia does, so if you want to learn more, you should check out their [article about color blindness](#).


## Dichromacy



**Original Color**  
A65353

**Protanopia**  
716C5F

**Deuteranopia**  
80684F



**Tritanopia**  
A65258

# Trichromacy



**Original Color**  
A65353

**Protanomaly**  
84635B

**Deuteranomaly**  
8E6050

**Tritanomaly**  
A65256

# Monochromacy



**Original Color**  
A65353

**Achromatopsia**  
6C6C6C

**Achromatomaly**  
816363

# CSS Examples

## Text

The CSS property to change the color of the text to Hex A65353 is called "color". The color property can be set on classes, ids or directly on the HTML element.

This example shows how text in the color #A65353 looks like.

```
.text, #text, p{  
    color:#A65353  
}
```

If you want to add a text shadow in that color use the text-shadow property, you can generate a text shadow directly with our [CSS Text Shadow Generator](#).

Here you see how black text with a 4 pixel #A65353 colored shadow looks like.

```
.shadow{ text-shadow: 4px 4px 2px #A65353
}
```

## Border

The CSS property to change the border of an element to Hex A65353 is called "border". The border property can be set on classes, ids or directly on the HTML element.

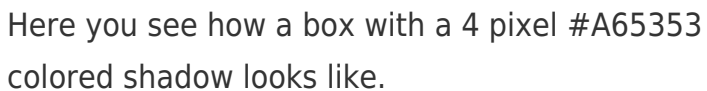
This example shows the color as border, it can be applied via the CSS property "border" or "border-color".

```
.border, #border, table{ border:4px solid
#A65353 }
```

If only the border color should be changed use the property `border-color`.

```
.border{ border-color:#A65353 }
```

If you want to add a box shadow in that color use:



Here you see how a box with a 4 pixel #A65353 colored shadow looks like.

```
.boxshadow{ -moz-box-shadow:4px 4px 4px  
4px #A65353; -webkit-box-shadow:4px 4px  
4px 4px #A65353; box-shadow:4px 4px 4px  
4px #A65353 }
```

# Background

The CSS property to change the background color of an element to Hex A65353 is called "background". The background property can be set on classes, ids or directly on the HTML element.

```
.background, #background, body{  
background:#A65353 }
```

If only the background color should be changed can be used:

```
.background{ background-color:#A65353 }
```

This example shows the color as background, it is applied via the CSS property "background".

To optimize and compress your CSS code, you can use our [online CSS compressor and optimizer](#) based on csstidy. If you want to create a linear or radial gradient as background or border, check our [CSS Gradient Generator](#).



Hey! You found this booklet interesting? Support Converting Colors with the new Membership Option!

The pro membership hides all ads, plus gives you double the colors in the color bucket, and more awesome pro features!

**[Learn more, Memberships starting at \\$2.50/m!](#)**

**Follow me  
on Twitter!**

@ConvertingColor