

Converting Colors

Hex(A66056)

Have a look what the booklet for
Hex(A66056) contains.

Hex(A66056)	3
<i>Conversions</i>	4
<i>Details</i>	6
<i>Harmonies</i>	11
<i>Previews</i>	23
<i>Color Blindness Simulation</i>	26
<i>CSS Examples</i>	29

Color

Hex(A66056)

Conversions

Conversions Part 1

Format	Color
Hex	A66056
RGB	166, 96, 86
RGB Percent	65%, 38%, 34%
CMY	0.3490, 0.6235, 0.6627
CMYK	0.00, 0.42, 0.48, 0.35
HSL	7°, 32%, 49%
HSV	7°, 48%, 65%
XYZ	21.5885, 17.1446, 10.9755
YIQ	115.7900, 44.9300, 11.7300

Conversions

Conversions Part 2

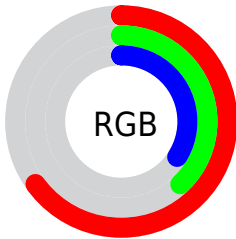
Format	Color
R_{YB}	166, 97, 86
Decimal	10903638
CIE Lab	48.44, 27.30, 18.03
CIE LCh	48, 32.717, 33.436
Yxy	17.1446, 0.4343, 0.3449
Android (android.graphics.Color)	4289093718 (0xFFA66056)
YUV	115.7900, -14.6865, 44.0342
Hunter-Lab	41.4061, 20.6065, 13.2682

Details

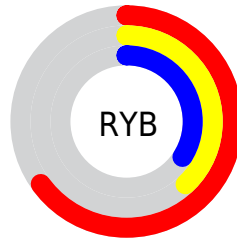
The Hex color **A66056** is a dark color, and the websafe version is hex **996666**. A complement of this color would be **569CA6**, and the grayscale version is **747474**.

A 20% lighter version of the original color is **E09488**, and **6F3029** is the 20% darker color. If you saturate the color by 10%, you get **A65145**, and if you desaturate by 10%, it is **A66F67**.

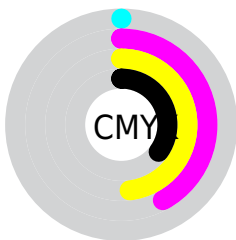
Distribution



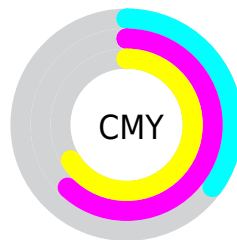
- Red (65%)
- Green (38%)
- Blue (34%)



- Red (65%)
- Yellow (38%)
- Blue (34%)



- Cyan (0%)
- Magenta (42%)
- Yellow (48%)
- Black (35%)



- Cyan (35%)
- Magenta (62%)
- Yellow (66%)

Brightness & Saturation Gradients

These gradients show how the Hex color A66056 changes by changing the brightness by 10 percent. The first figure shows a shift by +10% for each color and the second figure -10%.

Similar to the brightness gradients but the following saturation gradients show a change of the Hex color A66056 by changing the saturation by 10% instead.

 A66056

 A66056

FFFFFF

 8A483F

 E09488

 6F3029

 FDAEA2

 541914

 FFCABD

 3B0100

 FFE6D9

 220001

 FFFFF5

 000000

 A66056

 A66056

 A65145

 A66F67

 A64335

 A67D77

 A63424

 A68C88

 A62614

 A69A98

 A61703

 A6A9A9

 A61500

 A6B7BA

 A6C6CA

 A6D4DB

 A6E3EB

Harmonies

Analogous

The Analogous color harmony consists of three colors that are next to each other on the color wheel.



A75D71



A66056



986942

Triad

The Triadic color harmony groups three colors that are evenly spaced from another and form a triangle on the color wheel.



A66056



417F59



4D75AA

Complementary

The Complementary color scheme is a pair of colors which are on the opposite of each other on the color wheel.



A66056



569CA6

Split Complementary

Split-complementary colors differ from the complementary color scheme. The scheme consists of three colors, the original color and two neighbors of the complement color.



007CA4



A66056



048175

Square

The Square scheme is like the rectangle color scheme, but the four colors are evenly spaced on the color wheel.



A66056



647A44



008191



7A6BA1

Rectangle

The Rectangle color scheme consists of four colors that form a rectangle on the color wheel.



A66056



8A6F3B



008191



3A78AA

Sweetspot

The Sweet Spot groups the original color and five complimentary colors.



A66056



D9BEBA



A6569D



6E5D5B



EDEDED



6E6E6E

Same Dimension

The Same Dimension uses a secret algorithm to generate beautiful new colors.



A66056



D96B5B



A68756



544D4C



941200



140300

Inverse Universe

The Inverse Universe completely reimagines the original color for something new.



569CA6



5BC9D9



5675A6



4C5354



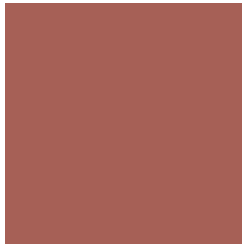
008194



001214

Previews

White Background



This preview shows how the Hex color A66056 looks on a white background.

Color Contrast Check

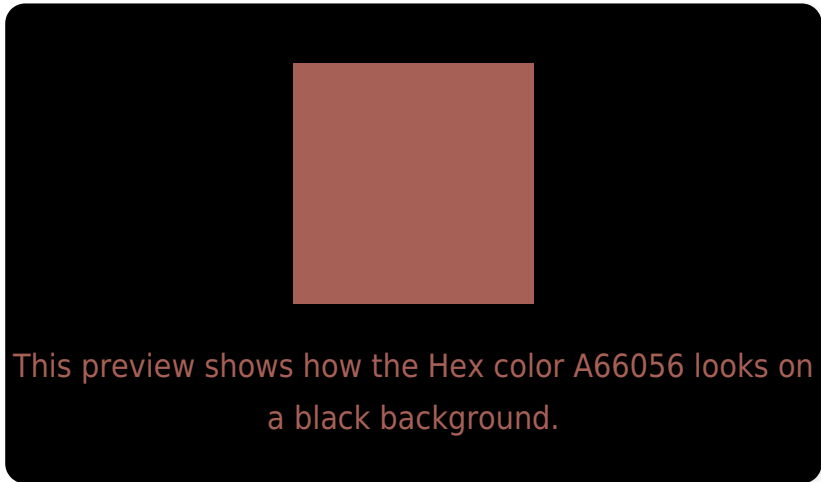
Large Text (above 18pt) WCAG AA ✓ Pass

Any Text WCAG AA ✓ Pass

Large Text (above 18pt) WCAG AAA ✓ Pass

Any Text WCAG AAA × Fail

Black Background



Color Contrast Check

Large Text (above 18pt) WCAG AA ✓ Pass

Any Text WCAG AA × Fail

Large Text (above 18pt) WCAG AAA × Fail

Any Text WCAG AAA × Fail

If you want to check with other color combinations, try the [Color Contrast Checker](#).

Hex A66056 Background



This preview shows how black text looks on a background with the Hex color A66056.



This preview shows how white text looks on a background with the Hex color A66056.

Color Blindness Simulation

Color vision deficiency is a very complex topic, and I could not describe the different causes any better than Wikipedia does, so if you want to learn more, you should check out their [article about color blindness](#).


Dichromacy



Original Color
A66056

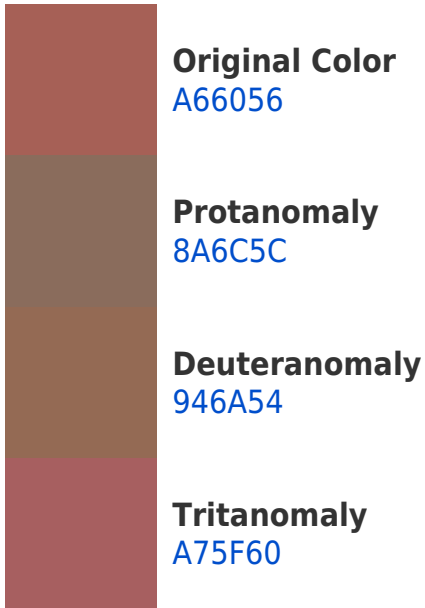
Protanopia
7A735F

Deuteranopia
896F53



Tritanopia
A75E65

Trichromacy



Monochromacy



CSS Examples

Text

The CSS property to change the color of the text to Hex A66056 is called "color". The color property can be set on classes, ids or directly on the HTML element.

This example shows how text in the color #A66056 looks like.

```
.text, #text, p{  
    color:#A66056  
}
```

If you want to add a text shadow in that color use the text-shadow property, you can generate a text shadow directly with our [CSS Text Shadow Generator](#).

Here you see how black text with a 4 pixel #A66056 colored shadow looks like.

```
.shadow{ text-shadow: 4px 4px 2px #A66056
}
```

Border

The CSS property to change the border of an element to Hex A66056 is called "border". The border property can be set on classes, ids or directly on the HTML element.

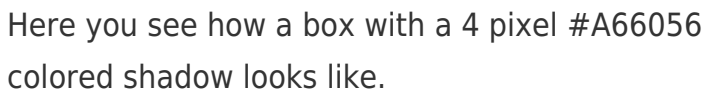
This example shows the color as border, it can be applied via the CSS property "border" or "border-color".

```
.border, #border, table{ border:4px solid
#A66056 }
```

If only the border color should be changed use the property `border-color`.

```
.border{ border-color:#A66056 }
```

If you want to add a box shadow in that color use:



Here you see how a box with a 4 pixel `#A66056` colored shadow looks like.

```
.boxshadow{ -moz-box-shadow:4px 4px 4px  
4px #A66056; -webkit-box-shadow:4px 4px  
4px 4px #A66056; box-shadow:4px 4px 4px  
4px #A66056 }
```

Background

The CSS property to change the background color of an element to Hex A66056 is called "background". The background property can be set on classes, ids or directly on the HTML element.

```
.background, #background, body{  
background:#A66056 }
```

If only the background color should be changed can be used:

```
.background{ background-color:#A66056 }
```

This example shows the color as background, it is applied via the CSS property "background".

To optimize and compress your CSS code, you can use our [online CSS compressor and optimizer](#) based on csstidy. If you want to create a linear or radial gradient as background or border, check our [CSS Gradient Generator](#).

Hey! You found this booklet interesting? Support Converting Colors with the new Membership Option!

The pro membership hides all ads, plus gives you double the colors in the color bucket, and more awesome pro features!

[Learn more, Memberships starting at \\$2.50/m!](#)

**Follow me
on Twitter!**

@ConvertingColor