

# Converting Colors

Hex(A67154)

Have a look what the booklet for  
Hex(A67154) contains.

<b>Hex(A67154)</b> .....	3
<i><b>Conversions</b></i> .....	4
<i><b>Details</b></i> .....	6
<i><b>Harmonies</b></i> .....	11
<i><b>Previews</b></i> .....	23
<i><b>Color Blindness Simulation</b></i> .....	26
<i><b>CSS Examples</b></i> .....	29

**Color**

**Hex(A67154)**

# Conversions

## Conversions Part 1

<b>Format</b>	<b>Color</b>
Hex	A67154
RGB	166, 113, 84
RGB Percent	65%, 44%, 33%
CMY	0.3490, 0.5569, 0.6706
CMYK	0.00, 0.32, 0.49, 0.35
HSL	21°, 33%, 49%
HSV	21°, 49%, 65%
XYZ	23.2312, 20.5573, 11.1310
YIQ	125.5410, 40.8970, 2.2170

# Conversions

## Conversions Part 2

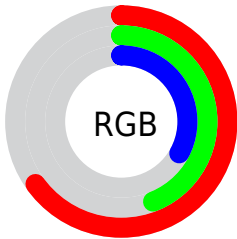
<b>Format</b>	<b>Color</b>
<b>R<sub>YB</sub></b>	166, 129, 84
Decimal	10907988
CIE <sub>Lab</sub>	52.46, 17.53, 24.52
CIE <sub>LCh</sub>	52, 30.140, 54.446
Yxy	20.5573, 0.4230, 0.3743
Android (android.graphics.Color)	4289098068 (0xFFA67154)
YUV	125.5410, -20.4797, 35.4825
Hunter-Lab	45.3402, 12.1138, 17.1824

# Details

The Hex color **A67154** is a dark color, and the websafe version is hex **996633**. A complement of this color would be **5489A6**, and the grayscale version is **7E7E7E**.

A 20% lighter version of the original color is **DFA586**, and **6F4126** is the 20% darker color. If you saturate the color by 10%, you get **A66643**, and if you desaturate by 10%, it is **A67C65**.

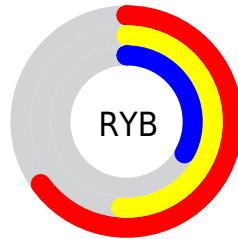
# Distribution



Red (65%)

Green (44%)

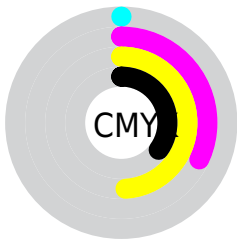
Blue (33%)



Red (65%)

Yellow (51%)

Blue (33%)

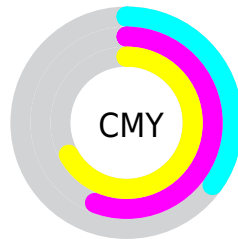


Cyan (0%)

Magenta (32%)

Yellow (49%)

Black (35%)



Cyan (35%)

Magenta (56%)

Yellow (67%)

# Brightness & Saturation Gradients

These gradients show how the Hex color A67154 changes by changing the brightness by 10 percent. The first figure shows a shift by +10% for each color and the second figure -10%.

Similar to the brightness gradients but the following saturation gradients show a change of the Hex color A67154 by changing the saturation by 10% instead.



 A67154

 A67154

FFFFFF

 8A583D

 DFA586

 6F4126

 FDC0A0

 552A11

 FFDCBB

 3C1500

 FFF9D7

 250000

 FFFFF4

 000000

 A67154

 A67154

 A66643

 A67C65

 A65C33

 A68675

 A65122

 A69186

 A64612

 A69C96

 A63B01

 A6A7A7

 A63B00

 A6B1B8

 A6BCC8

 A6C7D9

 A6D2E9

# Harmonies

## Analogous

The Analogous color harmony consists of three colors that are next to each other on the color wheel.



AF6A69



A67154



937A49

# Triad

The Triadic color harmony groups three colors that are evenly spaced from another and form a triangle on the color wheel.



A67154



388B77



7978AC

# Complementary

The Complementary color scheme is a pair of colors which are on the opposite of each other on the color wheel.



A67154



5489A6

# Split Complementary

Split-complementary colors differ from the complementary color scheme. The scheme consists of three colors, the original color and two neighbors of the complement color.



4F81B0



A67154



118B92

# Square

The Square scheme is like the rectangle color scheme, but the four colors are evenly spaced on the color wheel.



A67154



5A885E



2088A7



996F9C

# Rectangle

The Rectangle color scheme consists of four colors that form a rectangle on the color wheel.



A67154



82804A



2088A7



6C7BAF



# Sweetspot

The Sweet Spot groups the original color and five complimentary colors.



A67154



D9C4B8



A65489



6E615A



EDEDED



6E6E6E



# Same Dimension

The Same Dimension uses a secret algorithm to generate beautiful new colors.



A67154



D98659



A69A54



544F4C



943400



140700



# Inverse Universe

The Inverse Universe completely reimagines the original color for something new.



5489A6



59ACD9



5460A6



4C5154



006094

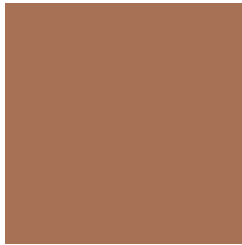


000D14



# Previews

## White Background



This preview shows how the Hex color A67154 looks on a white background.

## Color Contrast Check

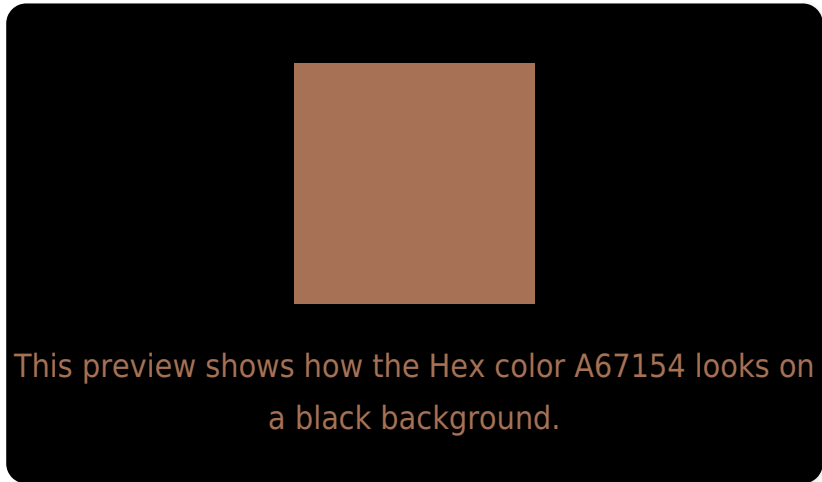
Large Text (above 18pt) WCAG AA ✓ Pass

Any Text WCAG AA × Fail

Large Text (above 18pt) WCAG AAA × Fail

Any Text WCAG AAA × Fail

# Black Background



## Color Contrast Check

Large Text (above 18pt) WCAG AA ✓ Pass

Any Text WCAG AA ✓ Pass

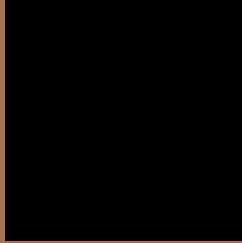
Large Text (above 18pt) WCAG AAA ✓ Pass

Any Text WCAG AAA × Fail

If you want to check with other color combinations, try the [Color Contrast Checker](#).



## Hex A67154 Background



This preview shows how black text looks on a background with the Hex color A67154.



This preview shows how white text looks on a background with the Hex color A67154.

# Color Blindness Simulation

Color vision deficiency is a very complex topic, and I could not describe the different causes any better than Wikipedia does, so if you want to learn more, you should check out their [article about color blindness](#).

## Dichromacy



**Original Color**  
A67154

**Protanopia**  
877D59

**Deuteranopia**  
977853



**Tritanopia**  
A96D75

# Trichromacy



**Original Color**  
A67154

**Protanomaly**  
927957

**Deuteranomaly**  
9C7553

**Tritanomaly**  
A86E69

# Monochromacy



**Original Color**  
A67154

**Achromatopsia**  
7E7E7E

**Achromatomaly**  
8D796F

# CSS Examples

## Text

The CSS property to change the color of the text to Hex A67154 is called "color". The color property can be set on classes, ids or directly on the HTML element.

This example shows how text in the color #A67154 looks like.

```
.text, #text, p{  
    color:#A67154  
}
```

If you want to add a text shadow in that color use the text-shadow property, you can generate a text shadow directly with our [CSS Text Shadow Generator](#).

Here you see how black text with a 4 pixel #A67154 colored shadow looks like.

```
.shadow{ text-shadow: 4px 4px 2px #A67154
}
```

## Border

The CSS property to change the border of an element to Hex A67154 is called "border". The border property can be set on classes, ids or directly on the HTML element.

This example shows the color as border, it can be applied via the CSS property "border" or "border-color".

```
.border, #border, table{ border:4px solid
#A67154 }
```

If only the border color should be changed use the property `border-color`.

```
.border{ border-color:#A67154 }
```

If you want to add a box shadow in that color use:

Here you see how a box with a 4 pixel #A67154 colored shadow looks like.

```
.boxshadow{ -moz-box-shadow:4px 4px 4px  
4px #A67154; -webkit-box-shadow:4px 4px  
4px 4px #A67154; box-shadow:4px 4px 4px  
4px #A67154 }
```

# Background

The CSS property to change the background color of an element to Hex A67154 is called "background". The background property can be set on classes, ids or directly on the HTML element.

```
.background, #background, body{  
background:#A67154 }
```

If only the background color should be changed can be used:

```
.background{ background-color:#A67154 }
```

This example shows the color as background, it is applied via the CSS property "background".

To optimize and compress your CSS code, you can use our [online CSS compressor and optimizer](#) based on csstidy. If you want to create a linear or radial gradient as background or border, check our [CSS Gradient Generator](#).



Hey! You found this booklet interesting? Support Converting Colors with the new Membership Option!

The pro membership hides all ads, plus gives you double the colors in the color bucket, and more awesome pro features!

**[Learn more, Memberships starting at \\$2.50/m!](#)**

**Follow me  
on Twitter!**

@ConvertingColor