

Converting Colors

Hex(A67244)

Have a look what the booklet for
Hex(A67244) contains.

Hex(A67244)	3
<i>Conversions</i>	4
<i>Details</i>	6
<i>Harmonies</i>	11
<i>Previews</i>	23
<i>Color Blindness Simulation</i>	26
<i>CSS Examples</i>	29

Color

Hex(A67244)

Conversions

Conversions Part 1

Format	Color
Hex	A67244
RGB	166, 114, 68
RGB Percent	65%, 45%, 27%
CMY	0.3490, 0.5529, 0.7333
CMYK	0.00, 0.31, 0.59, 0.35
HSL	28°, 42%, 46%
HSV	28°, 59%, 65%
XYZ	22.7866, 20.5590, 8.2361
YIQ	124.3040, 45.7580, -3.2820

Conversions

Conversions Part 2

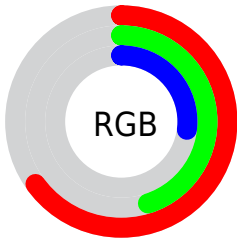
Format	Color
RYB	166, 155, 68
Decimal	10908228
CIELab	52.46, 15.51, 33.46
CIELCh	52, 36.877, 65.128
Yxy	20.5590, 0.4418, 0.3986
Android (android.graphics.Color)	4289098308 (0xFFA67244)
YUV	124.3040, -27.7579, 36.5674
Hunter-Lab	45.3420, 10.3565, 20.9697

Details

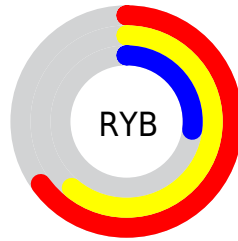
The Hex color **A67244** is a dark color, and the websafe version is hex **996633**. A complement of this color would be **4478A6**, and the grayscale version is **7D7D7D**.

A 20% lighter version of the original color is **E0A675**, and **6F4216** is the 20% darker color. If you saturate the color by 10%, you get **A66933**, and if you desaturate by 10%, it is **A67B55**.

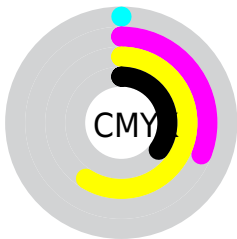
Distribution



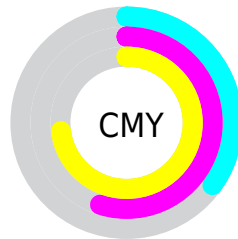
- Red (65%)
- Green (45%)
- Blue (27%)



- Red (65%)
- Yellow (61%)
- Blue (27%)



- Cyan (0%)
- Magenta (31%)
- Yellow (59%)
- Black (35%)



- Cyan (35%)
- Magenta (55%)
- Yellow (73%)

Brightness & Saturation Gradients

These gradients show how the Hex color A67244 changes by changing the brightness by 10 percent. The first figure shows a shift by +10% for each color and the second figure -10%.

Similar to the brightness gradients but the following saturation gradients show a change of the Hex color A67244 by changing the saturation by 10% instead.

 A67244

 A67244

FFFFFF

 8A592D

 E0A675

 6F4216

 FDC18F

 542B00

 FFDDAA

 3A1600

 FFFAC5

 230000

 FFFFEE

 000000

FFFFFFE

 A67244

 A67244

 A66933

 A67B55

 A66023

 A68465


 A65812

 A68C76

 A64F02

 A69586

 A64E00

 A69E97

 A6A7A8

 A6B0B8

 A6B8C9

 A6C1D9

Harmonies

Analogous

The Analogous color harmony consists of three colors that are next to each other on the color wheel.



B6685A



A67244



8B7D3C

Triad

The Triadic color harmony groups three colors that are evenly spaced from another and form a triangle on the color wheel.



A67244



008E82



8773B1

Complementary

The Complementary color scheme is a pair of colors which are on the opposite of each other on the color wheel.



A67244



4478A6

Split Complementary

Split-complementary colors differ from the complementary color scheme. The scheme consists of three colors, the original color and two neighbors of the complement color.



537FBC



A67244



008CA1

Square

The Square scheme is like the rectangle color scheme, but the four colors are evenly spaced on the color wheel.



A67244



418B61



0088B6



A96898

Rectangle

The Rectangle color scheme consists of four colors that form a rectangle on the color wheel.



A67244



768342



0088B6



7877B6

Sweetspot

The Sweet Spot groups the original color and five complimentary colors.



A67244



D9C4B2



A64478



6E6156



EDEDED



6E6E6E

Same Dimension

The Same Dimension uses a secret algorithm to generate beautiful new colors.



A67244



D9873F



A6A344



54504C



944500



140A00

Inverse Universe

The Inverse Universe completely reimagines the original color for something new.



4478A6



3F91D9



4447A6



4C5054



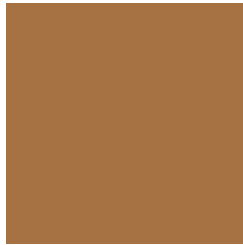
004E94



000B14

Previews

White Background



This preview shows how the Hex color A67244 looks on a white background.

Color Contrast Check

Large Text (above 18pt) WCAG AA ✓ Pass

Any Text WCAG AA × Fail

Large Text (above 18pt) WCAG AAA × Fail

Any Text WCAG AAA × Fail

Black Background



Color Contrast Check

Large Text (above 18pt) WCAG AA ✓ Pass

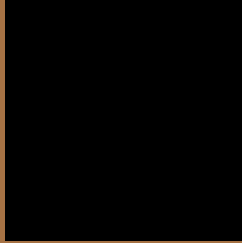
Any Text WCAG AA ✓ Pass

Large Text (above 18pt) WCAG AAA ✓ Pass

Any Text WCAG AAA × Fail

If you want to check with other color combinations, try the [Color Contrast Checker](#).

Hex A67244 Background



This preview shows how black text looks on a background with the Hex color A67244.



This preview shows how white text looks on a background with the Hex color A67244.

Color Blindness Simulation

Color vision deficiency is a very complex topic, and I could not describe the different causes any better than Wikipedia does, so if you want to learn more, you should check out their [article about color blindness](#).

Dichromacy



Original Color
A67244

Protanopia
8A7E48

Deuteranopia
9A7843

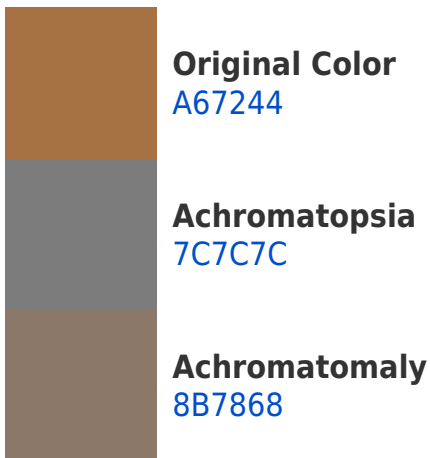


Tritanopia
AA6C74

Trichromacy



Monochromacy



CSS Examples

Text

The CSS property to change the color of the text to Hex A67244 is called "color". The color property can be set on classes, ids or directly on the HTML element.

This example shows how text in the color #A67244 looks like.

```
.text, #text, p{  
    color:#A67244  
}
```

If you want to add a text shadow in that color use the text-shadow property, you can generate a text shadow directly with our [CSS Text Shadow Generator](#).

Here you see how black text with a 4 pixel #A67244 colored shadow looks like.

```
.shadow{ text-shadow: 4px 4px 2px #A67244
}
```

Border

The CSS property to change the border of an element to Hex A67244 is called "border". The border property can be set on classes, ids or directly on the HTML element.

This example shows the color as border, it can be applied via the CSS property "border" or "border-color".

```
.border, #border, table{ border:4px solid
#A67244 }
```

If only the border color should be changed use the property `border-color`.

```
.border{ border-color:#A67244 }
```

If you want to add a box shadow in that color use:

Here you see how a box with a 4 pixel #A67244 colored shadow looks like.

```
.boxshadow{ -moz-box-shadow:4px 4px 4px  
4px #A67244; -webkit-box-shadow:4px 4px  
4px 4px #A67244; box-shadow:4px 4px 4px  
4px #A67244 }
```

Background

The CSS property to change the background color of an element to Hex A67244 is called "background". The background property can be set on classes, ids or directly on the HTML element.

```
.background, #background, body{  
background:#A67244 }
```

If only the background color should be changed can be used:

```
.background{ background-color:#A67244 }
```

This example shows the color as background, it is applied via the CSS property "background".

To optimize and compress your CSS code, you can use our [online CSS compressor and optimizer](#) based on csstidy. If you want to create a linear or radial gradient as background or border, check our [CSS Gradient Generator](#).

Hey! You found this booklet interesting? Support Converting Colors with the new Membership Option!

The pro membership hides all ads, plus gives you double the colors in the color bucket, and more awesome pro features!

[Learn more, Memberships starting at \\$2.50/m!](#)

**Follow me
on Twitter!**

@ConvertingColor