

# Converting Colors

Hex(A67D5F)

Have a look what the booklet for  
Hex(A67D5F) contains.

<b>Hex(A67D5F)</b> .....	3
<i><b>Conversions</b></i> .....	4
<i><b>Details</b></i> .....	6
<i><b>Harmonies</b></i> .....	11
<i><b>Previews</b></i> .....	23
<i><b>Color Blindness Simulation</b></i> .....	26
<i><b>CSS Examples</b></i> .....	29

# Color

Hex(A67D5F)

# Conversions

## Conversions Part 1

<b>Format</b>	<b>Color</b>
Hex	A67D5F
RGB	166, 125, 95
RGB Percent	65%, 49%, 37%
CMY	0.3490, 0.5098, 0.6275
CMYK	0.00, 0.25, 0.43, 0.35
HSL	25°, 29%, 51%
HSV	25°, 43%, 65%
XYZ	25.1251, 23.6004, 14.0576
YIQ	133.8390, 34.0660, -0.6380

# Conversions

## Conversions Part 2

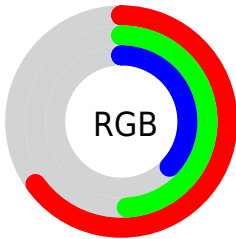
<b>Format</b>	<b>Color</b>
<b>R<sub>YB</sub></b>	166, 147, 95
Decimal	10911071
CIE <sub>Lab</sub>	55.69, 11.90, 22.51
CIE <sub>LCh</sub>	56, 25.465, 62.133
Yxy	23.6004, 0.4002, 0.3759
Android (android.graphics.Color)	4289101151 (0xFFA67D5F)
YUV	133.8390, -19.1476, 28.2052
Hunter-Lab	48.5803, 7.3022, 16.8496

# Details

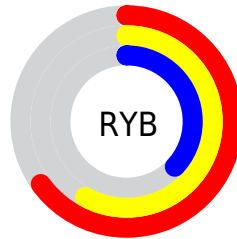
The Hex color **A67D5F** is a dark color, and the websafe version is hex **CC9966**. A complement of this color would be **5F88A6**, and the grayscale version is **868686**.

A 20% lighter version of the original color is **DFB292**, and **704C30** is the 20% darker color. If you saturate the color by 10%, you get **A6734E**, and if you desaturate by 10%, it is **A68770**.

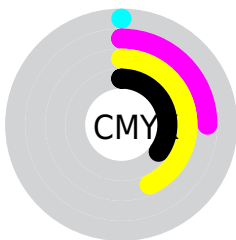
# Distribution



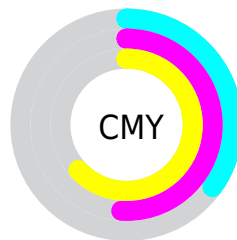
- Red (65%)
- Green (49%)
- Blue (37%)



- Red (65%)
- Yellow (58%)
- Blue (37%)



- Cyan (0%)
- Magenta (25%)
- Yellow (43%)
- Black (35%)



- Cyan (35%)
- Magenta (51%)
- Yellow (63%)

# Brightness & Saturation Gradients

These gradients show how the Hex color A67D5F changes by changing the brightness by 10 percent. The first figure shows a shift by +10% for each color and the second figure -10%.

Similar to the brightness gradients but the following saturation gradients show a change of the Hex color A67D5F by changing the saturation by 10% instead.



 A67D5F

 A67D5F

FFFFFF

 8B6447

 DFB292

 704C30

 FCCDAC

 56351B

 FFE9C8

 3E2002

 FFFFE4

 260A00

 000000

 A67D5F

 A67D5F

 A6734E

 A68770

 A66A3E

 A69080

 A6602D

 A69A91

 A6571D

 A6A3A1

 A64D0C

 A6ADB2

 A64600

 A6B7C3

 A6C0D3

 A6CAE4

 A6D3F4

# Harmonies

## Analogous

The Analogous color harmony consists of three colors that are next to each other on the color wheel.



B0776F



A67D5F



938559

# Triad

The Triadic color harmony groups three colors that are evenly spaced from another and form a triangle on the color wheel.



A67D5F



4A9286



8B7FAB

# Complementary

The Complementary color scheme is a pair of colors which are on the opposite of each other on the color wheel.



A67D5F



5F88A6

# Split Complementary

Split-complementary colors differ from the complementary color scheme. The scheme consists of three colors, the original color and two neighbors of the complement color.



6B87B1



A67D5F



3D919C

# Square

The Square scheme is like the rectangle color scheme, but the four colors are evenly spaced on the color wheel.



A67D5F



629070



4C8DAC



A3789A

# Rectangle

The Rectangle color scheme consists of four colors that form a rectangle on the color wheel.



A67D5F



84895C



4C8DAC



8082AE



# Sweetspot

The Sweet Spot groups the original color and five complimentary colors.



A67D5F



D9C8BD



A65F88



6E645C



EDEDED



6E6E6E



# Same Dimension

The Same Dimension uses a secret algorithm to generate beautiful new colors.



A67D5F



D9996A



A6A05F



544F4C



943E00



140900



# Inverse Universe

The Inverse Universe completely reimagines the original color for something new.



5F88A6



6AAAD9



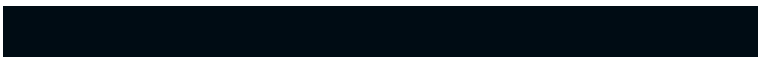
5F65A6



4C5154



005594

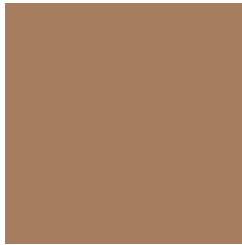


000C14



# Previews

## White Background



This preview shows how the Hex color A67D5F looks on a white background.

## Color Contrast Check

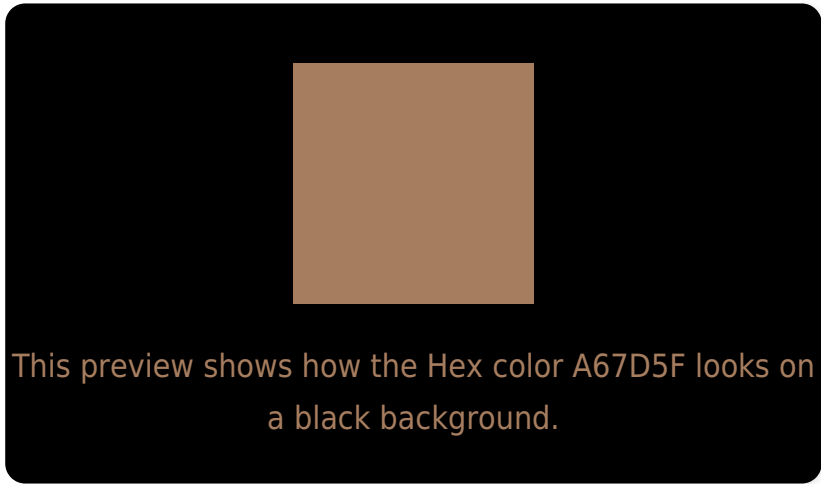
Large Text (above 18pt) WCAG AA ✓ Pass

Any Text WCAG AA ✗ Fail

Large Text (above 18pt) WCAG AAA ✗ Fail

Any Text WCAG AAA ✗ Fail

# Black Background



## Color Contrast Check

Large Text (above 18pt) WCAG AA ✓ Pass

Any Text WCAG AA ✓ Pass

Large Text (above 18pt) WCAG AAA ✓ Pass

Any Text WCAG AAA × Fail

If you want to check with other color combinations, try the [Color Contrast Checker](#).



## Hex A67D5F Background



This preview shows how black text looks on a background with the Hex color A67D5F.



This preview shows how white text looks on a background with the Hex color A67D5F.

# Color Blindness Simulation

Color vision deficiency is a very complex topic, and I could not describe the different causes any better than Wikipedia does, so if you want to learn more, you should check out their [article about color blindness](#).

## Dichromacy





**Tritanopia**  
A97882

# Trichromacy



**Original Color**  
A67D5F

**Protanomaly**  
978362

**Deuteranomaly**  
A27F5E

**Tritanomaly**  
A87A75

# Monochromacy



**Original Color**  
A67D5F

**Achromatopsia**  
868686

**Achromatomaly**  
928378

# CSS Examples

## Text

The CSS property to change the color of the text to Hex A67D5F is called "color". The color property can be set on classes, ids or directly on the HTML element.

This example shows how text in the color #A67D5F looks like.

```
.text, #text, p{  
    color:#A67D5F  
}
```

If you want to add a text shadow in that color use the text-shadow property, you can generate a text shadow directly with our [CSS Text Shadow Generator](#).

Here you see how black text with a 4 pixel #A67D5F colored shadow looks like.

```
.shadow{ text-shadow: 4px 4px 2px #A67D5F
}
```

## Border

The CSS property to change the border of an element to Hex A67D5F is called "border". The border property can be set on classes, ids or directly on the HTML element.

This example shows the color as border, it can be applied via the CSS property "border" or "border-color".

```
.border, #border, table{ border:4px solid
#A67D5F }
```

If only the border color should be changed use the property `border-color`.

```
.border{ border-color:#A67D5F }
```

If you want to add a box shadow in that color use:

Here you see how a box with a 4 pixel #A67D5F colored shadow looks like.

```
.boxshadow{ -moz-box-shadow:4px 4px 4px  
4px #A67D5F; -webkit-box-shadow:4px 4px  
4px 4px #A67D5F; box-shadow:4px 4px 4px  
4px #A67D5F }
```

# Background

The CSS property to change the background color of an element to Hex A67D5F is called "background". The background property can be set on classes, ids or directly on the HTML element.

```
.background, #background, body{  
background:#A67D5F }
```

If only the background color should be changed can be used:

```
.background{ background-color:#A67D5F }
```

This example shows the color as background, it is applied via the CSS property "background".

To optimize and compress your CSS code, you can use our [online CSS compressor and optimizer](#) based on csstidy. If you want to create a linear or radial gradient as background or border, check our [CSS Gradient Generator](#).



Hey! You found this booklet interesting? Support Converting Colors with the new Membership Option!

The pro membership hides all ads, plus gives you double the colors in the color bucket, and more awesome pro features!

**[Learn more, Memberships starting at \\$2.50/m!](#)**

**Follow me  
on Twitter!**

@ConvertingColor